



# MODERN OFFICES


SMART SOLUTIONS - TECHBRIDGE INDIA

# UNIFIED COMMUNICATION



# Voice value proposition

## New Unified Communication Infrastructure



6 Participants

Requested Control | Actual View

NEW ENTERPRISE

MODERN COLLABORATION


Complete meeting solution including PSTN Conferencing

Call management with your PBX in the cloud

PSTN Calling with no extra plans directly from Microsoft

PERSONALIZED BUSINESS

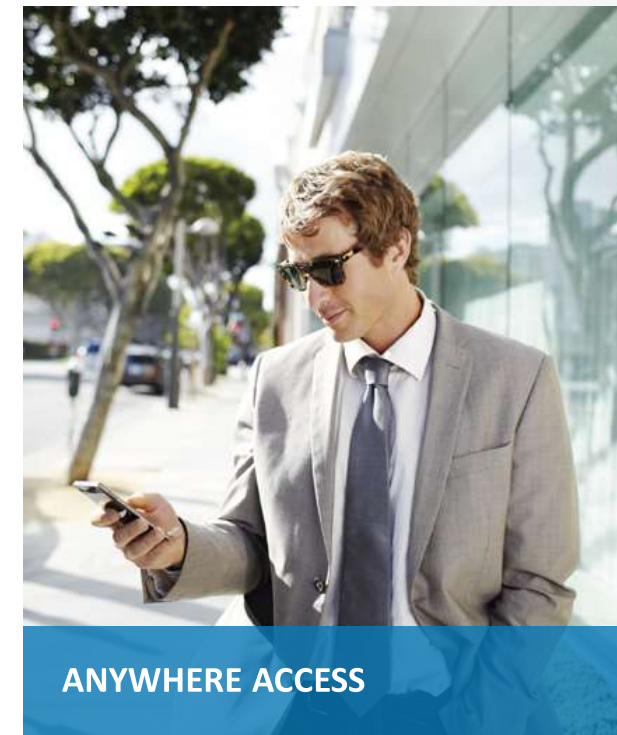
**VOICE CALLING MANAGEABILITY AND INTEGRATION**



**PSTN CALLING:**  
Dialing out to phone numbers

**CALL MANAGEMENT:**  
Hold, voice mail, call forwarding

**CALL MANAGEMENT AND PSTN CALLING**



# PBX for Communication

- Call answer / initiate (by name or number)
- Call hold / retrieve
- Call history
- Call delegation and call on-behalf
- Call transfer (blind, consult, and mobile)
- Call waiting
- Call forwarding and simultaneous ring
- Clients for PC, Mac, and mobile devices
- Device switching
- Distinctive ringing
- Do-not-disturb routing and call blocking
- Enterprise calendar call routing
- Integrated dial-pad
- Video call monitor
- Voice mail



Type your pithy comments here, for others to see when they look at your contact info

All about you

Search for someone in your org or

Find someone or dial a number

GROUPS STATUS RELATIONSHIPS NEW

FAVORITES

PETER FTE (2/10)

Eileen Long - In a meeting

Dominique Livingston - Available

Kirby Jarman - Available

Jon Smith - In a meeting

CALL FORWARDING OFF

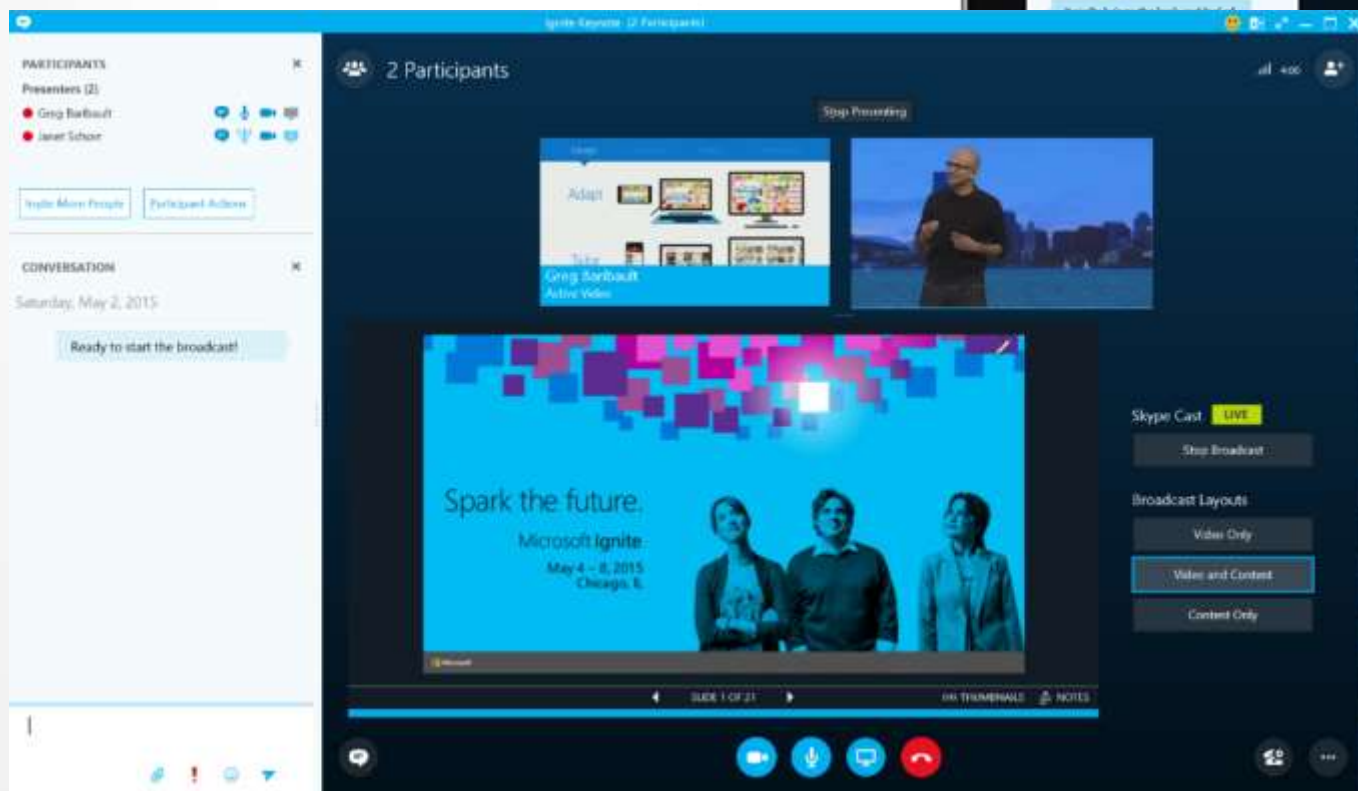
Settings

Your contacts

A screenshot of the Skype for Business desktop application interface. The window title is "Skype for Business". The top menu bar includes "File", "Meet Now", "Tools", and "Help". The main area shows a contact list with names, status (e.g., "Available", "In a meeting"), and location settings. A search bar is visible at the top of the contact list. A red line points from the text "Type your pithy comments here..." to the top of the contact card for Martha Johnston. Another red line points from "All about you" to the profile picture area. A third red line points from "Search for someone in your org or" to the search bar. A fourth red line points from "Settings" to the gear icon in the top right. A fifth red line points from "Your contacts" to the contact list. At the bottom right, there is an image of a modern office telephone with a color display screen.

# Video Conferencing

Comprehensive UC capabilities available



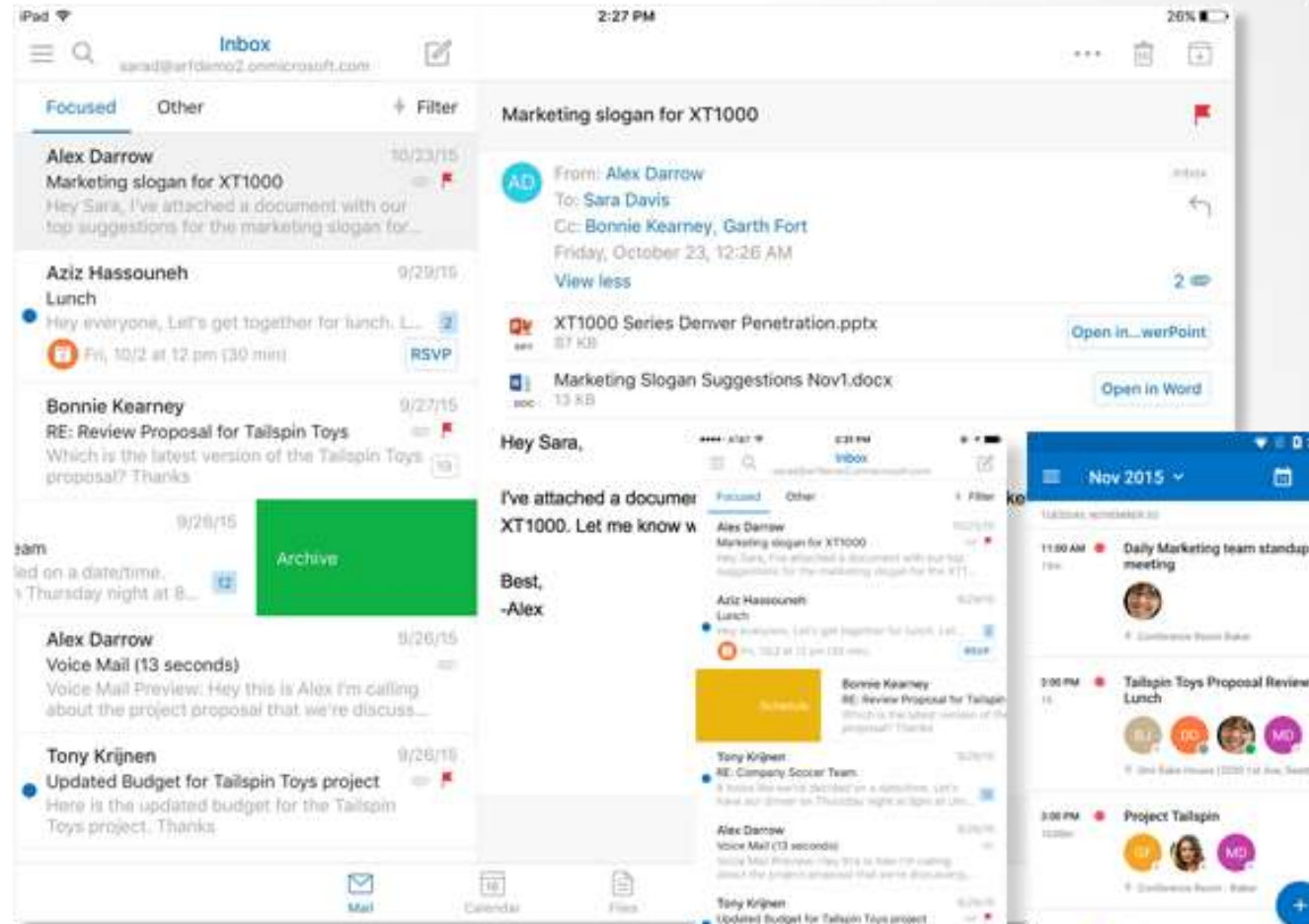
Connecting users on various video interfaces

Large-scale and structured meeting experiences



# Mails, Presence, Chat

- Check presence from IM window
- Make call from the mail user
- All-in-one calendar management
- Manage your calendar,
- share available meeting times
- schedule meetings
- get reminders



# **AUTHENTICATION CONTROL**

# Key Features

- User Control Hierarchy:
  - - Leadership
  - - Executive Management
  - - Administration Staff
  - - User/Project Staff
- Secure and Encrypted Sharing and Management



# User Authentication

Authenticated user-specific MCF Trust Center

## Office 365 Trust Center

Security. Compliance. Privacy.

As an industry leader in cloud productivity services, we are continually taking steps to maintain your trust in Office 365.

Our commitment to the area of trust is explained through the five pillars of the Trust Center.



Watch the video to learn more...

Access to All Office Features compliance controls and customer dashboard for compliance

Improved Compliance Customer controls expanding these technologies across various services (Archiving, Auditing, Data Loss Prevention, E-discovery)

### Your privacy matters

Our advertising...  
...but also give you the ability to...  
...to your data in Office 365.

[Learn more](#)

### Leadership in transparency

- You know where your data resides.
- We are transparent about who can access your data and under what circumstances.
- If you choose, we keep you updated about changes to data center locations and other audit information.

[Learn more](#)

View relevant reports – ISO, SOC Audit reports, notifications about updates, regulatory changes, etc. based on profile

# Control on your terms of usage

Solution provides built-in capabilities and customer controls

The screenshot displays a SharePoint interface with a 'Financial Audit' site. A search bar is visible at the top. Below it, there are search results for 'Sources' and 'Message Type'. A green navigation pane on the left contains options like 'Info', 'New', 'Open', 'Save', 'Share', 'Export', 'Close', 'Account', and 'Options'. The main content area shows an Excel workbook titled 'All Japan Revenues By City' with a 'Protect Workbook' dialog box open. The dialog box has a 'Protect Workbook' header and several options: 'Mark as Final', 'Encrypt with Password', 'Protect Current Sheet', 'Protect Workbook Structure', and 'Restrict Access'. The 'Restrict Access' option is highlighted in green. A dropdown menu for 'Restrict Access' is open, showing options like 'Unrestricted Access', 'Restricted Access', 'Microsoft - Confidential', and 'Microsoft - Confidential View Only'. The 'Info' tab is selected, showing details about the workbook, including its size (87.5KB), title, tags, categories, related dates, and related people (Denis Dehenne). The background shows a search results table with columns for Name, Title, and Total.

Name	Title	Total
Sally Beck		3,51
Team		14
FY2012 Annual Report VTeam		4
Geoffrey Storey		7
Matthew Motley		7
Total:		5,91

**Protect Workbook**  
Control what types of changes people can make to this workbook.

- Mark as Final**  
Let readers know the workbook is final and make it read-only.
- Encrypt with Password**  
Require a password to open this workbook.
- Protect Current Sheet**  
Control what types of changes people can make to the current sheet.
- Protect Workbook Structure**  
Prevent unwanted changes to the structure of the workbook, such as adding sheets.
- Restrict Access**  
Grant people access while removing their ability to edit, copy, or print.
- Add a Digital Signature**  
Ensure the integrity of the workbook by adding an invisible digital signature.

**Properties**

Size	87.5KB
Title	Add a title
Tags	Add a tag
Categories	Add a category

**Related Dates**

Last Modified	10/23/2012 1:18 PM
Created	10/23/2012 1:12 PM
Last Printed	

**Related People**

Author	Denis Dehenne
Last Modified By	Denis Dehenne

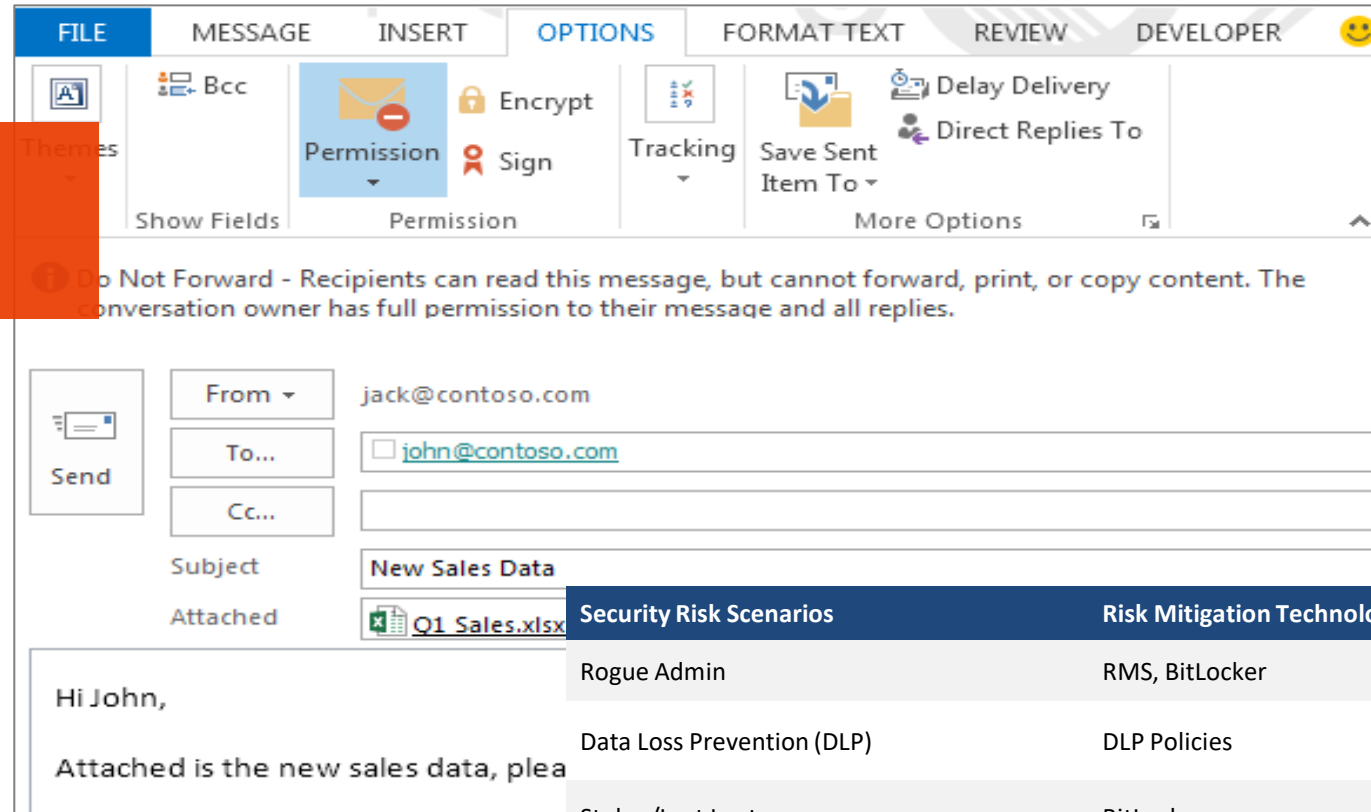
**Restrict Access**

- Unrestricted Access
- Restricted Access
- Microsoft - Confidential
- Microsoft - Confidential View Only

Advanced encryption with repository management system helps to improve security

# Encryption

Messaging Encryption;  
send secure, encrypted emails to  
anyone!



Security Risk Scenarios	Risk Mitigation Technology
Rogue Admin	RMS, BitLocker
Data Loss Prevention (DLP)	DLP Policies
Stolen/Lost Laptop	BitLocker
Stolen/Lost Mobile Device	BitLocker, Mobile Device Management
Send encrypted email outside the organization	Office 365 Message Encryption
B2B	S/MIME

Strengthening encryption to protect your data;  
data encrypted at rest and in motion

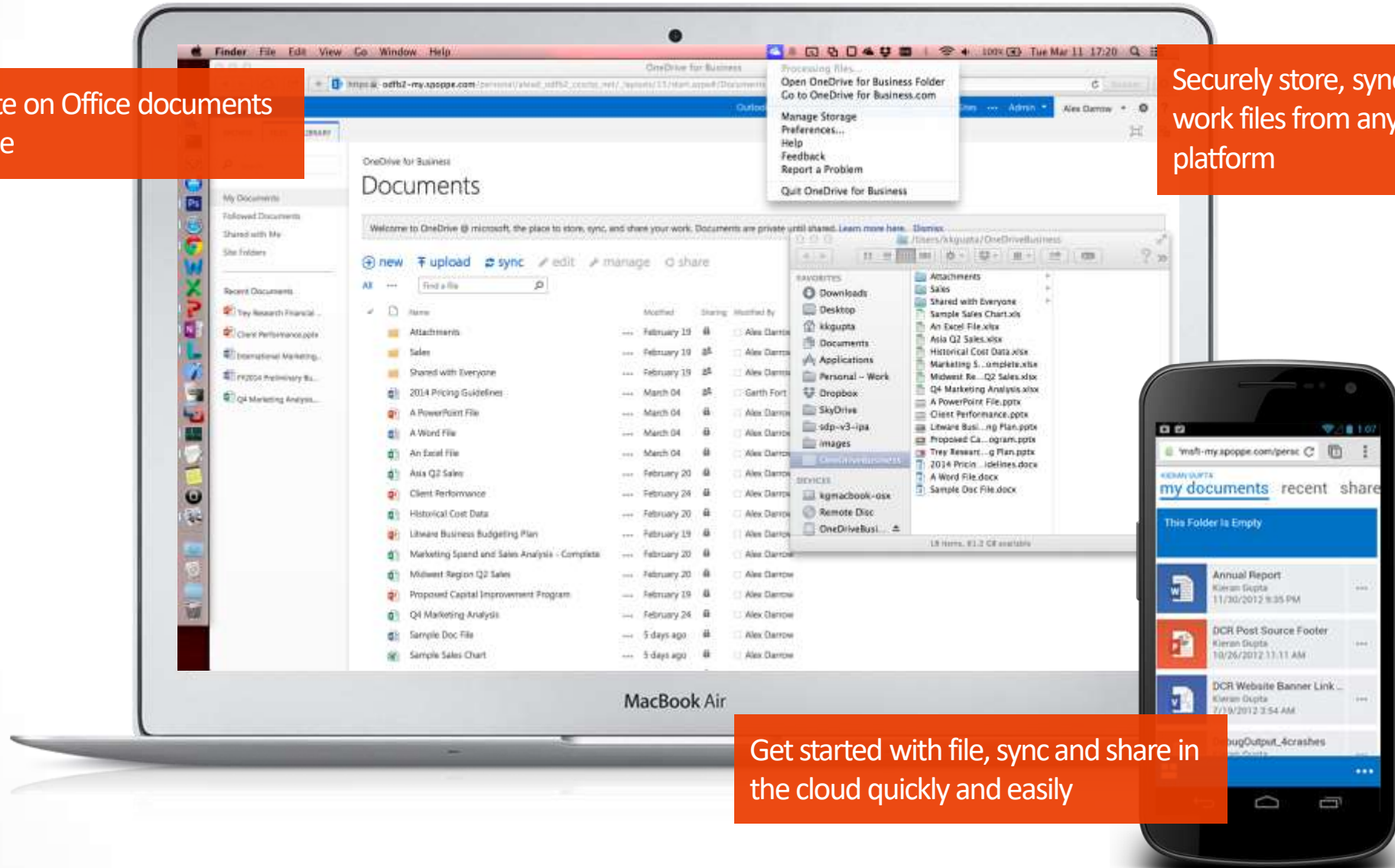
# DOCUMENT MANAGEMENT



# Documents Management for Business

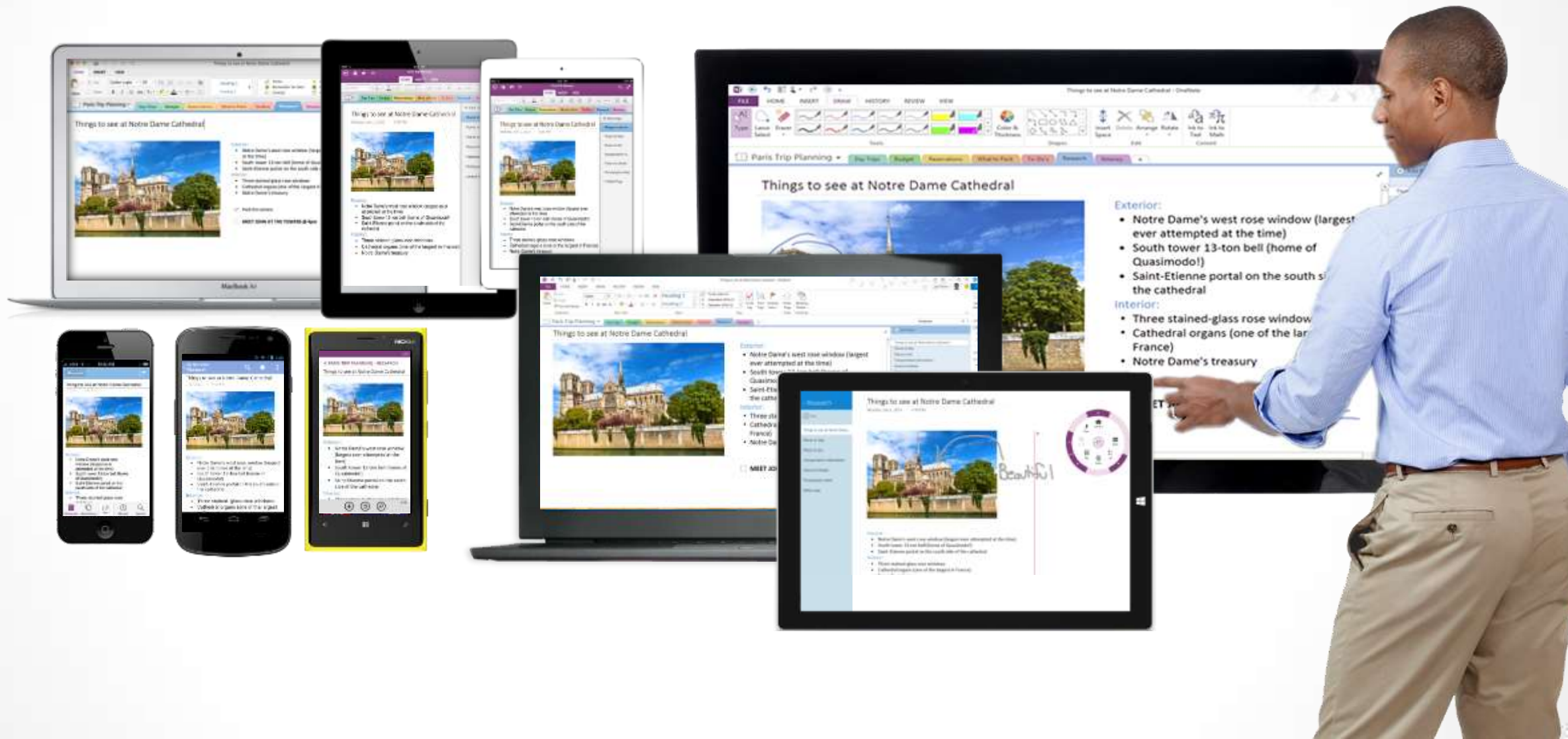
Collaborate on Office documents in real time

Securely store, sync, and share work files from any device or platform



Get started with file, sync and share in the cloud quickly and easily

# Great experiences across devices



Things to see at Notre Dame Cathedral

Exterior:

- Notre Dame's west rose window (largest ever attempted at the time)
- South tower 13-ton bell (home of Quasimodo!)
- Saint-Etienne portal on the south side of the cathedral

Interior:

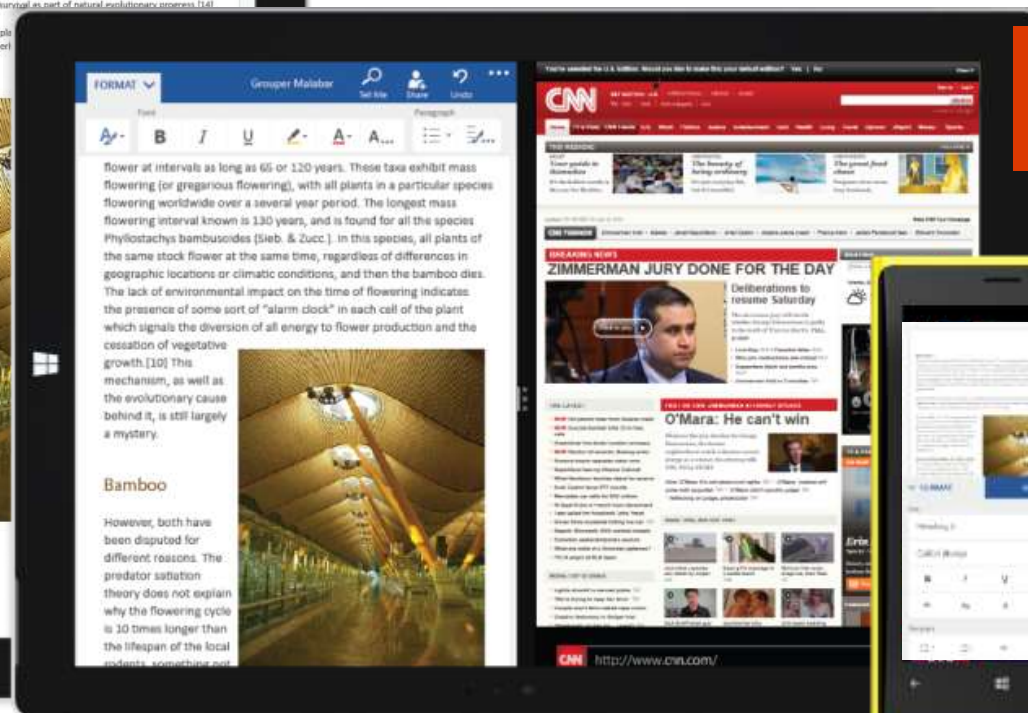
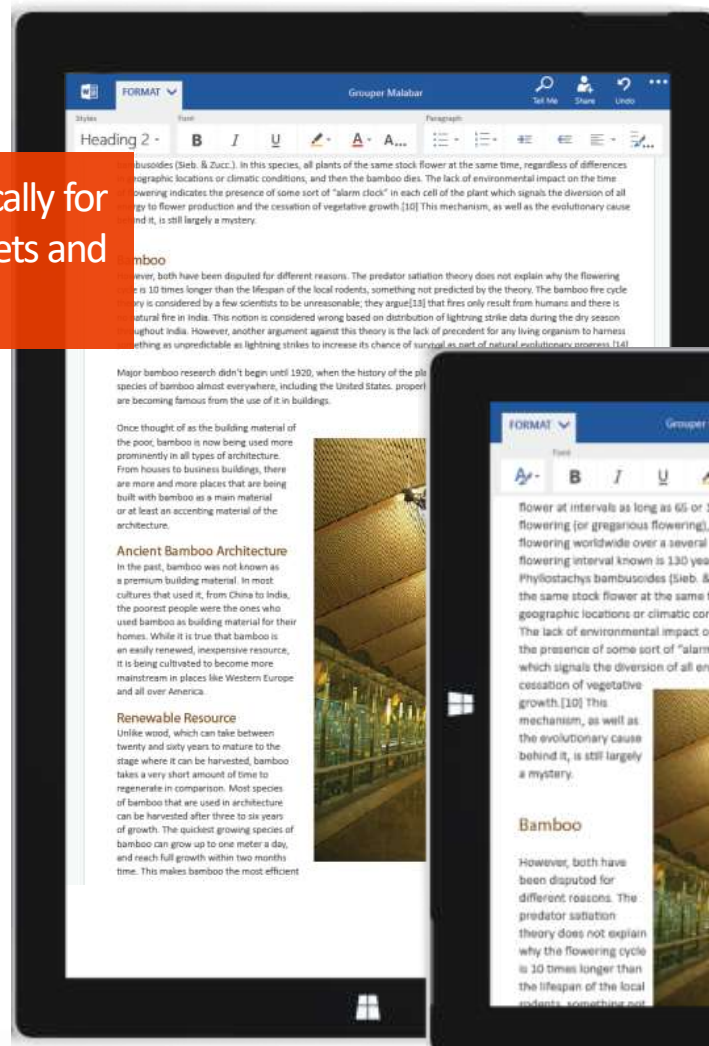
- Three stained-glass rose windows
- Cathedral organs (one of the largest in France)
- Notre Dame's treasury

Things to see at Notre Dame Cathedral

Beautiful

# Office across devices

Apps designed specifically for touch-first use on tablets and phones



On-the-go document review, creation, and collaboration



Familiar, consistent experience across phone, tablet, and desktop

Document fidelity remains priority



# BI for everyone

The screenshot displays the Microsoft Excel interface with a data table, a 'Query Editor' window, and a 'Create Connection' pane. The data table shows demographic information for various US states, including population and percentages for different racial and ethnic groups. The 'Query Editor' window shows a list of columns and a 'Query Settings' pane with 'Removed Columns' selected. The 'Create Connection' pane lists various data providers such as SAP, Hadoop (HDFS), Oracle Database, IBM DB2, MySQL, PostgreSQL, Teradata, and Sybase.

State or District	Population	Non-Hispanic White	Hispanic/Latino	Black	American Indian or Alaskan Native	Asian	Native Hawaiian or Pacific Islander
1 Alabama	4800730	67.0	3.9	26.2	0.0	2.1	
2 Alaska	740232	64.1	3.5	3.1	34.0	5.4	
3 Arizona	6994817	57.9	29.6	4.1	4.6	2.9	
4 Arkansas	2937929	74.5	6.4	15.4	0.0	1.2	
5 California	38053358	48.1	17.6	6.2	1.1	13.1	
6 Colorado	5228196	70.0	30.7	4.0	1.1	2.8	
7 Connecticut	3580708	71.2	13.6	10.1	0.3	3.9	
8 Delaware	947934	65.3	8.2	21.4	0.5	3.2	
9 Florida	21513617	33.5	9.9	30.1	0.0	1.8	
10 Georgia	10677942	57.9	22.9	1.6	0.4	2.4	
11 Idaho	1792403	55.9	8.8	30.5	0.3	3.2	
12 Illinois	12812062	22.7	8.9	2.8	0.3	38.9	
13 Indiana	6807582	84.0	13.2	0.8	2.4	1.2	
14 Iowa	31908257	83.7	13.8	1.3	0.3	4.6	
15 Kansas	3589802	81.5	6.0	9.1	0.3	1.6	
16 Kentucky	4388255	88.7	5.0	2.9	0.4	2.7	
17 Louisiana	4632118	78.2	30.5	3.9	1.0	2.4	
18 Maine	1362856	86.3	3.1	7.9	0.2	1.1	
19 Maryland	6043372	68.3	4.2	3.2	0.2	1.3	
20 Massachusetts	7021862	84.4	3.9	1.2	0.6	1.1	
21 Michigan	10012552	54.7	8.2	29.4	0.4	5.5	
22 Minnesota	6052429	76.1	9.6	8.8	0.3	5.3	
23 Missouri	6154217	76.6	4.6	14.0	0.4	2.4	

Filter, shape, and merge queries from multiple data sources

Search and connectivity to public and corporate data all within Excel



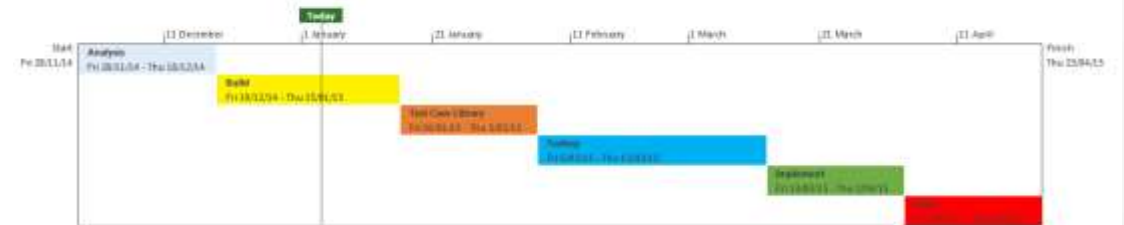
# PROJECT MANAGEMENT

# Key Features of Project Management Tool

- project management
- Access from virtually anywhere
- Give effective presentations
- Anticipate change
- Deliver projects successfully
- Work seamlessly across tools
- Discover and share information
- Communicate in real time



Project Dashboard



Project Timeline

# Benefits

- Easily plan and manage your projects
- Work efficient and be able to prioritize
- You can manage your projects from anywhere
- The Team Planner allows you to anticipate change or potential problems.
- Helps you and your team improve everyday collaboration
- Easily copy project information to Office applications such as PowerPoint or email
- Save important plans and details to Document Management System.

Projects RPT	BRMS Tech	Techno-PM	Techno-Blogger	eDashboard	eChecklist
Schedule	30% ↑	87% ↑	60% →	90% ↑	10% ↓
Budget					
Resources					
Risks & Issues					
Quality (Key Objectives)					





THANK YOU