

Legend

SWD

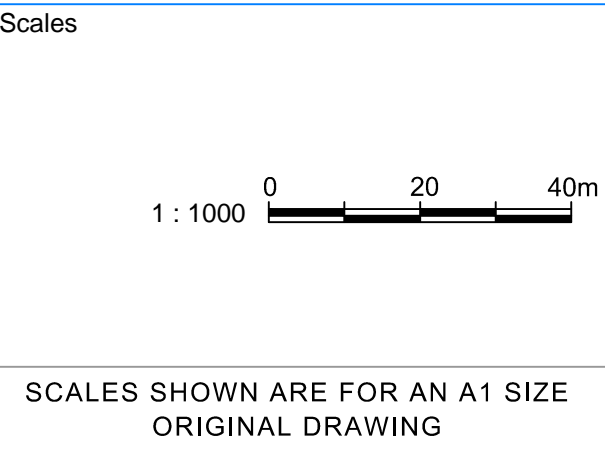
- Trunk Storm Drains
- Road Center line
- Flow Direction
- Node
- Start Node
- Outfalls

Notes

- All dimensions are in metres.
- Box drain dimensions are given as SpanxRise.
eg. 0.6x0.45 represents a box drain with span 0.6m and rise 0.45m.
- FRL: Finished Road Level
- HGL: Hydraulic Grade Line
- HFL: High Flood Level
- IL: Invert Level
- GL: Ground Level

FOR TENDER ONLY

Rev	Description	By	Verified	Date
R0	Issued For Tender	Moinuddin	G.Satish Kumar	18-July-2017



Consultants

aarvee associates
architects engineers & consultants pvt. ltd.

GIIC 贵州海上丝路国际投资有限公司
GUIZHOU MARITIME SILK ROAD INTERNATIONAL INVESTMENT CORPORATION

JV

Client

Andhra Pradesh
Amaravati Development
Corporation Ltd. (ADCL)

Drawn
Moinuddin

Checked
G.Satish Kumar

Designed
G.H.N.Sharanya

Approved
Dr.K.Sravan Kumar

Date
18-July-2017

Project

SMART INTEGRATED INFRASTRUCTURE MASTER PLAN
AND DETAILED PROJECT REPORTS FOR PHASE-I
INFRASTRUCTURE WORKS FOR/AT AMARAVATI CAPITAL CITY

Drawing Title

STORM WATER DRAINAGE NETWORK PLAN - E14 ROAD
(CH: 0.00 TO CH: 1500)

Drawing No

AG-1957-AM-DPR-E14-DR-DL-001 OF 004

Rev

R0