

# urbanlogue



Presented By:



Knowledge Partners:



Implemented by  
**giz**

## Creating COVID-Safe Streets



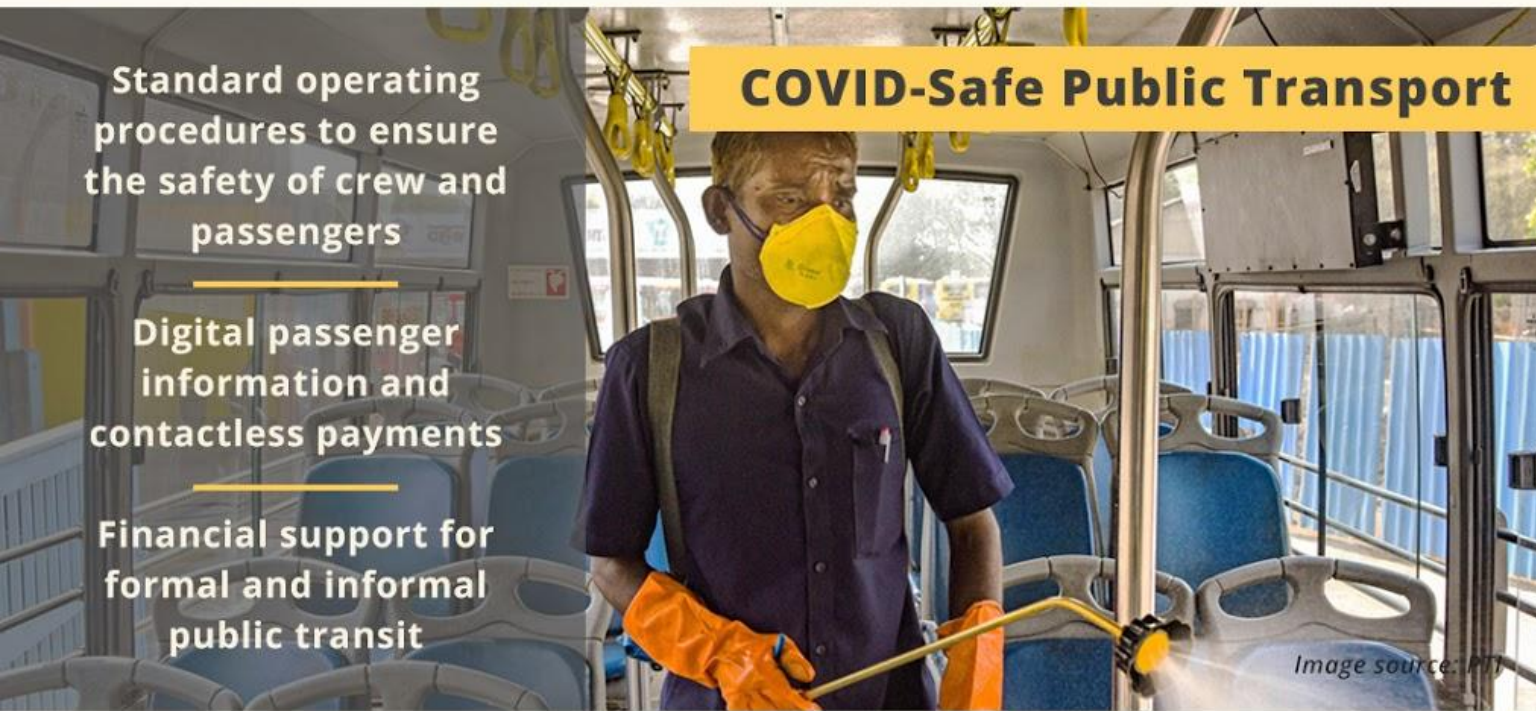
Image Source: GIZ

Instant interventions  
to reclaim space for  
walking and cycling

From temporary  
interventions to  
permanent  
infrastructure

Increase access to  
bicycles as a personal  
travel mode

## COVID-Safe Public Transport



Standard operating  
procedures to ensure  
the safety of crew and  
passengers

Digital passenger  
information and  
contactless payments

Financial support for  
formal and informal  
public transit

Image source: MIT

*Theme*  
**Creating  
COVID-safe  
transport  
solutions**



urbanlogue

# Episode 2 Instant street interventions to expand space for walking and cycling



26th May | Tuesday  
3:00 pm (IST)

Presented By:



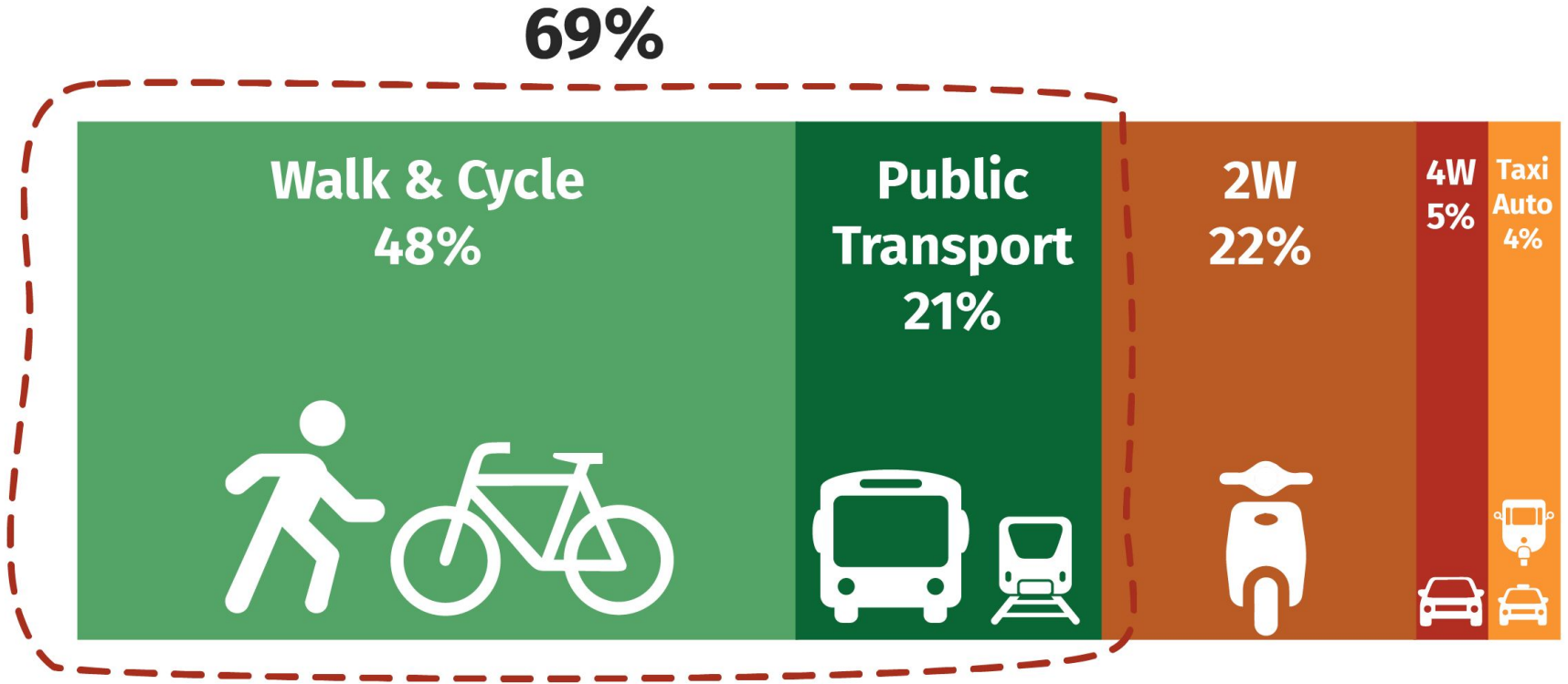
Knowledge Partners:





This can't be our  
future!

A lot of people depend on public transport for their daily commute



**Mode Share**

# Guidelines to Resume Operations

1



**Ensure the Safety  
of Staff**

2



**Disinfect Buses  
and Terminals**

3



**Communicate  
with Passengers**

4



**Ensure the Safety  
of Passengers**

# Ensure the Safety of Staff

1



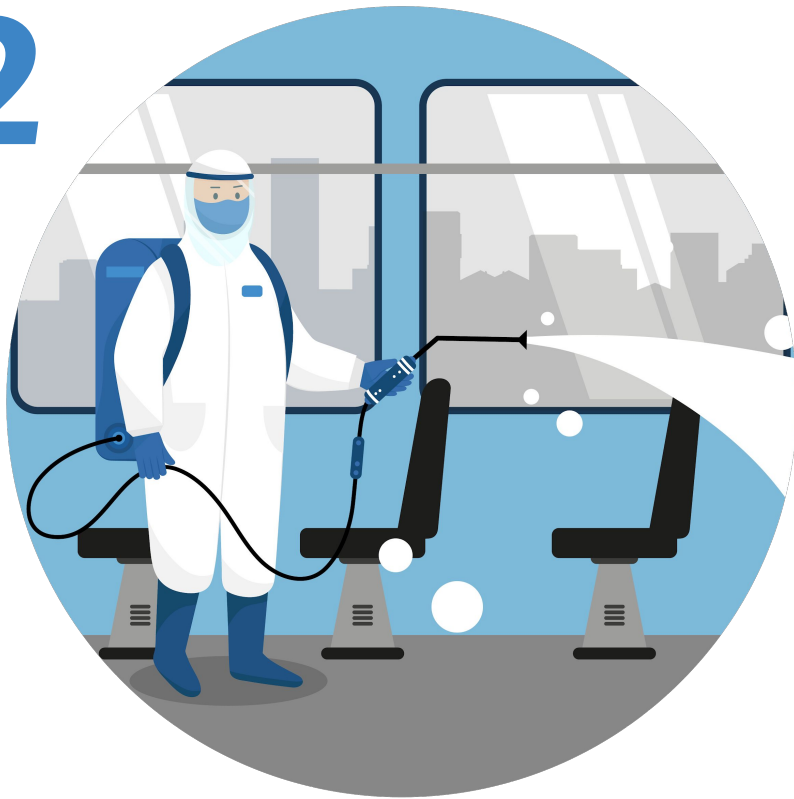
**Prepare a staff deployment schedule.  
Communicate to all staff.**

**Deploy only healthy staff.  
Sick staff must stay away from work.**

**Issue safety gear to staff.  
Train them to use it.**

**Provide healthcare and insurance  
to all staff.**

2



Clean and disinfect every bus before every trip.

Disinfect public areas of terminals every 2-3 hours.

Display on buses and at terminals a record of last disinfection procedure.

Install sanitizer dispensers at terminals for public use.



3



Inform passengers about services.  
Use media, social media, posters etc.

Advise passengers to wear masks  
and sanitize hands frequently.

At terminals, announce bus schedule  
and running status to manage crowds.

Encourage staggered office hours.  
Promote alternatives like cycling.

# Ensure the Safety of Passengers

4



Only passengers with masks allowed  
**NO MASK = NO BUS**

Do not allow buses to crowd

Deploy fare payment solutions that  
reduce contact

Separate buses for high-risk  
passengers like healthcare and  
sanitation workers

## Financial Support for Public Transport

**1**

**State and National governments should treat Public Transport as a social obligation.**

**2**

**Public transport systems can leverage technology to improve user experience.**

**3**

**Government can professionalise Informal transit services through technology and financial assistance.**

**4**

**Cities must expand their walking and cycling networks, which has reduced the strain on its public transit system.**

# Read our infographic

<https://bit.ly/ul1guide>



# Thank you

⋮ [itdp.in](http://itdp.in) ⋮ [@ITDP-INDIA](https://twitter.com/ITDP-INDIA) ⋮

**Redirect funds from proposed road widening and flyover projects for public transport improvements.**

**Hire buses from private operators to expand operations.**

## Financial Support

## Since the lockdown

Upto 50% of the fleets are being operated, strictly for the essential service workers

Income down to 1% of the pre-COVID times for some cities

Repurposed service operations for goods delivery, medical facilities



*Gurugram City Bus Service repurposed to transport essential commodities*



# Post-COVID lockdown Guidelines for Bus Operations

