

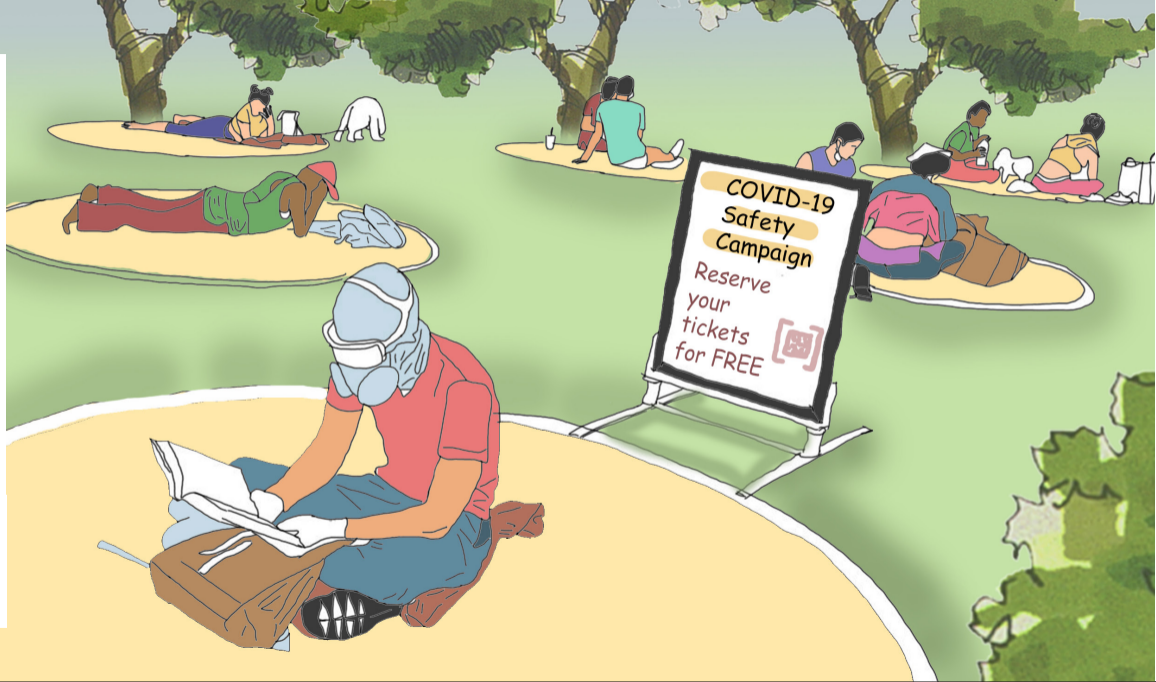
BACK TO
THE CITY

Vol. 03

Parks



Implemented by
giz Deutsche Gesellschaft
für Internationale
Zusammenarbeit (GIZ) GmbH



Fast tactical Urbanism

The spread of the virus gives us no time to intervene. It needs fast, temporary low-cost change to the built environment.

Make use of quick implementable and smart interventions to ensure physical distancing and other measures. Act fast before finding a permanent solution later.

#quickwins, #paintarchitecture, #tacticalurbanism

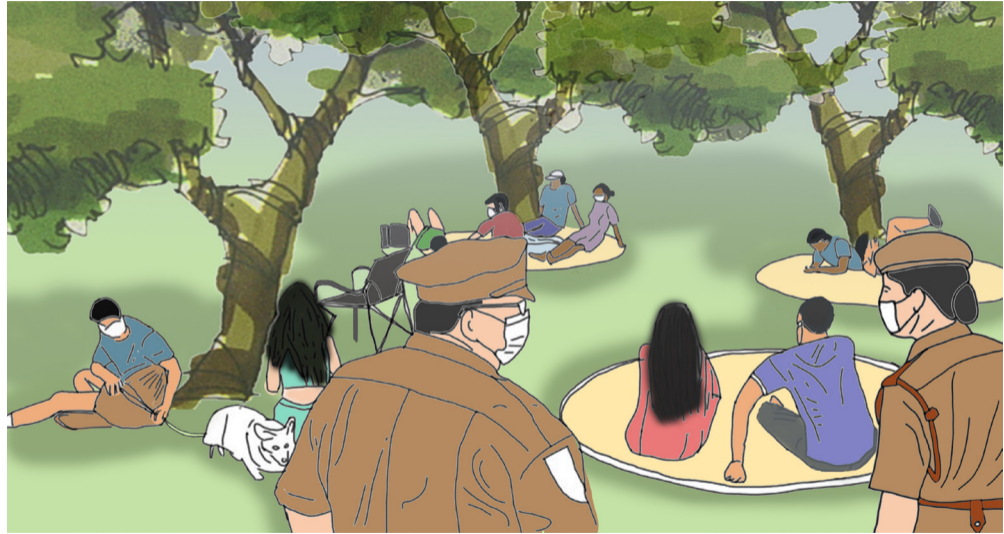


Enforcement

It needs support for the citizens to ensure that health safety measures as laid out by government are followed.

Enforce that measures are taken serious with the help of guards and local police. Maybe additionally introduce specific Covid19 awareness raising teams to support.

#Coronaenforcement, #Coronarules, #followtherules



Screening

Testing and screening is crucial. It should be as easy and as accessible as possible for the citizens to get checked and tested.

Establish health checkpoints at visitor entries to local parks. Include wellness and thermal screening. Enable the staff at those points to also supervise the usage of facemasks and sanitizer for visitors.

#safeparks, #constantscreening,
#Covidteams



Physical Distancing

Even with all the norms in place, it is impossible to be absolutely sure of citizens conduct towards safety norms. It needs a constant reminder and additional measures.

Introduce additional measures to ensure physical distancing. Use labelling systems and set certain elements inactive by blocking them.

#physicaldistancing, #constantreminder, #Covidroutine



Regulating Visitors

Places and even parks become uncontrollable and unsafe once they are overcrowded. **Introduce restrictions on the maximum number of visitors allowed inside the park. Setup an online booking system if required in very dense areas.**

#noovercrowding, #bookyourpark, #enjoyspace



SUMMARY

Enforce that measures are taken serious with the help of guards and local police.

Make use of quick implementable and smart interventions to ensure physical distancing and other measures. Act fast before finding a permanent solution later.

Establish health checkpoints at visitor entries to local parks.

Introduce additional measures to ensure physical distancing. Use labelling systems and set certain elements inactive by blocking them.

Introduce restrictions on the maximum number of visitors allowed inside the parks.

Prepared by:

Deutsche Gesellschaft für Internationale Zusammenarbeit (GIZ) GmbH

Registered offices:

Bonn and Eschborn, Germany
B-5/2, Safdarjung Enclave, New Delhi 110029
T: +91 11 49495353
I: www.giz.de/india

Responsible:

Georg Jahnsen, Project Manager
Sustainable Urban Development - Smart Cities (SUD-SC)

GIZ is responsible for the content of this publication.

On behalf of the
German Federal Ministry for Economic Cooperation and Development (BMZ)