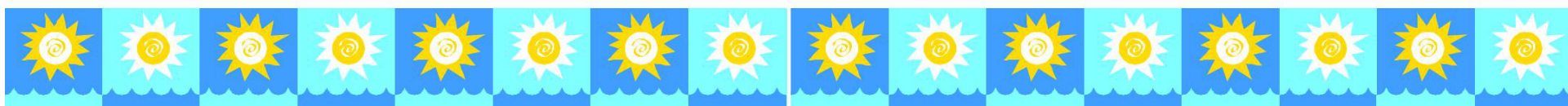


---

**PARK FOR THE DISABLED AT  
NALGONDA 'X' ROADS**

**Greater Hyderabad Municipal Corporation**



# PARK FOR THE DISABLED

---

## INTRODUCTION

A disability may be physical, cognitive, mental, sensory, emotional, and developmental or some combination of these.

Disabilities is an umbrella term, covering impairments, activity limitations and participation restrictions. An *impairment* is a problem in body function or structure; an *activity limitation* is a difficulty encountered by an individual in executing a task or action; while a *participation restriction* is a problem experienced by an individual in involvement in life situations. Thus disability is a complex phenomenon, reflecting an interaction between features of a person's body and features of the society in which he or she lives.

**- World Health Organization**

A disability may occur during a person's lifetime or maybe present from birth.

# PARK FOR THE DISABLED

Types of disability:

- **PHYSICAL DISABILITY**

- **SENSORY DISABILITY**

- Visual impairment
- Hearing impairment
- Balance disorder

- **INTELLECTUAL DISABILITY**

- **MENTAL HEALTH AND EMOTIONAL DISABILITIES**

- **DEVELOPMENT DISABILITY**



# Disability Access Sign Symbol Meanings:

1. Universal Information Symbol
2. International Symbol of Accessibility
3. Symbol indicating Audio Description for Theatre & Live Performances
4. Audio Description for TV, Films & Video
5. Large Print / Accessible Print Symbol
6. Symbol indicating Access for Individuals Who Are Blind or Have Low Vision
7. Braille Symbol
8. Telephone Typewriter Symbol
9. Sign Language Interpretation Symbol
10. Assistive Listening Systems Symbol (Ear)
11. Assistive Listening System Symbol (Telephone)
12. Closed Captioning Symbol



1



2



3



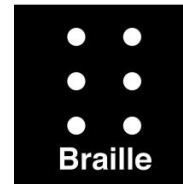
4



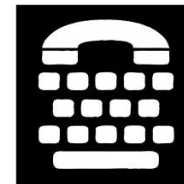
5



6



7



8



9



10



11



12

# Desktop Study: Morgan's Wonderland

## Mission Statement

To provide a safe, clean beautiful environment free of economic barriers for special needs individuals of all ages.

## Vision

The vision at Morgan's Wonderland is to establish a special place where smiles and laughter make wonderful memories with family members caregivers and friends. Where the common element of play creates an atmosphere of inclusion for those with and without disabilities so everyone can gain a greater understanding of one another.



# Desktop Study: Morgan's Wonderland

Morgan's Wonderland in San Antonio, the brainchild of the father of a daughter with special needs and billed as the world's first ultra-accessible family fun park, features rides and attractions easily enjoyed by those in wheelchairs or with cognitive disorders.

The park includes rides, interactive exhibits, playgrounds, gardens, a fishing lake and amphitheater. It has Braille signage.

"It is the only one in the world ... (demand) is beyond anything we ever expected."

Admission to the 25-acre park is free for those with cognitive or physical disabilities; family members and friends pay \$5 a person. Kids 3 and under are free. Cost for those without a disabled patron in their party is \$15.



# Desktop Study: Morgan's Wonderland

The activities and amenities include three Play scapes, Train Rides with wheelchair accessible cars, ADA accessible restrooms, an Ultra Accessible Carousel, Catch and Release Fishing, Water Canons and Remote-Controlled Boats, a Gymnasium for basketball, volleyball and tennis, and much more.

There is a Special Event Center for up to six-hundred and fifty guests, you can walk and roll around the lake, there is an, 'Around the World, themed picnic and rest area, a Water Play area, and a Race Track.

Morgan's Wonderland has a Music Garden, Swings of several types, to include wheelchair swings, a Sand Circle, Sensory Village, a Garden Sanctuary and Memorial Wall. There are several rest stops, picnic areas and pavilions. Morgan's Wonderland has two first aid stations and a feeding room as well.

The site has Braille signage, and Service Animal rest area. There is a Gift Shop and Counseling Center, as well as a VIA Transit Center



**Everyone is welcome ..  
come play with us!**



# Proposed park at Nalgonda 'X' Roads

## TARGET GROUP

The target group is composed of five major categories:

- (a) Wheelchair users
- (b) People with limited walking abilities
- (c) The sightless
- (d) The partially sighted
- (e) The hearing impaired



Other categories that may benefit to some extent from the proposed measures include the mentally disabled, people susceptible to physical fits, people with extreme physical proportions, and people with functional disabilities of the arm or hand.

# Proposed park at Nalgonda 'X' Roads

Area of the proposed site is  
1.03 acres(4205 sqm)

Three options are proposed as per  
the requirements.

Option 1:

Develop only the park(recreation purpose)  
for the disabled in general

Option 2:

Develop the park in isolated zones each  
according to the type of disability

Option 3:

Develop the park in recreation and  
therapy zones for all disabilities  
together.



# Proposed park at Nalgonda 'X' Roads

Area of the proposed site is 1.03 acres (4205

sqm) The park could be divided into two zones:

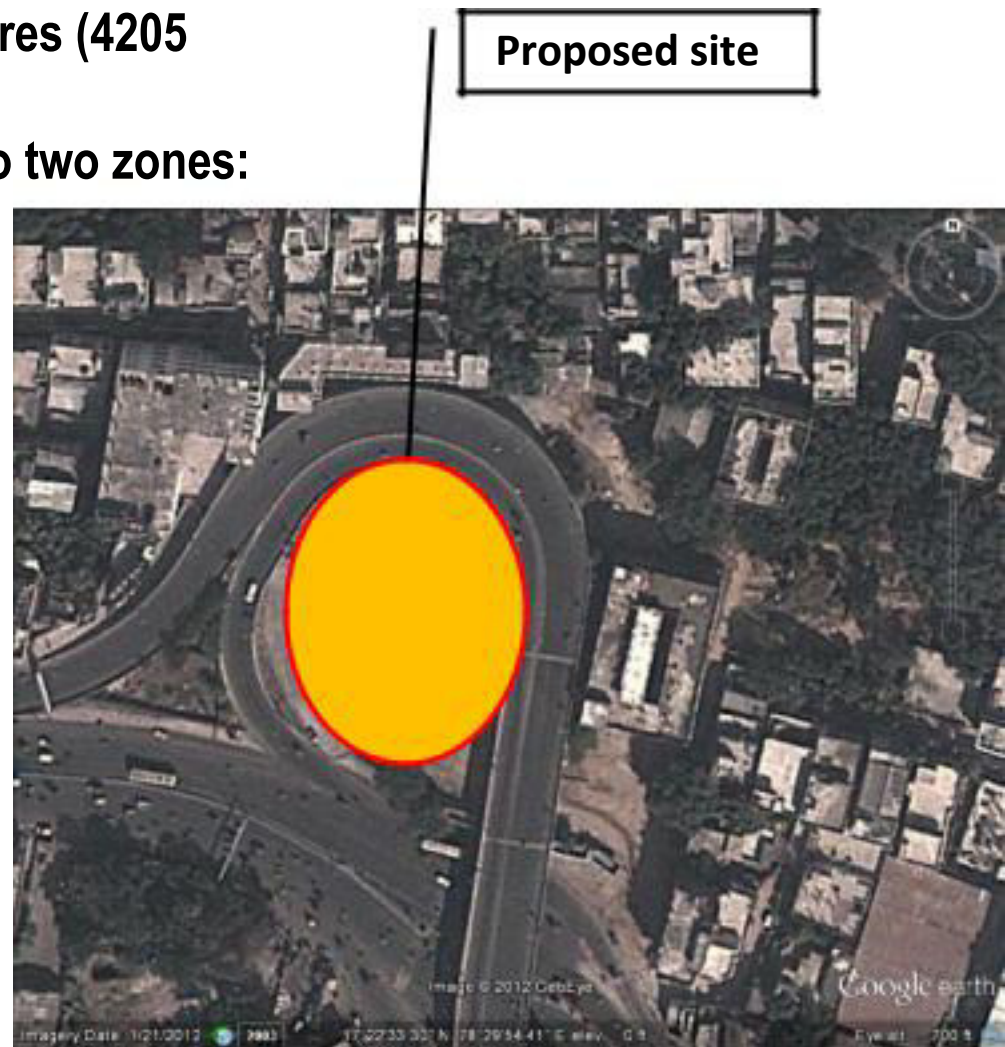
1. Recreation Zone
2. Therapy Zone

Recreation zone could include:

- Rides
- Gardens
- Playfields/Gymnasiums

Therapy zone could include:

- Physiotherapy
- Art and Music therapies
- Hydrotherapy and others



# Proposed park at Nalgonda 'X' Roads

Other facilities include;

- Restrooms with Universal design
- Special events center
- Amphitheater
- First aid stations
- Nursery
- Television stations offering sensory stimulation through lights, colours, sounds and textures.
- Counseling Center



# Design Considerations

---

## **Obstructions:**

The design will be a barrier-free path for the safety and independence of disabled people, especially the sightless.

## **Signage:**

To facilitate orientation mainly for the disabled

## **Street Furniture:**

To design accessible amenities convenient to all people, without obstructing the free passage of pedestrians along travel routes.

## **Pathways:**

To provide accessible parking facilities as close as possible to the point of destination

## **Curb Ramps:**

To overcome changes in level between the pavement and the road surface and also on the pavement itself

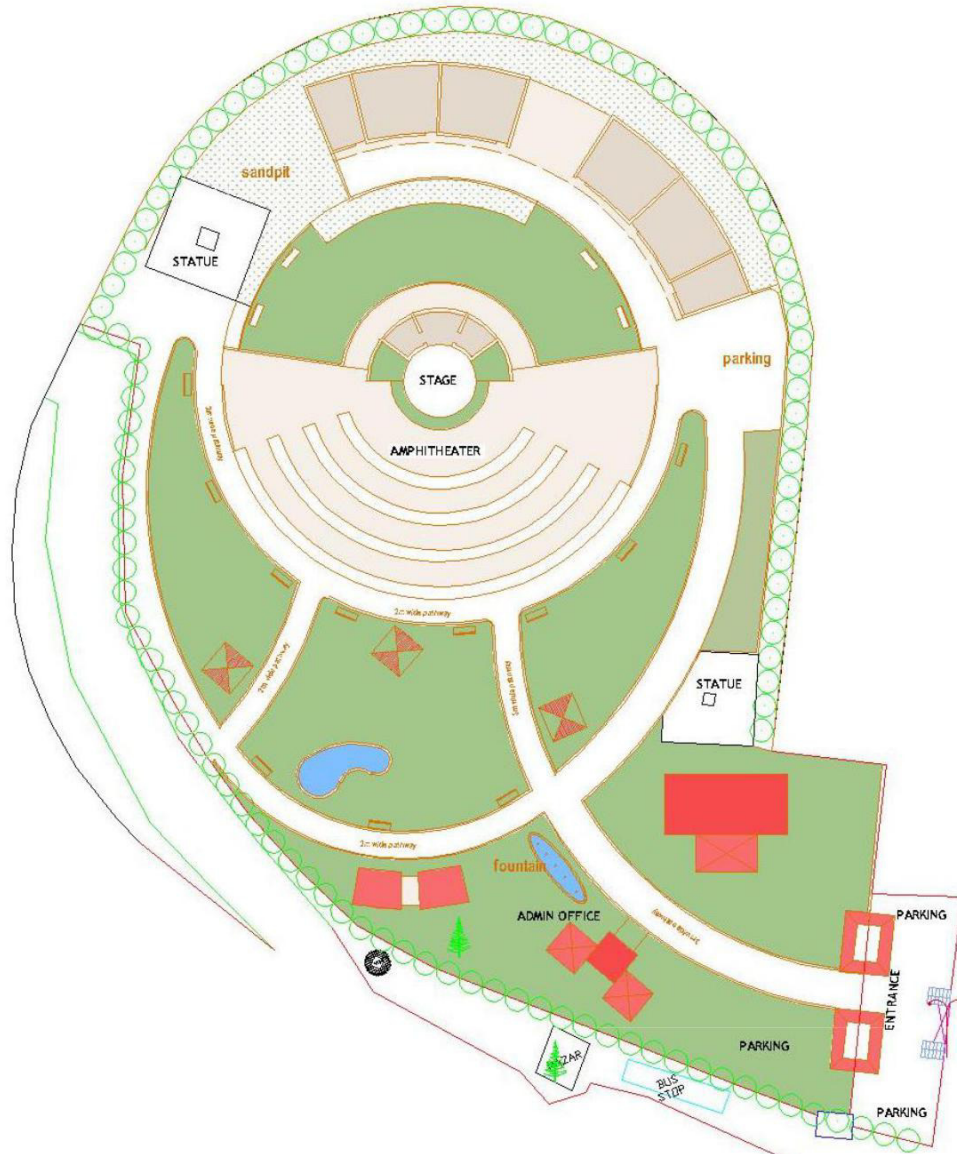
## **Pedestrian Crossing**

To facilitate the safe and independent crossing of disabled people.

## **Parking**

To provide accessible parking facilities as close as possible to the point of destination

# Proposed park at Nalgonda 'X' Roads



## SALIENT FEATURES

- Amphitheatre
- Therapy block
- 2m wide wheelchair/pedestrian pathways
- Water body
- Sensory Theater(Event Center)
- Nursery
- Public toilets
- Grand Entrance
- Lawns and Fountains
- Counseling Center