

# CREMATORIA MATERIAL SPECIFICATIONS

---

# SPECIFICATIONS

## ENTRANCE AREA : -SFT

### STRUCTURE

S.NO	DESCRIPTION	UNITS	AREA	RATE	TOTAL AMOUNT	REMARKS
1	FUNERAL PYRE					
1.1	EARTHWORK AND EXCAVATION Excavation in foundations in all types of soils except in hard rock as defined by IS-1200 in both wet and dry conditions including shoring, strutting, dewatering, sub-soil rain water levelling and dressing the bottom of excavation to correct level and slope as specified in drawings or as per recorded specification on site.					
1.2	FOUNDATION AND PLINTH Reinforced cement concrete frame structure with 1:1.5:3 ratio and necessary reinforcement for footings, columns and plinth beams as per the structural drawings					
1.3	SUPERSTRUCTURE Brick Masonry in Cement mortar (1:6) for 230mm(external) and 115mm(Internal) thick walls using locally available light weight bricks or hollow cement blocks with cost and conveyance of all materials, labour charges such as scaffolding, mixing mortar, constructing masonry, lift charges, curing etc., complete for finished item of work in SUPER STRUCTURE at all heights and depths as per the architectural drawing or a recorded specification on site.					
1.4	PLASTERING Providing cement Plastering 20mm thick in 2 coats with a base coat of 16mm thick in CM 1:5 prop and top coat of 4mm thick in CM 1:3 prop. with trowel / sponge finish including cost and conveyance of all materials, labour charges, scaffolding charges lift charges, curing etc., complete for finished item of work for external walls as directed at all heights with proper curing to avoid settlement cracks in the structure.					

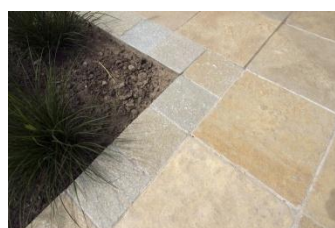
### FINISHING

1.5	FINISHING					
1.5.a	WALLS All external surfaces to be finished in 6mm thk. gravel uniform in size mixed with cement to get a texture and then painted with a coat of primer and two coats of ICI WEATHERSHIELD paint for external walls of approved shade including curing for 2 days, scaffolding, strutting, all materials and labour complete at all heights.					
1.6	FLOORING Providing and laying TANDOOR stone size 600mm x 600mm flooring / skirting using approved best quality laying on 20mm thick cement mortar 1:4 ( 1 cement: 4 coarse sand) including polish of skirting and flooring.					
1.7	ELECTRICAL Laying and fixing of pipes,cables in FINOLEX,Electrical boards using Galvanised boxes with ANCHOR ROMA make modular switches. Internal conduit wall pipes 1.2mm thk. In SUDHAKAR make as per electrical drawing or recorded instruction on site.					
1.9	FIRE BRICKS Standard sized Fire bricks around the cast iron cremation pyre to protect the surrounding flooring from the heat generated during cremation. Quality of the bricks to be checked thoroughly before usage.					

**1.5.a : Walls**



**1.6 : Flooring**



**1.9 : Fire bricks**



# SPECIFICATIONS

# FUNERAL PYRE AND WAITING AREA

## STRUCTURE

S.NO	DESCRIPTION	UNITS	AREA	RATE	TOTAL AMOUNT	REMARKS
1	FUNERAL PYRE	-	-			
1.1	EARTHWORK AND EXCAVATION Excavation in foundations in all types of soils except in hard rock as defined by IS-1200 in both wet and dry conditions including shoring, strutting, dewatering, sub-soil rain water levelling and dressing the bottom of excavation to correct level and slope as specified in drawings or as per recorded specification on site.					
1.2	FOUNDATION AND PLINTH Reinforced cement concrete frame structure with 1:1.5:3 ratio and necessary reinforcement for footings, columns and plinth beams as per the structural drawings					
1.3	SUPERSTRUCTURE Brick Masonry in Cement mortar (1:6) for 230mm(external) and 115mm(Internal) thick walls using locally available light weight bricks or hollow cement blocks with cost and conveyance of all materials, labour charges such as scaffolding, mixing mortar, constructing masonry, lift charges, curing etc., complete for finished item of work in SUPER STRUCTURE at all heights and depths as per the architectural drawing or a recorded specification on site.					
1.4	PLASTERING Providing cement Plastering 20mm thick in 2 coats with a base coat of 16mm thick in CM 1:5 prop and top coat of 4mm thick in CM 1:3 prop. with trowel / sponge finish including cost and conveyance of all materials, labour charges, scaffolding charges lift charges, curing etc., complete for finished item of work for external walls as directed at all heights with proper curing to avoid settlement cracks in the structure.					

## FINISHING

1.5	FINISHING					
1.5.a	WALLS All external surfaces to be finished in 6mm thk. gravel uniform in size mixed with cement to get a texture and then painted with a coat of primer and two coats of ICI WEATHERSHIELD paint for external walls of approved shade including curing for 2 days, scaffolding, strutting, all materials and labour complete at all heights.					
1.5.b	CEILINGS All slab surfaces to be finished with a coat of primer and two coats of ICI WEATHERSHIELD paint of approved shade including curing for 2 days, scaffolding, strutting, all materials and labour complete at all heights.					
1.6	FLOORING Providing and laying TANDOOR stone size 600mm x 600mm flooring / skirting using approved best quality laying on 20mm thick cement mortar 1:4 ( 1 cement: 4 coarse sand) including polish of skirting and flooring.					
1.7	ELECTRICAL Laying and fixing of pipes,cables in FINOLEX,Electrical boards using Galvanised boxes with ANCHOR ROMA make modular switches. Internal conduit wall pipes 1.2mm thk. In SUDHAKAR make as per electrical drawing or recorded instruction on site.					
1.8	CAST IRON CREMATION PYRE Cremation pyre in cast iron to be fixed at least 1feet into the ground and painted in black zinc oxide.	4				
1.9	FIRE BRICKS Standard sized Fire bricks around the cast iron cremation pyre to protect the surrounding flooring from the heat generated during cremation. Quality of the bricks to be checked thoroughly before usage.	4				

**1.5.a : Walls**



**1.5.b: Ceilings**



**1.6 : Flooring**



**1.8: Cremation pyre**



**1.9 : Fire bricks**



# SPECIFICATIONS

# FUNERAL PYRE AND WAITING AREA

## STRUCTURE

S.NO	DESCRIPTION	UNITS	AREARATETOTAL AMOUNTREMARKS
2	WAITING HALL	-	-
2.1	<p><b>EARTHWORK AND EXCAVATION</b></p> <p>Excavation in foundations in all types of soils except in hard rock as defined by IS-1200 in both wet and dry conditions including shoring, strutting, dewatering, sub-soil rain water levelling and dressing the bottom of excavation to correct level and slope as specified in drawings or as per recorded specification on site.</p>		
2.2	<p><b>FOUNDATION AND PLINTH</b></p> <p>Reinforced cement concrete frame structure with 1:1.5:3 ratio and necessary reinforcement for footings, columns and plinth beams as per the structural drawings</p>		
2.3	<p><b>SUPERSTRUCTURE</b></p> <p>Brick Masonry in Cement mortar (1:6) for 230mm(external) and 115mm(Internal) thick walls using locally available light weight bricks or hollow cement blocks with cost and conveyance of all materials, labour charges such as scaffolding, mixing mortar, constructing masonry, lift charges, curing etc., complete for finished item of work in SUPER STRUCTURE at all heights and depths as per the architectural drawing or a recorded specification on site.</p>		
2.4	<p><b>PLASTERING</b></p> <p>Providing cement Plastering 20mm thick in 2 coats with a base coat of 16mm thick in CM 1:5 prop and top coat of 4mm thick in CM 1:3 prop. with trowel / sponge finish including cost and conveyance of all materials, labour charges, scaffolding charges lift charges, curing etc., complete for finished item of work for external walls as directed at all heights with proper curing to avoid settlement cracks in the structure.</p>		

## FINISHING

2.5.a	<p><b>WALLS - EXTERNAL</b></p> <p>All external surfaces to be finished in 6mm thick gravel uniform in size mixed with cement to get a texture and then painted with a coat of primer and two coats of ICI WEATHERSHIELD paint for external walls of approved shade including curing for 2 days, scaffolding, strutting, all materials and labour complete at all heights.</p>		
2.5.b	<p><b>WALLS - INTERNAL</b></p> <p>All internal surfaces to be finished with a coat of primer as specified as a priming coat and further two coats with luppam and two coats of ICI paints Plastic tractor emulsion for internal walls of approved shade, scaffolding, strutting, all materials and labour complete at all heights.</p>		
2.5.c	<p><b>CEILING</b></p> <p>All slab surfaces to be finished with a coat of primer and two coats of ICI WEATHERSHIELD paint of approved shade including curing for 2 days, scaffolding, strutting, all materials and labour complete at all heights.</p>		
2.6	<p><b>FLOORING</b></p> <p>Providing and laying TANDOOR stone size 600mm x 600mm flooring / skirting using approved best quality laying on 20mm thick cement mortar 1:4 ( 1 cement: 4 coarse sand) including polish of skirting and flooring.</p>		
2.7	<p><b>ELECTRICAL</b></p> <p>Laying and fixing of pipes,cables in FINOLEX,Electrical boards using Galvanised boxes with ANCHOR ROMA make modular switches. Internal conduit wall pipes 1.2mm thk. In SUDHAKAR make as per electrical drawing or recorded instruction on site.</p>		
2.8	<p><b>FURNITURE</b></p>		
2.8.a	<p><b>SEATING BENCHES</b></p> <p>Pre cast benches supported from the walls to be well finished and cured as per design</p>	1	

**2.5.a : Walls External**



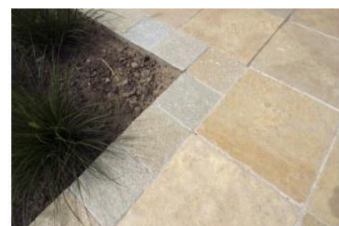
**2.5.b : Walls internal**



**2.5.c :Ceiling**



**2.6 : Flooring**



**2.8.a : Seating benches**



# SPECIFICATIONS

## STRUCTURE

S.NO	DESCRIPTION	UNITS	AREA	RATE	TOTAL AMOUNT	REMARKS
3	OFFICE					
3.1	<p><b>EARTHWORK AND EXCAVATION</b></p> <p>Excavation in foundations in all types of soils except in hardrock as defined by IS-1200 in both wet and dry conditions including shoring, strutting, dewatering, sub-soil rain water levelling and dressing the bottom of excavation to correct level and slope as specified in drawings or as per recorded specification on site.</p>					
3.2	<p><b>FOUNDATION AND PLINTH</b></p> <p>Reinforced cement concrete frame structure with 1:1.5:3 ratio and necessary reinforcement for footings, columns and plinth beams as per the structural drawings</p>					
3.3	<p><b>SUPERSTRUCTURE</b></p> <p>Brick Masonry in Cement mortar (1:6) for 230mm(external) and 115mm(Internal) thick walls using locally available light weight bricks or hollow cement blocks with cost and conveyance of all materials, labour charges such as scaffolding, mixing mortar, constructing masonry, lift charges, curing etc., complete for finished item of work in SUPER STRUCTURE at all heights and depths as per the architectural drawing or a recorded specification on site.</p>					
3.4	<p><b>PLASTERING</b></p> <p>Providing cement Plastering 20mm thick in 2 coats with a base coat of 16mm thick in CM 1:5 prop and top coat of 4mm thick in CM 1:3 prop. with trowel / sponge finish including cost and conveyance of all materials, labour charges, scaffolding charges lift charges, curing etc., complete for finished item of work for external walls as directed at all heights with proper curing to avoid settlement cracks in the structure.</p>					

## FINISHING

3.5.a	<p><b>WALLS - EXTERNAL</b></p> <p>All external surfaces to be finished in 6mm thick gravel uniform in size mixed with cement to get a texture and then painted with a coat of primer and two coats of ICI WEATHERSHIELD paint for external walls of approved shade including curing for 2 days, scaffolding, strutting, all materials and labour complete at all heights.</p>
3.5.b	<p><b>WALLS - INTERNAL</b></p> <p>All internal surfaces to be finished with a coat of primer as specified as a priming coat and further two coats with luppam and two coats of ICI paints Plastic tractor emulsion for internal walls of approved shade, scaffolding, strutting, all materials and labour complete at all heights.</p>
3.5.c	<p><b>CEILING</b></p> <p>All slab surfaces to be finished with a coat of primer and two coats of ICI WEATHERSHIELD paint of approved shade including curing for 2 days, scaffolding, strutting, all materials and labour complete at all heights.</p>
3.6	<p><b>ELECTRICAL</b></p> <p>Laying and fixing of pipes, cables in FINOLEX, Electrical boards using Galvanised boxes with ANCHOR ROMA make modular switches. Internal conduit wall pipes 1.2mm thk. In SUDHAKAR make as per electrical drawing or recorded instruction on site.</p>

### 3.5.a : WALLS EXTERNAL



### 3.5.b : WALLS INTERNAL



### 3.5.c : CEILING



## FURNITURE

S.NO	DESCRIPTION	UNITS	AREA	RATE	TOTAL AMOUNT	REMARKS
3.7.a	LOCKER UNITS					
	Standard storage units made out of M.S (powder coated) or S.S finished with locking facility for storage of holy ash after cremation					
3.7.b	OFFICE CHAIR AND TABLE					
3.8	M.S.GRILLWORK					
	M.S. Work using 2" x 2" Box sections as per the design or recorded instruction on site					
3.9	AMENITIES					
3.9.a	DRINKING WATER SYSTEM					
3.9.b	WIFI CONNECTIVITY					
3.9.c	CCTV SURVEILLANCE					

**3.7.a : LOCKER UNITS**



**3.7.b : OFFICE CHAIR AND TABLE**



**3.8. : M. S. GRILL WORK**



**3.9.a : LOCKER UNITS**



**3.9.c : CCTV SURVILLANCE**



# CEREMONIAL YARD

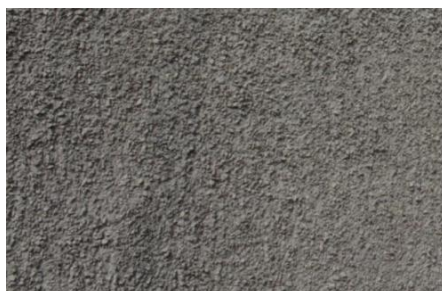
## STRUCTURE

S.NO	DESCRIPTION	UNITS	AREA	RATE	TOTAL AMOUNT	REMARKS
4.1	<b>EARTHWORK AND EXCAVATION</b> Excavation in foundations in all types of soils except in hard rock as defined by IS-1200 in both wet and dry conditions including shoring, strutting, dewatering, sub-soil rain water levelling and dressing the bottom of excavation to correct level and slope as specified in drawings or as per recorded specification on site.					
4.2	<b>FOUNDATION AND PLINTH</b> Reinforced cement concrete frame structure with 1:1.5:3 ratio and necessary reinforcement for footings, columns and plinth beams as per the structural drawings					
4.3	<b>SUPERSTRUCTURE</b> Brick Masonry in Cement mortar (1:6) for 230mm(external) and 115mm(Internal) thick walls using locally available light weight bricks or hollow cement blocks with cost and conveyance of all materials, labour charges such as scaffolding, mixing mortar, constructing masonry, lift charges, curing etc., complete for finished item of work in SUPER STRUCTURE at all heights and depths as per the architectural drawing or a recorded specification on site.					
4.4	<b>PLASTERING</b> Providing cement Plastering 20mm thick in 2 coats with a base coat of 16mm thick in CM 1:5 prop and top coat of 4mm thick in CM 1:3 prop. with trowel / sponge finish including cost and conveyance of all materials, labour charges, scaffolding charges lift charges, curing etc., complete for finished item of work for external walls as directed at all heights with proper curing to avoid settlement cracks in the structure.					

## FINISHING

4.5.a	<b>WALLS - EXTERNAL</b> All external surfaces to be finished in 6mm thk gravel uniform in size mixed with cement to get a texture and then painted with a coat of primer and two coats of ICI WEATHERSHIELD paint for external walls of approved shade including curing for 2 days, scaffolding, strutting, all materials and labour complete at all heights.
4.5.b	<b>WALLS - INTERNAL</b> All internal surfaces to be finished with a coat of primer as specified as a priming coat and further two coats with luppam and two coats of ICI paints Plastic tractor emulsion for internal walls of approved shade, scaffolding, strutting, all materials and labour complete at all heights.
4.5.c	<b>CEILING</b> All slab surfaces to be finished with a coat of primer and two coats of ICI WEATHERSHIELD paint of approved shade including curing for 2 days, scaffolding, strutting, all materials and labour complete at all heights.
4.6	<b>ELECTRICAL</b> Laying and fixing of pipes, cables in FINOLEX, Electrical boards using Galvanised boxes with ANCHOR ROMA make modular switches. Internal conduit wall pipes 1.2mm thk. In SUDHAKAR make as per electrical drawing or recorded instruction on site.

**4.5.a : WALLS - EXTERNAL**



**4.5.b : WALLS - INTERNAL**



**4.5.c : CEILING**



# TOILETS

## STRUCTURE

S.NO	DESCRIPTION	UNITS	AREA	RATE	TOTAL AMOUNT	REMARKS
6	TOILETS					
6.1	<b>EARTHWORK AND EXCAVATION:</b> Excavation in foundations in all types of soils except in hardrock as defined by IS-1200 in both wet and dry conditions including shoring, strutting, dewatering, sub-soil rain water levelling and dressing the bottom of excavation to correct level and slope as specified in drawings or as per recorded specification on site.					
6.2	<b>FOUNDATION AND PLINTH</b> Reinforced cement concrete frame structure with 1:1.5:3 ratio and necessary reinforcement for footings, columns and plinth beams as per the structural drawings					
6.3	<b>SUPERSTRUCTURE</b> Brick Masonry in Cement mortar (1:6) for 230mm(external) and 115mm(Internal) thick walls using locally available light weight bricks or hollow cement blocks with cost and conveyance of all materials, labour charges such as scaffolding, mixing mortar, constructing masonry, lift charges, curing etc., complete for finished item of work in SUPER STRUCTURE at all heights and depths as per the architectural drawing or a recorded specification on site.					
6.4	<b>PLASTERING</b> Providing cement Plastering 20mm thick in 2 coats with a base coat of 16mm thick in CM 1:5 prop and top coat of 4mm thick in CM 1:3 prop. with trowel / sponge finish including cost and conveyance of all materials, labour charges, scaffolding charges lift charges, curing etc., complete for finished item of work for external walls as directed at all heights with proper curing to avoid settlement cracks in the structure.					

## FINISHING AND FIXTURES

6.5.a	<b>WALLS - EXTERNAL</b> All external surfaces to be finished in 6mm thk gravel uniform in size mixed with cement to get a texture and then painted with a coat of primer and two coats of ICI WEATHERSHIELD paint for external walls of approved shade including curing for 2 days, scaffolding, strutting, all materials and labour complete at all heights.					
6.5.b	<b>WALLS - INTERNAL</b> All the internal wall surfaces in the toilets area to be finished in dado tile of size 1' x 1'					
6.5.c	<b>CEILING</b> All slab surfaces to be finished with a coat of primer and two coats of ICI WEATHERSHIELD paint of approved shade including curing for 2 days, scaffolding, strutting, all materials and labour complete at all heights.					
6.6	<b>TOILET FIXTURES</b>					
6.6.a	<b>TOILET CUBICLES</b>					
6.6.b	<b>W.C 'S</b>					
6.6.c	<b>URINALS</b>					
6.6.d	<b>WASH BASINS</b>					

6.5.b : WALLS - INTERNAL

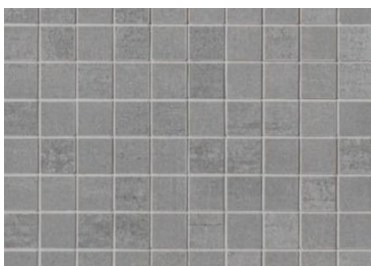
6.5.c : CEILING

6.6.a : TOILET CUBICLES

6.6.b : W.C

6.6.c : URINALS

6.6.d : WASH BASIN





# SHOWER AREA

## STRUCTURE

S.NO	DESCRIPTION	UNITS	AREA	RATE	TOTAL AMOUNT	REMARKS
5.1	<b>EARTHWORK AND EXCAVATION</b> Excavation in foundations in all types of soils except in hardrock as defined by IS-1200 in both wet and dry conditions including shoring, strutting, dewatering, sub-soil rain water levelling and dressing the bottom of excavation to correct level and slope as specified in drawings or as per recorded specification on site.					
5.2	<b>FOUNDATION AND PLINTH</b> Reinforced cement concrete frame structure with 1:1.5:3 ratio and necessary reinforcement for footings, columns and plinth beams as per the structural drawings					
5.3	<b>SUPERSTRUCTURE</b> Brick Masonry in Cement mortar (1:6) for 230mm(external) and 115mm(Internal) thick walls using locally available light weight bricks or hollow cement blocks with cost and conveyance of all materials, labour charges such as scaffolding, mixing mortar, constructing masonry, lift charges, curing etc., complete for finished item of work in SUPER STRUCTURE at all heights and depths as per the architectural drawing or a recorded specification on site.					
5.4	<b>PLASTERING</b> Providing cement Plastering 20mm thick in 2 coats with a base coat of 16mm thick in CM 1:5 prop and top coat of 4mm thick in CM 1:3 prop. with trowel / sponge finish including cost and conveyance of all materials, labour charges, scaffolding charges lift charges, curing etc., complete for finished item of work for external walls as directed at all heights with proper curing to avoid settlement cracks in the structure.					

## FINISHING

5.5.a	<b>WALLS - EXTERNAL</b> All external surfaces to be finished in 6mm thk gravel uniform in size mixed with cement to get a texture and then painted with a coat of primer and two coats of ICI WEATHERSHIELD paint for external walls of approved shade including curing for 2 days, scaffolding, strutting, all materials and labour complete at all heights.					
5.5.b	<b>WALLS - INTERNAL</b> All the wall surfaces in the shower area to be finished in dado tile of size 1' x 1'					
5.5.c	<b>CEILING</b> All slab surfaces to be finished with a coat of primer and two coats of ICI WEATHERSHIELD paint of approved shade including curing for 2 days, scaffolding, strutting, all materials and labour complete at all heights.					

**5.5.a : WALLS - EXTERNAL**



**5.5.b: WALLS - INTERNAL**



**5.5.c: CEILING**



# PATHWAYS AND LANDSCAPED AREAS

## PATHWAYS

S.NO	DESCRIPTION	UNITS	AREA	RATE	TOTAL AMOUNT	REMARKS
7.1	<b>GROUNDWORK CONSOLIDATION</b> Ground for the pathways on the site to be marked as per drawing , levelled and ramed to a complete consolidation.					
7.2	<b>BASE</b> Base to be prepared in sand and levelled as per the prescribed flooring levels					
7.3	<b>FLOORING</b> Pathway flooring to be finished in paver blocks as per material specification					

## LANDSCAPED AREAS

8.1	<b>LAWN AREAS</b>					
8.2	<b>DRY LANDSCAPE</b> All the dry garden areas to be done in accordance with the drawing given by the landscaping consultant pre approved by the architect					
8.3	<b>PODIUMS FOR RITUAL YARD</b> All the podium areas to be finished in polished granite and A PODIUM of 7' x 3' x 2.5' cladded in granite to be in the centre.					
8.4	<b>EDGE OF LANDSCAPED AREAS</b> All the edges of the landscaped areas, dry gardens and the walkways to be contained using kota stone placed vertically into the ground at least 1 feet					

7. : PATHWAYS



8.1 : LAWN AREAS



8.2 : DRY LANDSCAPE



8.4 : EDGE OF LANDSCAPED AREAS

