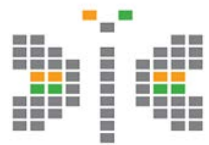


# Covid War Room



**Smart City**  
MISSION TRANSFORM-NATION

---

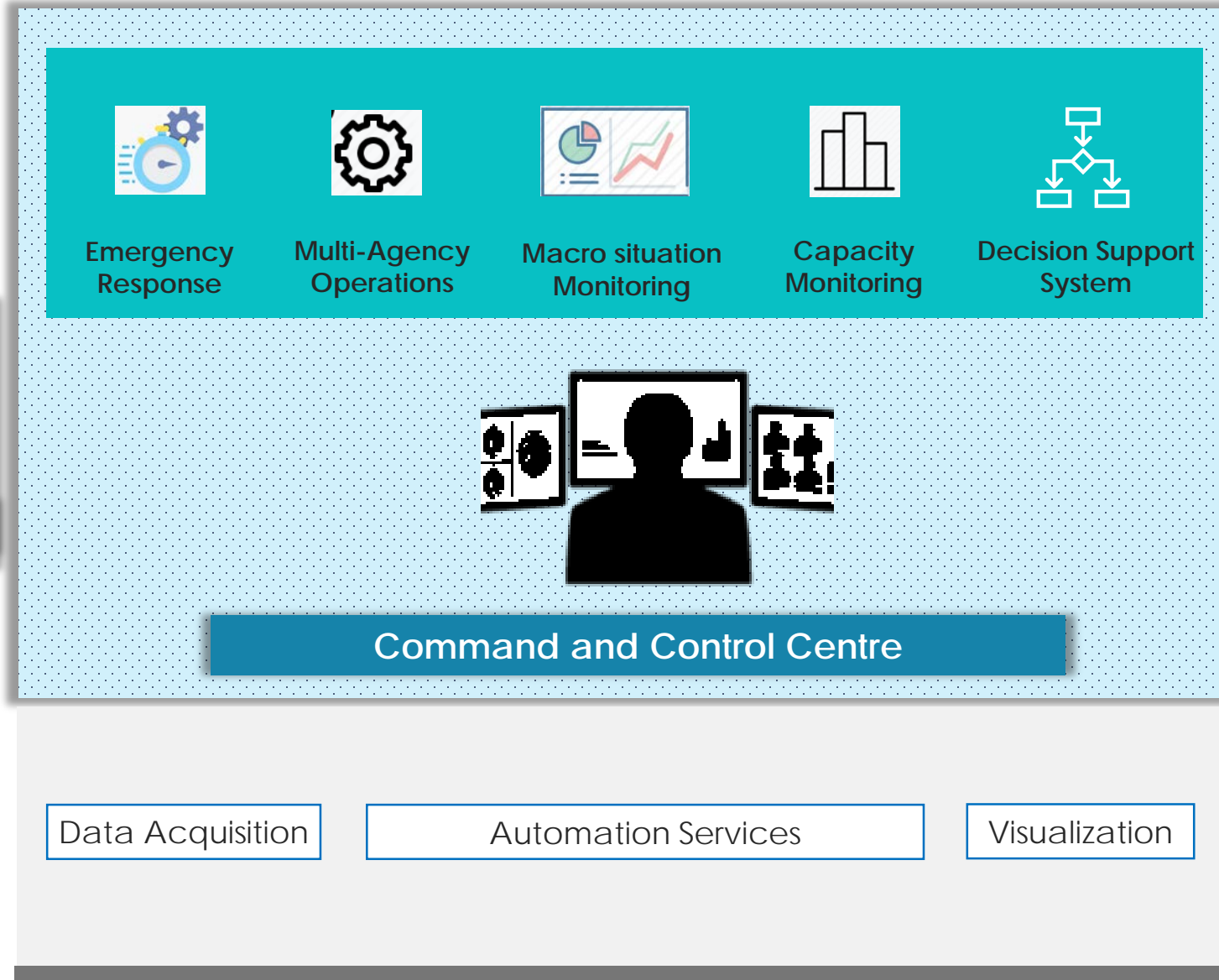
#	Topic	Duration	By
1	Covid War Room – Presentation	6 minutes	Aneel K
2	Covid War Room Live Demo – BBMP Bengaluru <ul style="list-style-type: none"><li>- World vs City Monitoring, Operational Activities, Capacity Monitoring</li><li>- Containment, Hunger helplines</li><li>- Solid Waste Management - Cleanliness</li></ul>	2 minutes	Vijaya Varanasi

---

# Model War Room Solutions

Platform/Component	Description
<b>Mandatory Services / Functionality / Apps</b>	
ICCC (Integrated Command & Control Centre Platform)	<ul style="list-style-type: none"> <li>Pre canned Dashboards with operator access</li> <li>World and State Dashboard (Reported, Recovered, Active, Deaths)</li> <li>Operational Dashboard (Zone wise cases, Symptoms, Age and Gender wise, Map view - Hospitals, Fever Clinics)</li> <li>Capacity Dashboard (Screening Samples, Negative, Positive, Awaiting, Masks, PPEs, Hospitals - Beds, Clinics, Beds, ICU, Ventilators)</li> <li>Pre canned reports</li> <li>Pre canned SOPs</li> <li>Integration of key applications for COVID only</li> <li>Integration of 3rd party Application APIs: max 2 other applications (2 APIs per app and map layers integration via <a href="#">geojson</a>)</li> <li>Integration Data Sources: APIs, Google sheets with pre-built templates</li> </ul>
Training & handholding	<ul style="list-style-type: none"> <li>Web based User Guide</li> <li>Remote training for operator</li> </ul>
Support & Maintenance	<ul style="list-style-type: none"> <li>Basic Email support with 48 hours turnaround time</li> </ul>
Hosting	<ul style="list-style-type: none"> <li>Multi-tenanted cloud</li> </ul>
<b>Optional Functionality / Apps (depending upon the city's preference or availability of already implemented Solutions / Apps)</b>	
Field Officer Mobile Application	<ul style="list-style-type: none"> <li>App is for last mile activities, data collection, iOS, Android native latest versions only</li> <li>Mobile App (with max 3 customized case sheets to collect field information)</li> </ul>
Citizen Mobile Application	<ul style="list-style-type: none"> <li>App for Tracking, <a href="#">Assessments</a> and education</li> <li>Only 2 external app integrations</li> </ul>
Collaboration	<ul style="list-style-type: none"> <li>Cisco <a href="#">Webex</a> Teams Collaboration platform to interact with multiple stakeholders during emergencies through chat/voice/video</li> <li>Integrated as a part of emergency SOP on ICCC Platform</li> <li>5 group or master user licenses to create groups or schedule concurrent meetings.</li> <li>Each group/<a href="#">meetings</a> can be joined by up to 1000 users.</li> <li>web &amp; mobile clients</li> </ul>
ESRI GIS Solution	<ul style="list-style-type: none"> <li>As made available by ESRI through Hub Licenses</li> </ul>
Volunteer Management, NGO Portal, Inventory Management System	<ul style="list-style-type: none"> <li>Developed by Infosys for BBMP</li> </ul>

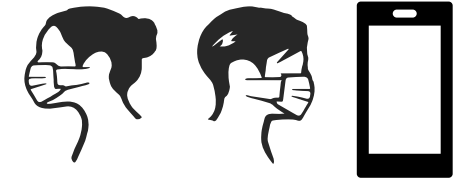
# CoVER Solution Components



Field Officer App

Data Collection

Last mile activities



Citizen App

Citizen Engagement

Up-to-date Information sharing

Real-time Alerts & Notifications

# Key Problem Areas of COVID War Room

- Covid case data collection on real-time basis, GIS Mapping & Monitoring
- Management of existing capacities (Hospital Beds, Quarantine Facilities, PPEs, etc.)
- Containment zone mapping & monitoring
- Contact Tracing (of Covid +ve cases)
- House to house surveys & their data capture
- Inbound Migrant Workers Tracking
- Media Management
- Sharing of up-to-date information to general public
- Beneficiary scheme disbursements
- Food / Ration distribution to the needy
- Monitoring of Sanitisation work within the city
- Grievance Redressal
- Monitoring of lockdown related challenges, SOP Implementation

1. Dynamic Forms (Patient, Suspect, ...)

1. Common Operating Picture on Geospatial

Grievance Reporting from Citizen Application or integration with existing citizen grievance applications or call centres like 104.

Analysis of different types of grievances

Post-lockdown Government SOP guidelines monitoring of usecases like Mask Compliance, Social Distancing, Crowd Bunching etc to be integrated to the ICCC platform for enforcement.

Real time  
Field  
dynamic  
schedule  
info  
the

The screenshot shows a software interface with a table of SOP instances and a map of Karnataka. The table has columns for SOP Name, Event Name, Status, Criticality, SLA, Created, and Actions. The map shows the location of Karnataka.

SOP Name	Event Name	Status	Criticality	SLA	Created	Actions
DisasterManagement_EmergencyAlert_Bbmp_Event SOP	DisasterManagement_EmergencyAlert_Bbmp_Event	Open	High	24 mins	16-Apr-2020 19:35:21	NA
DisasterManagement_EmergencyAlert_Bbmp_Event SOP	DisasterManagement_EmergencyAlert_Bbmp_Event	Open	High	24 mins	16-Apr-2020 19:34:42	NA
DisasterManagement_EmergencyAlert_Bbmp_Event SOP	DisasterManagement_EmergencyAlert_Bbmp_Event	Open	High	24 mins	16-Apr-2020 19:34:24	NA

Location: Karnataka

Event Name: DisasterManagement\_EmergencyAlert\_Bbmp\_Event

Description: Emergency Alert

Actions: WebExOutBou, Close, UserTask Assigned

Live Demo

# CoVER Solution Process Flow

## Multiple Data Sources



Data from health department



Data from police department



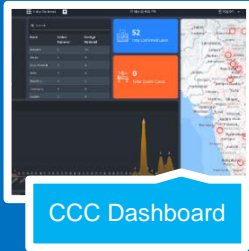
Data from social welfare department



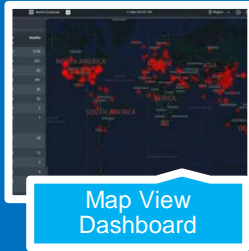
Data from Disaster Management department



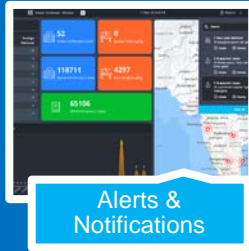
## CoVER Platform



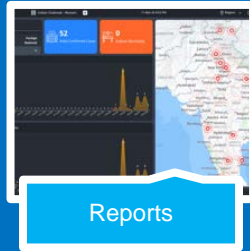
CCC Dashboard



Map View Dashboard



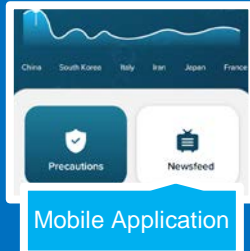
Alerts & Notifications



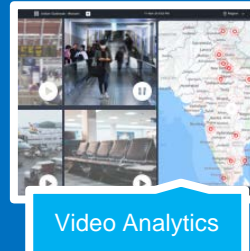
Reports



Collaboration



Mobile Application



Video Analytics



SOP Module

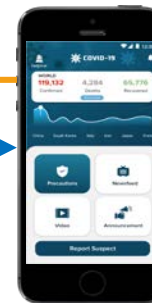
1. Log travel history
2. Mark themselves self-quarantine
3. Report suspects
4. Ask for emergency help



Citizen Mobile App

1. Avail educational information
2. Avail treatment guide
3. Receive alerts/ notifications

1. Data feed on the go from hospitals / isolation centres
2. Realtime information on inventory, rosters, test kits, PPE kits



Field Officer Mobile App

1. Realtime interaction with CCC
2. Track live progress, inventory
3. Connect with the nearby field staff

1. Alerts & Notifications
2. Live Progress
3. Incidents - actions



Gov Officials/ PDS

**Thank You**