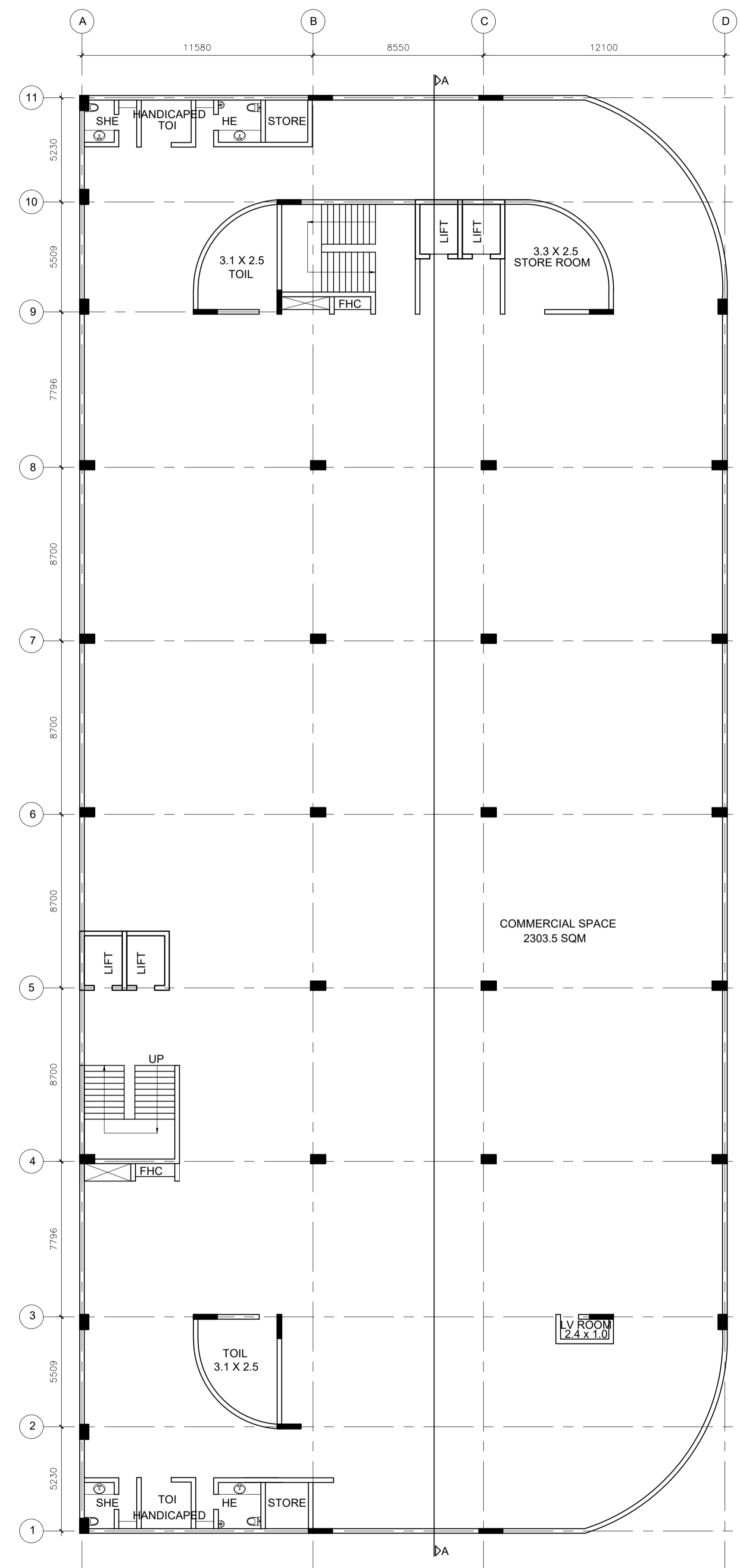
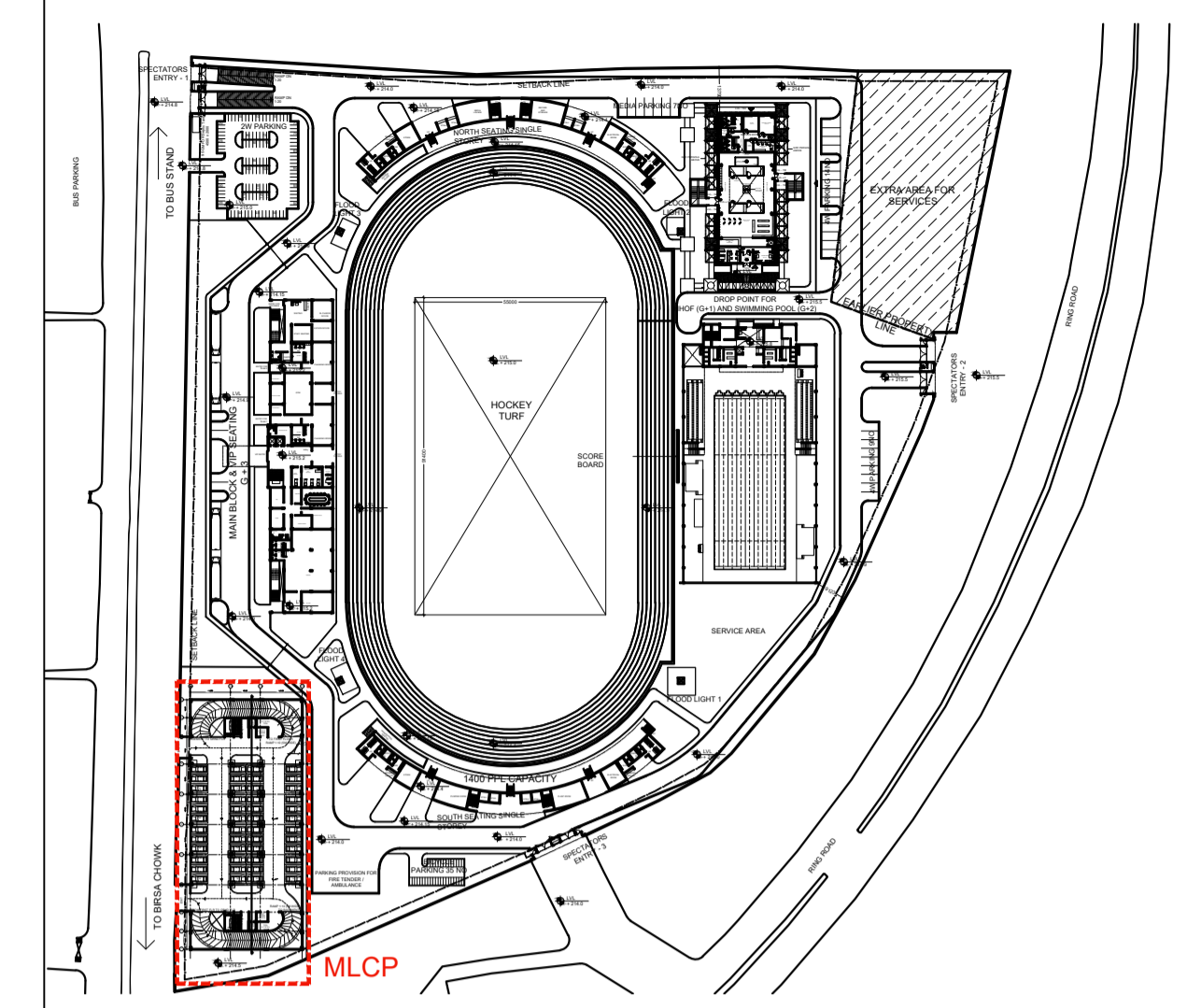


TYPICAL 1ST AND 2ND FLOOR PLAN

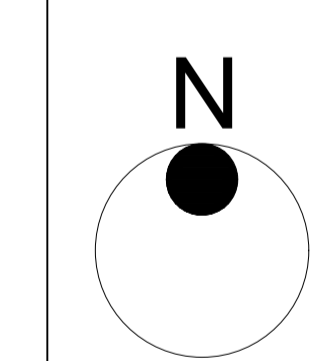


TYPICAL 3RD 4TH AND 5TH FLOOR PLAN



KEY PLAN

EACH FLOOR PLATE AREA = 2196 SQM
 TOTAL CAR SPACE PER FLOOR = 47 NO
 CAR SPACE PER CAR = 2196 / 48 = 46.7 SQM



SIGN.															
INITIALS															
REVISIONS															
PO SIGN.															04-07-2017
INITIALS															
ISSUE	DRN	DSN	CHD	CV	EL	IC	ME	PE/PM	APPD	DATE					
											CLEARED				

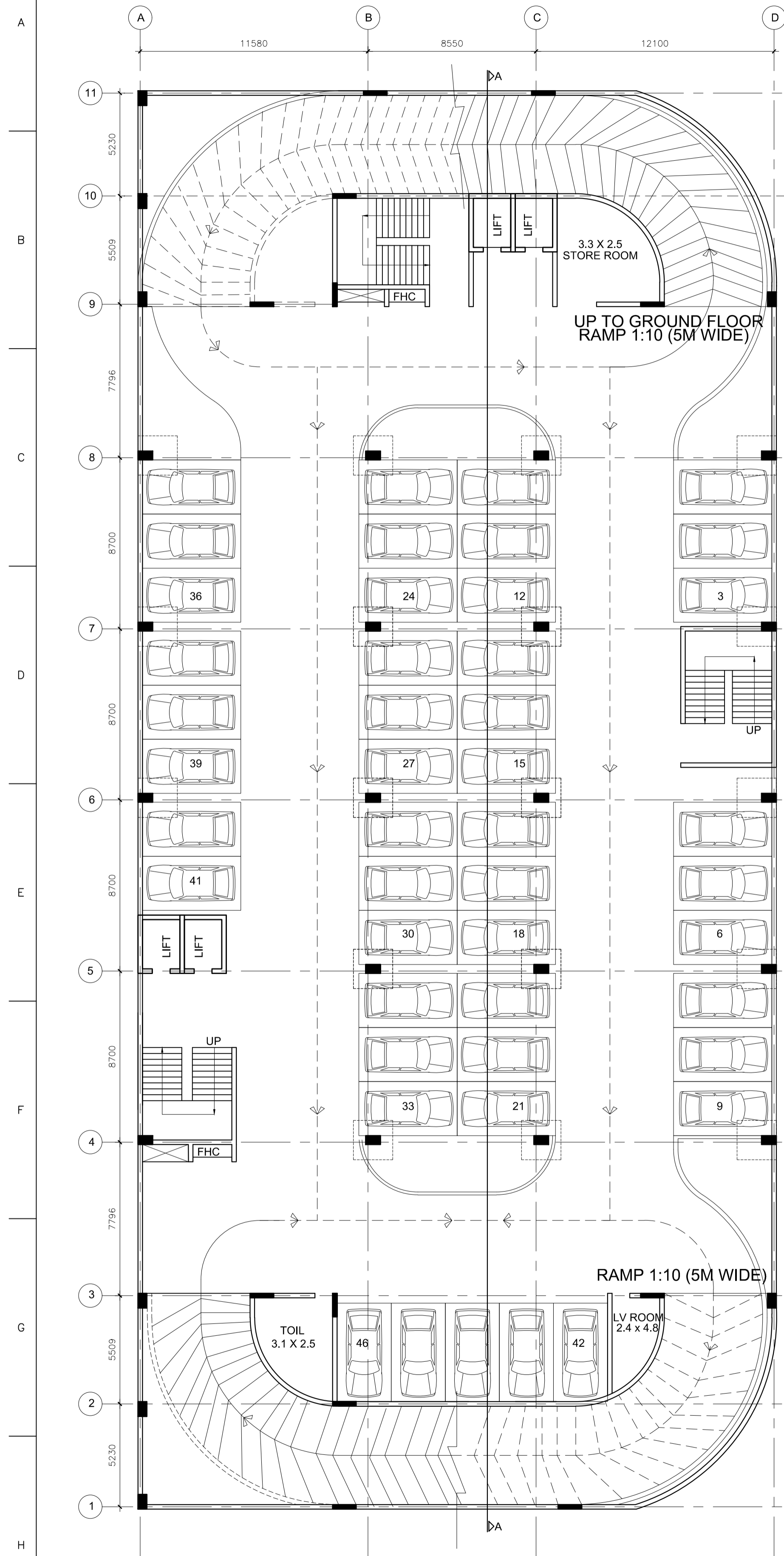
FOR APPROVAL
DO NOT SCALE
 P (PRELIMINARY) ISSUES ARE NOT TO BE USED FOR CONSTRUCTION / FABRICATION BUT ARE ISSUED FOR LIMITED PURPOSES ONLY AS INDICATED IN THE SMALL BLOCK ABOVE THIS BLOCK.
 CONSTRUCTION / FABRICATION WORK IS PERMITTED ON 'R' (RELEASED) ISSUES ONLY.
 INFORMATION CONTAINED WITHIN 'HOLD' IS NOT RELEASED FOR CONSTRUCTION / FABRICATION. FIELD MUST GET DESIGN OFFICE TO CLEAR 'HOLDS' IN TIME BEFORE PROCEEDING WITH ANY CONSTRUCTION / FABRICATION WORK RELATED TO 'HOLDS'.
 Proprietary rights of the information contained herein belong to TCE. This information is intended to be used for the mentioned purpose/project only. In case of misuse of information and any claim arising thereof, cost and consequence will be on the party misusing the information.
 FILE NAME : MLCP 07-06-18_2.DWG

ROURKELA SMART CITY LTD
 PDMC FOR AREA BASED DEVELOPMENT

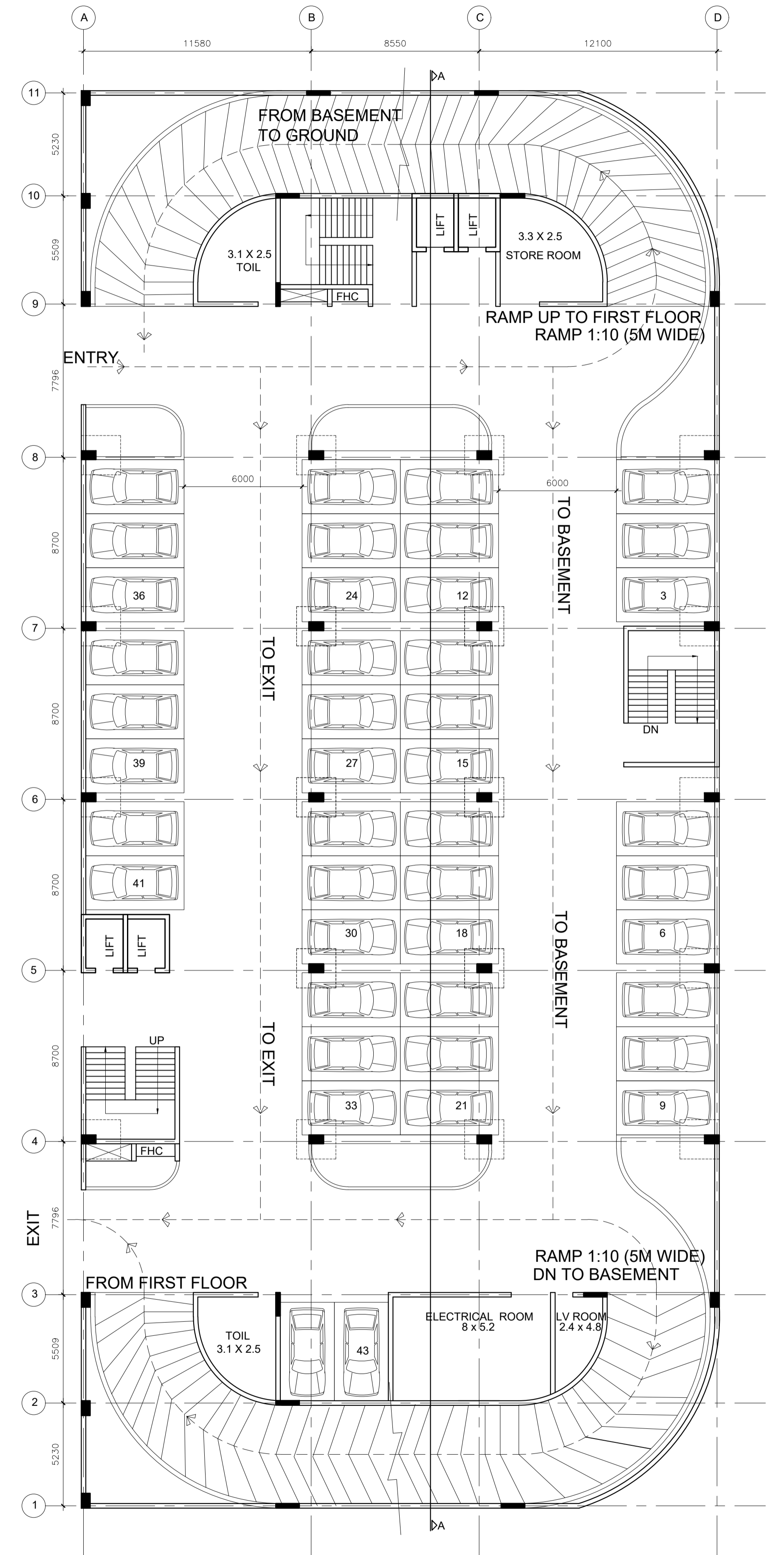
BIRSA MUNDA STADIUM
 MLCP
 FLOOR PLAN

TATA CONSULTING ENGINEERS LIMITED

SCALE : 1:150
 DWG NO. TCE.10839A-AC-1010-AC-10161
 DC & DISC: PUNE & INFRA
 ISSUE PO
 TCE FORM NO. 091 RO

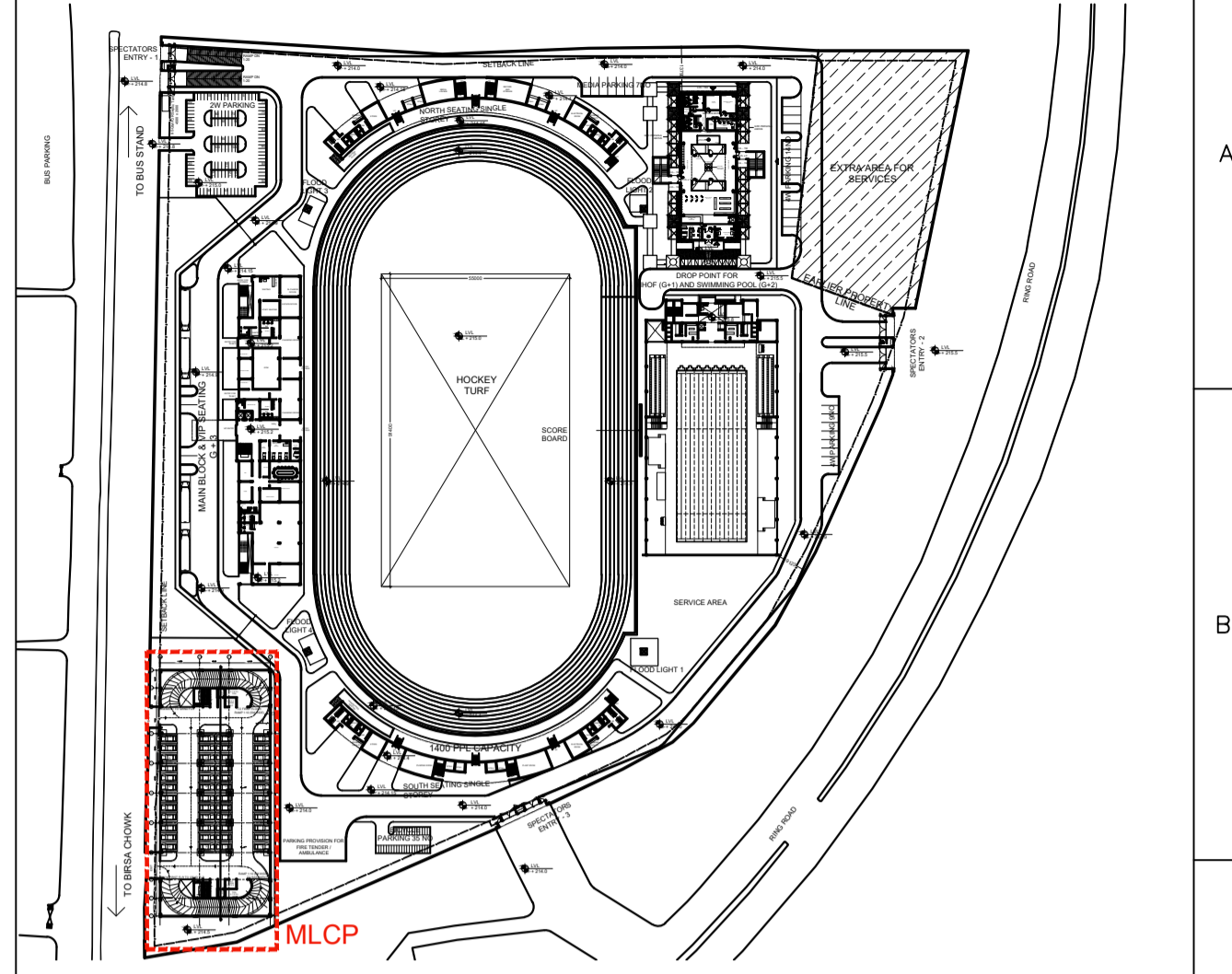


BASEMENT FLOOR PLAN

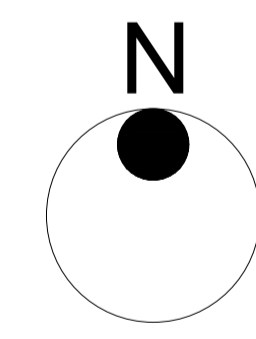


GROUND FLOOR PLAN

FOR APPROVAL
DO NOT SCALE
 "P" (PRELIMINARY) ISSUES ARE NOT TO BE USED FOR CONSTRUCTION / FABRICATION BUT ARE ISSUED FOR LIMITED PURPOSES ONLY AS INDICATED IN THE SMALL BLOCK ABOVE THIS BLOCK.
 CONSTRUCTION / FABRICATION WORK IS PERMITTED ON "R" (RELEASED) ISSUES ONLY.
 INFORMATION CONTAINED WITHIN "HOLD" IS NOT RELEASED FOR CONSTRUCTION / FABRICATION. FIELD MUST GET DESIGN OFFICE TO CLEAR "HOLDS" IN TIME BEFORE PROCEEDING WITH ANY CONSTRUCTION / FABRICATION WORK RELATED TO "HOLDS".
 Proprietary rights of the information contained herein belong to TCE. This information is intended to be used for the mentioned purpose/project only. In case of misuse of information and any claim arising thereof, cost and consequence will be on the party misusing the information.
 FILE NAME : MLCP 07-06-18_2.DWG



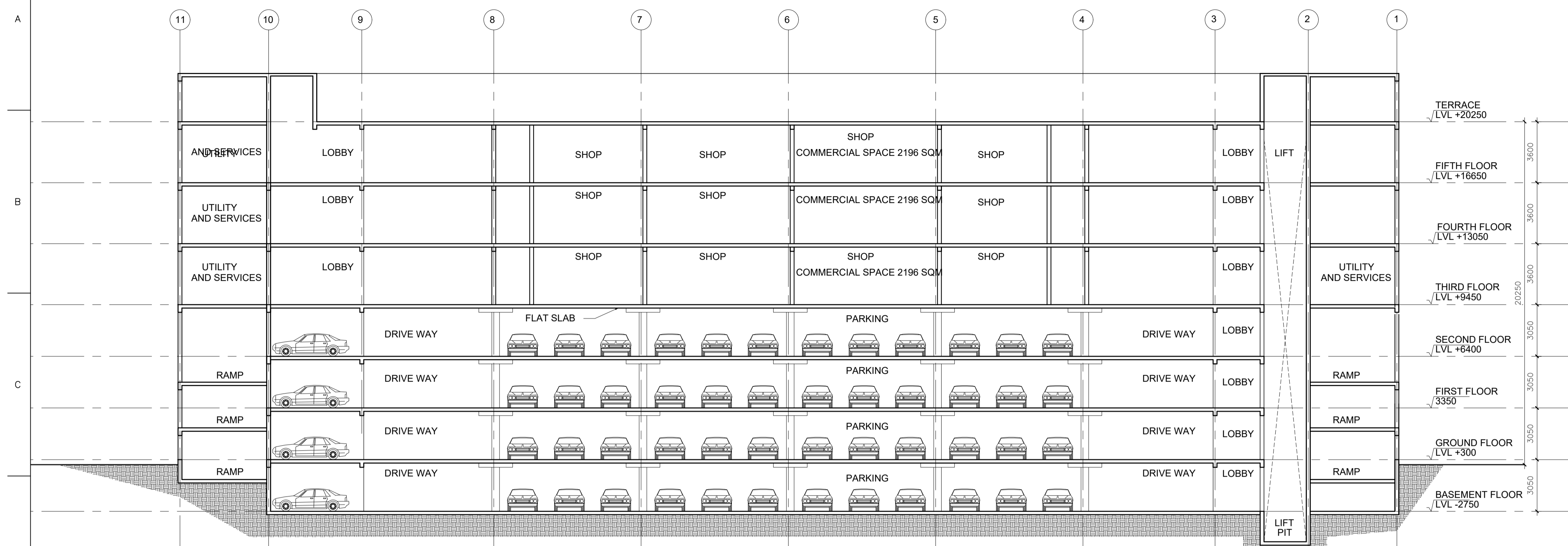
KEY PLAN



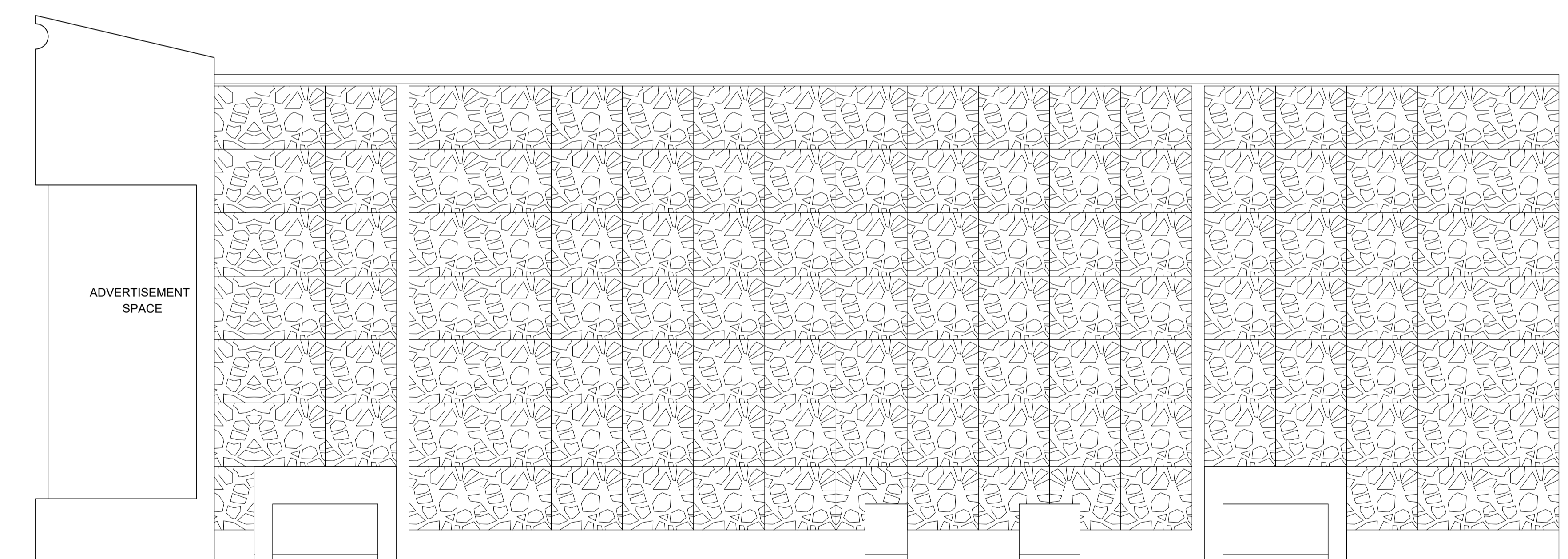
SIGN.															
INITIALS															
REVISIONS															
SIGN.															
INITIALS															
PO SIGN.															04-07-2017
INITIALS															
ISSUE	DRN	DSN	CHD	CV	EL	IC	ME	PE/PM	APPD	DATE					
							CLEARED								

ROURKELA SMART CITY LTD
 PDMC FOR AREA BASED DEVELOPMENT
BIRSA MUNDA STADIUM
 MLCP
 FLOOR PLAN

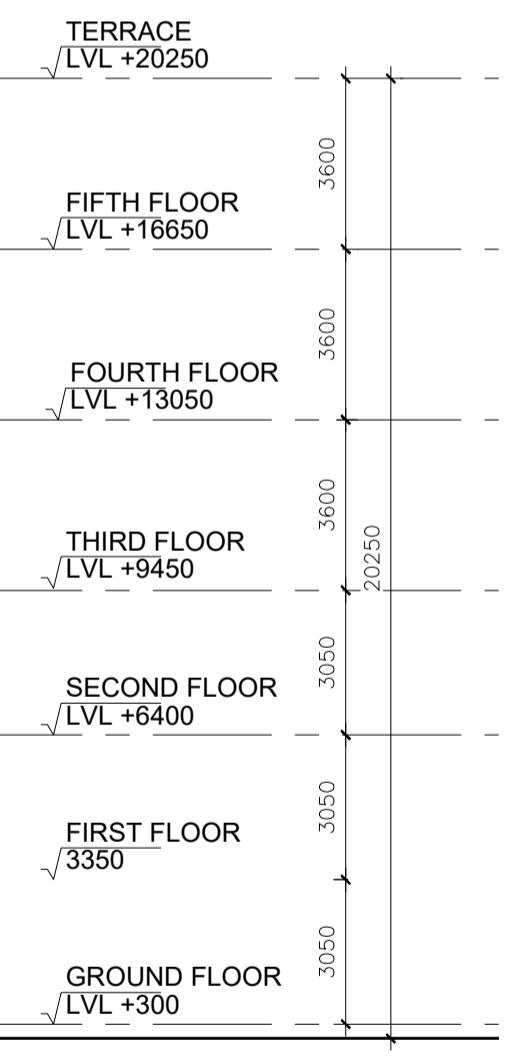
TATA CONSULTING ENGINEERS LIMITED



SECTION AA



FRONT ELEVATION



FOR APPROVAL
DO NOT SCALE
* (PRELIMINARY) ISSUES ARE NOT TO BE USED FOR CONSTRUCTION / FABRICATION BUT ARE ISSUED FOR LIMITED PURPOSES ONLY AS INDICATED IN THE SMALL BLOCK ABOVE THIS BLOCK.
CONSTRUCTION / FABRICATION WORK IS PERMITTED ON 'R' (RELEASED) ISSUES ONLY.
INFORMATION CONTAINED WITHIN 'HOLD' IS NOT RELEASED FOR CONSTRUCTION / FABRICATION. FIELD MUST GET DESIGN OFFICE TO CLEAR 'HOLDS' IN TIME BEFORE PROCEEDING WITH ANY CONSTRUCTION / FABRICATION WORK RELATED TO 'HOLDS'.
Proprietary rights of the information contained herein belong to TCE. This information is intended to be used for the mentioned purpose/project only. In case of misuse of information and any claim arising there of, cost and consequence will be on the party misusing the information.
FILE NAME : MLCP 07-06-18_2.DWG

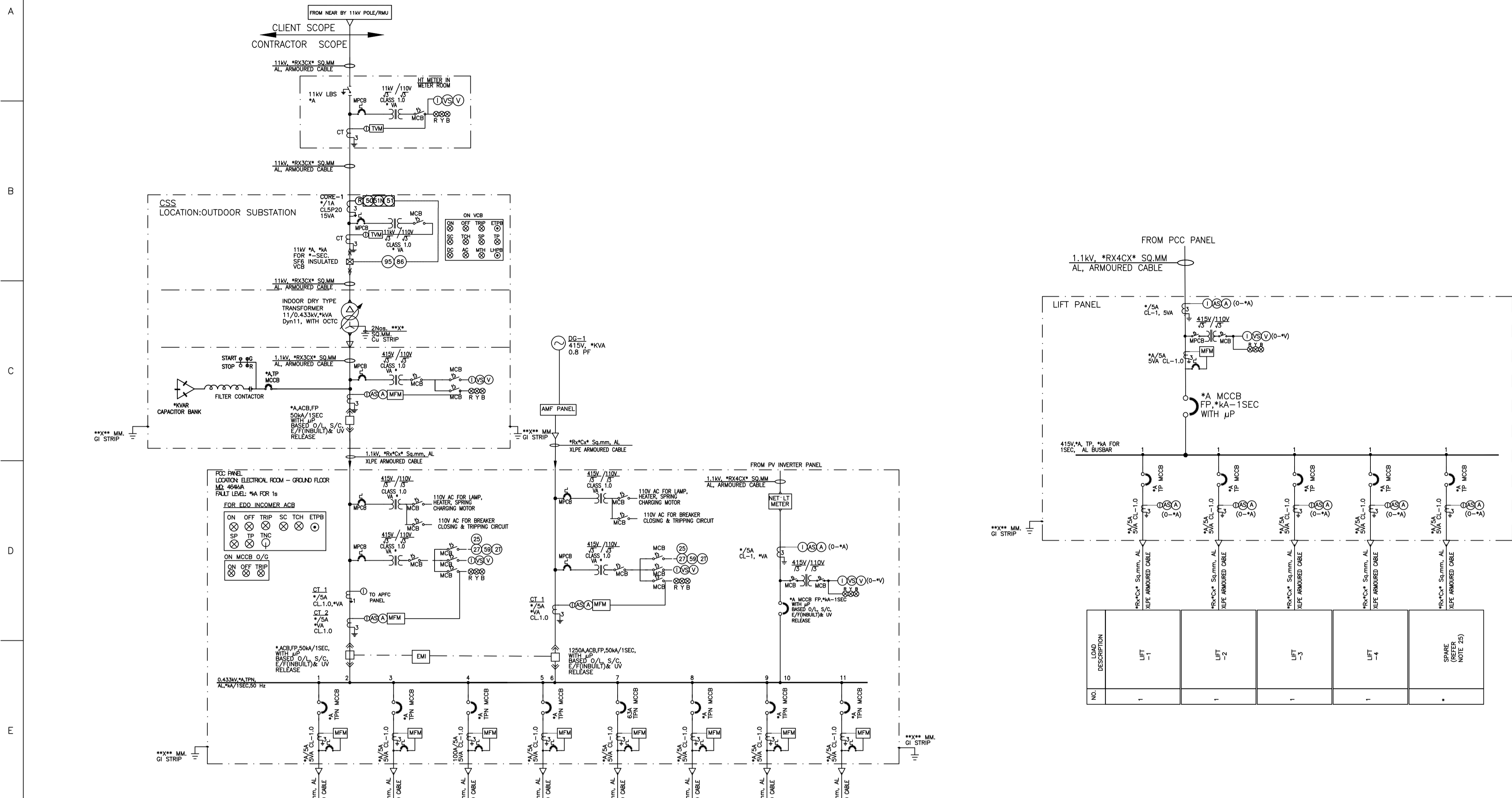
SIGN.	INITIALS																
REVISIONS	SIGN.	INITIALS															
PO SIGN.	INITIALS																04-07-2017
ISSUE	DRN	DSN	CHD	CV	EL	IC	ME		PE/PM	APPD	DATE						
								CLEARED									

ROURKELA SMART CITY LTD
PDMC FOR AREA BASED DEVELOPMENT

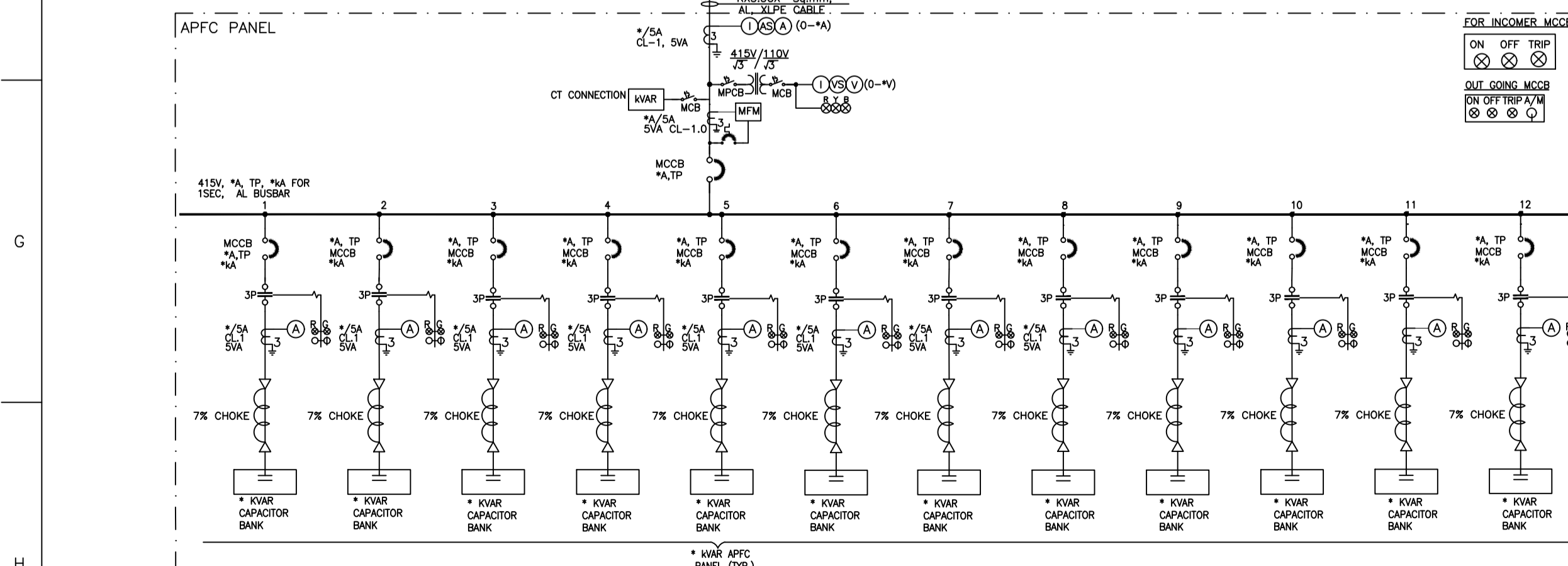
BIRSA MUNDA STADIUM
MLCP
SECTION AND ELEVATION

TATA CONSULTING ENGINEERS LIMITED

SCALE : 1:150 DWG NO. TCE.10839A-AC-1010-AC-10163 ISSUE PO
DC & DISC: PUNE & INFRA



NO.	LOAD DESCRIPTION	NO.	LOAD DESCRIPTION	NO.	LOAD DESCRIPTION	NO.	LOAD DESCRIPTION
1	FLOOR LIFT	4	APFC PANEL	7	FLUORESCENT VENTILATION PANEL (PARKING)	10	OUTDOOR LIGHTING PANEL
2	FLUORESCENT VENTILATION PANEL (COMMON FLOORS)	5	APFC PANEL	8	COMMON AREA DB	11	LIFT PANEL
3	COMMON AREA DB	6	OUTDOOR LIGHTING PANEL	9	OUTDOOR LIGHTING PANEL	12	SPACE (REFER NOTE 25)



- NOTES: 1. RATINGS OF THE CAPACITORS SHALL BE AFTER THE DERATING IN THE FILTER.
- 2. CONTACTOR SHALL BE SUITABLE FOR CAPACITOR DUTY APPLICATION.
- 3. APFC RELAY SHALL BE SUITABLE FOR 10V2 STAGE.

LEGEND:

(Symbol)	LOAD BREAK SWITCH	R	RELAYING
(Symbol)	AIR CIRCUIT BREAKER (DRAW OUT)	I	INSTRUMENTATION
(Symbol)	VACUUM CIRCUIT BREAKER (SF6 ENCLOSED)	95	TRIP SUPERVISION RELAY
(Symbol)	CHANGE OVER SWITCH	86	LOCK OUT RELAY
(Symbol)	MCB	27-3/4	UNDERVOLTAGE RELAY
(Symbol)	MCCB	81	UNDERFREQUENCY RELAY
(Symbol)	CABLE GLAND	SC	SPRING CHARGED
(Symbol)	INDICATING LAMP	TCH	TRIP CIRCUIT HEALTHY
(Symbol)	PUSH BUTTON	(50)	INST. O/C PROTECTION
(Symbol)	CURRENT TRANSFORMER (CT) (FIGURE INDICATES NO. OF CT's)	(50N)	INST. E/F PROTECTION
(Symbol)	POTENTIAL TRANSFORMER	(51)	IDMT. O/C PROTECTION
(Symbol)	AMMETER SELECTOR SWITCH	49W	WINDING TEMP. HIGH INDICATOR WITH ALARM & TRIP CONTACTS
(Symbol)	ANALOG AMMETER	(VS)	VOLTMETER SELECTOR SWITCH
(Symbol)	DISTRIBUTION TRANSFORMER	(V)	ANALOG VOLTMETER
(Symbol)	MULTIFUNCTION METER	(C/A)	CONTACTOR
(Symbol)	CHOKE	(O/E)	PUSH BUTTON STATION
(Symbol)	DIESEL GENERATOR	(M)	ELECTRICAL PANEL
(Symbol)		(A-M)	AUTO MANUAL SELECTOR SWITCH

- NOTES:**
- RATINGS, SIZES & QUANTITIES OF EQUIPMENTS MARKED AS "*" NEED TO BE CALCULATED BY THE CONTRACTOR BASED ON TENDER SPECIFICATIONS. CONTRACTOR SHALL SUBMIT THE TRANSFORMER SIZING & CORRESPONDING BREAKER SIZE CALCULATIONS DURING DETAILED ENGINEERING STAGE.
 - RATINGS, SIZES & QUANTITIES OF EQUIPMENTS (WHEREVER GIVEN) ARE MINIMUM REQUIREMENTS AND ARE FOR REFERENCE ONLY. BIDDER SHALL CALCULATE EQUIPMENT SIZES & RATINGS BASED ON DESIGN CRITERIA GIVEN IN HV SYSTEM.
 - VA BURDENS SHOWN ARE INDICATIVE. CONTRACTOR TO INDICATE BURDEN AS PER ACTUAL REQUIREMENT.
 - INTERTRIPPING & CLOSING INTERLOCK SHALL BE PROVIDED BETWEEN TRANSFORMER FEEDER (11KV) AND LT PANEL CALCULATION DURING DETAILED ENGINEERING STAGE.
 - CT AND PT FOR HT METERING SHALL BE AS PER DISCOM.
- LV SYSTEM:**
- ACB
 - 415V PCC/LT FEEDER PANEL INCOMER ACB FEEDERS SHALL BE FP, EDO TYPE, MICROPROCESSOR BASED O/C, S/C & INBUILT E/F AND UV RELEASES.
 - ALL OTHER ACBs EXCEPT FOR APFC INCOMER SHALL BE TPN, MDO TYPE, MICROPROCESSOR BASED O/C, S/C & INBUILT E/F RELEASES.
 - MCCB
 - 415V PCC/LT FEEDER PANEL INCOMER MCCB FEEDERS SHALL BE FP, FIXED TYPE, MICROPROCESSOR BASED O/C, S/C & INBUILT E/F RELEASES AND OUTGOING MCCB SHALL BE WITH O/C & S/C PROTECTION.

- GENERAL NOTES:**
- THIS SLD SHOWS THE SCHEME FOR THE DISTRIBUTION OF THE POWER FOR THE MLCP IN BIRSA SPORTS COMPLEX.
 - BIDDER HAS TO DO DETAIL ENGINEERING AND WORK OUT THE RATINGS OF THE EACH COMPONENT.
 - ALL THE EQUIPMENTS SHOULD BE AS PER RELEVANT IS/IEC STANDARD.
 - CONTROL WIRING SHALL BE WITH 1100 VOLTS GRADE FRIS PVC INSULATED, 1.5 SQ.MM. STRANDED COPPER WIRE FOR CONDUIT SHALL BE OF 1.5 SQ.MM. FOR CT SECONDARY WIRING.
 - ALL OUTGOING CTs SHALL BE OF 2 SECONDARY.
 - ALL CONTACTORS SHALL BE OF AC3 DUTY.
 - WIDTH OF CONTACTOR SHALL BE MIN 500MM AND CABLE ALLEY SHALL BE 300MM MIN.
 - ALL AIR CIRCUIT BREAKERS SHALL BE WITH $I_{cs}=I_{cu}I_{cw}=100\%$ & ALL MCCBs SHALL BE WITH $I_{cs}=I_{cu}=100\%$.
 - ALL PANELS INCLUDING PCC/LT FEEDER PANEL CURRENT RATING ABOVE 600A SHALL HAVE ACBs.
 - ALL INDICATIONS, TRIP/CLOSING COILS OF ACBs ON PCC WILL BE ON 110V AC SUPPLY SPRING CHARGING TENDER.
 - VENDORS TO ENSURE TYPE-3 CO-ORDINATION FOR ALL MOTOR FEEDERS. MOTOR STARTERS SHALL BE PROVIDED WITH SWING PASSING PREVENTER. AMMETERS IN MOTOR FEEDERS SHALL BE PROVIDED WITH SUPPRESSED SCALE UP TO 6 TIMES FULL LOAD CURRENT FOR INDICATING STARTING CURRENT.
 - ON ON AND TRIP POSITION OF MCCBs SHALL BE CLEARLY INDICATED. OPERATING HANDLE FOR OPERATING MCCBs WITH THE DOOR CLOSED INTERLOCK SHALL BE PROVIDED. ALL MCCB FEEDERS ON ALL PANELS SHALL BE PROVIDED WITH TRIP POSITION INDICATING LAMPS THROUGH AUXILIARY CONTACTS.
 - WHEREVER HT PANEL IS PROVIDED, CONTROL SUPPLY SHALL BE DERIVED FROM INBUILT DC POWER PACK. FOR ALL PANEL CONTROL SUPPLY OF 110V AC (DERIVED FROM 230V AC) SHALL BE PROVIDED.
 - MCCB TERMINALS SHALL BE SHROUDED AND SHALL BE DESIGNER TO RECEIVE CABLE LOGS FOR RELEVANT CABLE SIZES.
 - ALL INDICATING LAMPS SHALL BE MULTICHIP LED CLUSTER TYPE.
 - 1/C MULTIFUNCTION METER FOR LT PCC, DC PCC, APFC PANEL WILL BE RISH MASTER 3440/ EQUIVALENT. O/G MULTIFUNCTION METER WILL BE RISH MASTER 3430/EQUIVALENT.
 - ALL CONTACTORS & TIMERS SHALL BE DIN RAIL MOUNTED.
 - FIELD CLEARING TIME TO BE CONSIDERED WHILE SIZING OF CABLES SHALL BE AS FOLLOWS:
a) PCC I/C : 1 SEC
b) TRANSFORMER PRIMARY: 0.18 SEC
c) ALL PANELS SHALL BE EXTENDIBLE ON BOTH SIDES.
 - ALL PANELS SHALL BE EXTENDIBLE ON BOTH SIDES. THE DISTANCE BETWEEN THE SLD FOR INTEGRATION OF THE SOLAR WITH THE DISTRIBUTION SYSTEM THIS METHODOLOGY NEED TO BE VERIFIED WITH THE STATE ELECTRICITY BOARD AND THE DISTRIBUTION BOARD.
 - SEPARATE PANEL FOR HVAC FIRE WATER PUMP WILL BE PART OF RESPECTIVE BOQ.
 - ONLY PROVISION FOR NET METERING SHALL BE DONE BY CONTRACTOR, SUPPLY OF THE SAME IS UNDER RSCL.
 - SOLAR POWER SUPPLY WILL NOT BE ON WHEELING ARRANGEMENT.
 - MINIMUM 20% SPARE ARE TO BE PROVIDED WITH ATLEAST ONE FOR EACH RATING FEEDER.
 - LV PANELS FOR HVAC, PLUMBING, FIRE FIGHTING SHALL BE CONSIDERED IN THEIR RESPECTIVE BOQ/TENDER.

TENDER PURPOSE ONLY

DO NOT SCALE

* (PRELIMINARY) ISSUES ARE NOT TO BE USED FOR CONSTRUCTION / FABRICATION BUT ARE ISSUED FOR LIMITED PURPOSES ONLY AS INDICATED IN THE SMALL BLOCK ABOVE THIS BLOCK.

CONSTRUCTION / FABRICATION WORK IS PERMITTED ON 'R' (RELEASED) ISSUES ONLY.

INFORMATION CONTAINED WITHIN 'HOLD' IS NOT RELEASED FOR CONSTRUCTION / FABRICATION. FIELD MUST GET DESIGN OFFICE TO CLEAR 'HOLD' IN TIME BEFORE PROCEEDING WITH ANY CONSTRUCTION / FABRICATION WORK RELATED TO 'HOLD'.

Proprietary rights of the information contained herein belong to TCE. This information is intended to be used for the mentioned purpose only. In case of misuse of information and any claim arising thereof, cost and consequence will be on the party misusing the information.

FILE NAME : 10839A-EL-4002-AU-40021-REV-P0.dwg

ROURKELA SMART CITY LTD
PgMC FOR AREA BASED DEVELOPMENT

SINGLE LINE DIAGRAM FOR
BIRSA STADIUM - MLCP

TATA CONSULTING ENGINEERS LIMITED
MUMBAI

SCALE : NTS
DWG NO : TCE.10839A-EL-4002-AU-40021
ISSUE PO