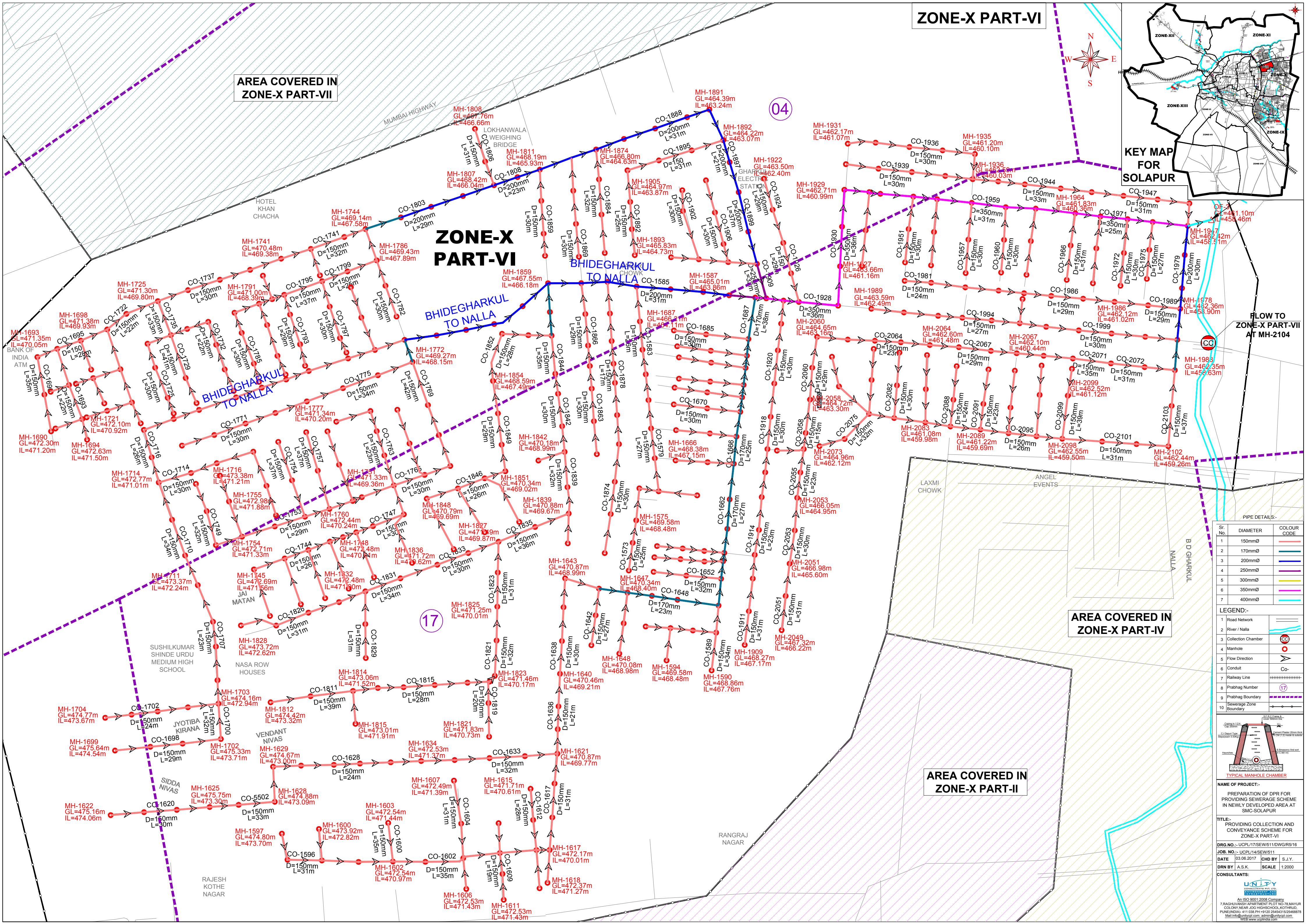
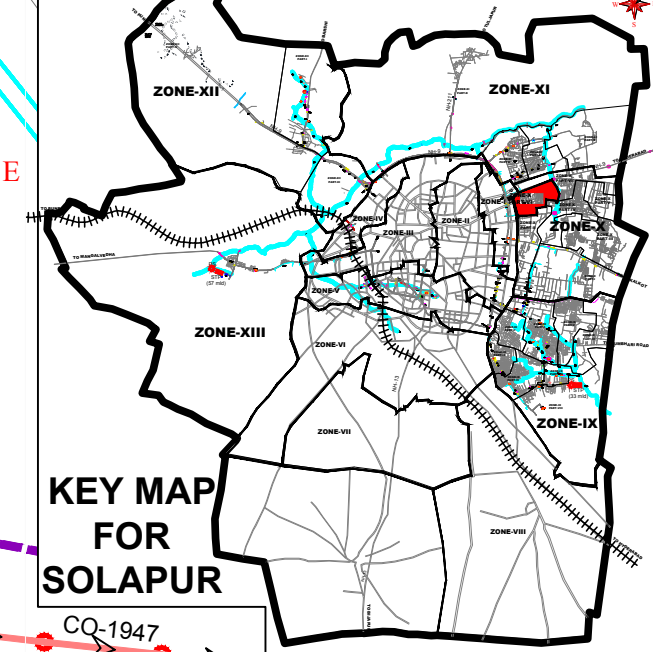


ZONE-X PART-VI

AREA COVERED IN ZONE-X PART-VII

KEY MAP FOR SOLAPUR



ZONE-X PART-VI

BHIDEGHARKUL TO NALLA

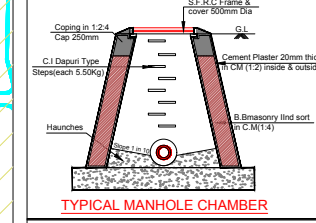
FLOW TO ZONE-X PART-VII AT MH-2104

PIPE DETAILS:-

Sr. No.	DIAMETER	COLOUR CODE
1	150mmØ	Red
2	170mmØ	Orange
3	200mmØ	Yellow
4	250mmØ	Green
5	300mmØ	Blue
6	350mmØ	Purple
7	400mmØ	Cyan

LEGEND:-

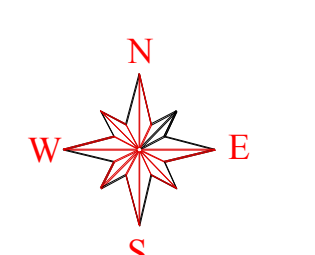
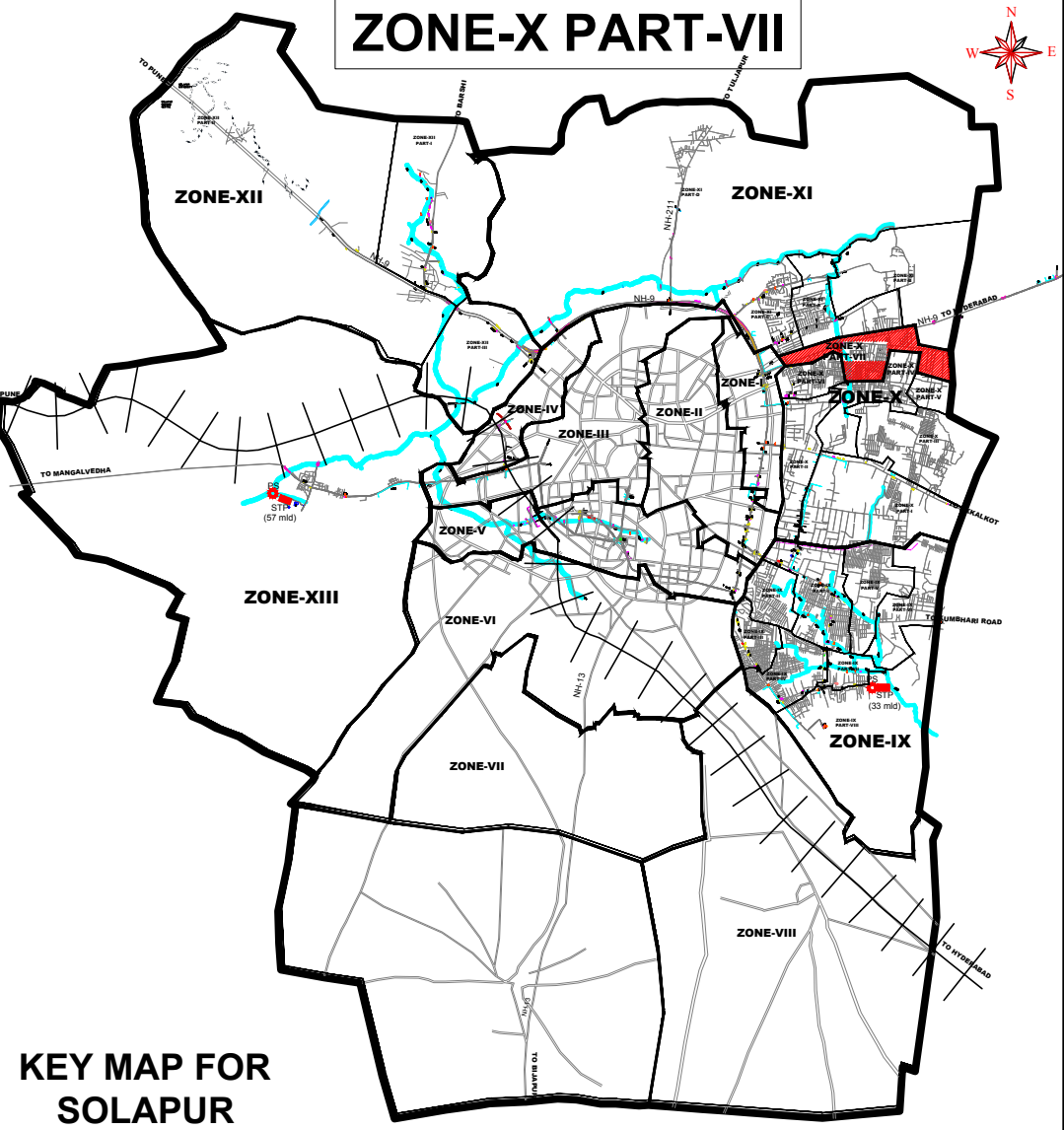
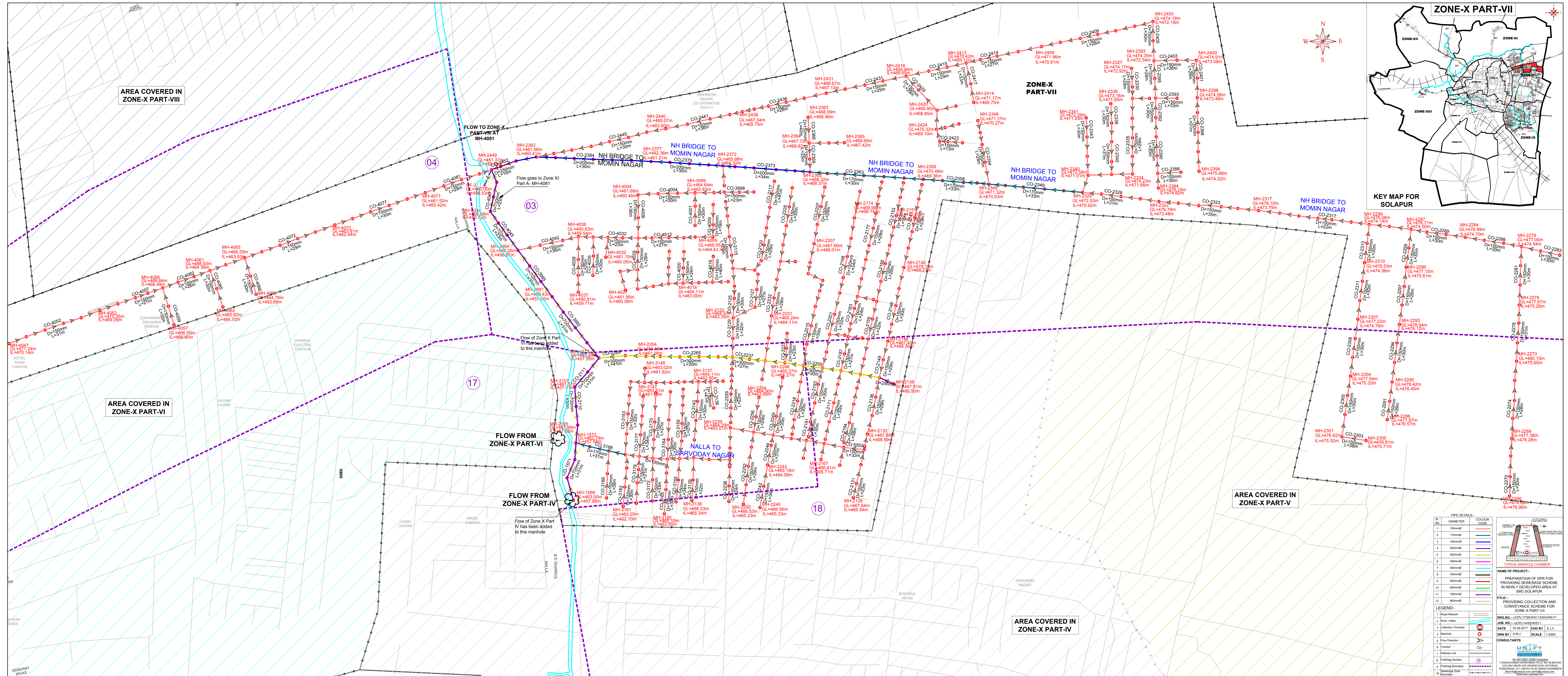
1	Road Network	—
2	River / Nalla	—
3	Collection Chamber	CC
4	Manhole	MH
5	Flow Direction	→
6	Conduit	Co-
7	Railway Line	
8	Prabhad Number	(17)
9	Prabhad Boundary	---
10	Sewerage Zone Boundary	---



NAME OF PROJECT:-
PREPARATION OF DPR FOR PROVIDING SEWERAGE SCHEME IN NEWLY DEVELOPED AREA AT SMC-SOLAPUR

TITLE:- PROVIDING COLLECTION AND CONVEYANCE SCHEME FOR ZONE-X PART-VI
DRG. NO.:- UCPL/17/SEW/511/DWGR/5/16
JOB. NO.:- UCPL/14/SEW/511
DATE: 03.06.2017 **CHD BY:** S.J.Y.
DRN BY: A.S.K. **SCALE:** 1:2000
CONSULTANTS:

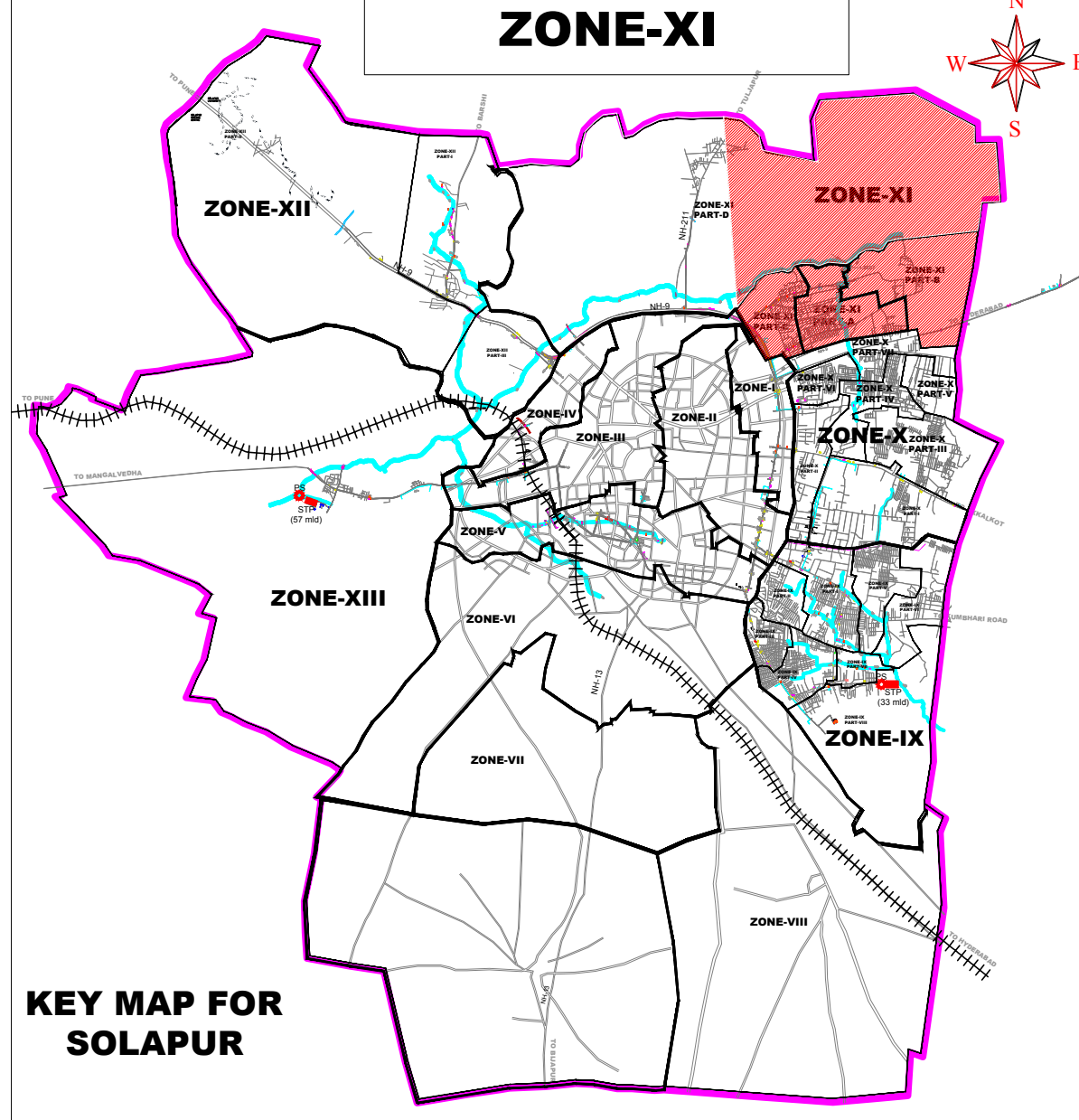
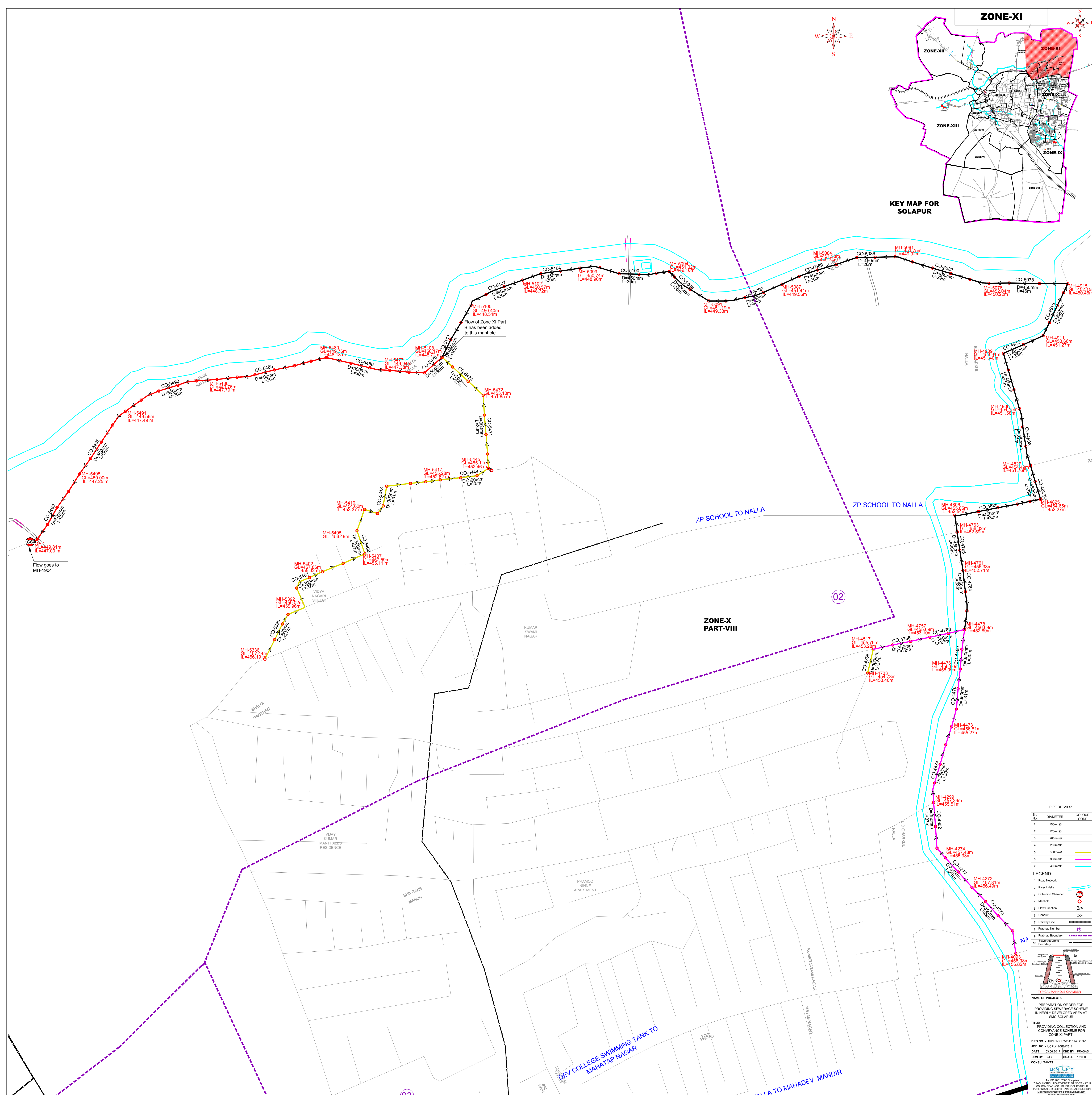




Sl. No.	PIPE DIAMETER	COLOR CODE
1	150mm	Blue
2	175mm	Green
3	200mm	Yellow
4	225mm	Orange
5	250mm	Red
6	300mm	Purple
7	400mm	Light Blue
8	450mm	Light Green
9	500mm	Light Yellow
10	600mm	Light Orange
11	700mm	Light Red
12	800mm	Light Purple

LEGEND:
1. Inflow Manhole
2. Sewer Nala
3. Collection Chamber
4. Manhole
5. Flow Direction
6. Sewer
7. Rainfall Line
8. Plotting Number
9. Planning Boundary
10. Surveying Zone
11. Boundary

PREPARATION OF DPR FOR
 PROVIDING SEWERAGE SCHEME
 IN NEWLY DEVELOPED AREA AT
 SMC-SOLAPUR
 TITLE: PROVIDING COLLECTION AND
 CONVEYANCE SCHEME FOR
 ZONE-X PART-VI
 JOB NO.: LUP/17/2017/10/MSR/17
 DATE: 03.06.2017
 DRAWN BY: A.M.Z.
 CHECKED BY: S.S.V.
 SCALE: 1:2000
 CONSULTANTS:



PIPE DETAILS:-

Sl. No.	DIAMETER	COLOR	CODE
1	150mmD		
2	175mmD		
3	200mmD		
4	225mmD		
5	300mmD		
6	350mmD		
7	400mmD		

LEGEND:-

- 1 Road Network
- 2 Sewer Network
- 3 Catchment Boundary
- 4 Manhole
- 5 Flow Direction
- 6 Sewer Line
- 7 Railway Line
- 8 Plotting Number
- 9 Plotting Boundary
- 10 Sewerage Zone Boundary

TYPICAL MANHOLE CHAMBERS

NAME OF PROJECT:- PREPARATION OF SPS FOR PROVIDING SEWERAGE SCHEME IN NEWLY DEVELOPING AREA AT SMC-SOLAPUR

TITLE:- PROVIDING COLLECTION AND CONVEYANCE SCHEME FOR ZONE-XI PART VIII

JOB NO.:- SMC/PL/TS/SPS/11/06/2017

DATE: 13/06/2017 **DRN BY:** PRAKASH

DRN BY: S.J.Y. **SCALE:** 1:2000

CONSULTANTS:

UNITARY

PROJECT ADDRESS: SMC-SOLAPUR

PROJECT NO.: SMC/PL/TS/SPS/11/06/2017

PROJECT LOCATION: NEWLY DEVELOPING AREA AT SMC-SOLAPUR

PROJECT AREA: 11.50 Ha

PROJECT PERIOD: 12 Months

PROJECT BUDGET: Rs. 1000.00 Lakhs

PROJECT STATUS: Ongoing

PROJECT MANAGER: Mr. P. S. Jadhav

PROJECT ENGINEER: Mr. S. J. Yedekar

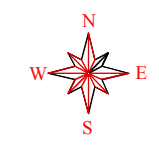
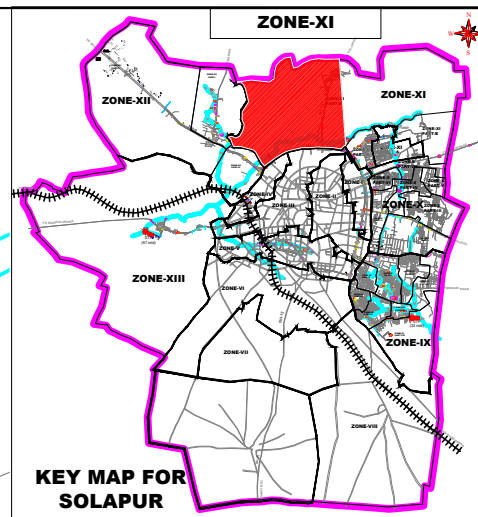
PROJECT SUPERVISOR: Mr. M. S. Patil

PROJECT ASSISTANT: Mr. A. S. Patil

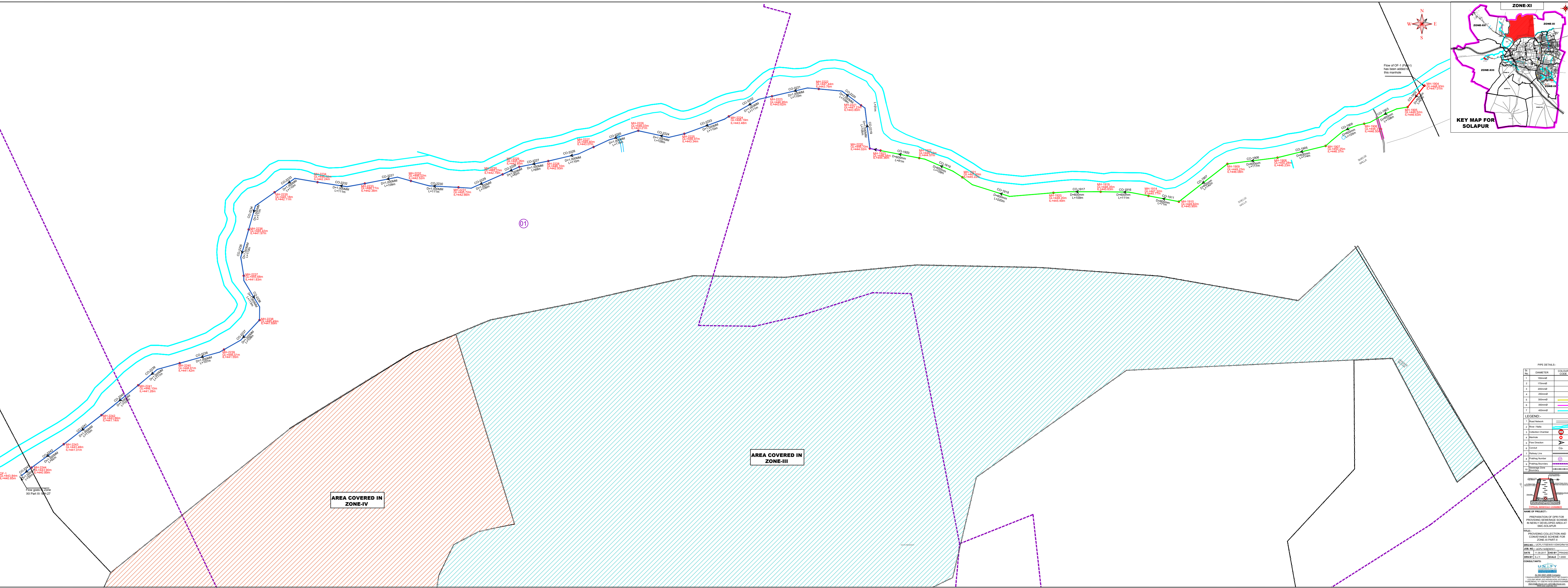
PROJECT OFFICE: SMC-SOLAPUR

PROJECT CONTACT NO.: 020-26111111

PROJECT WEBSITE: www.smc-solapur.com



Flow of CP-1 (PVC) has been shown in the main map



PIPE DETAILS:

Sl. No.	DIAMETER	COLOR CODE
1	150mm	
2	150mm	
3	150mm	
4	150mm	
5	150mm	
6	150mm	
7	150mm	

LEGEND:

- 1. Sewerage Line
- 2. Manhole
- 3. Catchpit
- 4. Valve
- 5. Fire Hydrant
- 6. Fire Station
- 7. Fire Alarm
- 8. Fire Alarm
- 9. Fire Alarm
- 10. Fire Alarm

NAME OF PROJECT: PROPOSED COLLECTION AND TREATMENT PLANT FOR SEWERAGE IN ZONE-III AND ZONE-IV, SOLAPUR.

DATE: 15/08/2023

SCALE: 1:1000

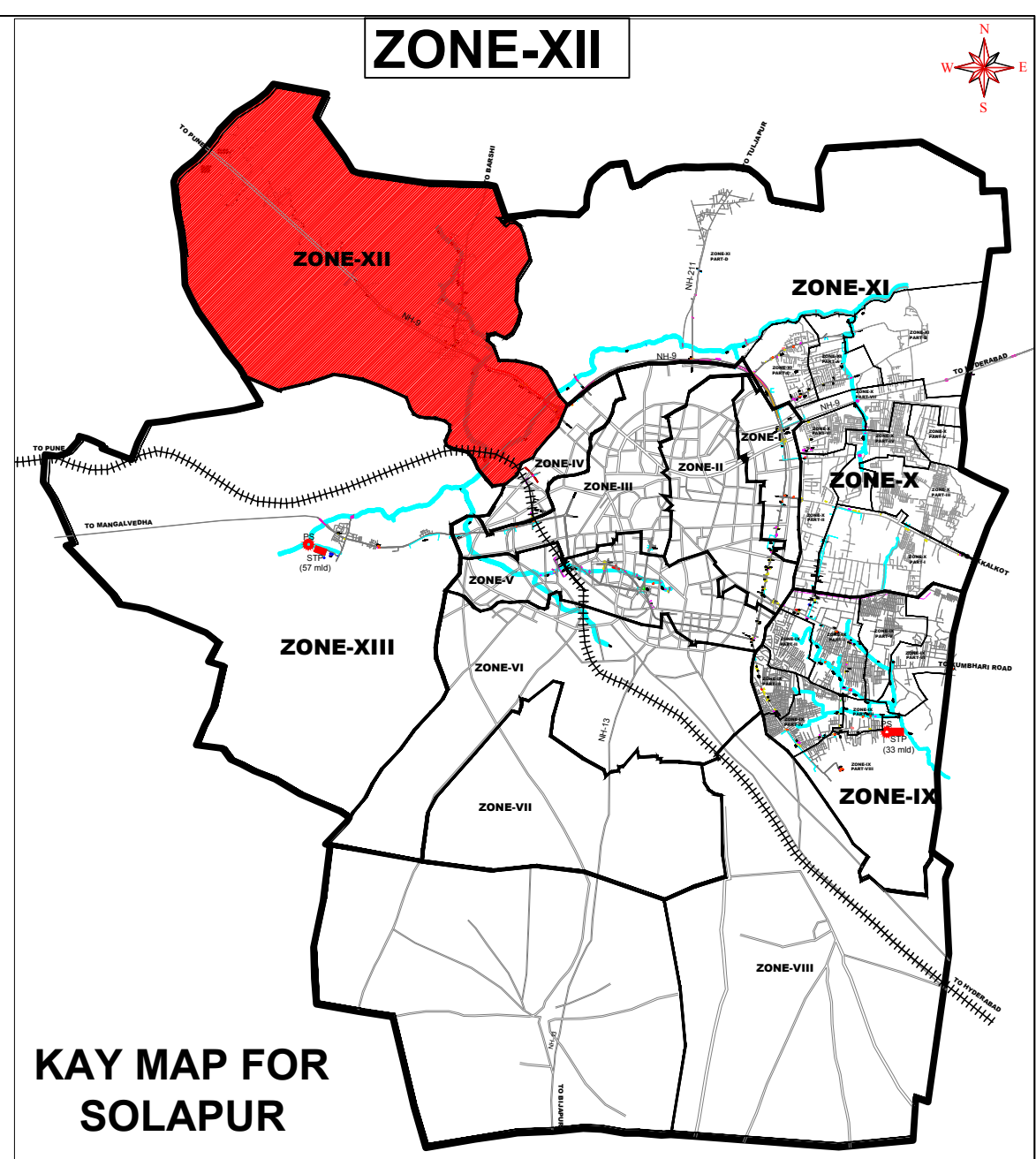
CONTRACT NO: 15/08/2023

CONTRACT VALUE: 15/08/2023

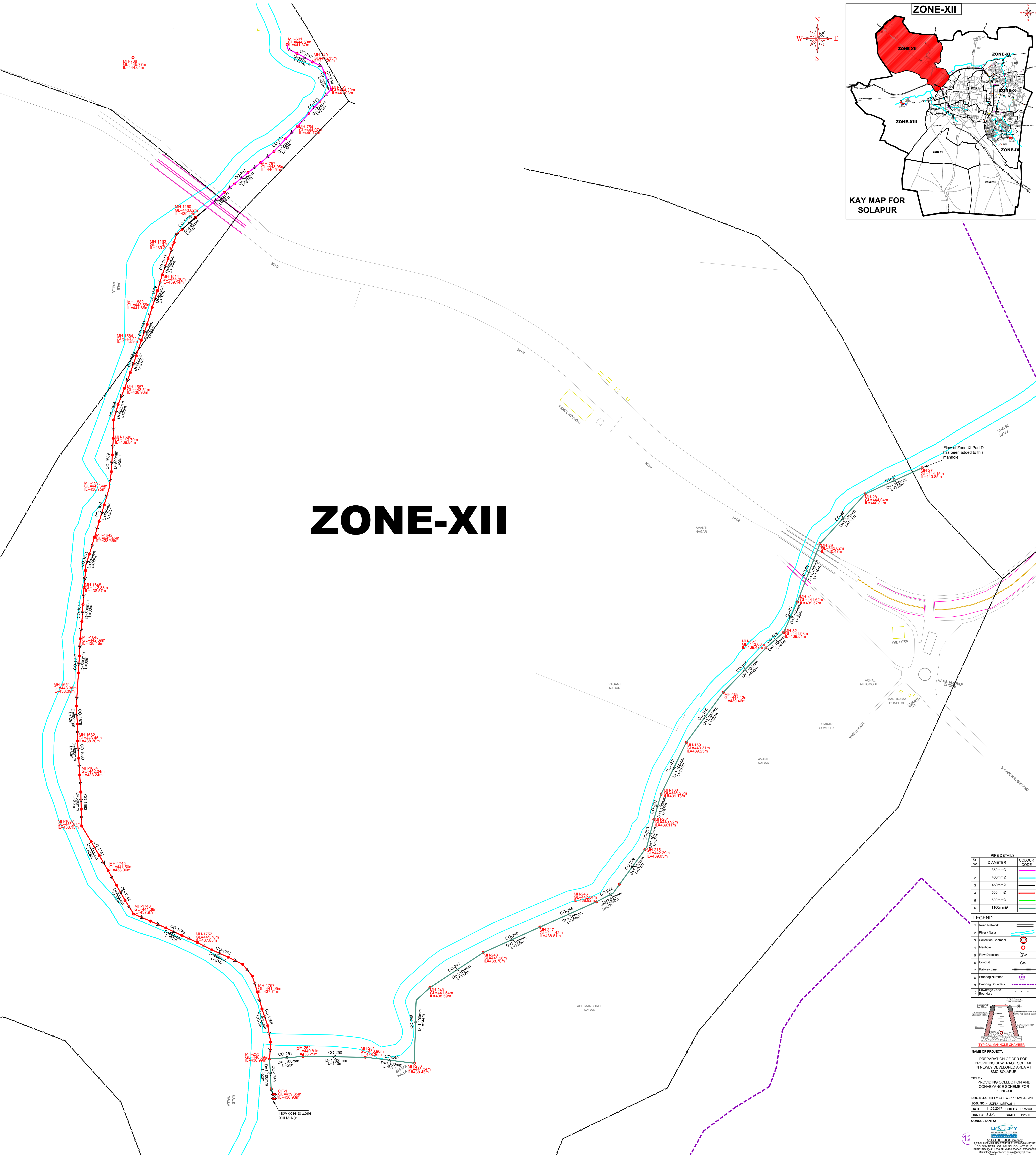
AREA COVERED IN ZONE-IV

AREA COVERED IN ZONE-III

01



ZONE-XII



PIPE DETAILS:		
Sr. No.	DIAMETER	COLOR CODE
1	300mmØ	Red
2	400mmØ	Orange
3	500mmØ	Yellow
4	600mmØ	Green
5	1100mmØ	Blue

LEGEND:	
1	Road Network
2	River / Nala
3	Collection Chamber
4	Manhole
5	Flow Direction
6	Conduit
7	Railway Line
8	Plotting Number
9	Plotting Boundary
10	Boundary

NAME OF PROJECT:	
DRS NO.	UCPL/17/SEW/5110/W/RS/20
JOB NO.	UCPL/18/RS/5111
DATE	11/09/2017
DRN BY	S.J.Y.
SCALE	1:2500