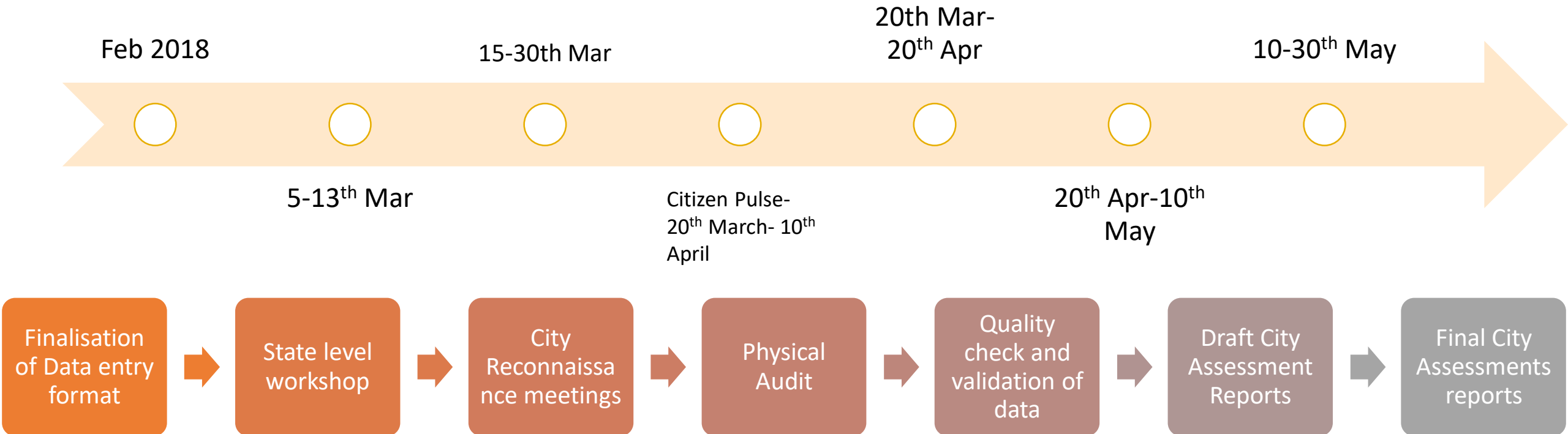


Session 4

Workshop Schedules, Key Milestones and Co-ordination Protocols

Overall Timeline





Workshop objectives

1. To familiarise on the liveability assessment- overall programme, process for data collection, and timelines
2. To review the questionnaire completion status, address questions, discuss gaps, and data inconsistencies
3. To introduce the online data entry interface
4. To finalise timelines for city reconnaissance meetings and audit schedule

Number of Participants

~ 40-50

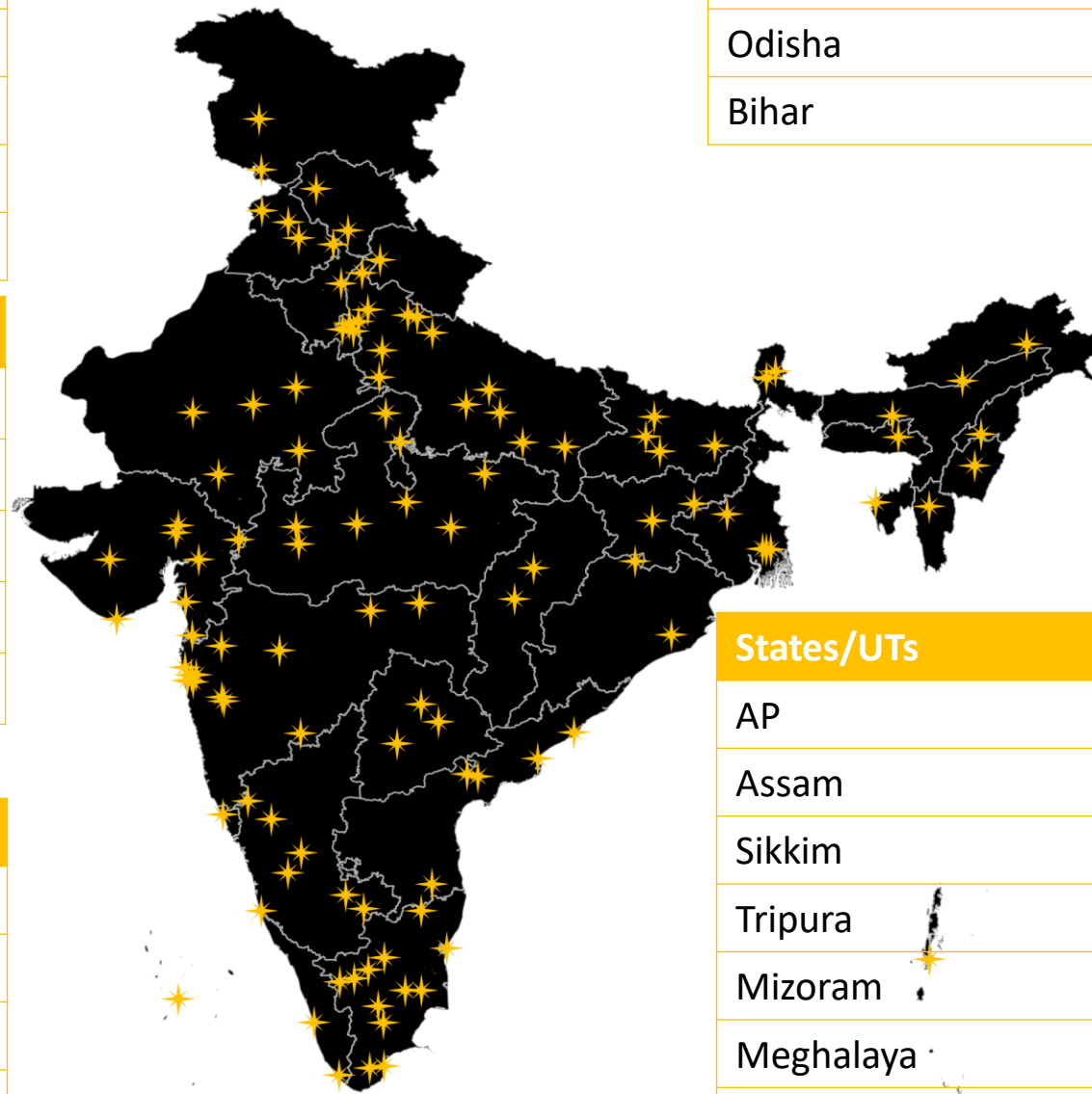
Target Participants

Commissioner, City representatives of concerned State Departments, parastatals, City SPV representative (if different from ULB Head), Utilities, GOI representatives

States/UTs	Dates
Punjab& Chandigarh	5-6 th March
Haryana & NCT	5-6 th March
HP	7-8 th March
J&K	7-8 th March
UP	7-8 th March
UK	9-10 th March

States/UTs	Dates
MP	5-6 th March
CG	7-8 th March
Rajasthan	9-10 th March
GT, D&D, D&N	12-13 th March
MH & Goa	9-10 th March

States/UTs	Dates
TN, PD, A&N Island	5-6 th March
KL & Lakshadweep	5-6 th March
Karnataka	7-8 th March
AP	7-8 th March
Telangana	9-10 th March



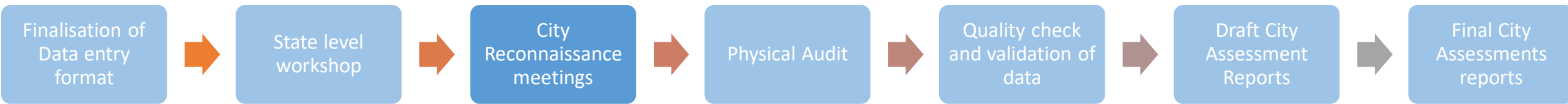
States/UTs	Dates
WB	7-8 th March
JK	7-8 th March
Odisha	7-8 th March
Bihar	9-10 th March

States/UTs	Dates
AP	5-6 th March
Assam	5-6 th March
Sikkim	7-8 th March
Tripura	7-8 th March
Mizoram	12-13 th March
Meghalaya	12-13 th March
Manipur	9-10 th March
Nagaland	9-10 th March

Expected Outcomes



- At the end of state workshop we have:
 - a clear assessment of data availability -questionnaire format completed
 - Extent of gaps identified
 - Action plan to address the gaps
 - Agree on date for city reconnaissance meeting



- Preparatory activities by Cities
 - Review and complete readily available data on the data entry portal
 - Liaison with stakeholders at city level
 - Compile all secondary evidence, project reports, external consultants
 - Collect and compile the database required for physical audit
- Activities during city reconnaissance
 - Consultations to review filled in data
 - Collecting secondary data from various stakeholders, different departments
 - Meeting with department heads/representatives for data
 - Validation of data submitted by cities eg. List of schools with digital education, integrated command centre, signal synchronization
 - Physical audits of select indicators- eg. Ecologically important areas restoration through projects, provision of formal spaces to vendors,

Stakeholders

- Town Country Planning Department
- City Development Authority
- DISCOM Electricity Board
- Central Pollution Control Board
- Commercial Taxes Department
- State Education Department
- Police Authority
- Railways
- State Health Department
- State Disaster Management Authority
- State IT Department
- State Renewable Energy Authority
- State Transport Authority
- ULB



Outcomes

- All available data collected
- Necessary validation done
- Data gaps identified
- Sample frame for physical audits
- Audit protocols explained



Citizen Pulse

- **Objective**-to understand and capture citizens perceptions of liveability
- **Methodology**- a dipstick study covering **600 HH interviews per city (Total N= 69600)** covering sample across different citizen groups by demographic variables- male, female, socio economic status, and vulnerable groups in the community
- **Outcome**- Liveability index based on citizen perceptions to be compared with indicator based ranking





1.2 Percentage of services integrated through Command Centre (S)

4.3 Average response time in case of health emergencies (S)

11.7 Availability of Passenger Information System (S)

11.8 Extent of signal synchronization (S)

2.2 Percentage of ecologically important areas covered through projects for restoration (C)

5.1 Number of streets, public places, junctions covered through surveillance systems (C)

11.9 Availability of paid parking spaces (C)

11.10 Percentage coverage of footpaths – wider than 1.2 m (C)

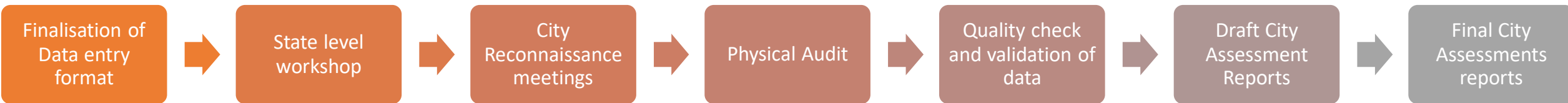
2.3 Hotel Occupancy (C)

6.5 Percentage of vendors registered and provided formal spaces (S)

11.11 Percentage coverage of footpaths – wider than 1.2 m (S)

11.12 Percentage coverage of footpaths – wider than 1.2 m (S)

Indicator	Audit Unit	Process
1.2 Percentage of services integrated through Command Centre (S)	Command Centres	Interview & observation checklist
2.1 Percentage of ecologically important areas covered through projects for restoration (C)	Sites restored through projects	Observation
2.3 Hotel Occupancy (C)	Hotels of all categories	Interview & review of record
4.3 Average response time in case of health emergencies	Hospitals	Interview and review of record
5.1 Number of streets, public places, junctions covered through surveillance systems	Streets and Surveillance Centres	Observations
6.5 Percentage of vendors registered and provided formal spaces	Vendors	Observation
11.7 Availability of Passenger Information System	Bus stops/ Suburban Stations/ metro stations	Observation
11.8 Extent of signal synchronisation	Signalised intersections in the cities	Observation
11.9 Availability of paid parking spaces	Paid parking spaces along arterial and sub arterial roads	Observation
11.10 Percentage coverage of footpaths – wider than 1.2m	Footpaths	Observation
11.11 Percentage of traffic intersections with pedestrian crossing facilities	Subway/ FOB	Observation
11.12 Extent to which universal accessibility is incorporated in public rights-of-way	Government buildings, malls, subways, FOBs	Observation



12.3 Quality of water supplied (C)

13.3 Collection efficiency of sewerage network (C)

14.1 Household level coverage of municipal solid waste collection (C)

13.4 Extent of reuse and recycling of waste water (C)

14.3 Extent of municipal solid waste recovered through reuse (C)

14.2 Efficiency of collection of municipal solid waste (C)

Indicator	Audit Unit	Process
12.3 Quality of water supplied	Representative set of Random locations	Review of test result records
13.3 Collection efficiency of sewerage network		Sanitary inspector logbook/ STP logbook/ SLIPS
13.4 Extent of reuse and recycling of waste water		Sanitary inspector logbook/ STP logbook/ SLIPS
14.1 Household level coverage of municipal solid waste collection	HH	Vehicle logbook/ trip sheets/ sanitary inspector logbook
14.2 Efficiency of collection of municipal solid waste		Weighbridge receipts/ sanitary inspector logbook
14.3 Extent of municipal solid waste recovered through reuse	Site visits to recovery centres	Weighbridge receipts/ sanitary inspector logbook

Data collection and physical audits

Secondary data collection

Sample design

Primary data collection

Physical/spatial audit

Coverage

Unit	Sample per city	No of cities	Total sample
HH survey/ Citizen (slum and non-slum)	600	116	69,600
Institutions- Hotels, Schools, Establishments	98	116	11,368
Physical validation through Observation	270	116	31,320
Total	968	116	1,12,288

Team 1

Team 2

Team 3



State/UT Coordinators

Responsible for secondary data collection, organising State/UT workshops and city reconnaissance meetings, follow-ups, help desk support, and local support to Team 2 and Team 3



Field Enumerators and Supervisors

Responsible for pilot testing, primary data collection for indicators identified under Category D and Category E



Physical Auditors

Responsible for physical inspection and verification of secondary data provided for indicators identified under Category C

All teams will be supported by a centralised quality control, IT and technical backstopping team

Technical Support and Coordination

- Facilitation of state workshops and city level meetings
- Designated State Coordinator for each state/UTs during the period of data entry and data collection
- Centralised Help desk for any questions related to indicators
- Online Progress tracking of submission on <https://smartnet.niua.org/liveability>
- Sharing draft city assessment reports for review and feedback



Thank you

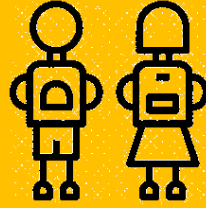




INDICATOR CATEGORY:
GOVERNANCE



INDICATOR CATEGORY:
IDENTITY & CULTURE



INDICATOR CATEGORY:
EDUCATION



INDICATOR CATEGORY:
HEALTH



INDICATOR CATEGORY:
SECURITY & SAFETY



INDICATOR CATEGORY:
ECONOMY &
EMPLOYMENT



INDICATOR CATEGORY:
HOUSING &
INCLUSIVENESS



INDICATOR CATEGORY:
PUBLIC OPEN
SPACES



INDICATOR CATEGORY:
MIXED LAND USE &
COMPACTNESS



INDICATOR CATEGORY:
POWER SUPPLY



INDICATOR CATEGORY:
TRANSPORT &
MOBILITY



INDICATOR CATEGORY:
ASSURED WATER
SUPPLY



INDICATOR CATEGORY:
WASTE WATER
MANAGEMENT



INDICATOR CATEGORY:
SOLID WASTE
MANAGEMENT



INDICATOR CATEGORY:
REDUCED
POLLUTION