



# Liveability Standard\$ in Cities

Methodology for Collection and Computation



# Liveability framework covers all city typologies and provides for relative assessment



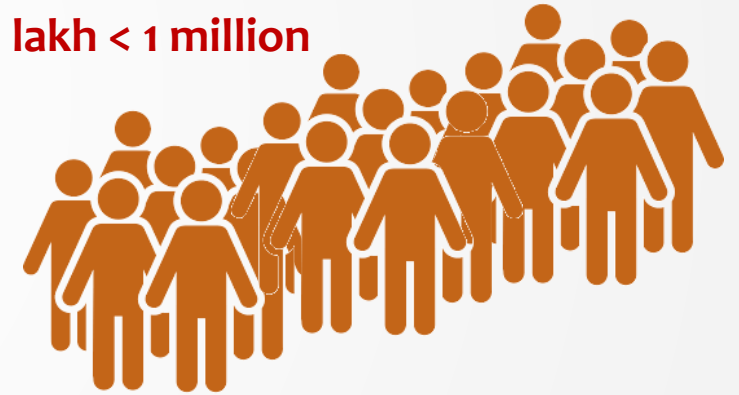
**Small towns**  
Less than 50,000  
population



**Medium towns**  
Population  $\geq 50,000 < 5$  lakh



**Large towns**  
Population  $\geq 5$  lakh  $< 1$  million



**Metropolitan cities**  
Population  $\geq 1$  million  $< 5$  million



**Megapolis**  
Population  $\geq 5$  million

Each city is assessed relative to its best performing peer(s).

4 Pillars

15 Categories

79 Indicators



WASTE WATER MANAGEMENT



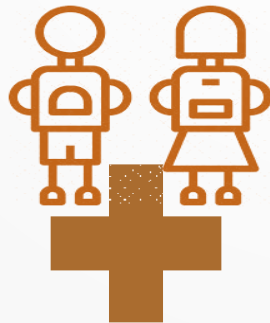
SOLID WASTE MANAGEMENT



REDUCED POLLUTION



INSTITUTIONAL



SOCIAL



ECONOMIC



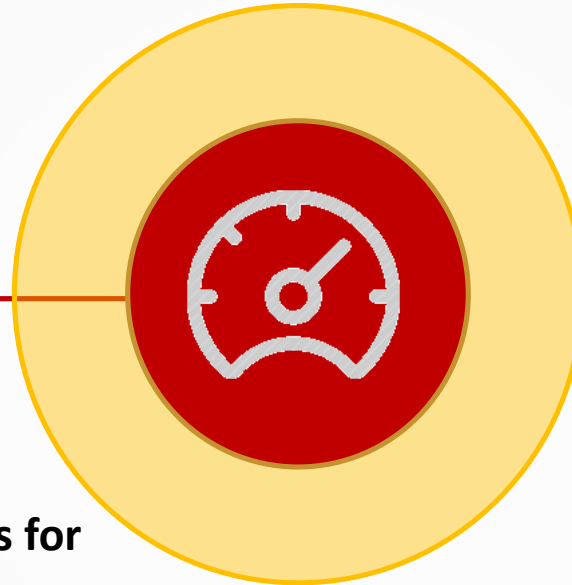
PHYSICAL

# 79 indicators comprise Core and Supporting indicators

E.g., Indicator 1.1  
*Percentage of citizen services available online*

**57**

CORE INDICATORS



E.g., Indicator 1.2  
Percentage of services integrated through Command Centre

**22**

SUPPORTING INDICATORS



Carry **70%** weights for computation

Carry **30%** weights for computation

Approach for Category Index Computation

=

(Average score for core indicators\* 0.7) + (Average score for supporting standards\* 0.3)

# Liveability Index lays greater emphasis on physical infrastructure of the cities!

## CITY LIVEABILITY INDEX

25% weightage

25% weightage

5% weightage

45% weightage

Housing & Inclusiveness Index (G)

Open space Index (H)

Mixed use and compactness Index (J)

Energy Index (K)

Mobility Index (L)

Water Index (M)

Waste Water Index (N)

Solid waste Index (P)

Pollution Index (Q)

Identity & Culture Index (B)

Education Index (C)

Health Index (D)

Safety & Security (E)

Economic Index (F)

Governance Index (A)

**INSTITUTIONAL**

**SOCIAL**

**ECONOMIC**

**PHYSICAL**

# Methodology for Index Computation

Pillar	Category Index	Average Value	Weight Adjustment	City Liveability Index
<b>INSTITUTIONAL</b> (25% weight)	Governance Index (A)	<b>A</b>	$T = A * 0.25$	<b>T</b>
<b>SOCIAL</b> (25% weight)	Identity & Culture Index (B), Education Index (C), Health Index (D), Safety & Security (E)	$R = B + C + D + E$	$U = R * 0.25$	<b>+</b> <b>U</b>
<b>ECONOMIC</b> (5% weight)	Economic Index (F)	<b>F</b>	$V = F * 0.05$	<b>+</b> <b>V</b>
<b>PHYSICAL</b> (45% weight)	Housing & Inclusiveness Index (G), Open space Index (H), Mixed use and compactness Index (J) Energy Index (K), Mobility Index (L), Water Index (M), Waste Water Index (N), Solid waste Index (P), Pollution Index (Q)	$S = G + H + J + K +$ $L + M + N + P + Q$	$W = S * 0.45$	<b>+</b> <b>W</b>

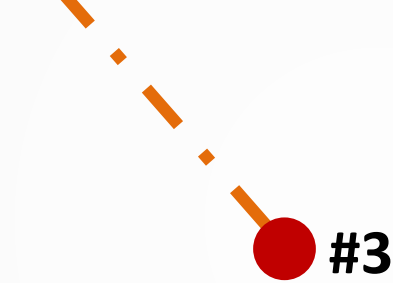
# Three-way data collection and validation strategy is proposed



Secondary data is provided  
by **data owners** –  
ULBs, Development  
Authorities, State Line  
Departments, Parastatals

#1

#2



#3



Dipsticks with citizens to  
gauge City Pulse on  
**LIVEABILITY**



Secondary and  
**primary** validation of  
data submitted by cities

*Only #1 and #2 will be  
considered for computation  
of the Index*

*#3 to serve as reference point  
for cities for further  
improvements*

# Approach for data validation



## Reference Indicator

**Indicator 5.1: Number of streets, public places and major traffic junctions covered through CCTV cameras**

**Data required:** No. of operational CCTV cameras installed



Secondary and **primary** validation of data submitted by cities

## Data reported by City

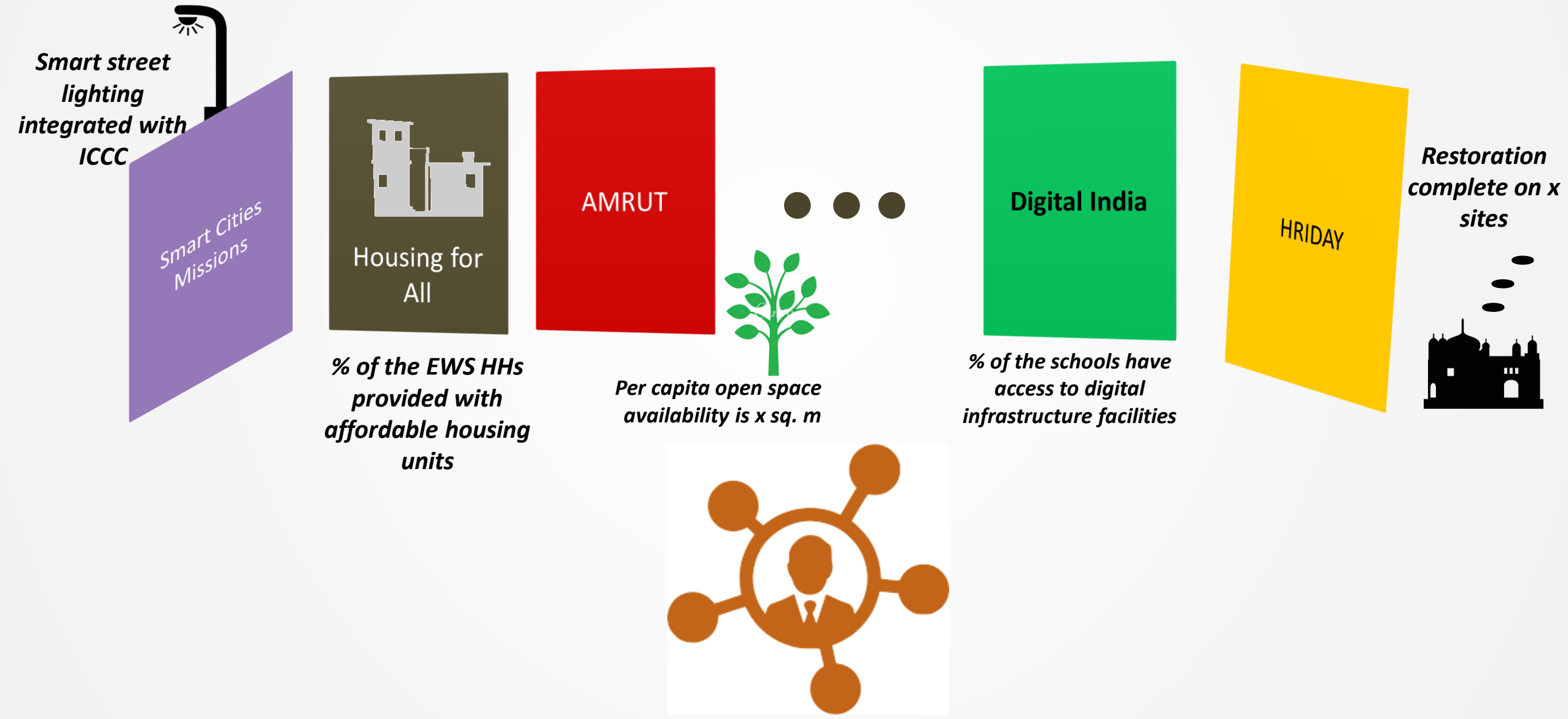
- Overall **1500** CCTV Cameras installed
- 1000** CCTV Cameras are reported to be operational!

## Validation approach

**Physical survey of say, 30 CCTV cameras selected randomly from list of 1000 operational CCTVs provided by city**



# It provides a comprehensive picture to city managers by consolidating various schemes, missions and programmes



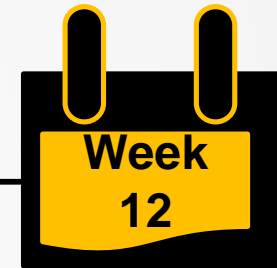
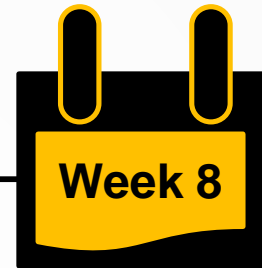
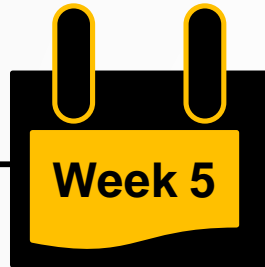
# Broad timelines for the next ten weeks...

**Feedback on  
Indicators and data  
sources**

**State/City level  
orientation**

**Secondary data  
submission**

**Liveability Index  
Computation**



**Its happening  
today!**

**Assessment of data  
availability, sources  
completed**

**Data Entry Portal  
goes Live!**

**Data submission  
complete**

**Data owners identified**

**Cities start filling  
secondary data**

**15 day window to revisit  
submitted data**

**Will feed into  
Indicator Finalisation**

**Will feed into City  
Inception Report**

**Real time progress  
monitoring and QC**

**Will feed into City  
Assessment Reports**