

## Placemaking Concepts for PSCDCL

Site- ABB\_1  
S.no 135 Baner, Pune

Presented to:  
Hon MC Mr. Kunal Kumar

Design Option: 01  
Revision: 0  
Date: 10 Oct 2016

## Place making design concept

### Keep it Simple yet Impactful

**Location** - **High Visibility**, Close vicinity from major transit routes & Social Infrastructure, Acquired Land

**User Profiling** – for **all age groups, common citizens**, underprivileged as well as people with special needs

**Design Mantra** - Humane Scale and **Dynamic multi-purpose use**. Cost effective and High recall value.

**Fast implementation** - **Quick transition** (within a week?) Use of prefabricated, precast, modular elements.

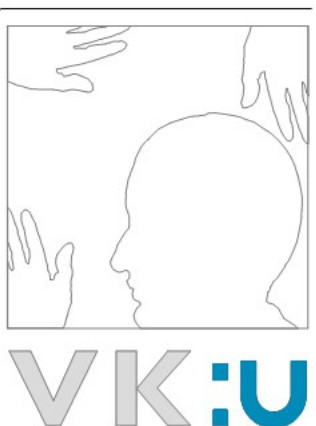
**Identity & Branding** - An attribute or Design element binding all the sites throughout diverse themes.

**Smart element** – **ICT integration allowing theme specific contents** and functional enhancement

**Sustainability** - Green features, **re-use material, local resources and low maintenance**

**Scope for Citizen engagement** - During execution stage.

**People's participation in managing Dynamic platforms** with programmatic Smart Pods.



# How will they use Pune Future Smart Places?

ABB-01  
S.NO 135, BANER, PUNE  
Theme: E-Learning

- How can Smart Public Places help people in their everyday-life activities?
- How will kids improve their education in a smart-connected environment?
- What elders may expect from a Smart Public Place designed accordingly to their needs?
- Can Smart Public Places reinforce Pune civic identity and community development?



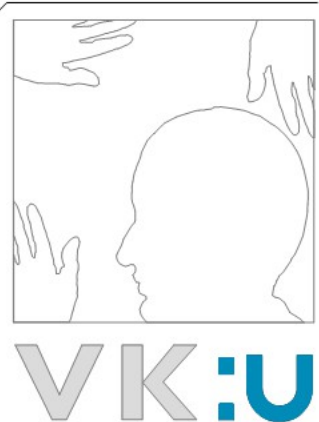
SMART CITY, PLACEMAKING

VK:U  
Urban

73/2 Bhakti Marg  
Off Law College Road  
Pune 411 004

t +91 20 66268888  
f +91 20 66268801

e mail@vkarch.com  
w www.vkarch.com



### **Catchment Profiling**

Cosmopolitan Visitors  
Young IT employees  
Baner High street Visitors

### **What is around?**

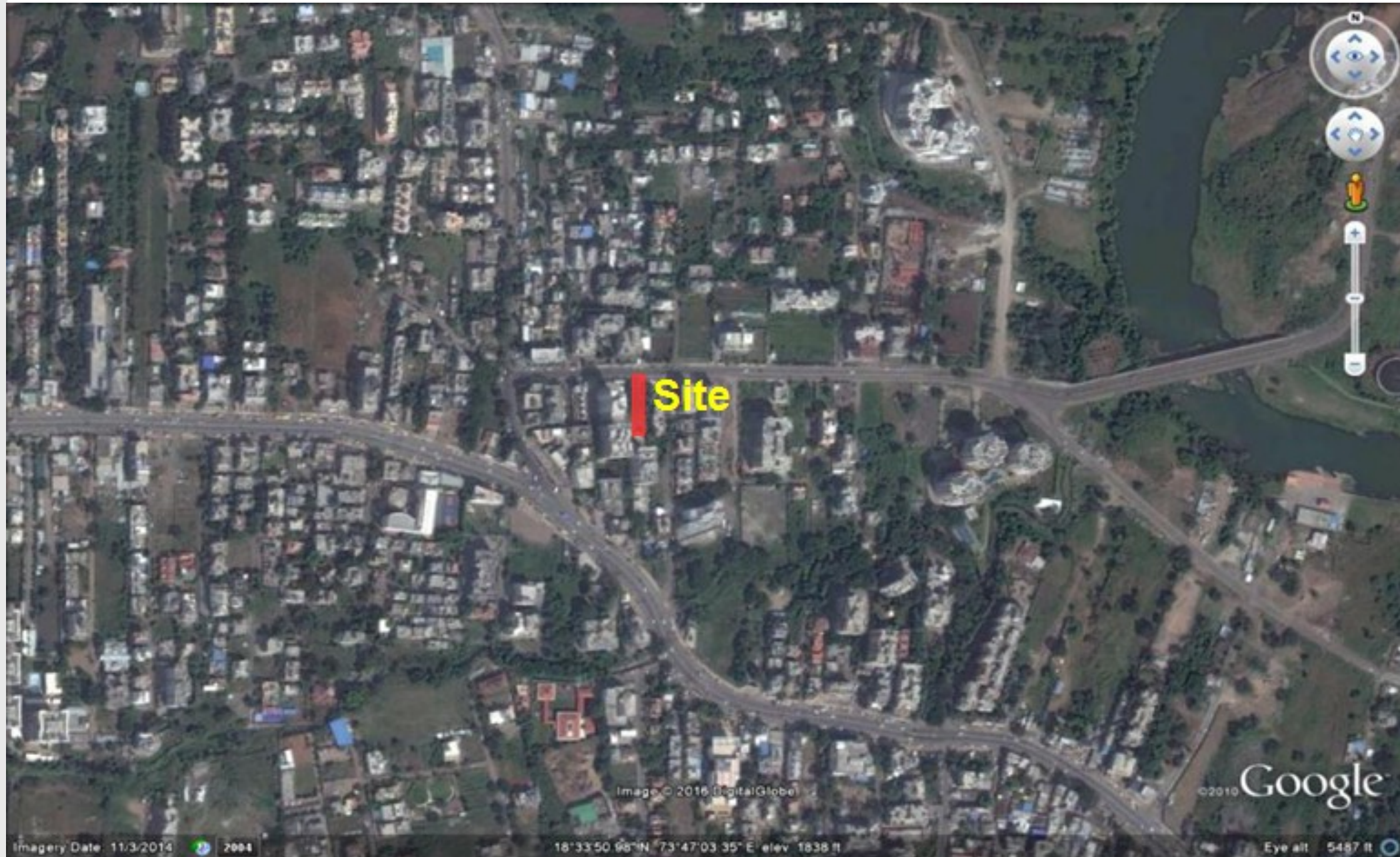
Residential area, Rental  
Housing, Commercial,  
Branded Shopping,  
Restaurants & Cafe's

### **Theme:**

Skill Development &  
Smart Labs

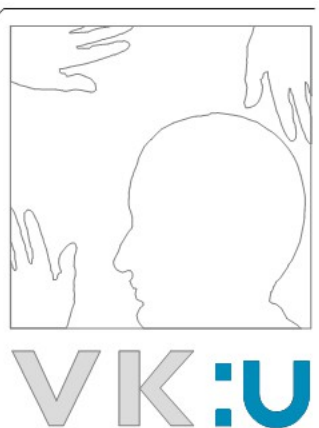
### **Status:**

Site Area - 1309 sq mt



### **Who are our neighbours?**

Access – 24 Mt wide DP connecting Baner highstreet road with Riverfront  
Close proximity landuse – Commercial and Mixed Use  
Transport – Close proximity to Important PMPML Root



## Theme – E-learning and skill development

ABB-01  
S.NO 135, BANER, PUNE  
Theme: E-Learning

The objective is to design a space for the youth willing to learn and develop technical skills.

This would create a platform providing basic infrastructure for the various software and other technical skill learning.

The site is located in proximity to the Balewadi phata which connects Baner and Balewadi gaothan. It is observed that the eateries/ restaurants and commercial places along Baner road are the socializing places for the young enthusiasts. Such social facilities are in ample, but there is lack of space for the enthusiasts to explore/ develop their skills in this neighbourhood.

This vibrant, well designed space supported by smart technology would be used by the young crowd residing , studying and working in Baner and Balewadi.

The space is designed to provide

- An interactive open space
- Novel and youthful design elements
- Smart technology
- Provision for smart labs and allied activities.

SMART CITY, PLACEMAKING

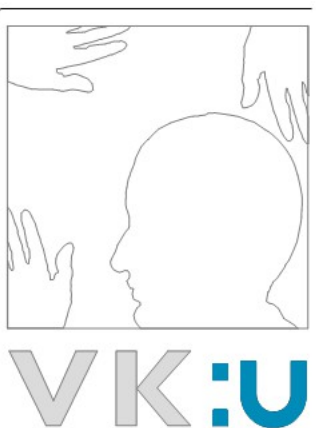
VK:U  
Urban

© VK:a architecture

73/2 Bhakti Marg  
Off Law College Road  
Pune 411 004

t +91 20 66268888  
f +91 20 66268801

e mail@vkarch.com  
w www.vkarch.com



# Smart Box Contents

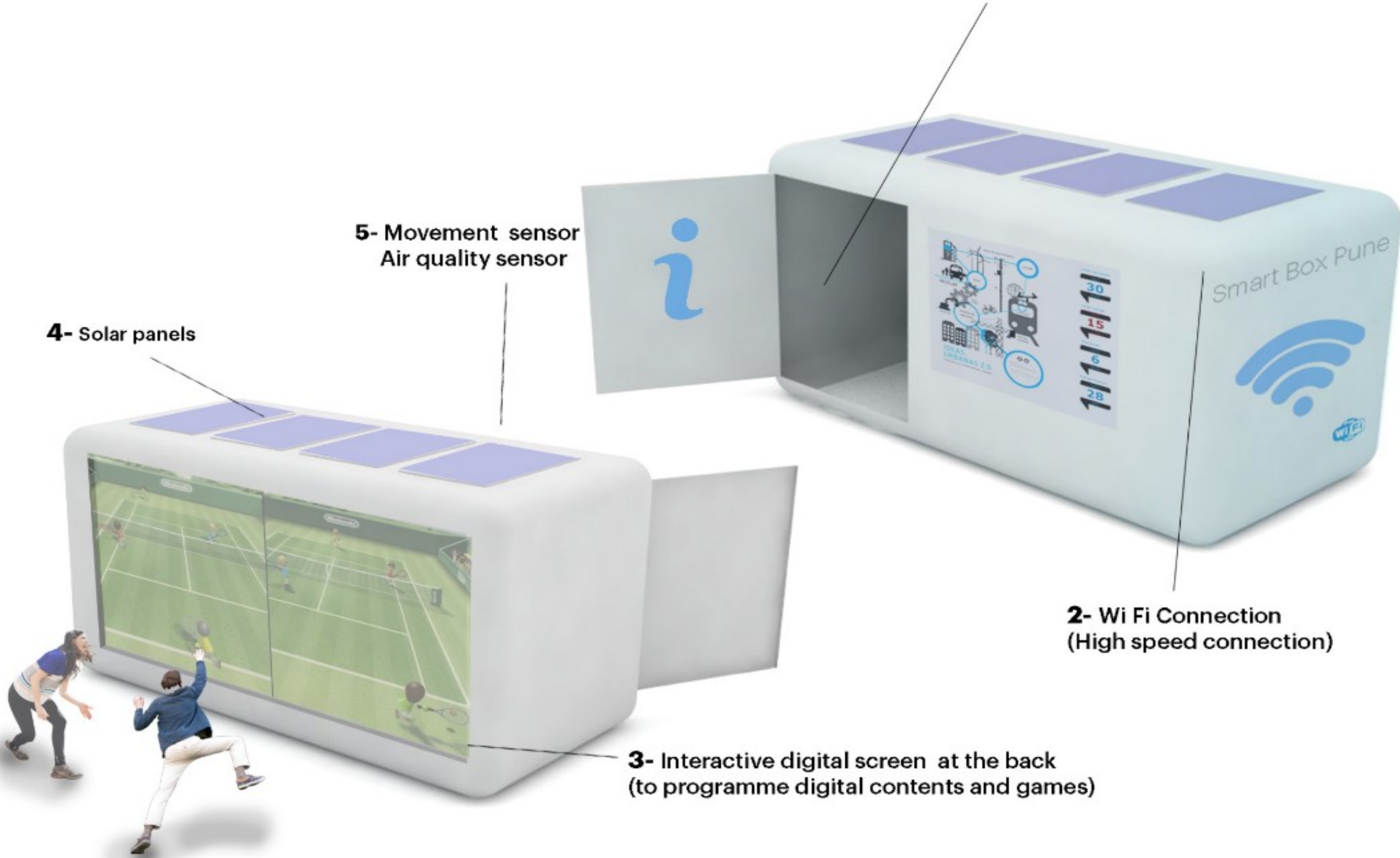
1- 3D digital printers (at least 1)

5- Movement sensor  
Air quality sensor

4- Solar panels

2- Wi Fi Connection  
(High speed connection)

3- Interactive digital screen at the back  
(to programme digital contents and games)



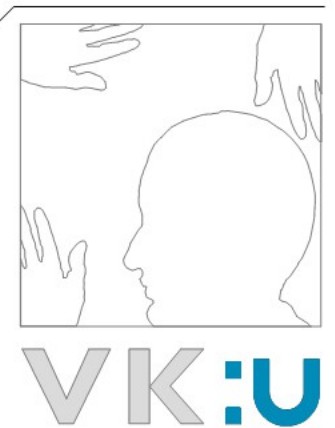
SMART CITY, PLACEMAKING

VK:U  
Urban

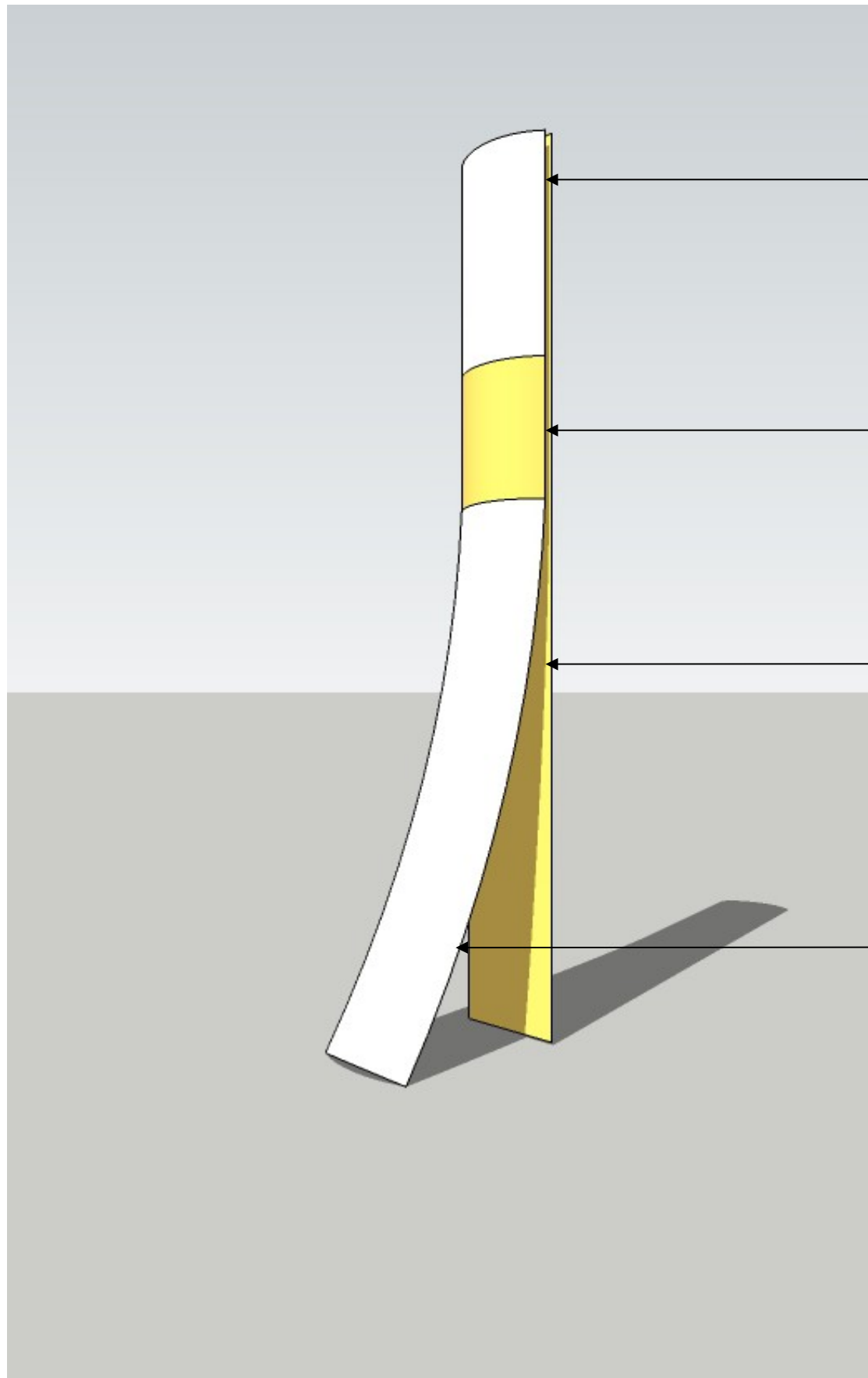
73/2 Bhakti Marg  
Off Law College Road  
Pune 411 004

t +91 20 66268888  
f +91 20 66268801

e mail@vkarch.com  
w www.vkarch.com



# SMART TOTEM

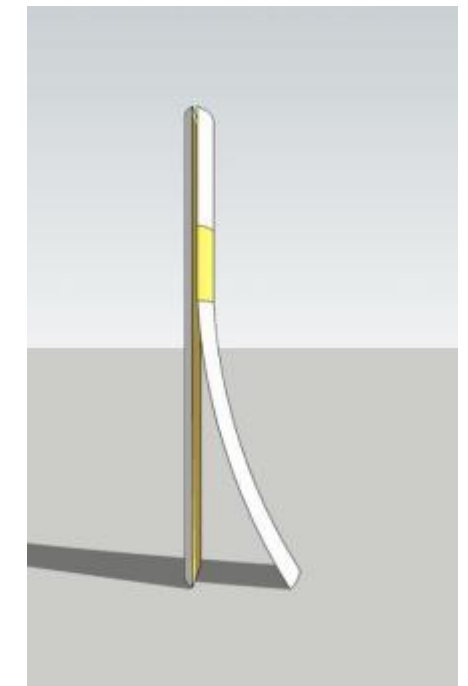
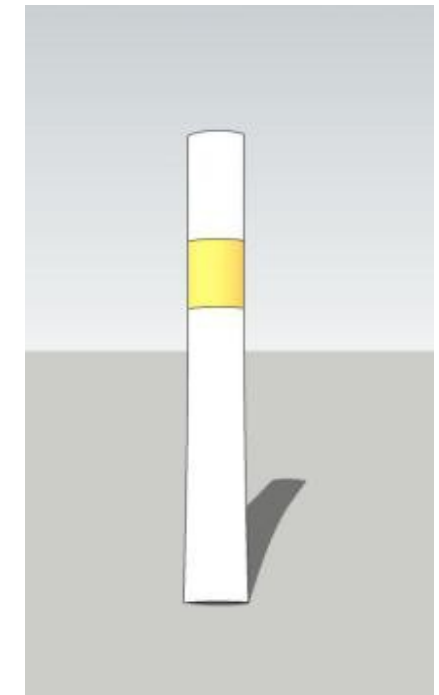


CCTV Surveillance to monitor the site for safety and security, Smart lighting, WiFi, Public Announcement System etc.

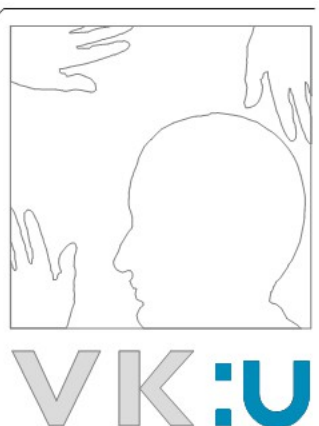
Branding Placement for PSCDCL & co-brands

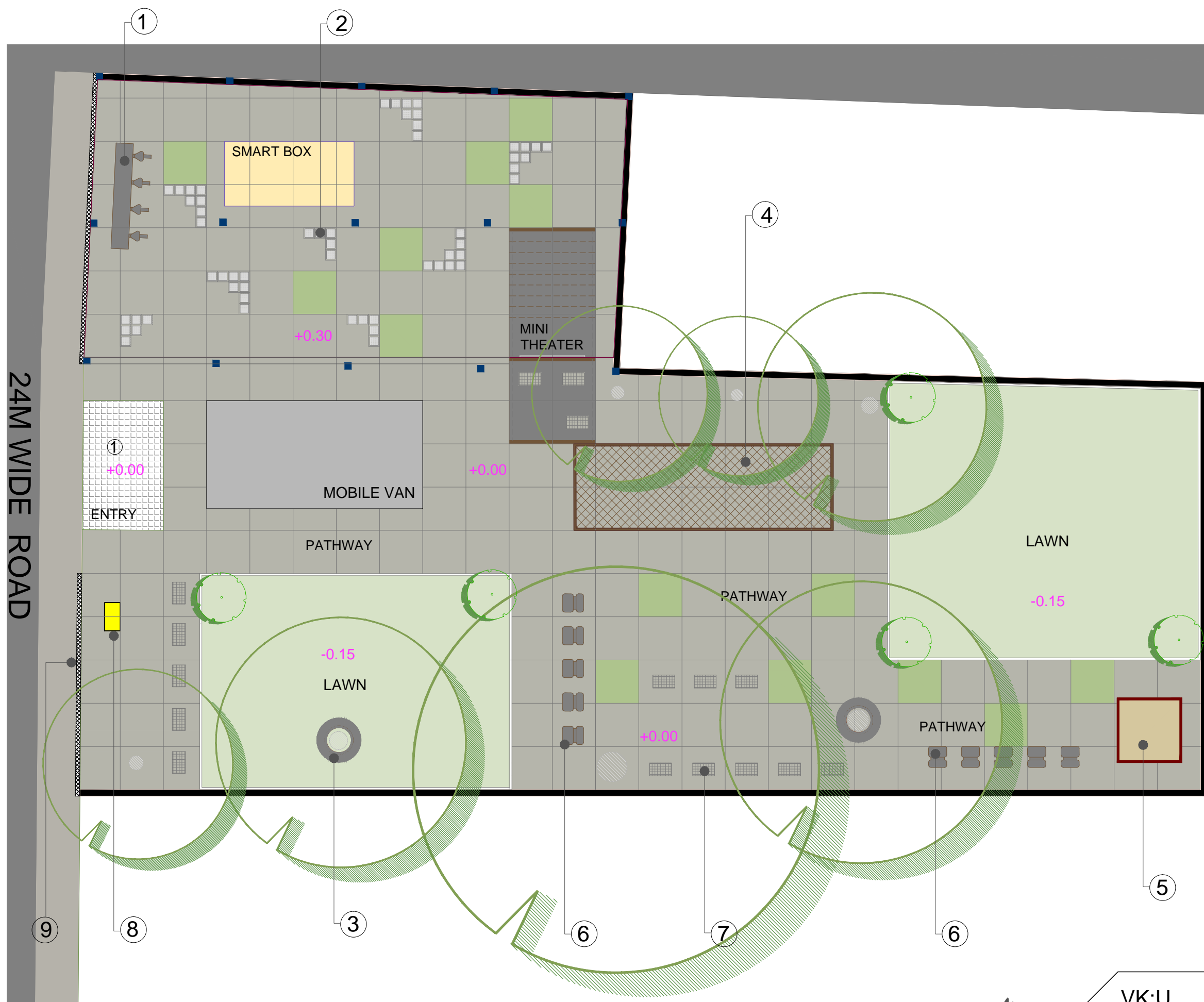
Color bands representing basic activity themes, bringing each theme its own identity.

Minimal design, that is unique yet common for all Smart City place making spots. Added to it, its height that helps identify the spot visually from a distance



## SMART CITY, PLACEMAKING





LOCATION

BANER, PUNE.



AREA OF PLOT 1309 SQ.MT.

TYPE OF PLOT AMENITY

LEGEND

- 1. CYCLE DESKS
- 2. WASTE BOX SEATING
- 3. TREE BENCHES SEATING
- 4. HAMMOCK
- 5. MODULAR LIBRARY
- 6. LAPTOP SEATING
- 7. JALI SEATING
- 8. TOTEM
- 9. CHAIN LINK FENCING

LEGEND

-  PROPOSED TREES
-  EXISTING TREES

Master Layout

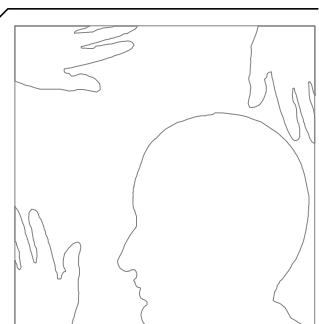


VK:U  
Urban

73/2 Bhakti Marg  
Off Law College Road  
Pune 411 004

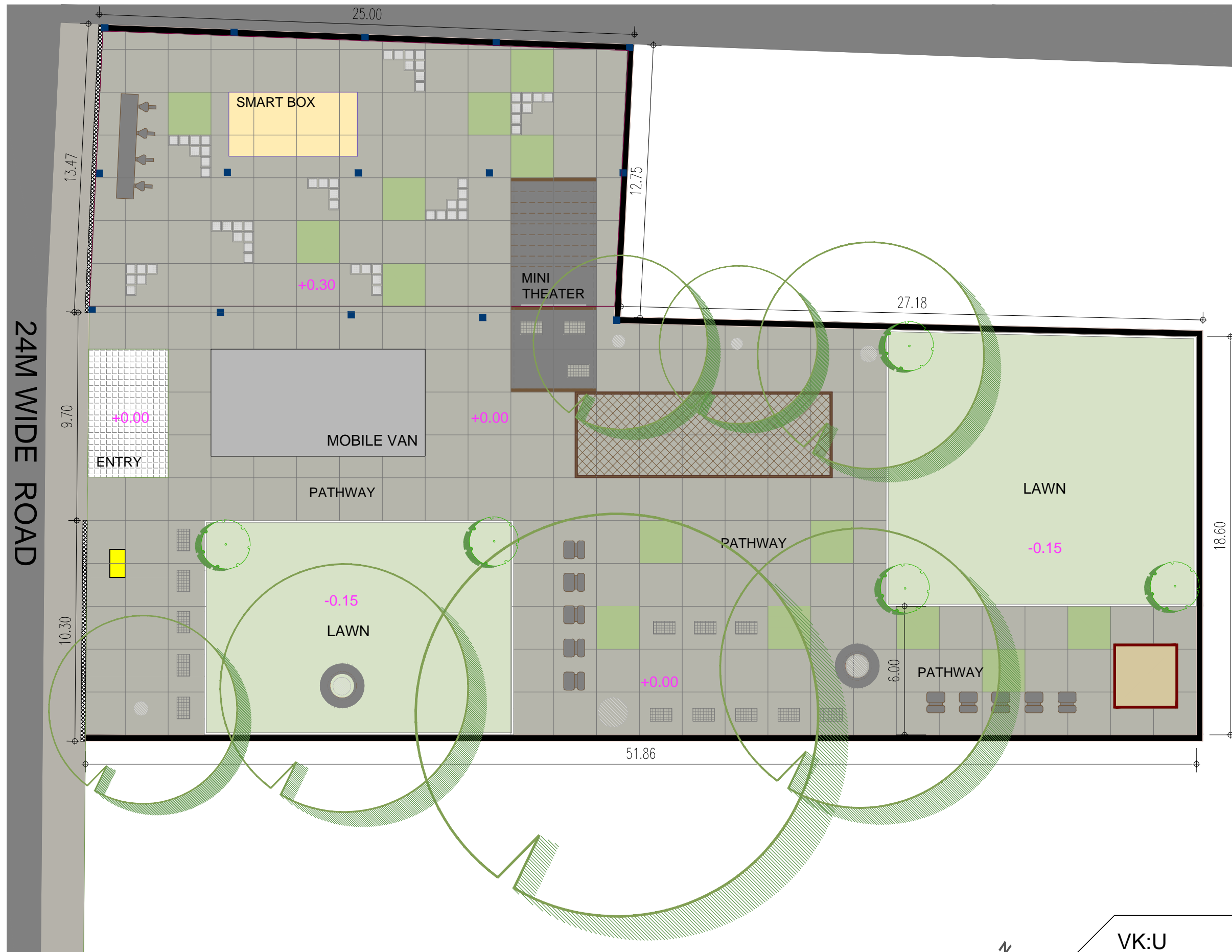
t +91 20 66268888  
f +91 20 66268801

e mail@vkarch.com  
w www.vkarch.com



VK:U

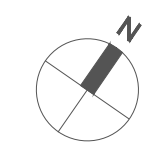




**SPECIFICATION**

<b>1. HARD SCAPE</b>	
ROUGH KOTA STONE Area:895sqm	
PAVED AREA	
<b>2. SOFT SCAPE</b>	
LAWN Area:350sqm	
<b>3. FURNITURE</b>	
i. LAPTOP SEATING	
ii. JALI SEATING	
iii. CIRCULAR BENCHES	
CYCLE DESKS	
MODULAR LIBRARY	
HAMMOCKS	
<b>4. CHAIN LINK &amp; FENCING</b>	

Specification Layout



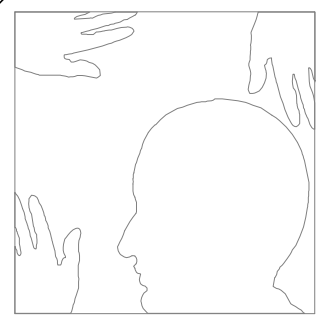
VK:U  
Urban

73/2 Bhakti Marg  
Off Law College Road  
Pune 411 004

t +91 20 66268888  
f +91 20 66268801

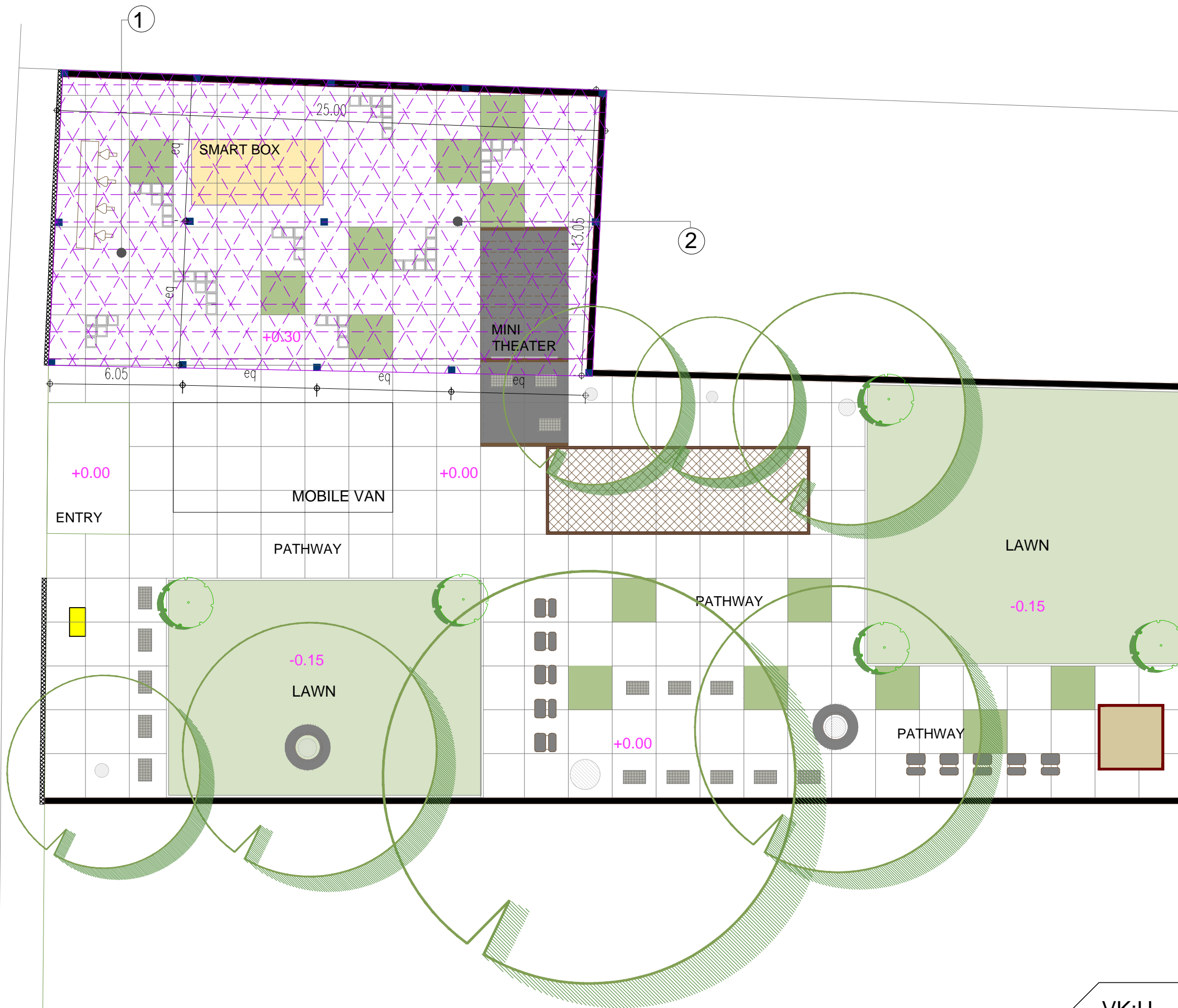
e mail@vkarch.com  
w www.vkarch.com

© VKa architecture



VK:U

24M WIDE ROAD



LOCATION

BANER, PUNE.

AREA OF PLOT 1309 SQ.MT.

TYPE OF PLOT AMENITY

LEGEND

- 1. TENSILE ROOFING
- 2. SUPPORTING MEMBERS

TENSILE  
 Area: 255sqm



Roofing Layout

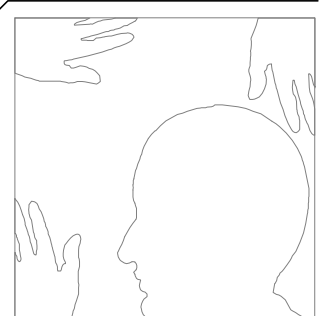


VK:U  
 Urban

73/2 Bhakti Marg  
 Off Law College Road  
 Pune 411 004

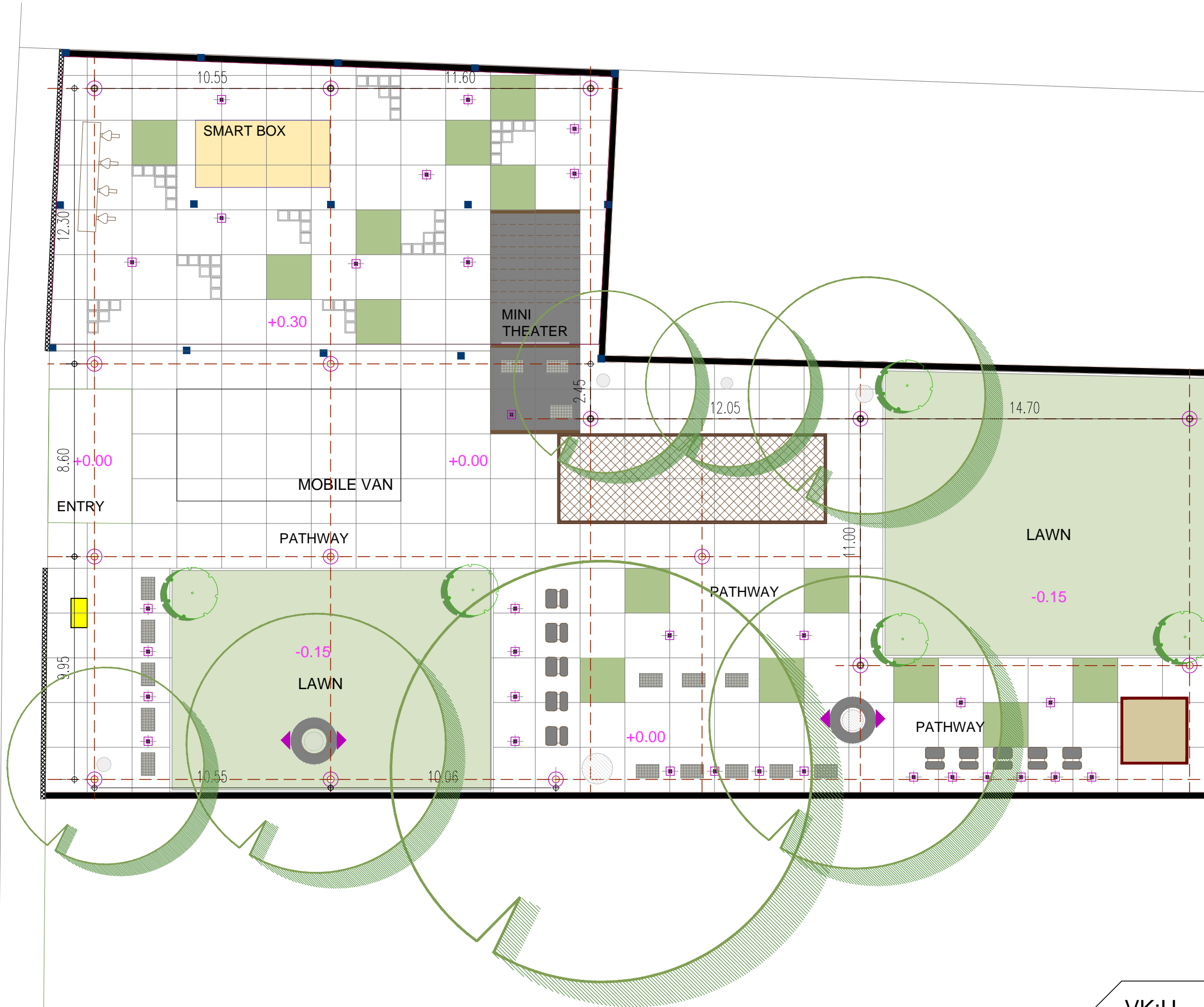
t +91 20 66268888  
 f +91 20 66268801

e mail@vkarch.com  
 w www.vkarch.com


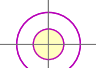
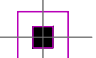


VK:U

24M WIDE ROAD



LEGEND

-  FOCUS LIGHTS- 4 NOS.
-  POLE LIGHTS- 15 NOS.
-  BOLLARDS- 32 NOS.

Electrical Layout

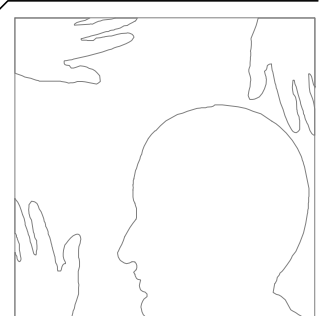


VK:U  
 Urban

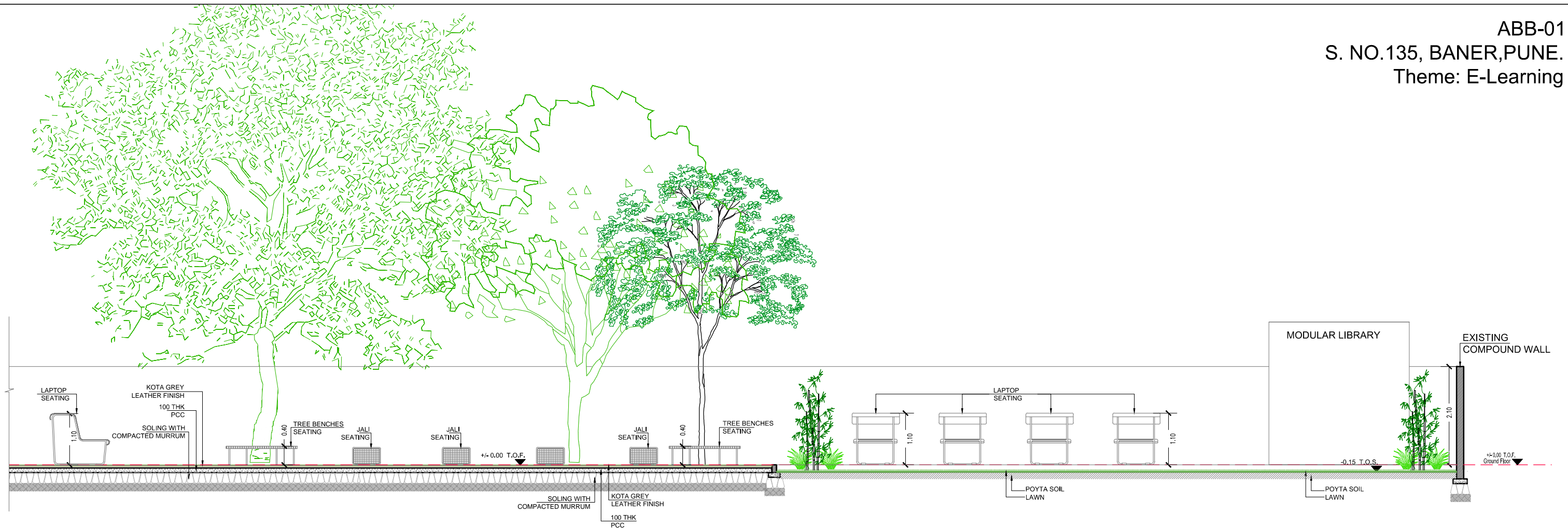
73/2 Bhakti Marg  
 Off Law College Road  
 Pune 411 004

t +91 20 66268888  
 f +91 20 66268801

e mail@vkarch.com  
 w www.vkarch.com



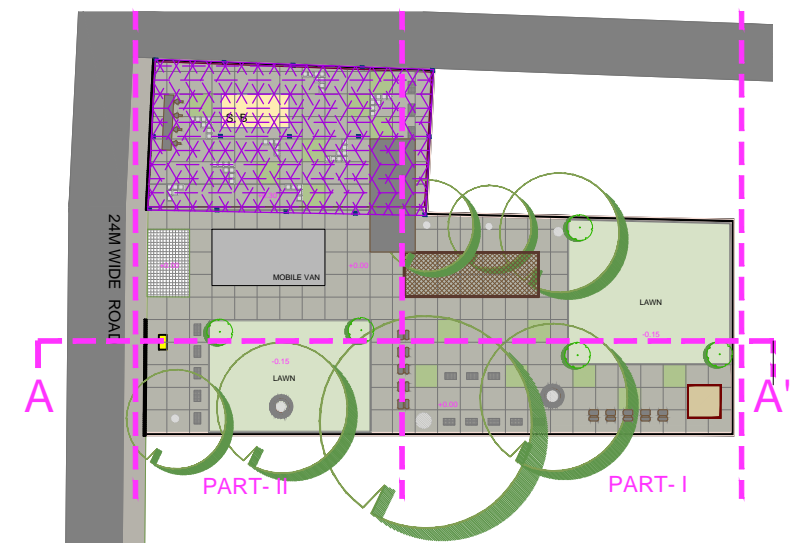
VK:U



SECTION- AA'  
 (Part- I)



SECTION- AA'  
 (Part- II)

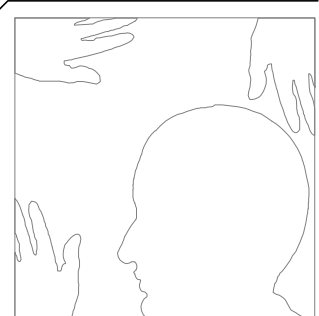


VK:U  
 Urban

73/2 Bhakti Marg  
 Off Law College Road  
 Pune 411 004

t +91 20 66268888  
 f +91 20 66268801

e mail@vkarch.com  
 w www.vkarch.com



VK:U

# Visuals

ABB-01  
S.NO 135, BANER, PUNE  
Theme: E-Learning



SMART CITY, PLACEMAKING

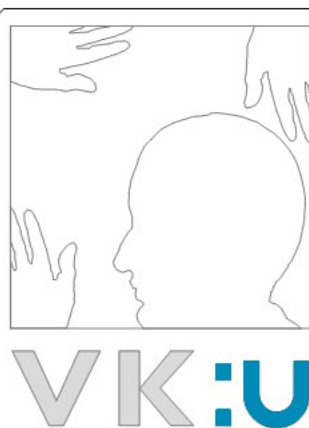
VK:U  
Urban

73/2 Bhakti Marg  
Off Law College Road  
Pune 411 004

t +91 20 66268888  
f +91 20 66268801

e mail@vkarch.com  
w www.vkarch.com

© VK:a architecture





Better By  
**DESIGN**

VK:u urban

73/2/1, Bhakti Marg, Off. Law College Road, Pune: 411004  
T: +91 20 66268888 | F: +91 20 66268801 | [www.vkarch.com](http://www.vkarch.com)