



URBAN95

**TACTICAL INTERVENTION – 6
@ SONAWANE MATERNITY HOSPITAL**



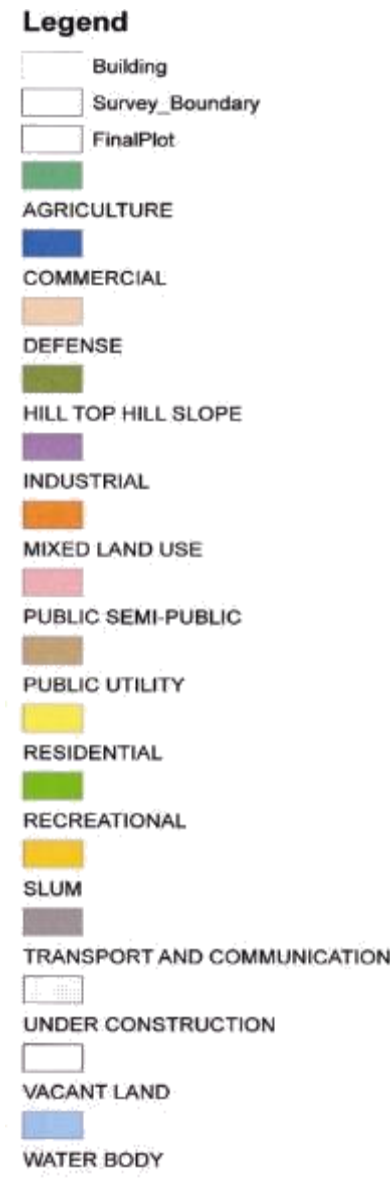
Presented by:

Dr. Milind Khedkar, Medical Officer, Health Department, Pune Municipal Corporation
Mr. Vikrant Kapse, Sectional Engineer, ADMC Office Technical, Pune Municipal Corporation

SITE LOCATION AND NEIGHBOURHOOD



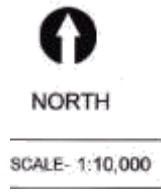
- Site is located in the premises of Sonawane maternity Hospital, 270, Jawaharlal Nerhru Rd, Kashewadi, Pune.
- Site coordinates- 18° 28'49.7" N, 73° 54'06.0" E



Source: https://www.pmc.gov.in/informpdf/City%20Engineer%20office/ELU_SEC_II_PA_GE_1.jpg

FIGURE NO – 1A EXISTING LANDUSE MAP

AREA: 13,000 sqm (total area of the site)
 Approach: The site is approached by a 12 meters secondary road (Jawaharlal Nehru road)



ESTIMATED BENEFICIARIES (0- 8yrs), caregivers separate



According to the the case paper department, 1039 kids per month

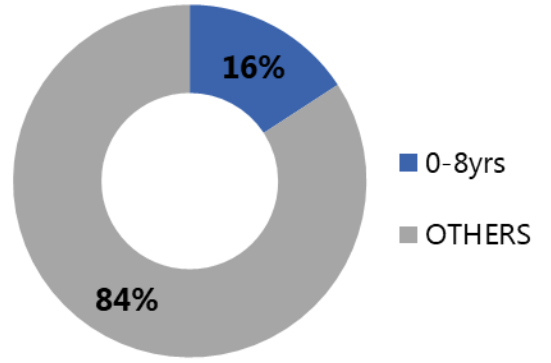
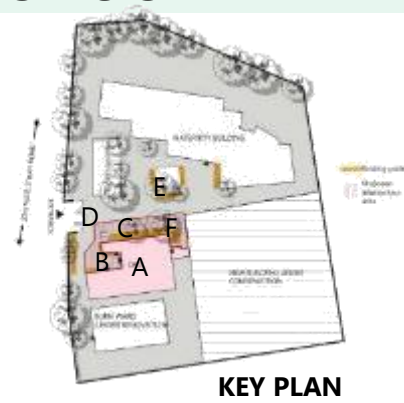


FIGURE NO – 1B SITE LOCATION MAP

The hospital is a city level maternity hospital with slums on both the sides

SITE SPACES



A. OPD WAITING AREA
Child playing inside with caregiver



B. SPACE OUTSIDE OPD
*Children playing with the caregivers in an over-crowded area.
 Visitor's parking in the area*



C. SIDE SPACE OF OPD
Space used as vehicular parking by nearby slum dwellers



D. SITE ENTRANCE
*The pedestrian entrance is un-even and lacks signages
 ITCs waiting in an un-hygienic environment on a platform*



E. AREA IN FRONT OF MATERNITY WARD
ITCs sitting, eating and children playing on a water tank



F. OPD BACK ENTRANCE
*The path for Case Paper department is blocked by vehicular parking
 (image source: TARU Leading Edge)*

OBSERVATIONAL MAPPING DATA



ACTIVITY MAPPING IN 1 HOUR AT THE OPD ENTRNACE IMMUNISATION DAY FROM 9AM TO 1PM AND 2PM TO 5PM

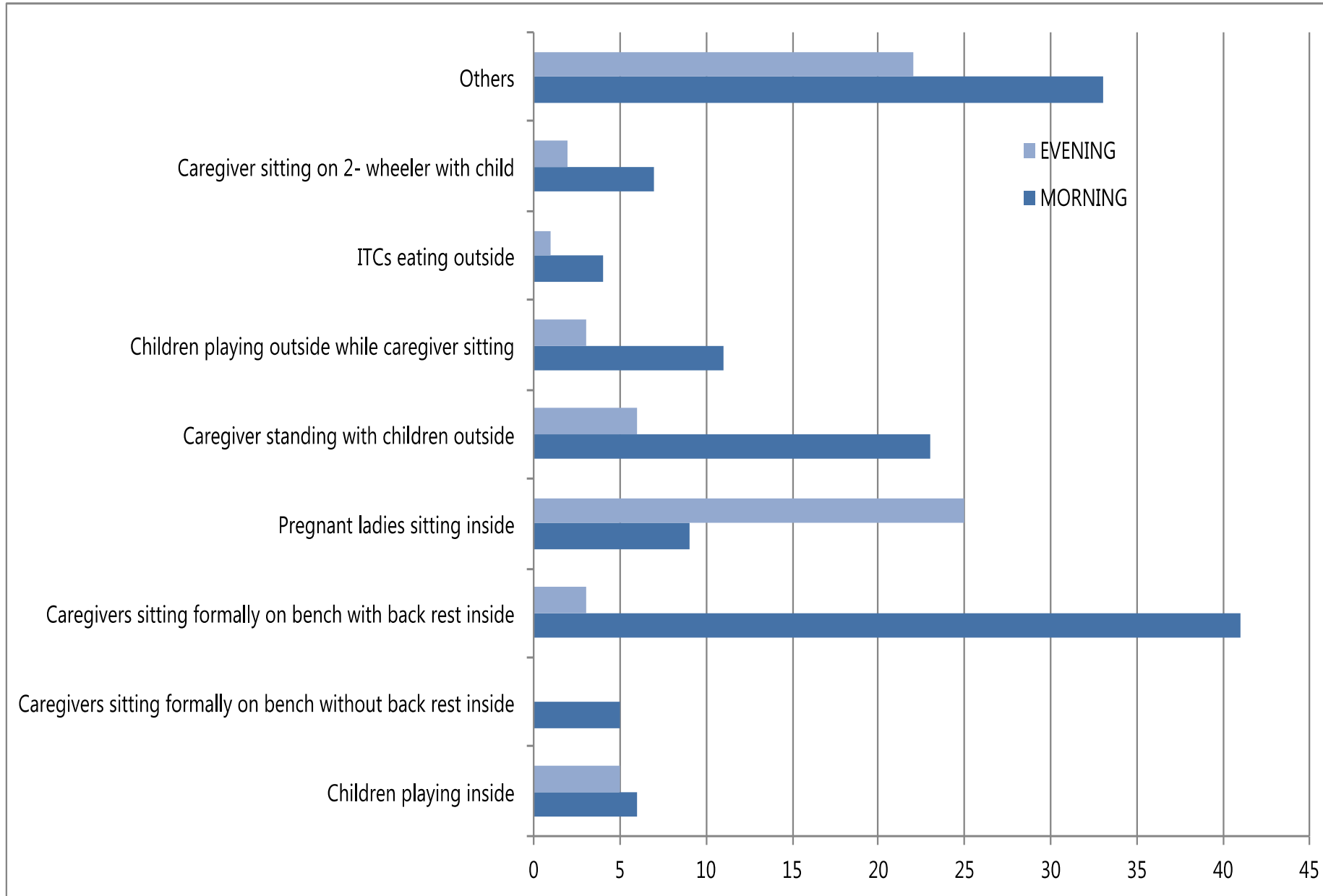


FIGURE NO – 4



High footfall of children is observed during morning hours especially on immunization days and pregnant ladies during afternoon hours



NOTES:
This Activity mapping is done at the entrance of the OPD



CONCLUSIONS FROM OBSERVATIONAL DATA, INTERCEPT SURVEY DATA AND QUALITATIVE ANALYSIS

- **Most of the ITCs (67%) spend more than an hour mostly in the waiting area**
- **Relatives/ friends wait outside which is un-safe and un-hygienic**
- **77% don't find the seating comfortable especially pregnant ladies**
- **85% people reported that current waiting area is insufficient.**
- **Vehicles are parked in front of OPD front entrance**
- **Lack of waiting area for ITCs.**
- **Insufficient space for sitting of care givers**
- **No space for People accompanying patients**
- **OPD entrance is blocked by two wheeler / rikshaw parking**

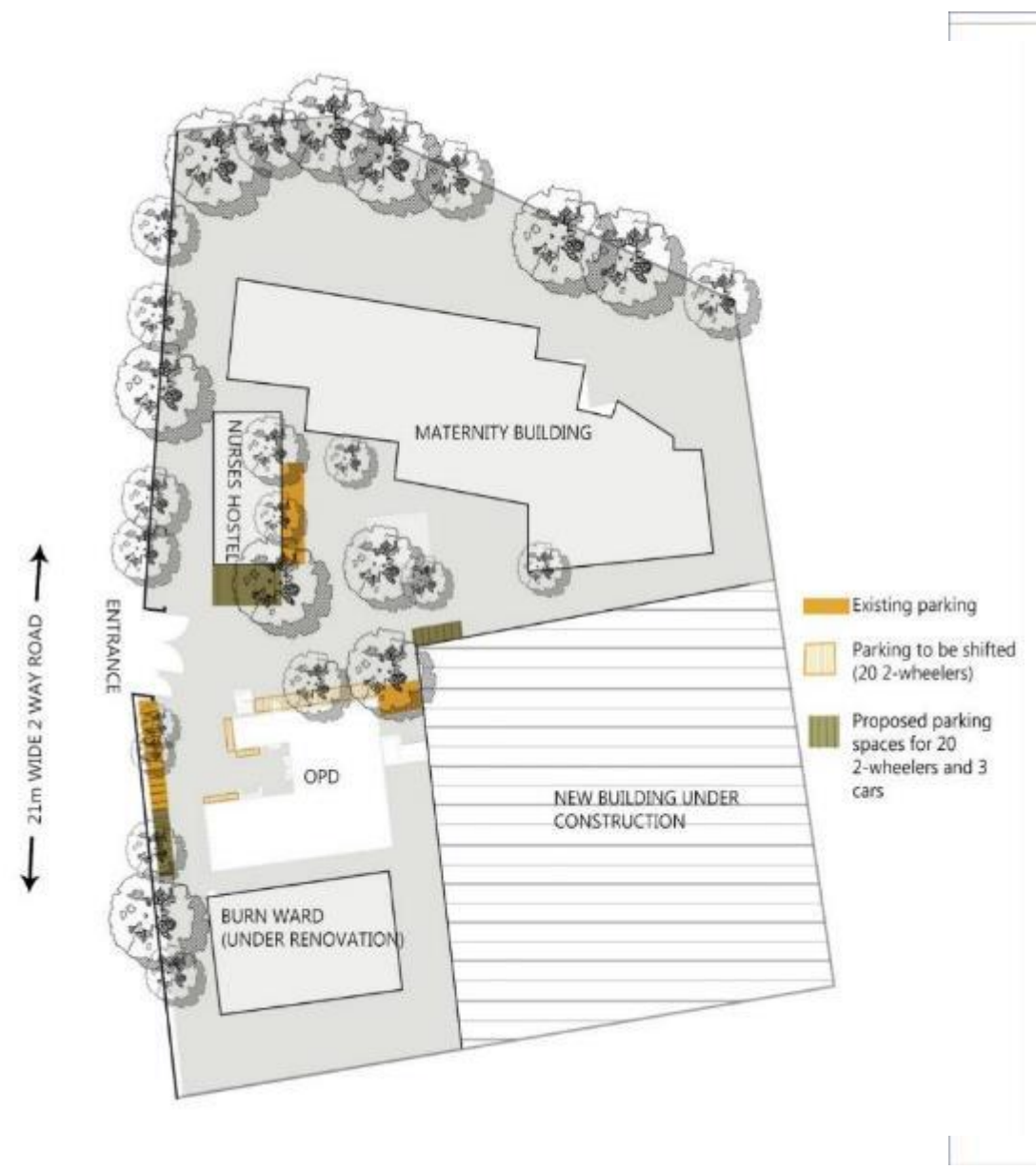


FIGURE NO – 19A PROPOSED PARKING PLAN

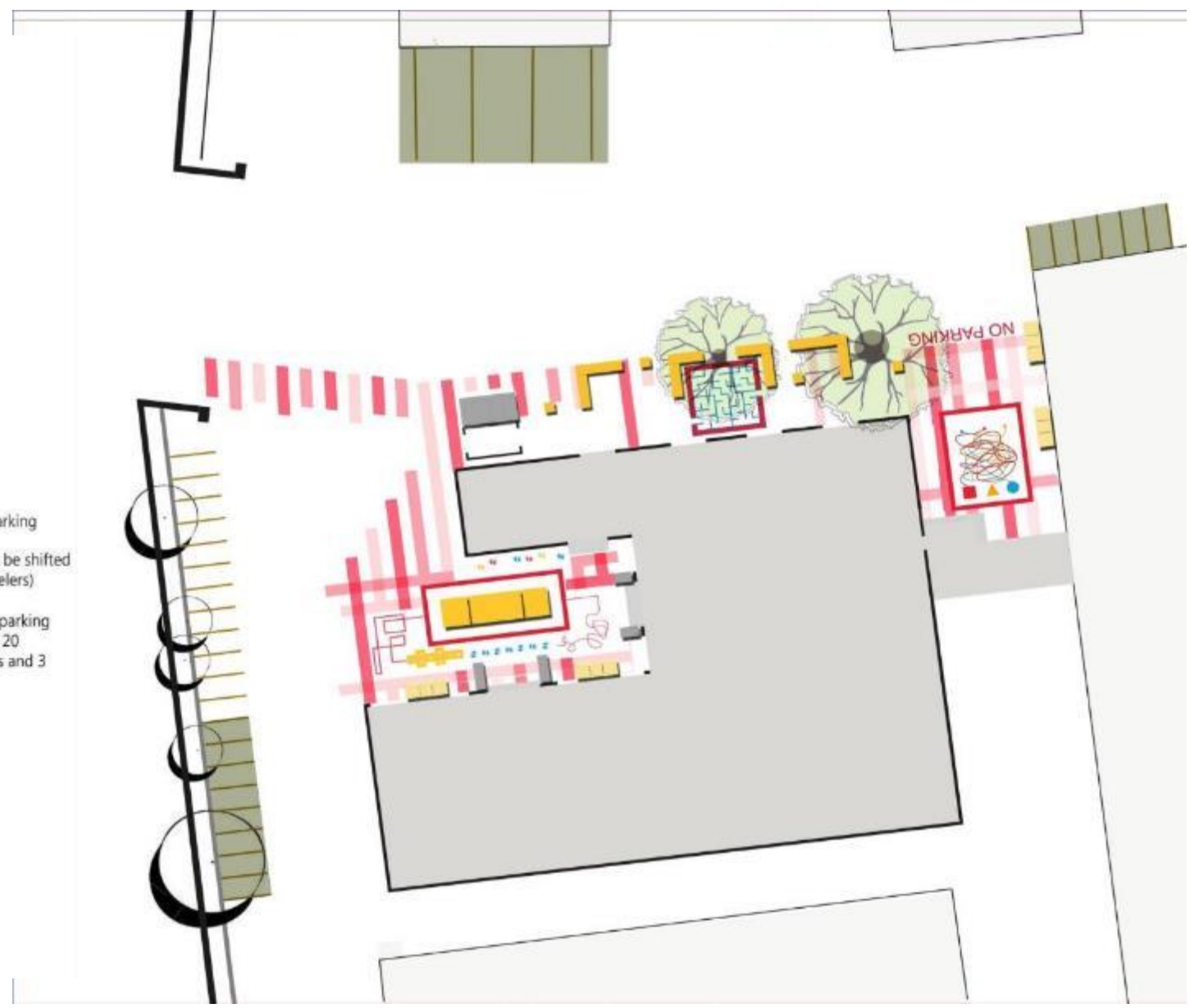


FIGURE NO – 19B PROPOSED CONCEPT PLAN

About Proposed parking plan:

- Site has 21m wide 2 way abutting road.
- Overall building premises of Sonawane maternity hospital which has burn ward, OPD, Nurses hostel and maternity building.
- OPD and nurses hostel had provision of parking besides the buildings.
- Further parking space provided around OPD was selected as intervention area.

About Proposed concept plan:

- Existing parking around OPD was shifted near boundary of hospital, within premises.
- Floor was painted with different games those places are highlighted in shades of red in above figure.
- Proposes additional sitting is shown in yellow colour.

seatings to be constructed in 3 modules (refer 'module details' for dimensions)

all the modules to be painted from all the 4 sides and top in 'Orange Vision' of Asian paints' Apex Tile Guard (refer BOQ for details)

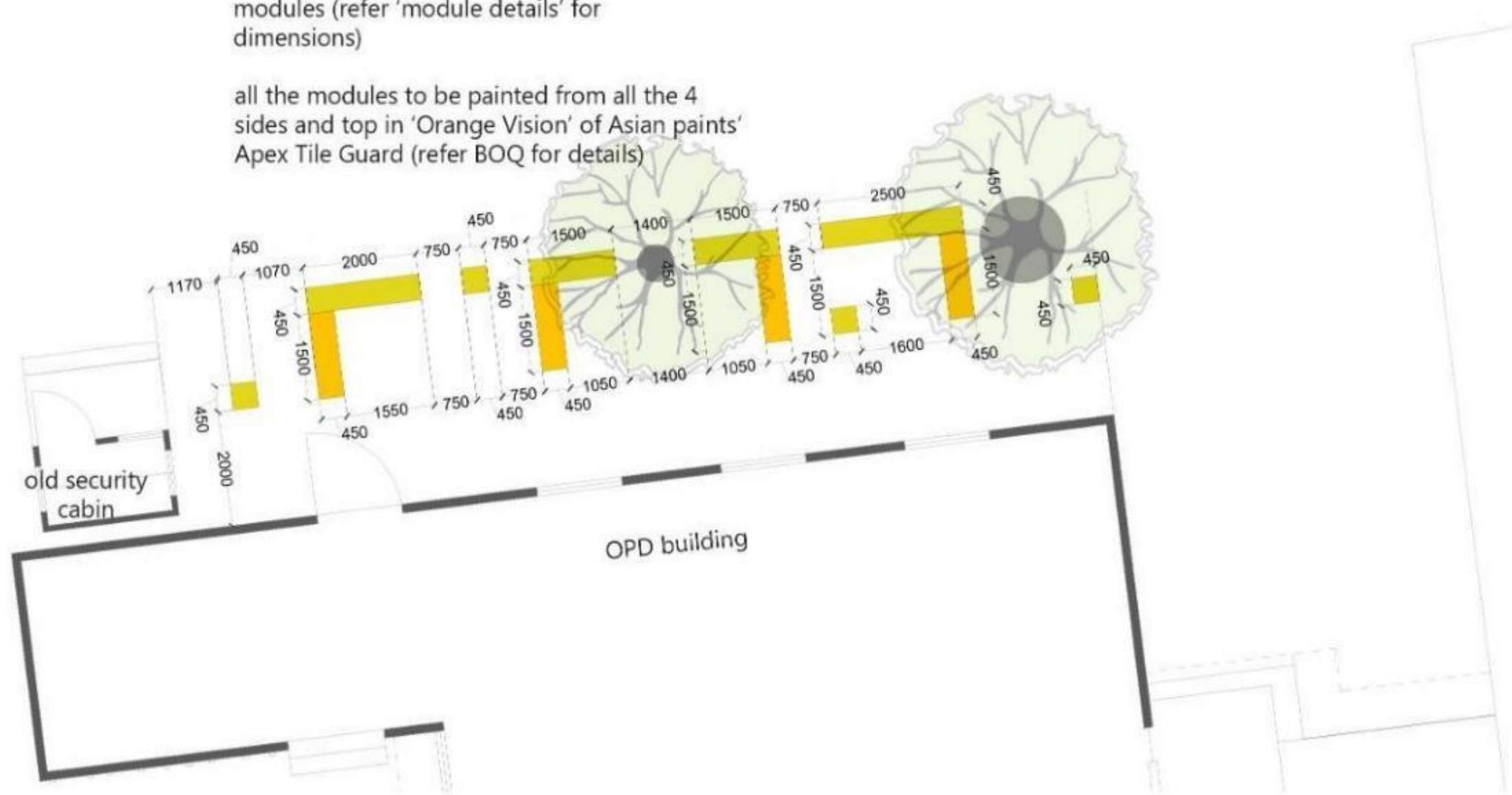


FIGURE NO – 20

About Proposed concept plan:

- Civil work was done to repair existing spoiled drainage line.
- By Fixing of broken pipe leveling them along with filling and leveling of an un-used manhole at the hospital entrance additional sitting was proposed.
- Old material like cupboards were used by cutting, welding, and softening of edges by M-Seal.

seatings of height 450mm
 seatings of height 250mm

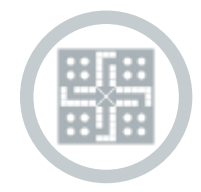
CONCEPT DRAWING FOR CIVIL WORK
 (TO BE REFERRED ONLY FOR PLACEMENT AND MEASUREMENTS OF SEATINGS)

N
 SCALE: 1:100
 ALL DIMENSIONS ARE IN MM

Tactical Intervention Experiences @ Sonawane Maternity Hospital - Outdoor Waiting Space Solution



Wall painting



Games painted on floor



Playing equipment's provided



Additional seating provided



Civil work, plumbing work and wall painting, supported by PMC's health department and contractor.



Lining out, floor, game, and signages painting by volunteers.







THEN



NOW

Tuesday, 25 February 2020

Pune Municipal Corporation transforms Sonawane Hospital's outdoor waiting space into a child- and family-friendly zone

Families along with their babies and toddlers participated in large numbers at this fun-filled intervention



24 February 2020: Taking a lead in promoting children and family friendly spaces within the city, Pune Municipal Corporation (PMC), with the support of the Bernard Van Leer Foundation (BvLF), technical partners, Taru Leading Edge and Ecofirst Services Ltd. and SMEP's Brick School of Architecture, implemented a tactical U-urbanism intervention at Sonawane Hospital, Bhavani Peth. One of the known medical facilities in Pune, the Sonawane hospital's outdoor waiting area was transformed into a playful, child and family friendly zone on Saturday, 22nd February 2020. Hospitals can often be stressful and dull places for families. The aim of this intervention was to provide engaging, comfortable, safe and playful outdoor space for young children and their caregivers, such as their parents, grandparents and other brothers and sisters, when they visit the maternity hospital or wait there; it showcases the impact and importance of having children-friendly spaces as part of the infrastructure and services that cater to babies, young children and their families, maternity hospitals and health clinics being amongst them. The intervention included creating clean outdoor spaces, with shaded, playful seating areas, painting floor and wall games that focus on cognitive, social and physical development of young children as well as provision of alternate parking spaces. The local community, particularly families along with their babies and toddlers took advantage of the space created for them in large numbers with a lot of excitement and enthusiasm. Children from Brick School of Architecture, Hospital and Health Department staff, Bhavani Peth Ward officials, actively aided and participated in the creation of the child and family-friendly waiting space. **Pune Corporator, Honourable Ms. Archana Patil,** said "Children focussed interventions like these are very important for the development of the society. I am thankful to PMC officials, BvLF and all stakeholders for conducting such interventions in the city." **Pune Corporator, Honourable Ms. Manisha Ladkat** further noted, "I am pleased to see families and children participate with great enthusiasm for this intervention. We should encourage more of such activities that focus on young children and caregivers to promote holistic development and increase safe, accessible spaces for them." **Dr. Ramchandra Hankare, HOD, PMC- Health Department** said, "We are very pleased with the outcome of this intervention having witnessed the enthusiasm from the participants. We will continue to promote the development of playful, safe and accessible spaces for young children in new and existing hospitals, especially where there is high footfall of young children and caregivers." **Ms. Rushda Majeed, Representative India, Bernard van Leer Foundation,** said, "With each intervention, Urban95 aims at conveying the importance of having clean, green public spaces that benefit babies, toddlers, and their parents and other caregivers. We are grateful to the Pune Municipal Corporation for taking this initiative forward so wholeheartedly. The intervention conducted at Sonawane Hospital is an excellent illustration of simple measures to improve the everyday lives of young children and their families." PMC is supported by BvLF in the municipality's aim to make Pune a child and family-friendly city under BvLF's global Urban95 initiative.

About Pune Urban95 Programme

Under Pune Urban95 programme, city decision-makers, managers, urban planners, engineers, and architects are taking a lead in incorporating a focus on early childhood development into the planning and management of Pune city. The initiative focusses on testing a series of interventions that can eventually be scaled up across the city.

About Urban95

Urban95 is an initiative created in 2016 by the Bernard van Leer Foundation to help change the landscapes and opportunities that shape young children's lives. Central to this initiative is the question "If you could experience the city from 95 cms, what would you change?" Working with city leaders, planners, architects, and innovators, Urban95 is helping bring this perspective to the center of design decisions in cities around the world.

About Bernard van Leer Foundation

BvLF is an independent foundation working worldwide to inspire and inform large scale action to improve the health and well-being of babies, toddlers and the people who care for them. It provides financial support and expertise to partners in government, civil society and business to help test and scale effective services for young children and families.

Posted by [Bhanu Josrani](#) at 11:36



Labels: [Pune Municipal Corporation](#)

No comments:

Post a Comment



Pune, February 24, 2020: Taking a lead in promoting children and family-friendly spaces within the city, Pune Municipal Corporation (PMC), with the support of the Bernard Van Leer Foundation (BvLF), technical partners, Taru Leading Edge, and Ecofirst Services Ltd. and SMEP's Brick School of Architecture, implemented a tactical U-urbanism intervention at Sonawane Hospital, Bhavani Peth. One of the known medical facilities in Pune, the Sonawane hospital's outdoor waiting area was transformed into a playful, child and family-friendly zone on February 22, 2020.



Hospitals can often be stressful and dull places for families. The aim of this intervention was to provide engaging, comfortable, safe and playful outdoor space for young children and their caregivers, such as their parents, grandparents and other brothers and sisters when they visit the maternity hospital or wait there. It showcases the impact and importance of having children-friendly spaces as part of the infrastructure and services that cater to babies, young children and their families, maternity hospitals and health clinics being amongst them.

The intervention included creating clean outdoor spaces, with shaded, playful seating areas, painting floor, and wall games that focus on the cognitive, social and physical development of young children as well as the provision of alternate parking spaces. The local community, particularly families along with their babies and toddlers took advantage of the space created for them in large numbers with a lot of excitement and enthusiasm. Children from Brick School of Architecture, Hospital and Health Department staff, Bhavani Peth Ward officials, actively aided and participated in the creation of the child and family-friendly waiting space.



Dr. Ramchandra Hankare, HOD, PMC- Health Department said, "We are very pleased with the outcome of this intervention having witnessed the enthusiasm from the participants. We will continue to promote the development of playful, safe and accessible spaces for young children in new and existing hospitals, especially where there is a high footfall of young children and caregivers."

Pune Corporator, Hon'ble Archana Patil said, "Children focussed interventions like these are very important for the development of the society. I am thankful to PMC officials, BvLF and all stakeholders for conducting such interventions in the city."

Pune Corporator, Hon'ble Manisha Ladkat further noted, "I am pleased to see families and children participate with great enthusiasm for this intervention. We should encourage more of such activities that focus on young children and caregivers to promote holistic development and increase safe, accessible spaces for them."

Rushda Majeed, Representative India, Bernard van Leer Foundation, said, "With each intervention, Urban95 aims at conveying the importance of having clean, green public spaces that benefit babies, toddlers, and their parents and other caregivers. We are grateful to the Pune Municipal Corporation for taking this initiative forward so wholeheartedly. The intervention conducted at Sonawane Hospital is an excellent illustration of simple measures to improve the everyday lives of young children and their families."

PMC is supported by BvLF in the municipality's aim to make Pune a child and family-friendly city under BvLF's global Urban95 initiative.



Pune Municipal Corporation transforms Sonawane Hospital's outdoor waiting space into a child-and family-friendly zone

Posted By [admin](#) on February 25, 2020 In: [Regional](#) No Comments [Print](#) [Email](#)

Families along with their babies and toddlers participated in large numbers at this fun-filled intervention

PUNE: Taking a lead in promoting children and family-friendly spaces within the city, Pune Municipal Corporation (PMC), with the support of the Bernard Van Leer Foundation (BvLF), technical partners, Taru Leading Edge, and Eco first Services Ltd. and SMEP's Brick School of Architecture, implemented a tactical U-urbanism Intervention at Sonawane Hospital, Bhavani Peth. One of the known medical facilities in Pune, the Sonawane hospital's outdoor waiting area was transformed into a playful, child and family-friendly zone on Saturday, 22nd February 2020.

Hospitals can often be stressful and dull places for families. The aim of this Intervention was to provide engaging, comfortable, safe and playful outdoor space for young children and their caregivers, such as their parents, grandparents and other brothers and sisters, when they visit the maternity hospital or wait for there; it showcases the impact and importance of having children-friendly spaces as part of the infrastructure and services that cater to babies, young children and their families, maternity hospitals and health clinics being amongst them.

The intervention included creating clean outdoor spaces, with shaded, playful seating areas, painting floor, and wall games that focus on the cognitive, social and physical development of young children as well as the provision of alternate parking spaces. The local community, particularly families along with their babies and toddlers took advantage of the space created for them in large numbers with a lot of excitement and enthusiasm. Children from Brick School of Architecture, Hospital and Health Department staff, Bhavani Peth Ward officials, actively aided and participated in the creation of the child and family-friendly waiting space.

“ Dr. Ramchandra Hankare, HOD, PMC- Health Department said, "We are very pleased with the outcome of this intervention having witnessed the enthusiasm from the participants. We will continue to promote the development of playful, safe and accessible spaces for young children in new and existing hospitals, especially where there is the high footfall of young children and caregivers."

“ Pune Corporator, Honourable Ms. Archana Patil, said "Children focussed interventions like these are very important for the development of the society. I am thankful to PMC officials, BvLF and all stakeholders for conducting such interventions in the city."

“ Pune Corporator, Honourable Ms. Manisha Ladkat further noted, "I am pleased to see families and children participate with great enthusiasm for this intervention. We should encourage more of such activities that focus on young children and caregivers to promote holistic development and increase safe, accessible spaces for them."

“ Ms. Rushda Majeed, Representative India, Bernard van Leer Foundation, said, "With each intervention, Urban95 aims at conveying the importance of having clean, green public spaces that benefit babies, toddlers, and their parents and other caregivers. We are grateful to the Pune Municipal Corporation for taking this initiative forward so wholeheartedly. The intervention conducted at Sonawane Hospital is an excellent illustration of simple measures to improve the everyday lives of young children and their families."

PMC is supported by BvLF in the municipality's aim to make Pune a child and family-friendly city under BvLF's global Urban95 initiative.