



Ministry of Housing and Urban Affairs  
Government of India



## Nurturing Neighbourhoods Challenge

Cohort Phase  
Round 2 Technical Workshop Series  
Workshop 3  
**Best practices of designing for young children**  
Tuesday, 13 July 2021

Presented by  
Ms. Madhura Kulkarni  
Senior Project Associate  
WRI India

#NurturingNeighbourhoodsChallenge



Photo Credits: Courtesy of Firoz Merchant/Pic productions and Bernard van Leer Foundation



Photo credits: ICLEI SA

**How would you feel walking through this space with a young child?**





Photo credits: ICLEI SA

**Would you feel better here?**





**How do young children experience public space?**



# Understand the needs of ITCs



THEY ARE ALWAYS WITH CAREGIVERS



THEY EXPERIENCE PUBLIC SPACE DIFFERENTLY



THEIR RANGE OF MOBILITY IS FAR SHORTER



THEIR BODIES AND BRAINS ARE MORE VULNERABLE



# Define Young children-priority zone in the neighbourhood



Select a neighbourhood based on high footfall of young children and caregivers

Locate ECD facilities and areas frequented by young children and caregivers within the neighbourhood

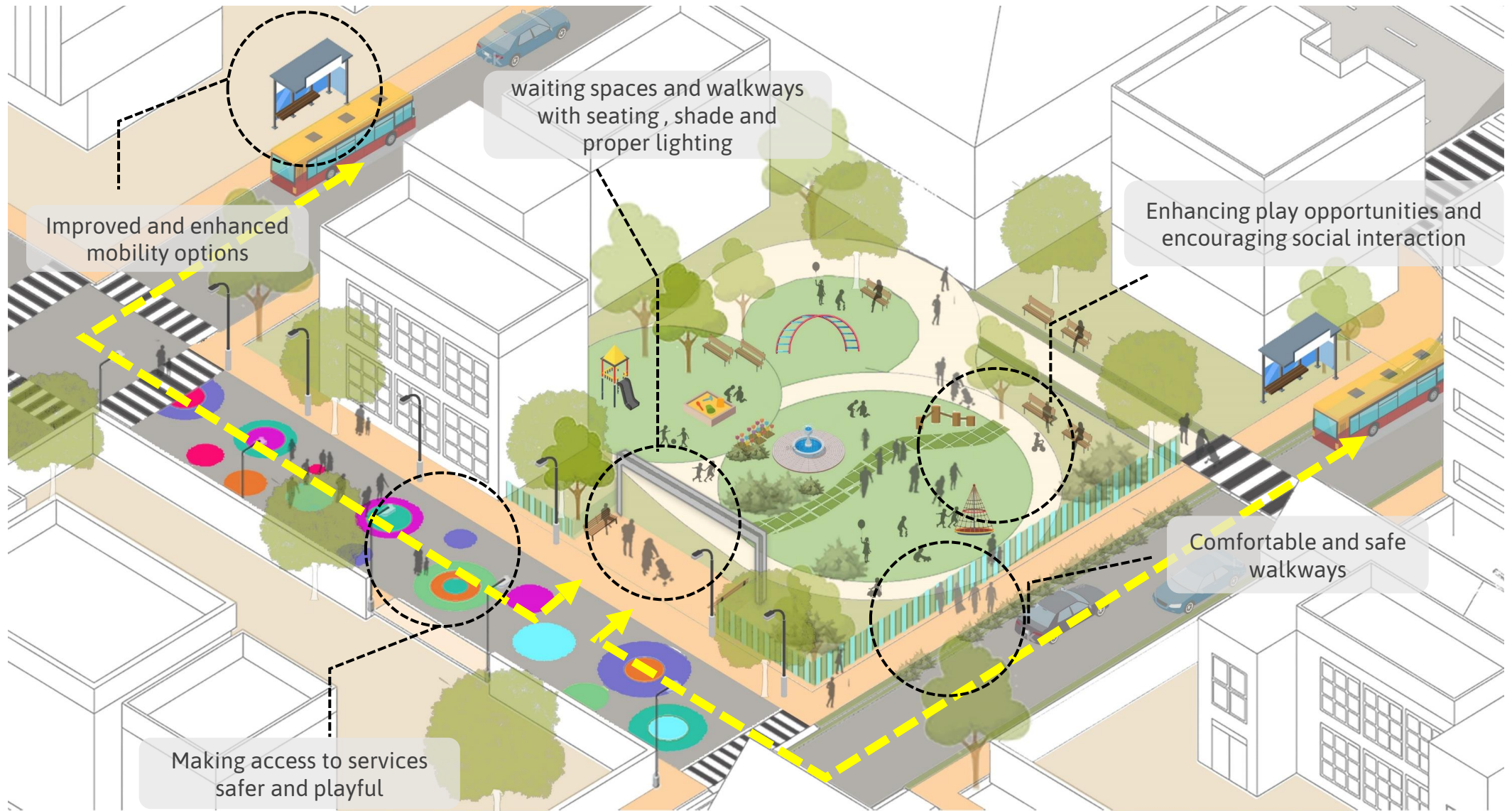
Prioritize project locations considering severity of issues related to young children and caregivers

Define priority zone of 500M around them

Identify strategies and demonstrate pilot solutions

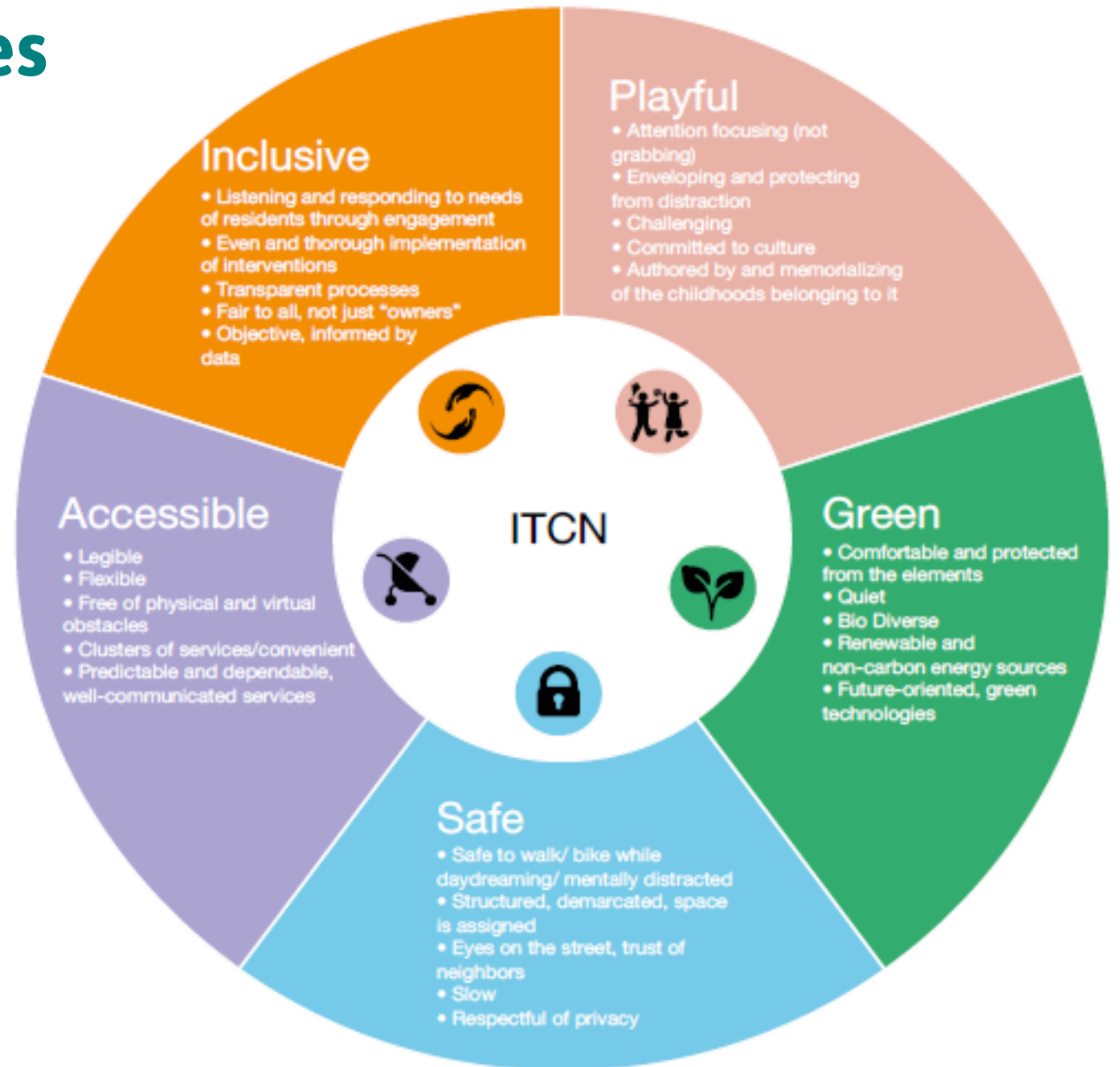


# Plan integrated solutions





# Consider ITCN objectives





# Design environments suitable for young children

## 0-3 year old children

Crawling

Standing

Walking

Ability to squat

Start developing gross and fine motor skills

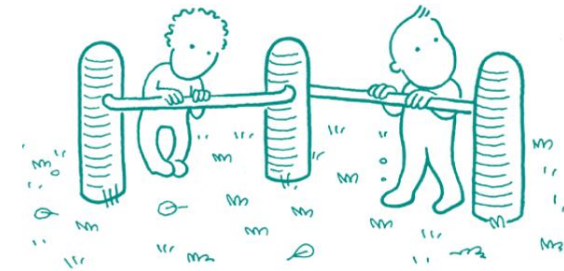
More spaces to interact and bond with caregivers

Start learning through interacting with senses

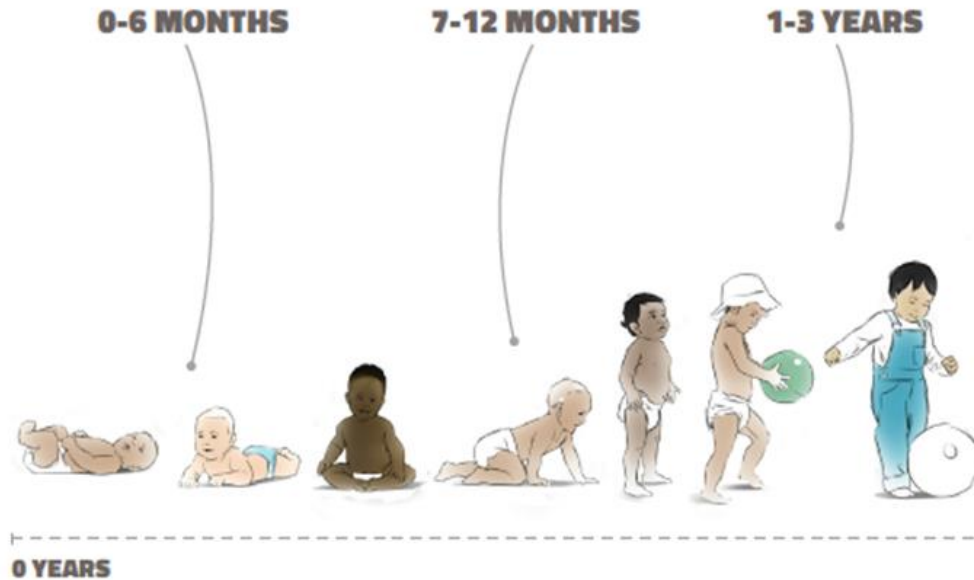
### Crawling



### Standing



### Balancing





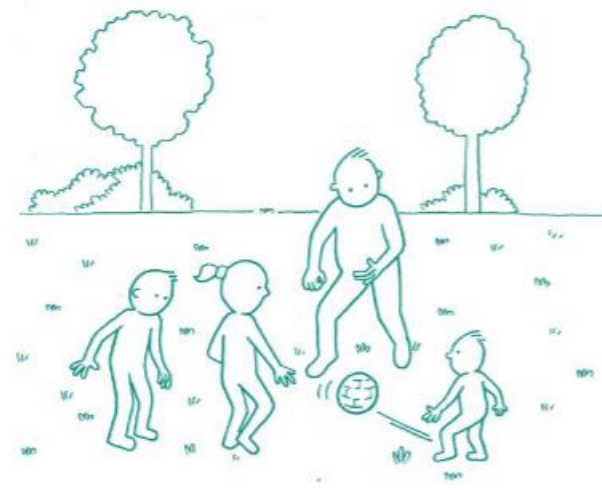
# Design environments suitable for young children

## 3-6 year old children

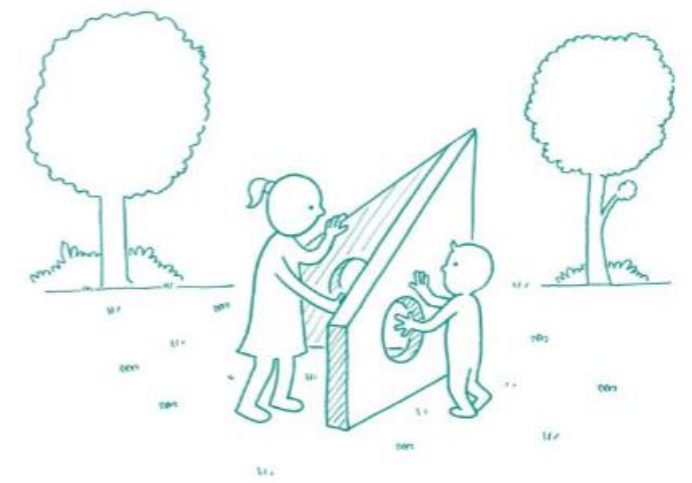
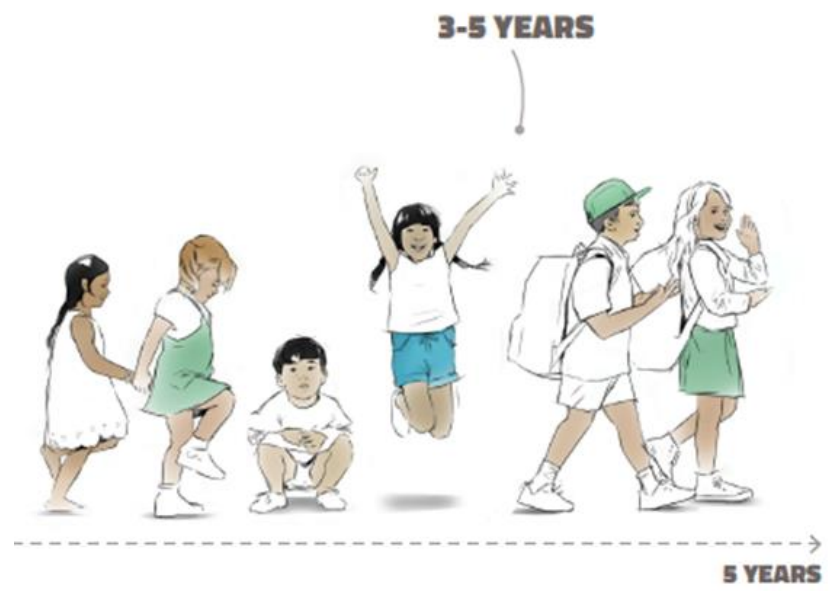
- Start making groups
- Coordination
- Imaginative play
- Jointly manipulates objects

Develop gross and fine motor skills further

More open spaces to interact with other children  
Interventions to support linguistic skills



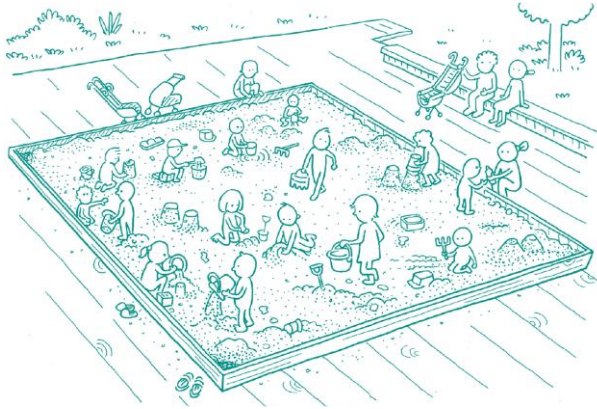
## Engaging opportunities with caregivers





# Design environments suitable for young children

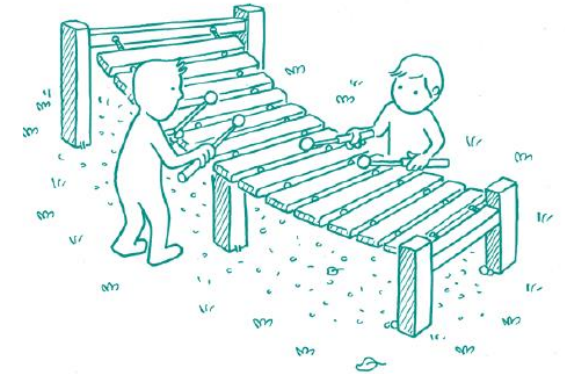
Sand



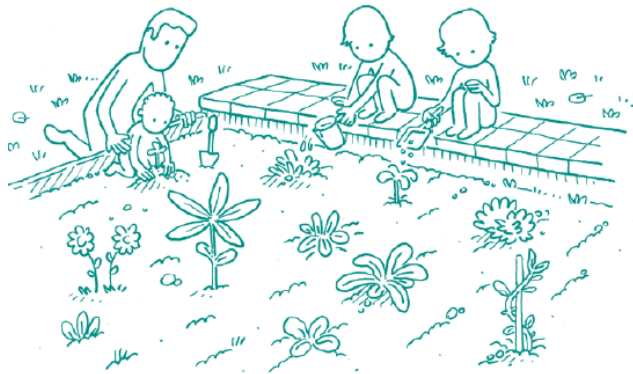
Water



Sounds



Plants



Small spaces



Loose parts





# Enabling positive behaviour change



Creating conducive ecosystem  
and communication

Induce supportive behaviours  
from service providers

Creating sense of ownership and  
support from the community



# Solution Domains



**Make streets safe and walkable**



**Improved access to early childhood services**



**Reimagine public open spaces for play and recreation**



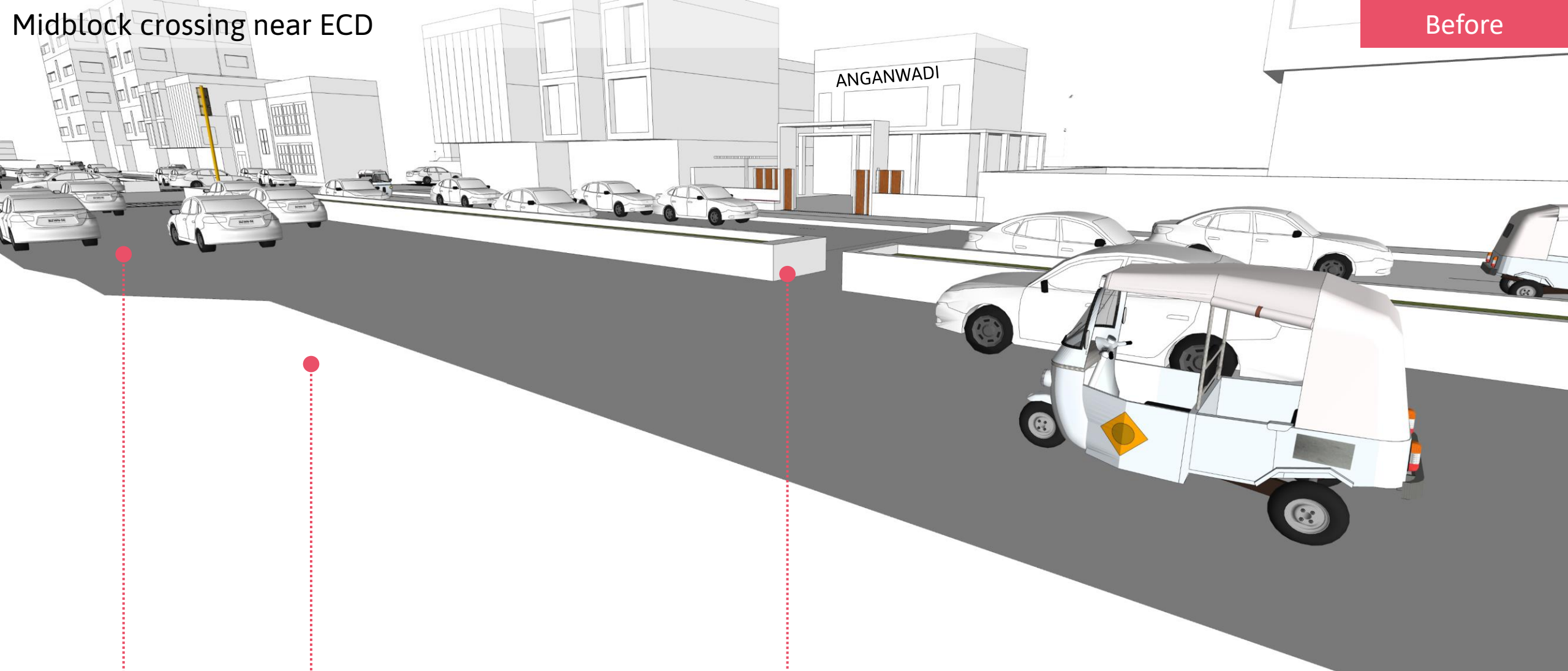
**Adapt public spaces with early childhood amenities**

**Make streets safe and walkable**



# Midblock crossing near ECD

Before



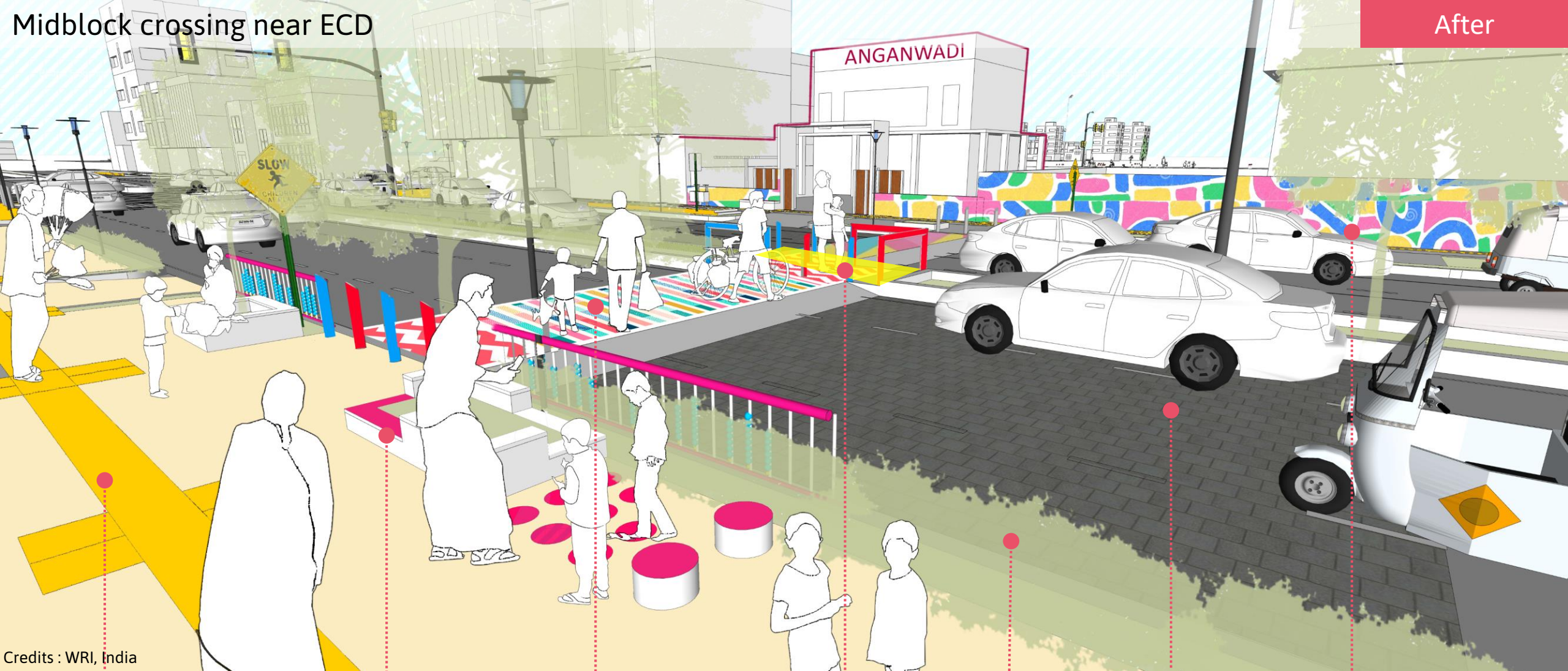
On street Parking

Un even and broken footpath

Narrow and unsafe openings for crossing

# Midblock crossing near ECD

After



Credits : WRI, India

Making Sidewalk accessible for all, by providing tactile flooring

Waiting area provided at the crossings, for ITC's to rest with play elements

Crossings highlighted to ensure visibility of ITCs crossing the street

Refuge space for ITCs to pause

Green buffer to protect ITCs from traffic

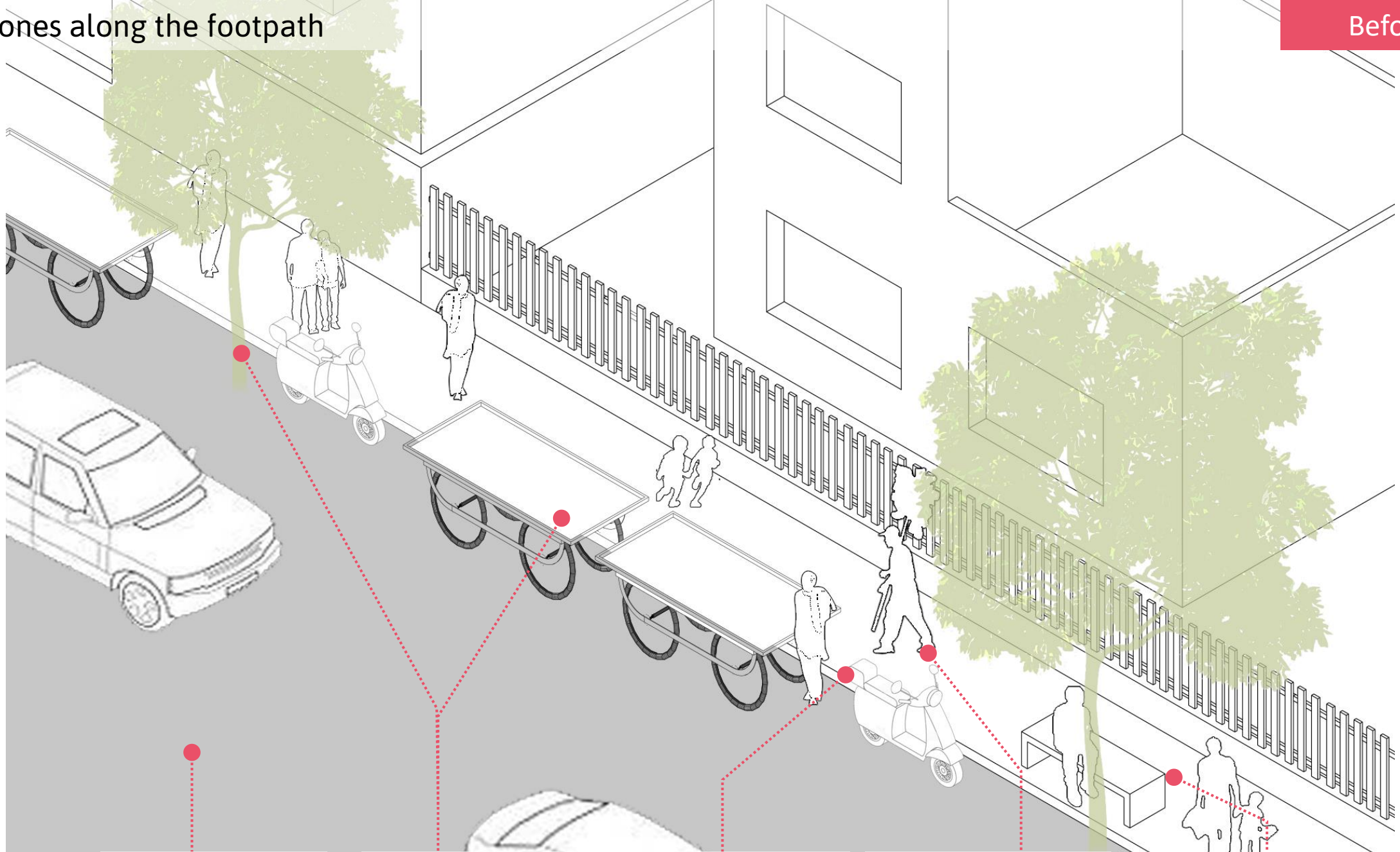
Paver blocks are installed before the crossings for reducing the speed

Playful and learning street arts/ murals provided for children around the frequented spaces of young children



# ITC play zones along the footpath

Before



Vehicles dominating the street with high speed

Informal vending or existing trees in the 'grey' area

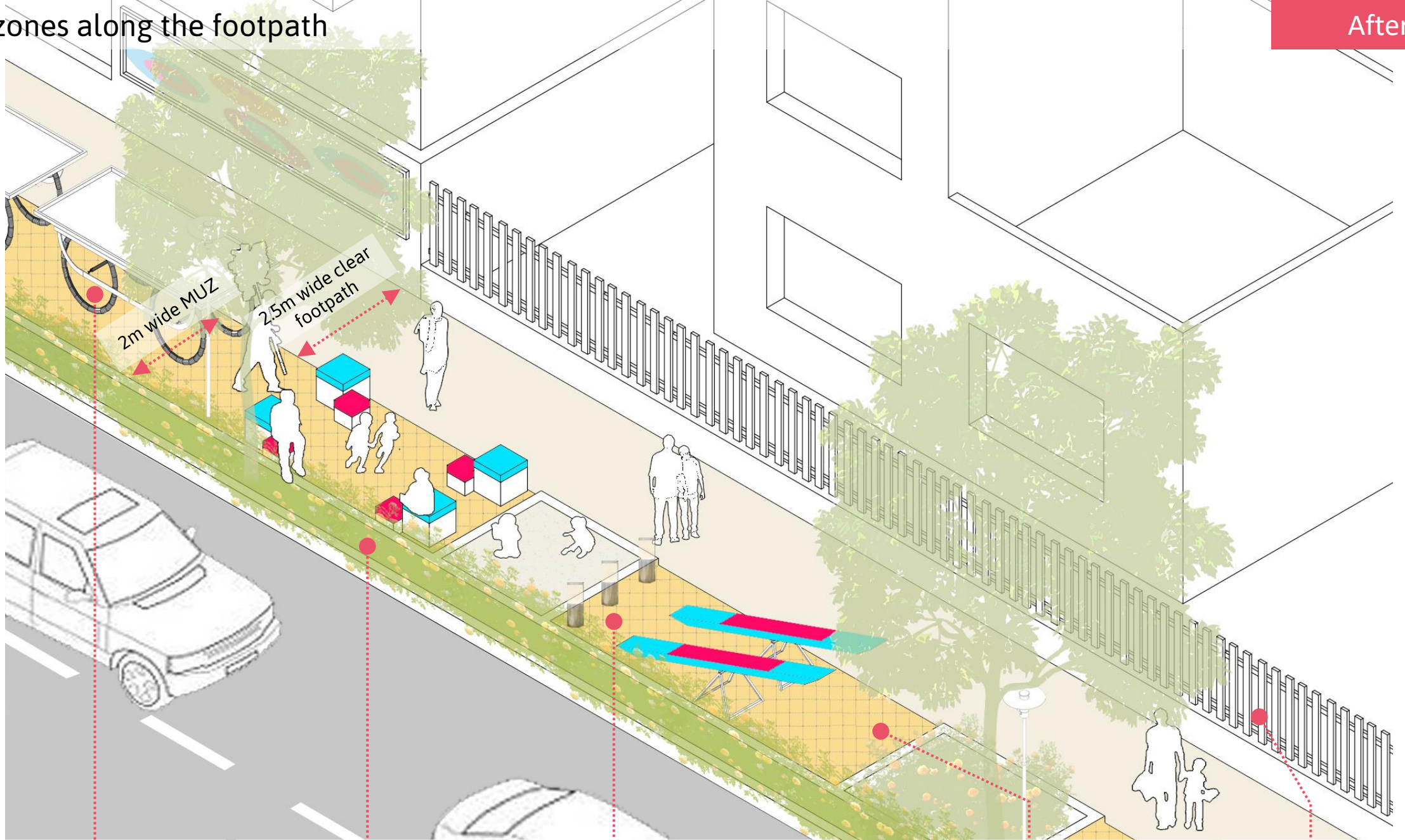
Lack of buffer puts ITCs at risk

Insufficient width of footpath makes it difficult to walk

No seating for ITCs to pause and rest while walking

# ITC play zones along the footpath

After



Dedicated space for vending kiosks in MUZ to ensure liveliness

Green buffer to guard ITCs from vehicular traffic

Play spaces overlooked by well-lit, shaded seating to encourage play and interaction amongst ITCs

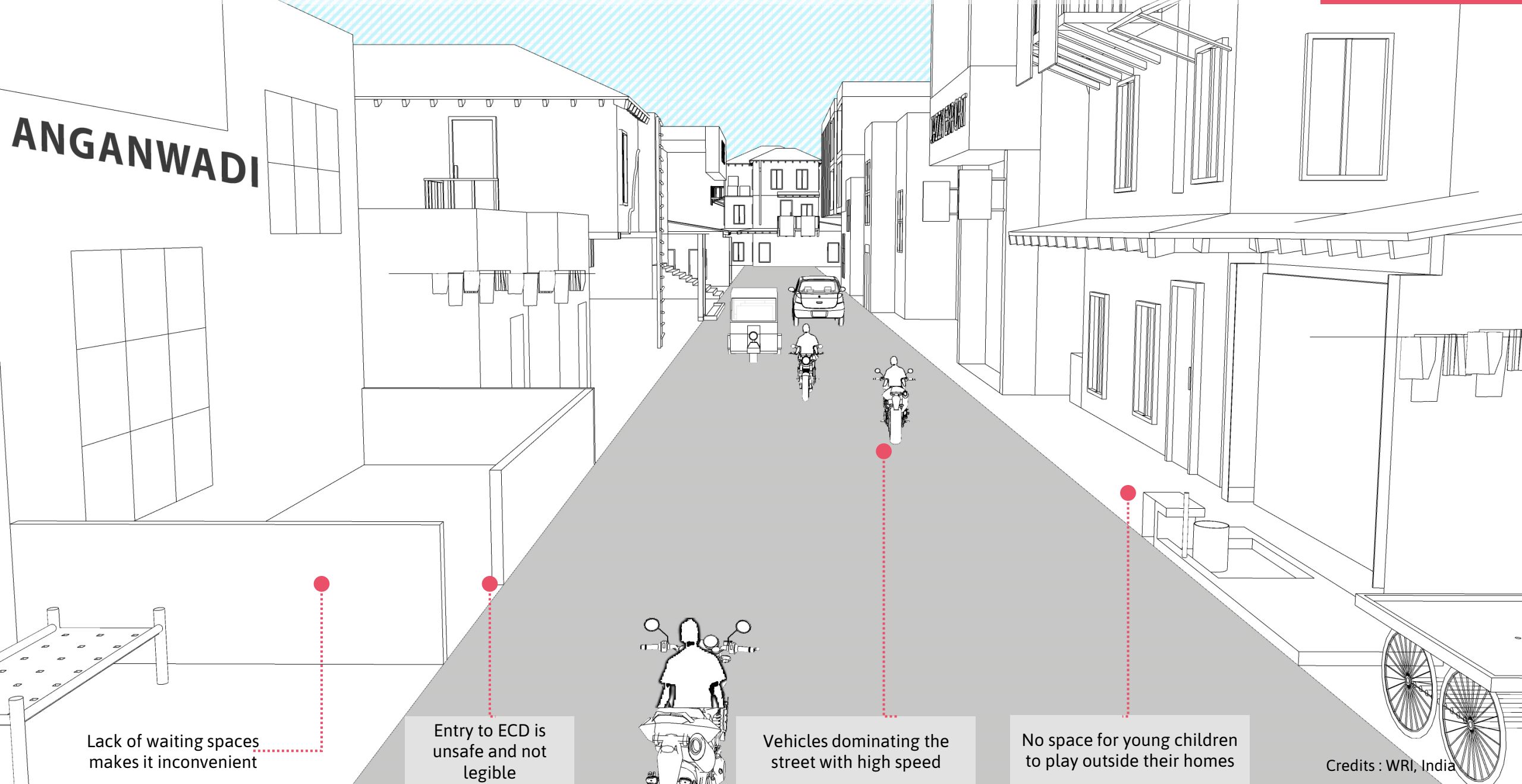
Multi Utility Zone (MUZ) as a flexible space for various functions

Porous edges to ensure 'eyes on street'



# Informal Settlements – lanes leading to ECD

Before



ANGANWADI

Lack of waiting spaces makes it inconvenient

Entry to ECD is unsafe and not legible

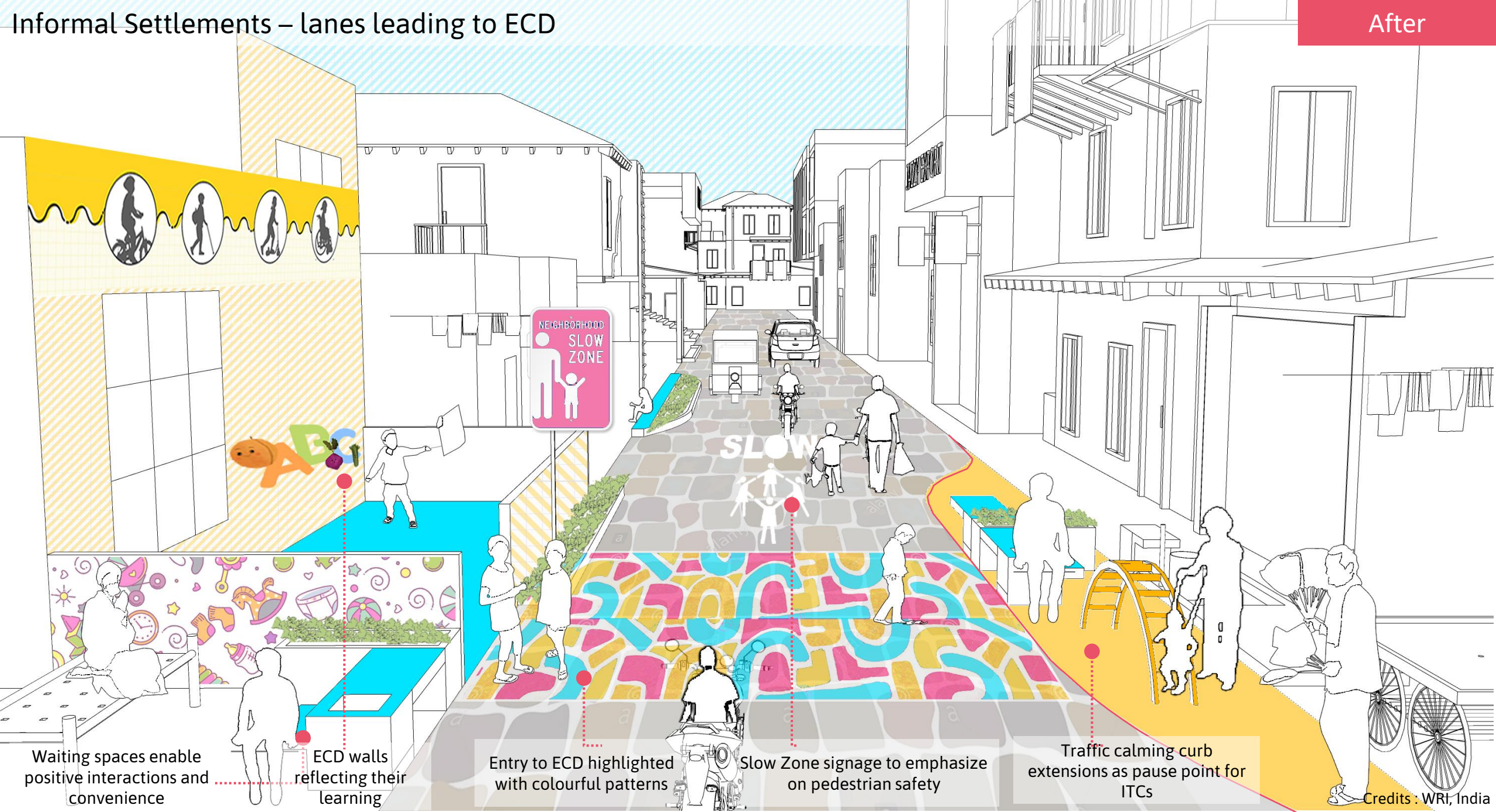
Vehicles dominating the street with high speed

No space for young children to play outside their homes

Credits : WRI, India

# Informal Settlements – lanes leading to ECD

After



Waiting spaces enable positive interactions and convenience

ECD walls reflecting their learning

Entry to ECD highlighted with colourful patterns

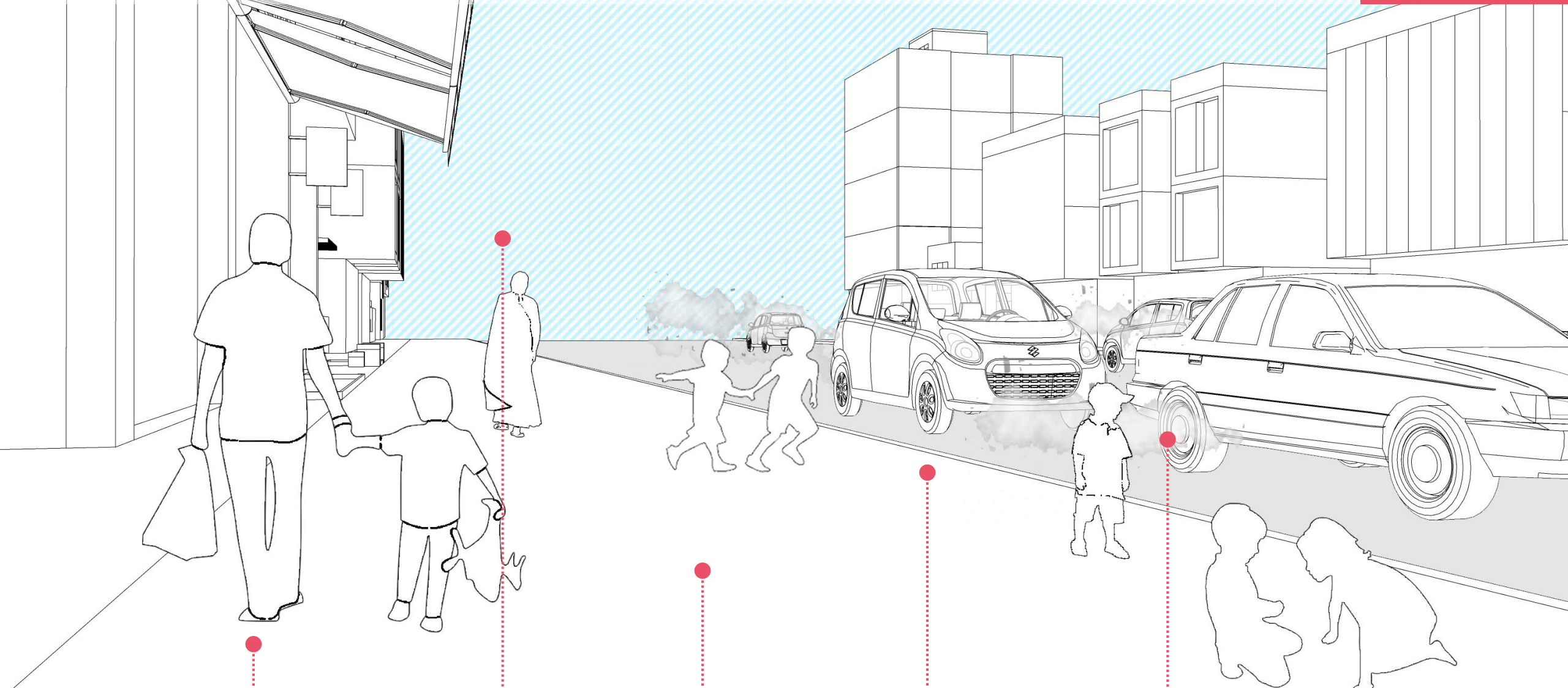
Slow Zone signage to emphasize on pedestrian safety

Traffic calming curb extensions as pause point for ITCs

Credits : WRT, India



# Experiences at 95cm along the footpath



No opportunities to play or engage while moving around



Lack of shade makes them uncomfortable



Lack of resting spaces along the footpath



No buffer from carriageway makes it unsafe for ITCs

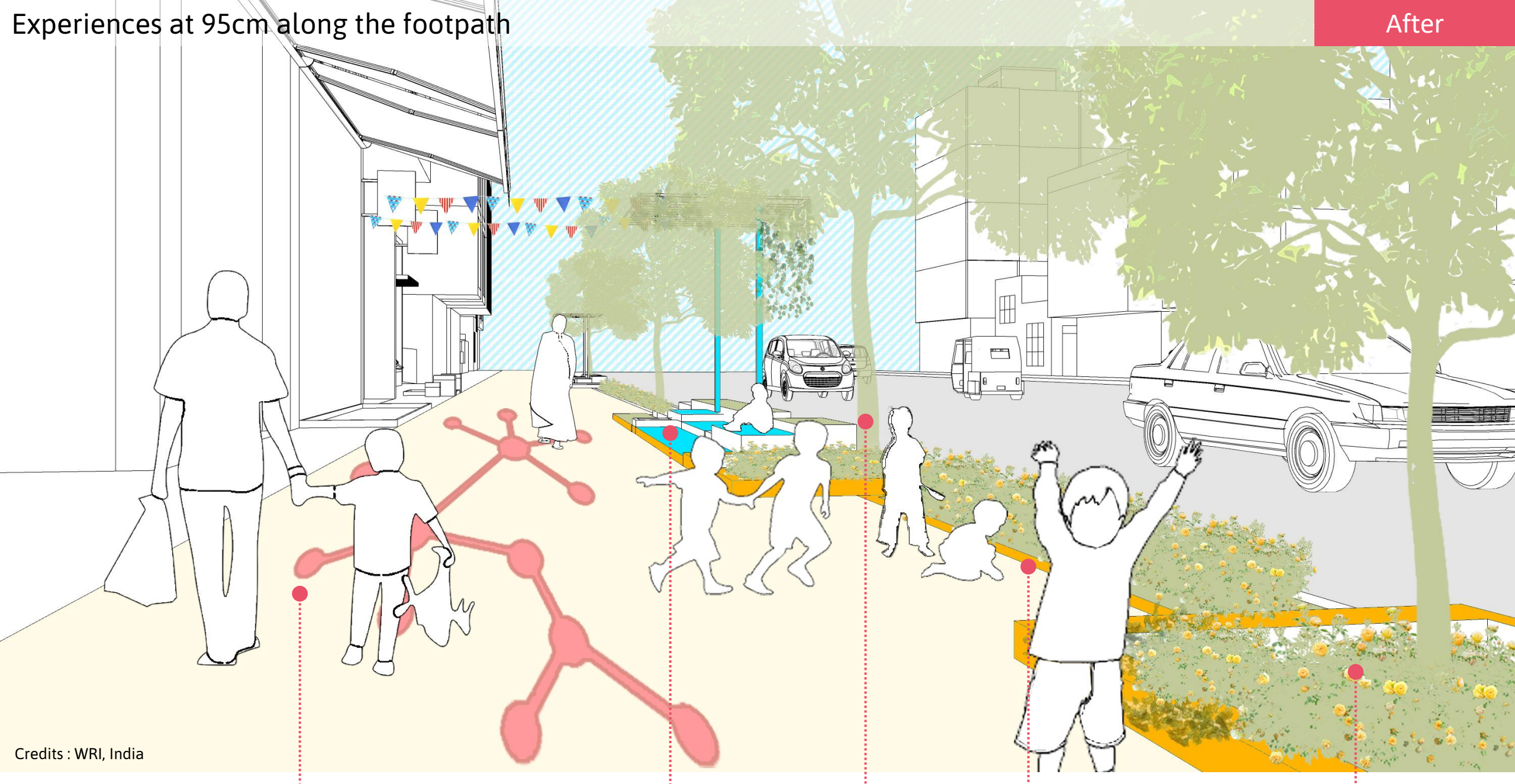


Exposure to vehicular exhaust at child's height risks their health



# Experiences at 95cm along the footpath

After



Credits : WRI, India

Colourful patterns as informal wayfinding

Shaded seating with playful elements to enable interactions

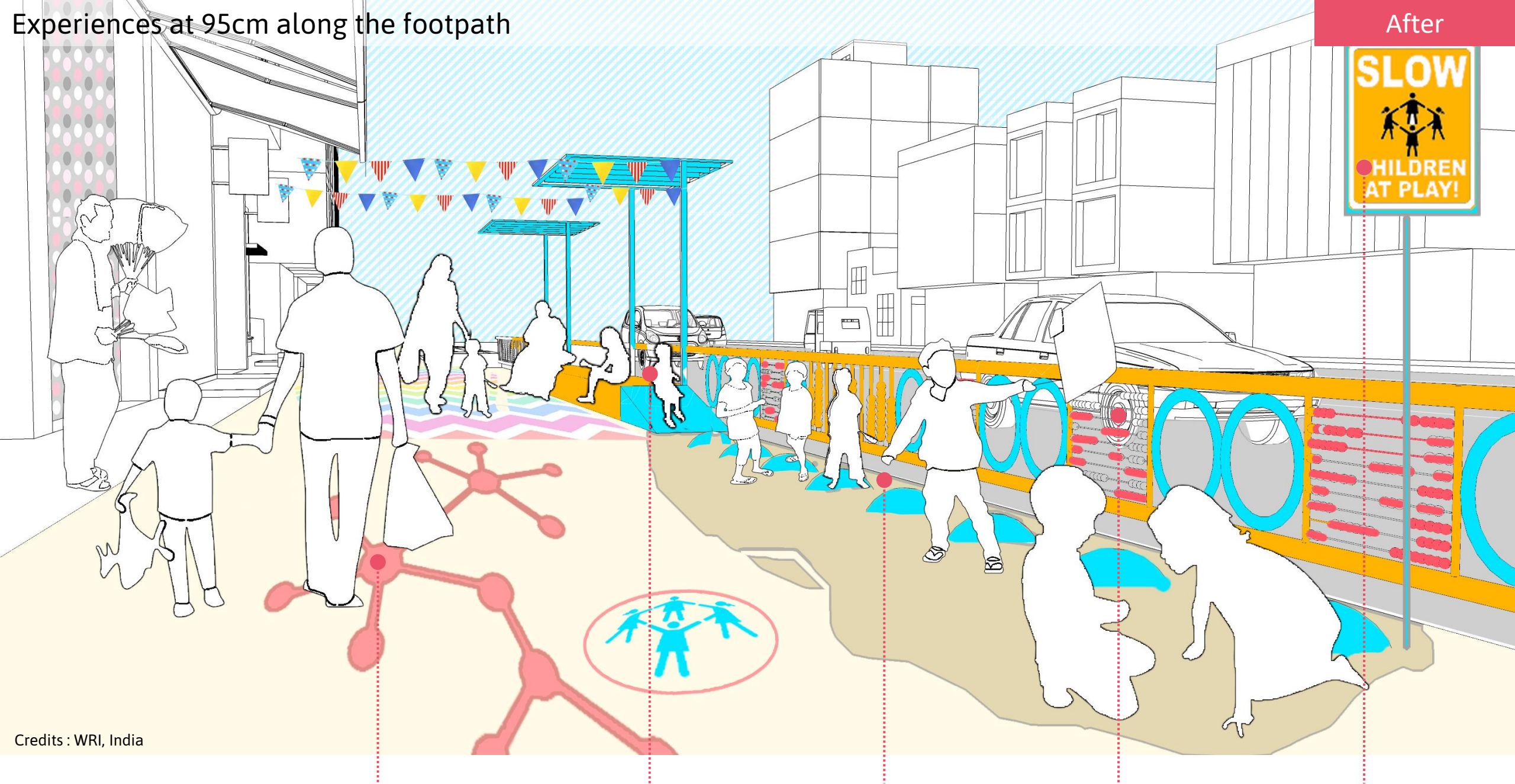
Shading trees for thermal comfort along footpath

Variety of plants and flowers for young children to engage

Thick plantation to protect ITCs from vehicular exhaust



# Experiences at 95cm along the footpath



After



Credits : WRI, India

Colourful patterns as informal wayfinding

Shaded seating with playful elements to enable interactions

Unstructured play areas with sand pits, steppingstones acting as pause point

Handrails as buffer with playful designs to stimulate sensory experience

Interactive signage that are eligible to young children



# Vibrant Play Spaces Along the Street

PUNE, INDIA



Photos by ITDP, India



**Reimagine public open spaces for play and recreation**



Credits : WRI, India

Speed limit signage to ensure safer crosswalks

Waiting/resting area near the entrance

Safe entrance for ITCs

At grade pedestrian crossing to ensure safe walking experience





Credits : WRI, India

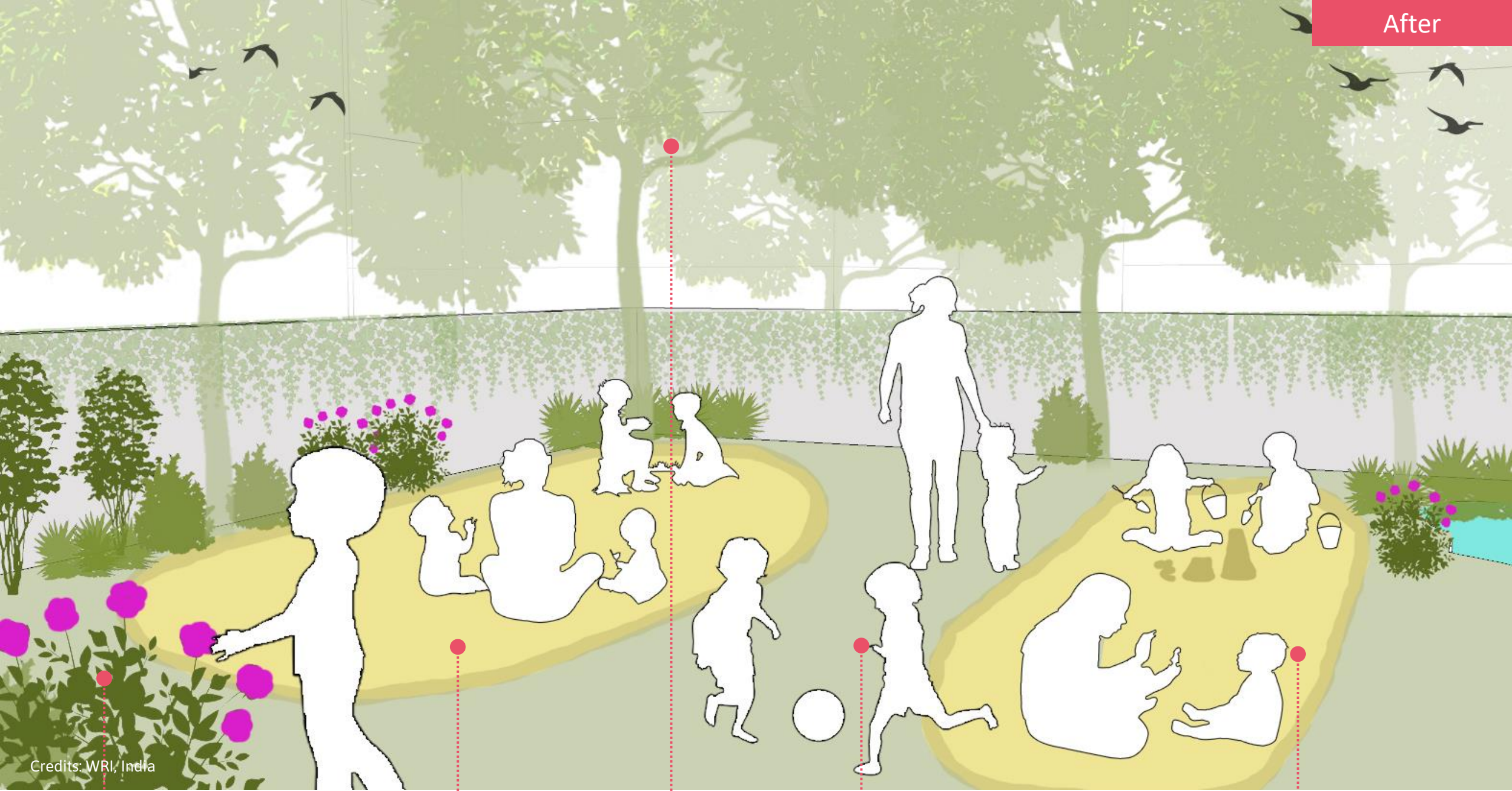
Legible and welcoming entrance

Porous boundaries for better safety

Walkways equipped with comfortable seating at intervals

Natural elements to encourage sensory play





Credits: WRI, India

Flowering plants at young children's height for enhancing sensory experiences

Sand pit to facilitate unstructured play

Shaded areas for thermal comfort

Opportunities for free and flexible play

Opportunities for healthy interactions such as story telling





Credits : WRI, India

Play equipment that develop gross and fine motor skills

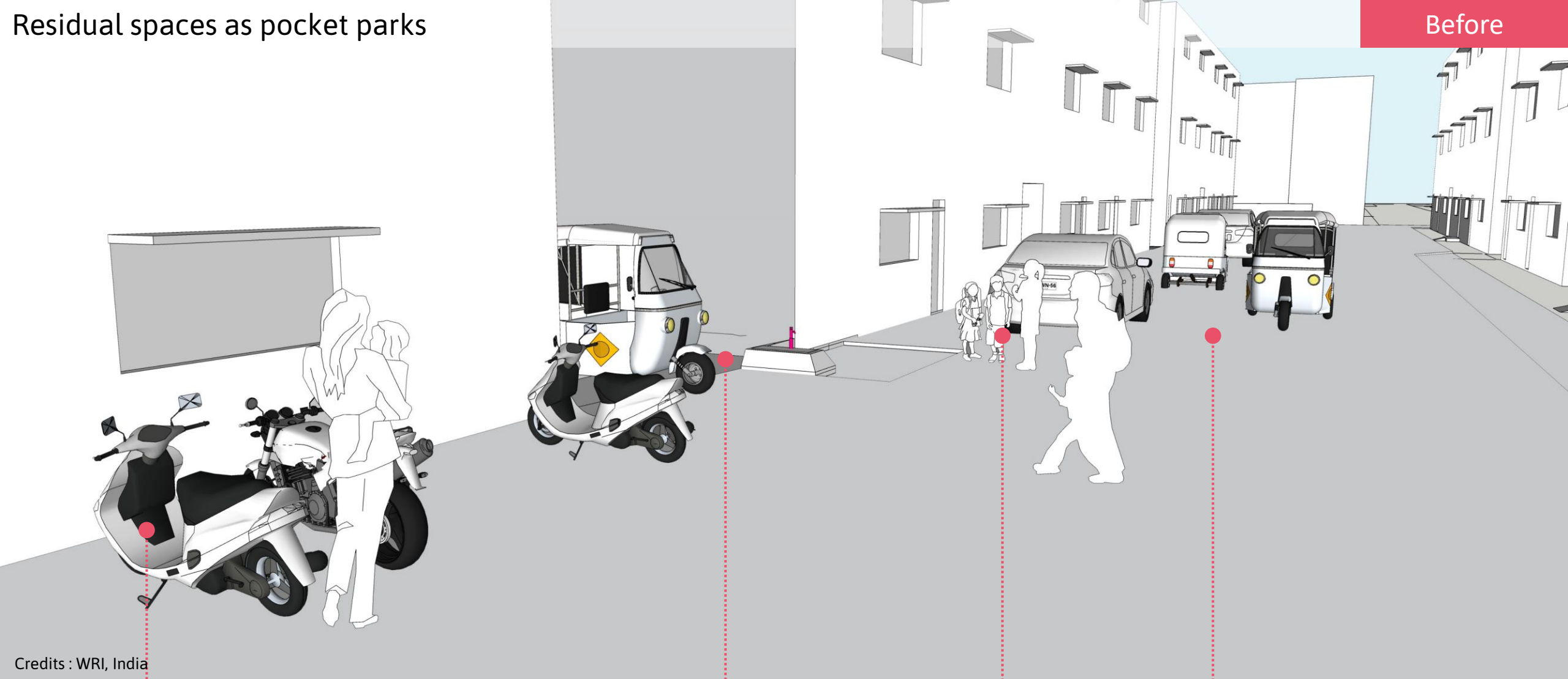
Green mounds and boulders for free play

Clear and legible wayfinding

Access to natural play areas such as water fountains

# Residual spaces as pocket parks

Before



Credits : WRI, India

Haphazard parking poses danger to caregivers with young children

Dark, unused alleys create unsafe environment for ITCs

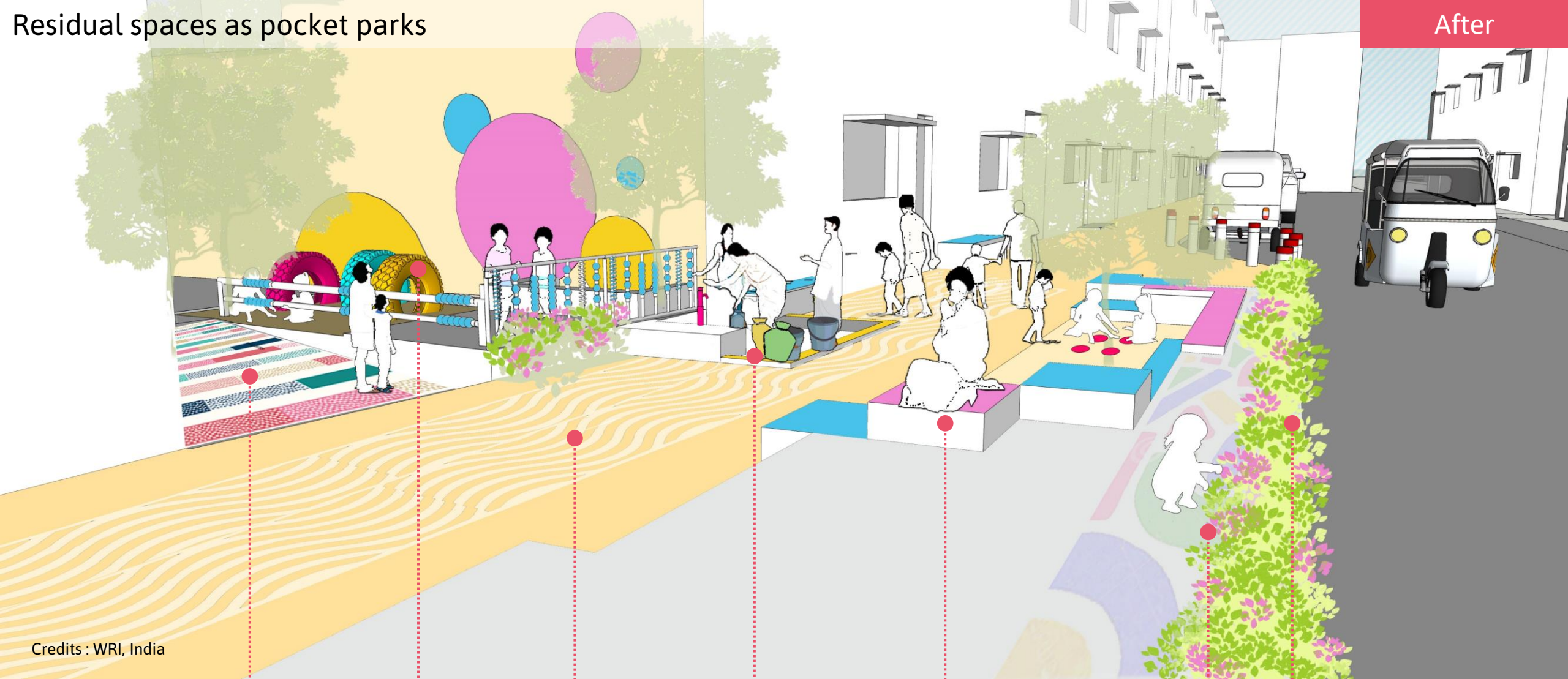
Lack of play and rest opportunities for young children

No dedicated footpath and buffer between walking area and carriageway makes is unsafe



# Residual spaces as pocket parks

After



Credits : WRI, India

Unused spaces between buildings converted into pocket parks

Play equipment that suits young children

Dedicated footpath with engaging surfaces

Clustering activities to enable caregiver interactions & eyes on street

Rest and play opportunities that enable interactions between ITCs

Variety of plants for to improve microenvironment

Continuous buffer to protect ITCs from vehicular traffic



# Dumping ground to creative and sensory play

PROJECT CHAAK – NEW DELHI, INDIA



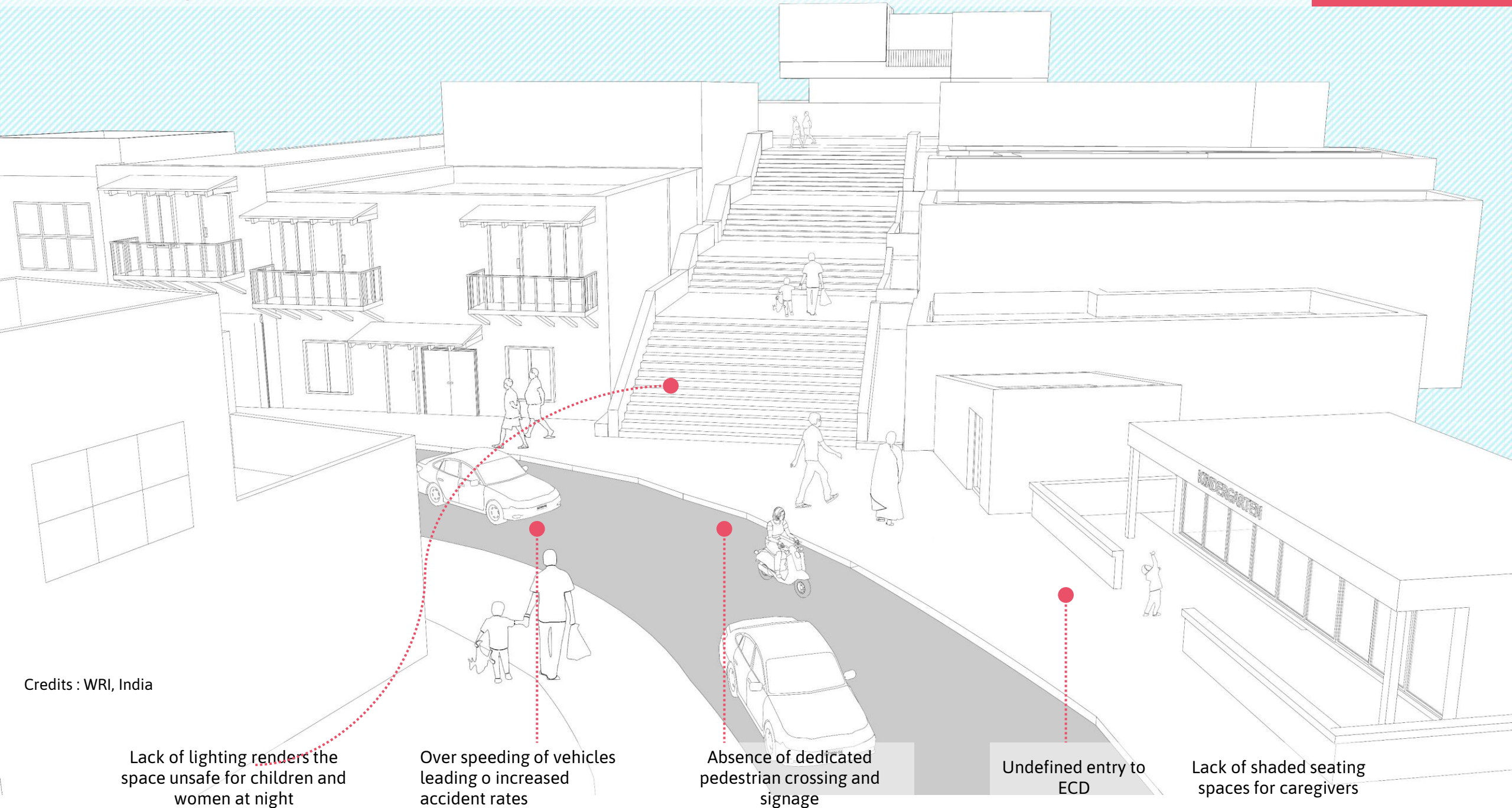
Photo via Project Chaak, Facebook page



**Improved access to early childhood services**

# Access leading to ECD facilities in hilly areas

Before



Credits : WRI, India

Lack of lighting renders the space unsafe for children and women at night

Over speeding of vehicles leading to increased accident rates

Absence of dedicated pedestrian crossing and signage

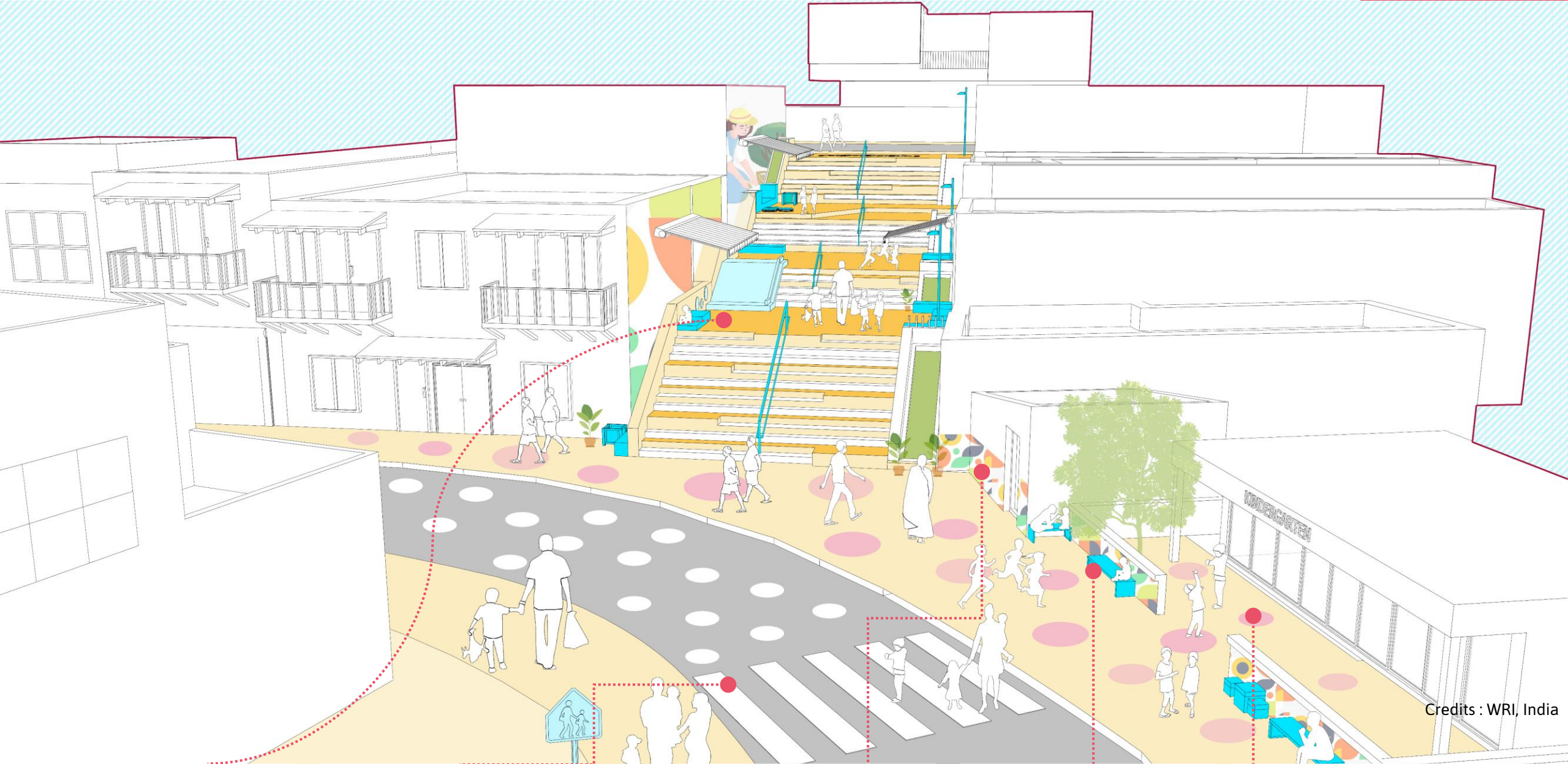
Undefined entry to ECD

Lack of shaded seating spaces for caregivers



# Access leading to ECD facilities in hilly areas

After



Active and vibrant public access space with adequate lighting

Dedicated Pedestrian crossing with signage marking pedestrian zone

Murals on walls for engaging young children enroute school

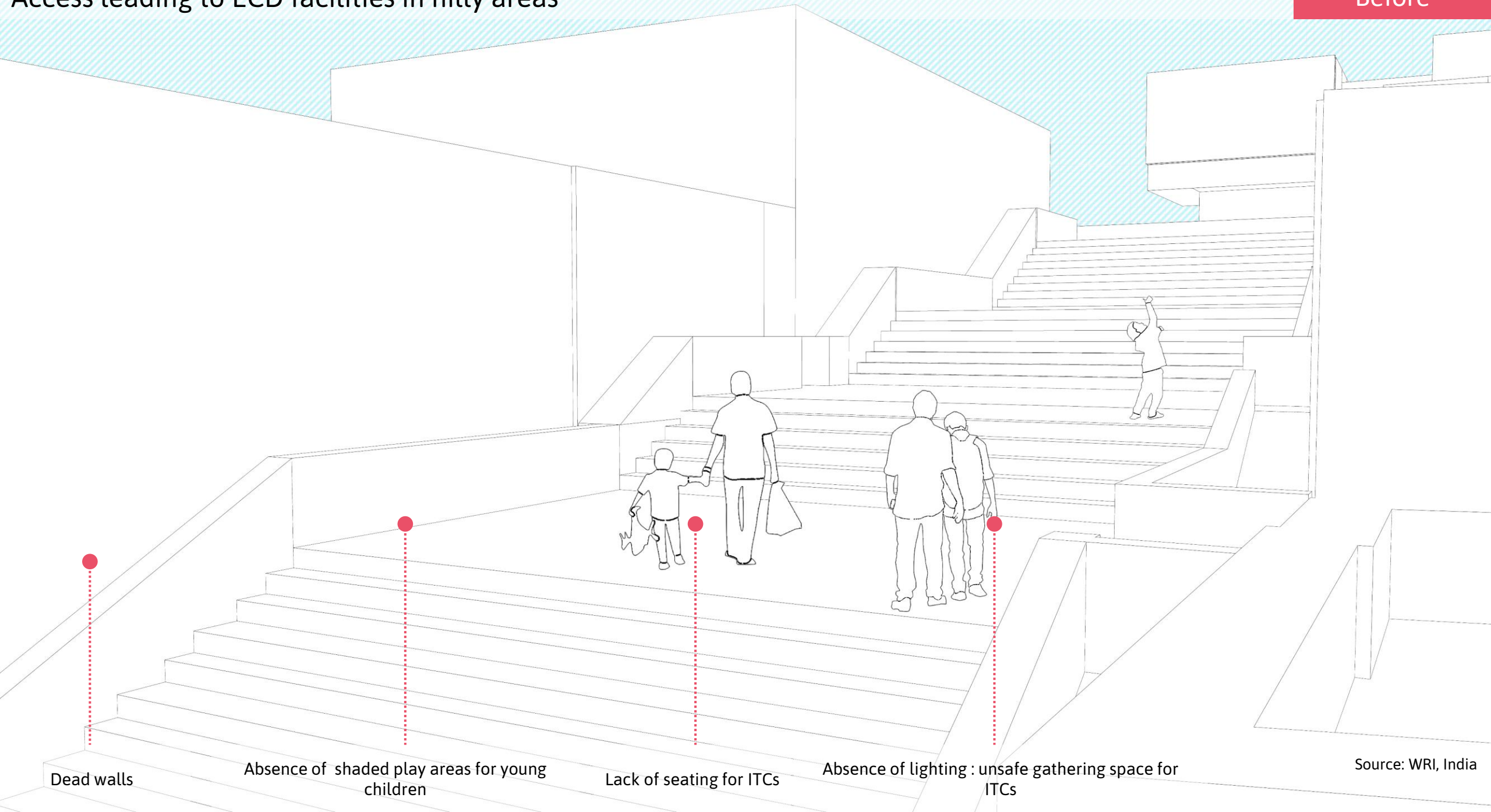
Shaded seating spaces for ITCs

Entry to ECD highlighted with colorful patterns

Credits : WRI, India

# Access leading to ECD facilities in hilly areas

Before



Dead walls

Absence of shaded play areas for young children

Lack of seating for ITCs

Absence of lighting : unsafe gathering space for ITCs

Source: WRI, India





**Adapt public spaces with early childhood amenities**



# Adapting public transit spaces with early childhood amenities



Credits: WRI, India

Safe crossing highlighted for easy access to bus stop

Bus stop zone demarcated from footpath areas with bollards and colourful surface

Well-lit, shaded waiting area with seating at various heights

Feeding and diaper changing station along with restrooms

Sufficient queuing spaces

Bio-swales to capture surface runoff

Solar panels installed on the roof

Legible signage and info boards

# Making transit playful through art and installations

LEXINGTON, USA | MELVILLE, AUSTRALIA



Photos by Lexington Downtown Development authority via Kaboom



# Breastfeeding Booths

Location: Palghar railway station



Source: <https://www.shethepeople.tv/news/palgha-railway-station-baby-feeding-centre/>  
[https://csrbox.org/India-CSR-projects-proposal\\_Child-Help-Foundation\\_Eradicating-hunger,-poverty-and-malnutrition,-promoting-health-care,-sanitation-&-safe-drinking-water\\_302](https://csrbox.org/India-CSR-projects-proposal_Child-Help-Foundation_Eradicating-hunger,-poverty-and-malnutrition,-promoting-health-care,-sanitation-&-safe-drinking-water_302)

# Key points to remember

Provide **safe and convenient pedestrian zone** around early childhood services

Reduce **speed of traffic** near early childhood services

Make it **easy** for young children and families **to navigate** in their neighbourhood

Enhance **sensory experience** with opportunities to play, interact & rest

Make sure young children and caregivers are **visible** on the street

Provide **safe & clean essential amenities** that serve pregnant women, young children and their caregivers

Create opportunities to **engage with natural elements**

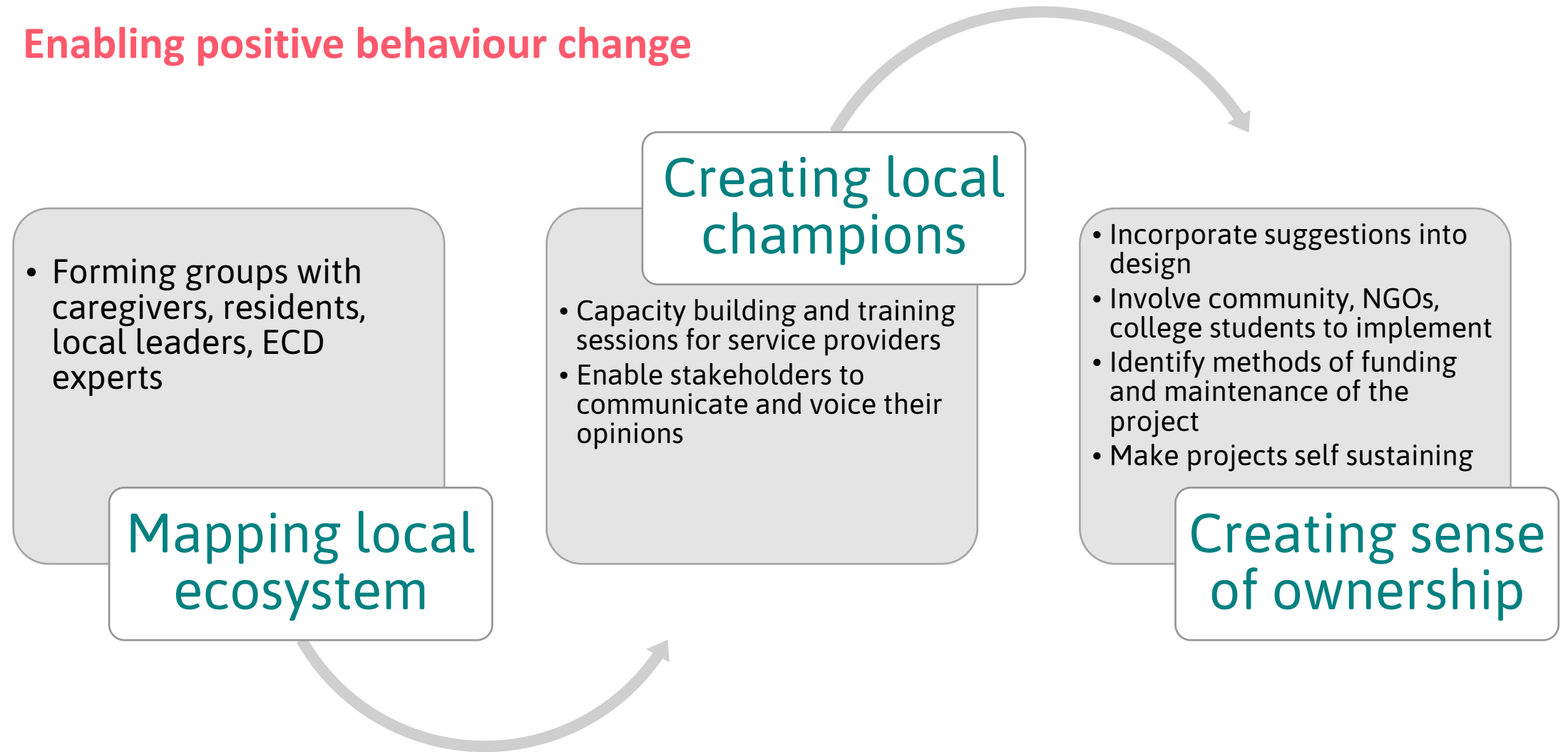
Ensure **comfortable environment** for young children and caregivers to interact and engage

Create **age appropriate play spaces** for young children and caregivers of all abilities



# How to make design work?

Enabling positive behaviour change





# Towards creating healthy environment for young children and families







# Thank you

**Graphics in the presentation by WRI team members:**

Amy Rachel Joseph  
Anushree Patil  
Arunima Sen  
Jashwanth Tej

Kshitija Pendharkar  
Madhura Kulkarni  
Visakha KA