

# URBAN95: CHILD AND FAMILY-FRIENDLY PUNE



# Pune at a glance!



**9<sup>th</sup>** – Most populous city of India

**332 sq. km** – Area under PMC

**11%** 0-6 years population- 3.35 lacs

**4 million** – Population of PMC

**69 billion USD**– GDP of Pune city (7<sup>th</sup> highest in country)

**9 sq.m.** per capita parks/open spaces against norm of 2-3 sq.m.

## ITC focused

**1 zoo, 203 gardens & 197 playgrounds**

**Dispensaries - 41; Maternity Homes - 15; City-level Hospitals - 03.** (IPD=20; OPD=49 including neonatal care 03)

**143 balwadis** run by PMC;

**943 Anganwadies** by W&CD department



Cultural capital of Maharashtra with well established manufacturing, glass sugar, forging and IT industries that provide employment to more than 8.25 lacs



**IF YOU COULD EXPERIENCE  
THE CITY FROM 95cm – THE  
HEIGHT OF A 3-YEAR-OLD –  
WHAT WOULD YOU CHANGE?**

Focus on the younger kids, because they have specific and heightened needs and to fulfil them allows us to design, develop policies and plan better cities and neighbourhoods, And if a city works for this demographic population, it can work for everyone else.

# TO MAKE A CHANGE REQUIRES AN INTER-SECTORAL EFFORT



To make lasting change in the landscapes and opportunities in Pune that shape the crucial first 5 years of children's lives, for those who care for them, and for everyone.

## Memorandum of Understanding

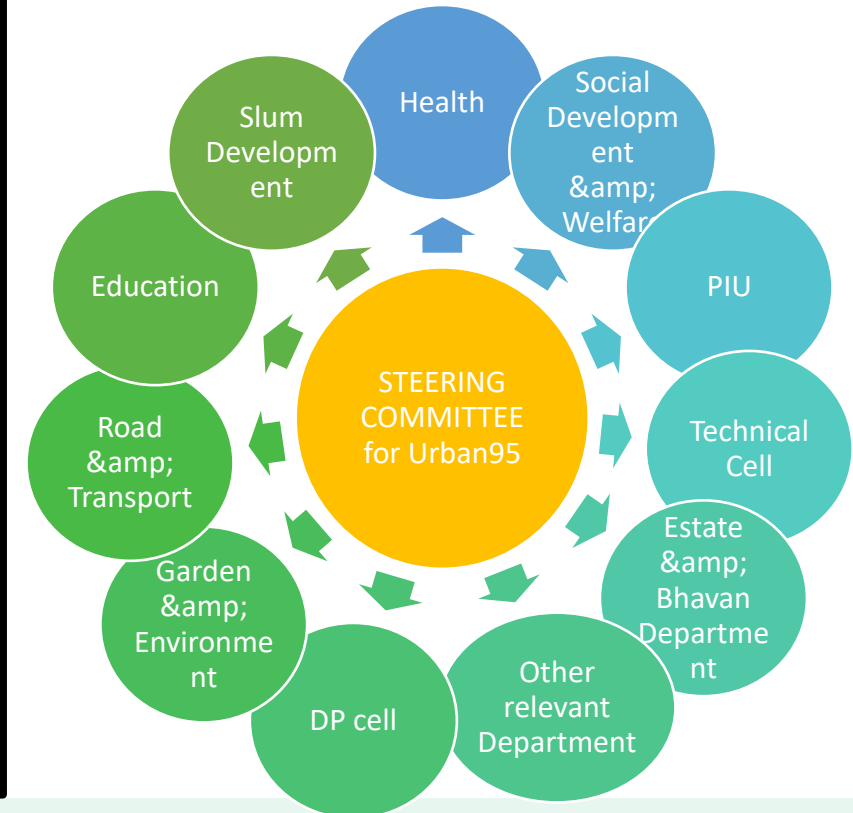
(MoU)



**Bernard  
Van Leer  
Foundation  
(BvLF)**

**Pune  
Municipal  
Corporation  
(PMC)**

March, 2018



Key components

### 01 Policy and Planning

Desk research and initial consultations

Review of policy and planning documents from ITC lens

Baseline study

City level action planning

### 02 ITC Interventions

Tactical interventions

Pilot Projects

Development of safety guidelines for children in the city

Development of city guidelines for day care centres

### 03 Capacity building and knowledge dissemination

Training workshops

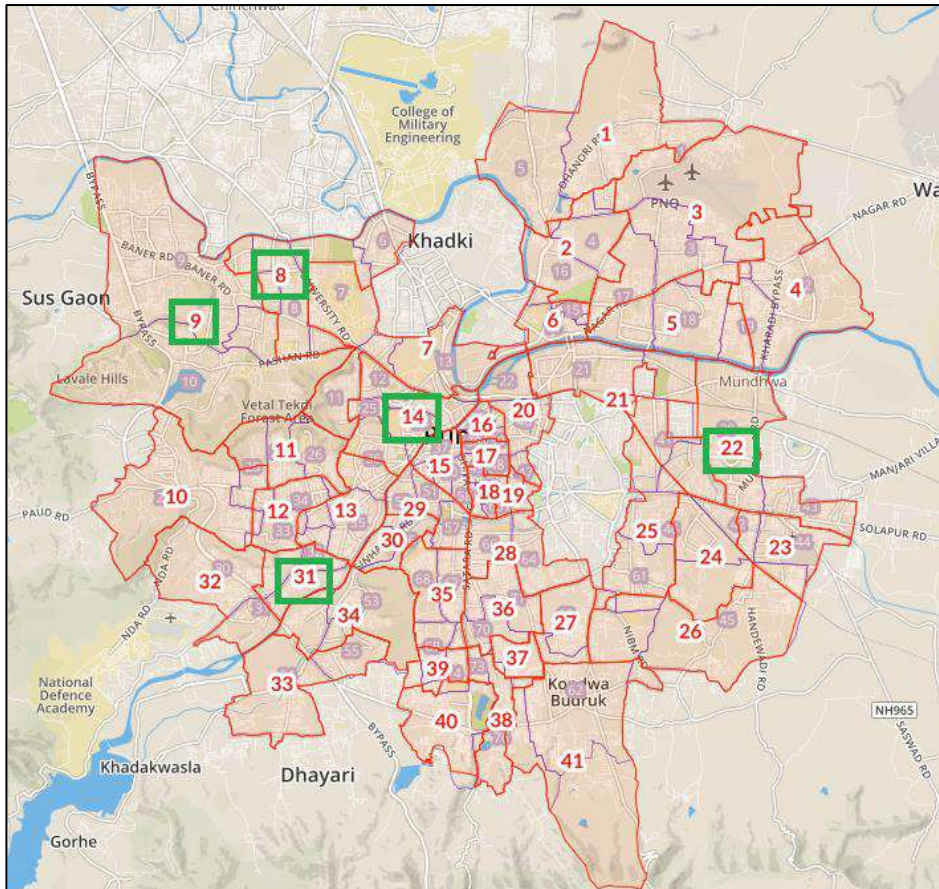
Facilitating Exposure trips

Peer-to-peer learning workshops

Documentation of case studies

# Overview of Baseline Assessment

To gain insight into the *current situation, needs, issues and challenges of young children, and their caregivers* in the city of Pune.



## Methodology

Quantitative Study

Qualitative Study

HH Surveys

Key Informants Interviews

FGDs



397



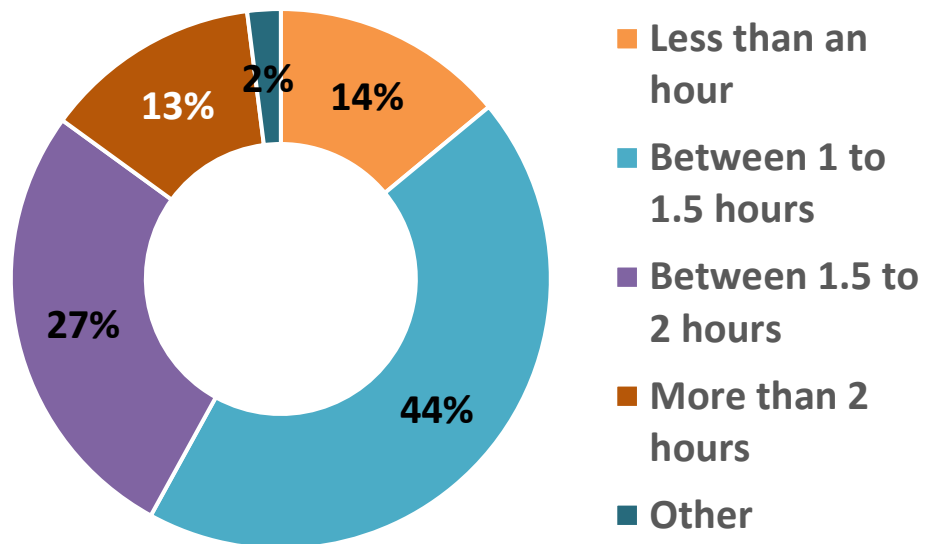
22



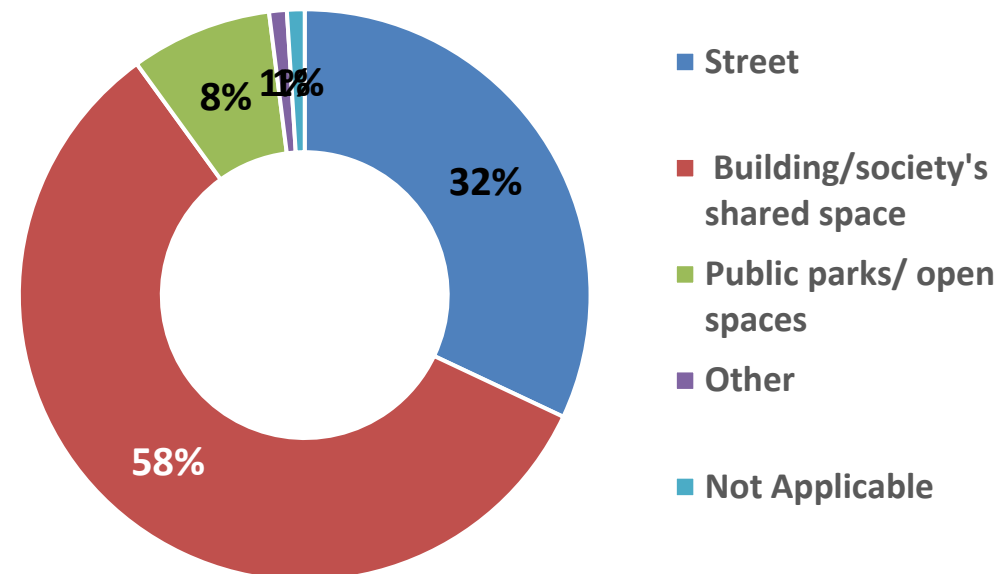
10

Open and green spaces

How much **Time** is spent by the young child playing outdoors



**Place** where young children go for outdoor play

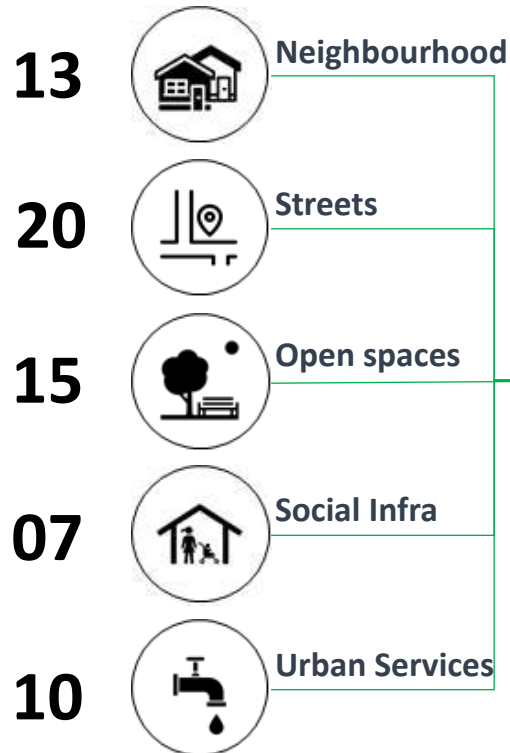


- Significant time is spend by the young children outdoors
- The majority of young children (~58%) play in their building’s compound or society’s shared space.
- As it is a safer environment perceived as compared to streets where there will be vehicular traffic and less in parks as maybe the connectivity to parks might not be appropriate

# Infant Toddler Caregiver ITC Data-Gap Analysis

To gather, evaluate and monitor data set related to infant, toddler and caregivers by government agencies involved in planning, development, provisioning and management of services either at ward or city level on the 65 ITC indicators as part of ITCN framework.

## ITC Indicators



## Data Analysis & Evaluation

### Data Gap Analysis

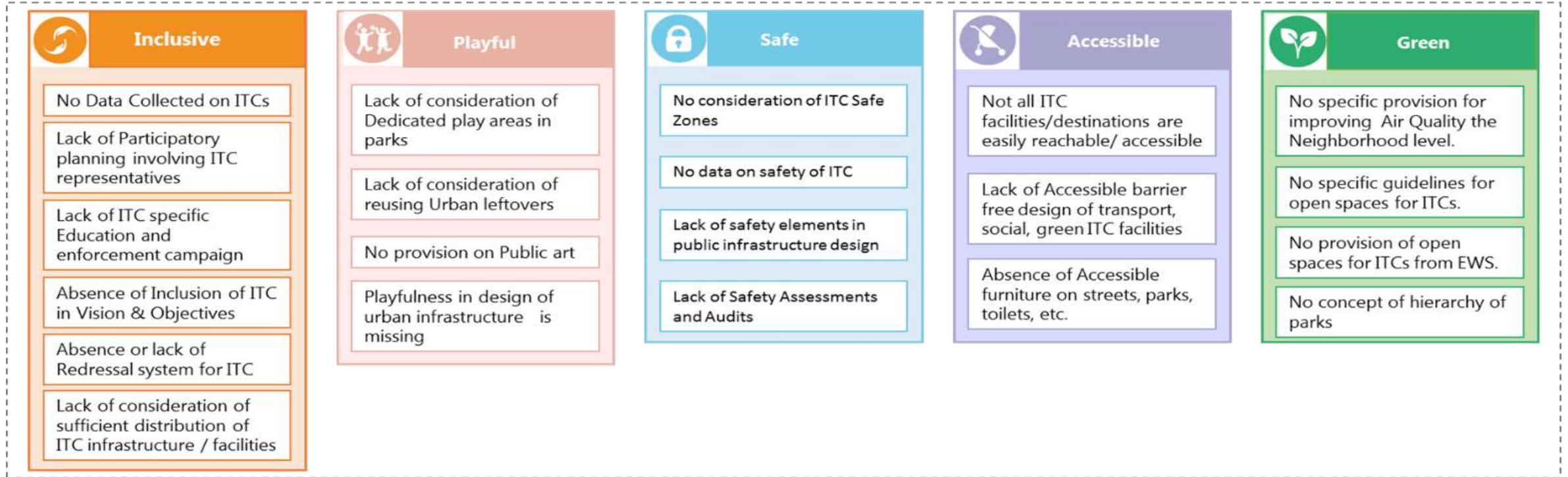
- Data directly available
- Data available but limited in nature
- Data unavailable

### Updation/ Adaptation of evaluation and monitoring metrics to Pune City

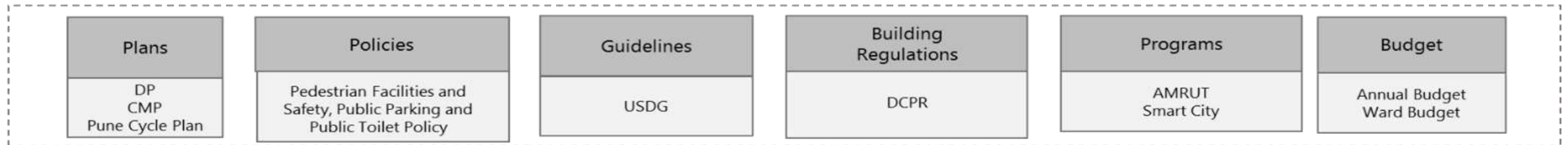
- Existing Indicator
- Modify Indicator
- Remove Indicator
- New Indicator

# Policy Review from the point of view of ITC requirements

## Common Gaps for each ITC objectives



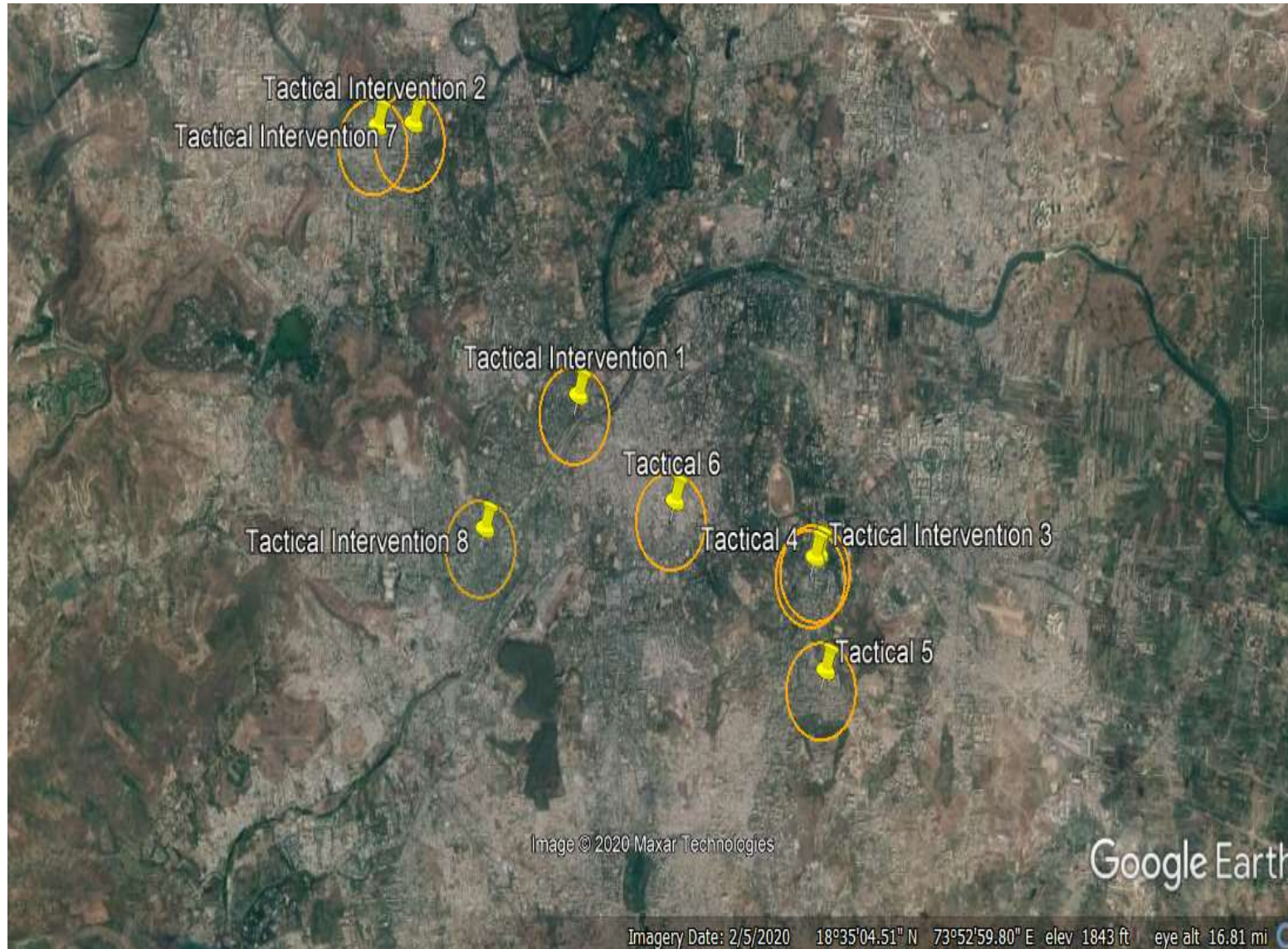
## To be Integrated within Existing planning and policy framework



For a Child Friendly Pune



# Locations of Demonstrative Interventions in Pune City



## Demonstration with

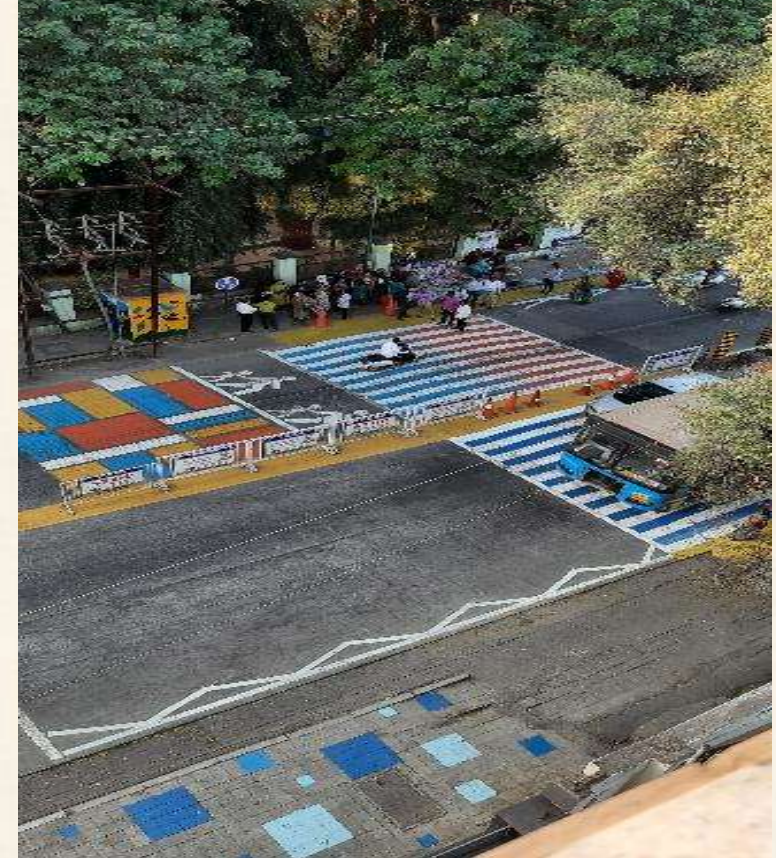
- **Garden & Environment = 2**
  - **Road & traffic (Mobility) = 2**
  - **School & Anganwadi = 2**
  - **Hospital & Health Post = 2**
- Pilot projects (07 in process)**

**Shivarkar Road, Day Care centre,  
NIBM park, Tingarenagar  
Lighthouse, Raje Shivaji Garden,  
Indira Model School**

Repurposing Street space into an In-street Playscapes in front of Anganwadi 92



# Intervention Experiences @ Public space – Garden & Road



# Tactical Intervention Experiences @ Sonawane Maternity Hospital - Outdoor Waiting Space

## Location

- Adjoining road is 12m wide, Pandit Jawaharlal Nehru Marg.
- Situated between two slums, Kashewadi and Lohiya Nagar.



## Pre-intervention



Patients waiting outside



Area connecting both entrances to OPD without sitting benches



Unorganized parking



Patient standing outside OPD

# Tactical Intervention Experiences @ Sonawane Maternity Hospital - Outdoor

## Waiting Space

### Solution



Wall painting



Games painted on floor



Playing equipment's provided



Additional seating provided



Civil work, plumbing work and wall painting, supported by PMC's health department and contractor.



Lining out, floor, game, and signages painting by volunteers.

# Tactical Intervention Experiences @ Sonawane Maternity Hospital - Outdoor Waiting Space

## Post intervention



Patients using sitting area



Children playing painted games



Existing 2-wheeler parking was converted into sitting area

# Demonstrative Intervention Experiences @ Anusaya Lonkar Garden - Kids Sensory Element intervention



**Pune Municipal Corporation**  
in partnership with  
**Bernard van Leer Foundation**  
brings you



## KID'S SENSORY PARK



LET'S RE-IMAGINE OUR PARK!



Wall Art



Painting Pathways



Rope Art



Playing the Xylophone

Attractions for children

Come, celebrate the experience with your child, bring forth the child in you and experience together their world through the play of senses!



01 December 2019



10.00 AM onwards

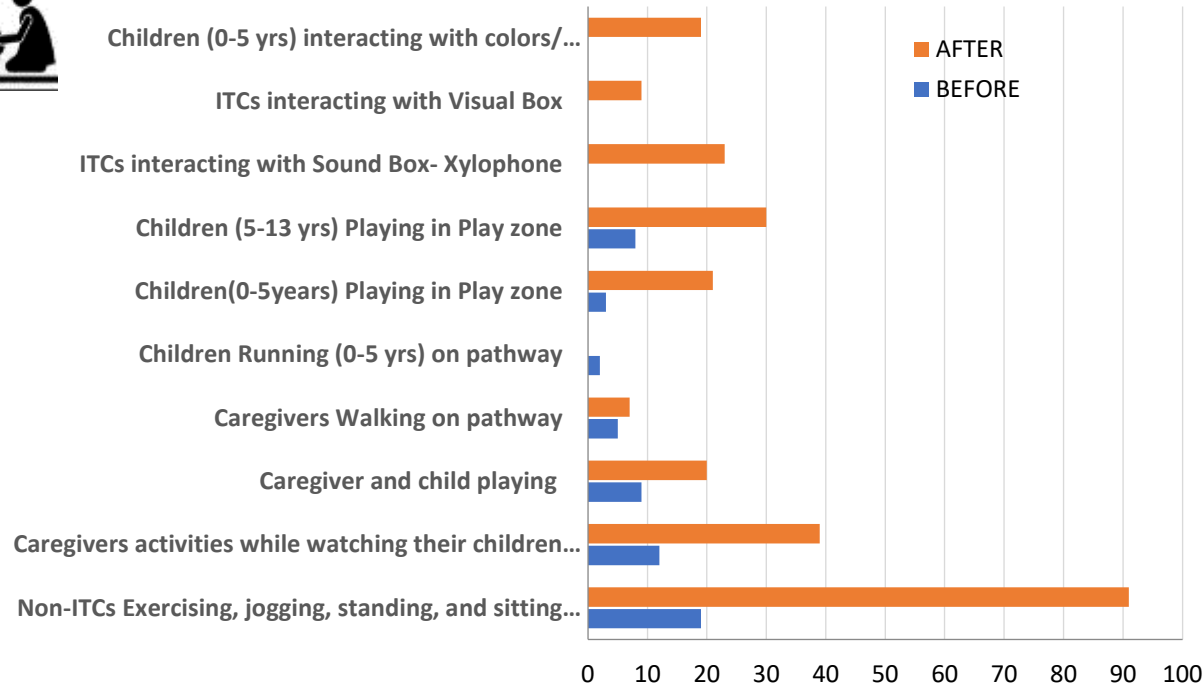


Anusaya Sadba Lonkar Garden,  
Narayan Annaji Shinde Road,  
Salunke Vihar Society, Kondhwa, Pune.

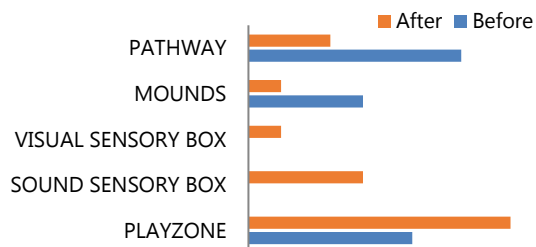




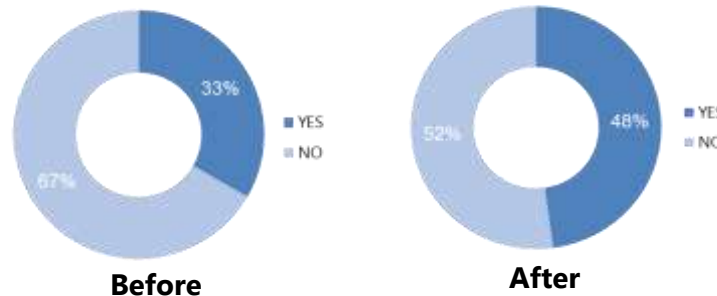
## CONCLUSIONS FROM POST INTERVENTION MONITORING & EVALUATION



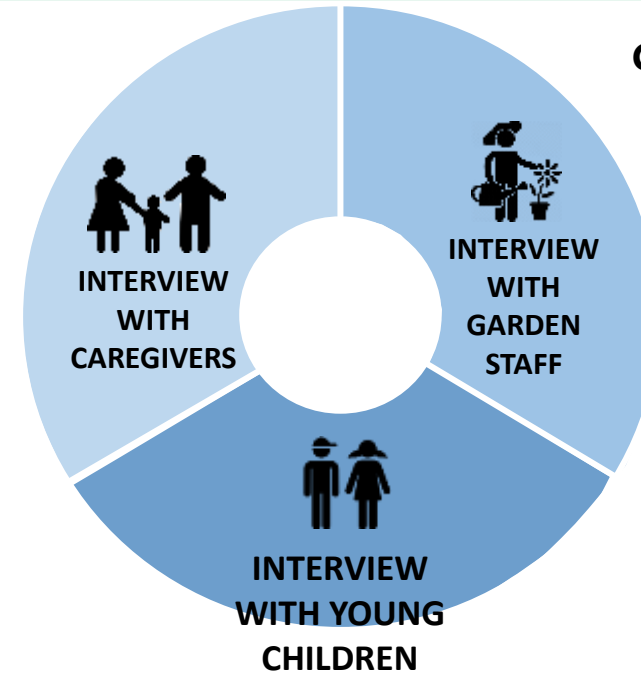
### Where do you and your child spend most of the time while in the garden?



### Do you feel this Garden has adequate space for children to play?



## CONCLUSIONS



- Footfall of people per day to the garden is around 150-200; with 60% being ITC
- 65 % of the users on weekends in the evening are ITCs.
- Accessible to ITCs by walk and by vehicle
- Place ideal for evening play for their kids
- Small and overcrowded most of the times
- Difficult to have a visual supervision
- Lack of space for a designated play area for infants



## HOWEVER, THERE WERE CHALLENGES WHEN WE STARTED

- **Acceptance for a new concept** – This is a new concept for urban planning and design and our conventional design approaches have not looked at young children and caregivers as a user segment. There are limited case studies present in India.
- **Building consensus**- Presence of multiple stakeholders for decision making.
- **Integration within the existing system**- Building processes and guidelines for implementing innovative projects such as approvals is a constant iterative process, as there is no precedence.



A collaborative approach and formation of steering committee has led to quick decision making.

Huge interest from top leadership, middle leadership as well as technocrats makes the difference.

## Way Forward –Scaling Up

- PMC Budget Allocation 2020-2021 ; Plan for 6 pilot project
- Inclusion of Urban95 Principles in Urban street design guideline in policy
- Urbna95 Elements as technical specification in the DSR,
- More Handholding workshops for leaders, Architects & Planners
- Documentation and Dissemination of Learnings



Satara Road



A city that works for young children tends to become a place that works for everyone.

