

Team

Saksham

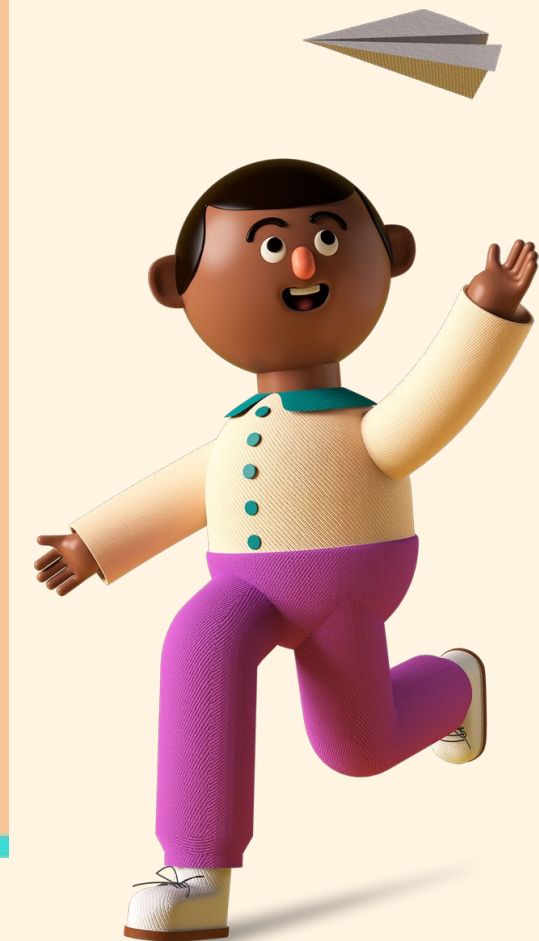
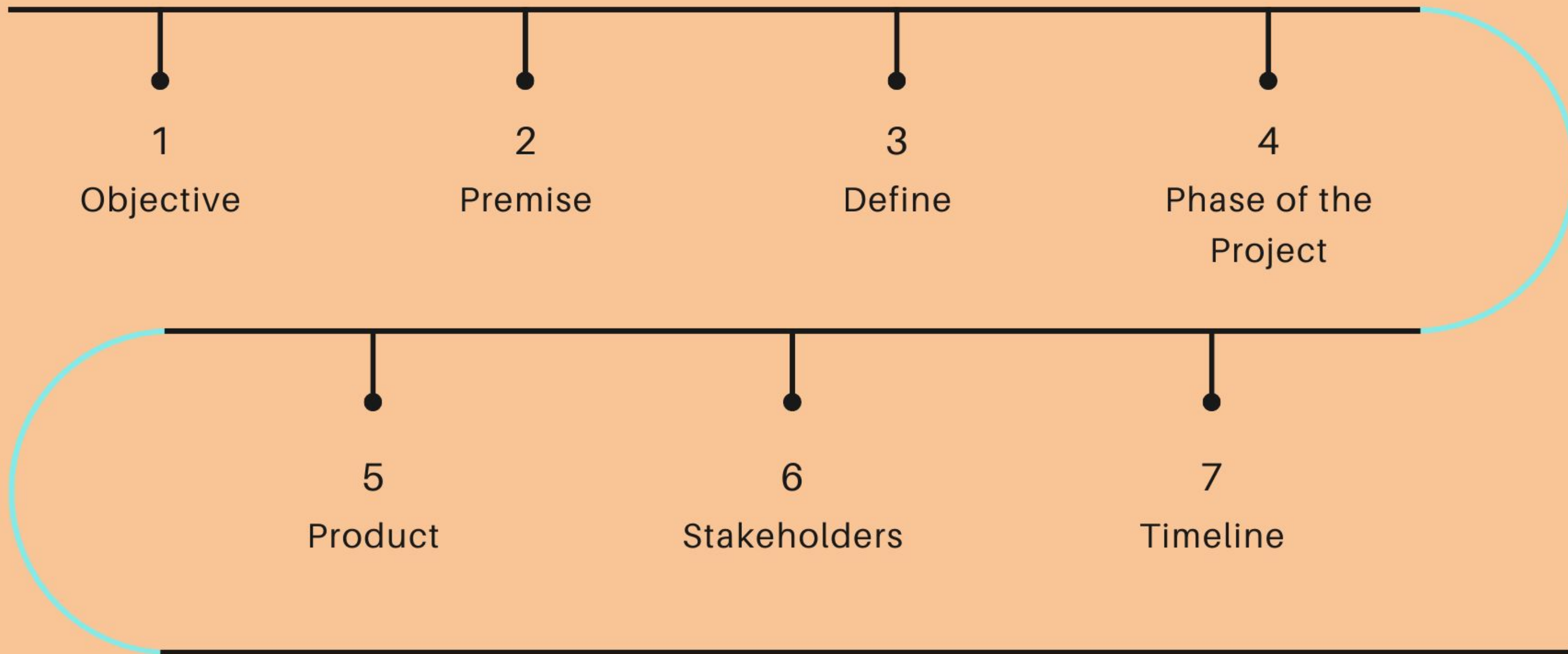
Members: Abhisikha Das
Anupama Bharadwaj
Zara Hasnain

EXTERNAL MENTOR: Shuvajit Payne, Head of
Education, Barefoot College

INTERNAL MENTOR: Dr. Debolina Kundu, Professor,
NIUA



Let's walk together towards our idea





Objective

Objective:
To develop a product for mapping the Socio-Emotional Learning levels of the students of a city.

Input

Static Data:

Name, Age,
Gender,
Parents/Guar
dian

Dynamic Data:

Self-evaluation Data
Activity Based Data
Teacher's Score Data

Output

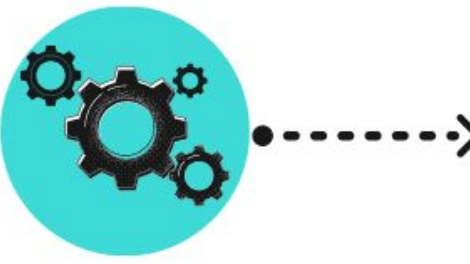
Students' individual performance- for students, parents & teachers

School's overall performance - Parents, School, ULBs

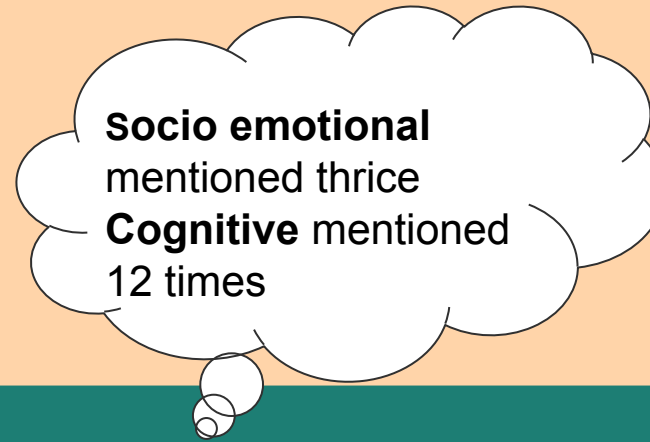
Regional Mapping: Parent's, ULBs

City Index : Govt.

Premise



2 Premise



Socio emotional
mentioned thrice
Cognitive mentioned
12 times

SDG 4

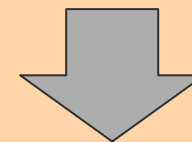
ensure inclusive and equitable quality education and promote lifelong learning

NEP 2020

- Technology Focus
- Development of cognitive capacities
- “School Complex”

74th CAA, 1992

ULBs entrusted with quality education



The fundamental principles that will guide both the education system at large, as well as the individual institutions within it are:

- **recognizing, identifying, and fostering the unique capabilities of each student**, by sensitizing teachers as well as parents to promote each student’s holistic development in both academic and non-academic spheres;

Hybrid Schooling System



3 Define

Hybrid schooling refers to “blended learning” where students get an opportunity to have a combination of both traditional **school** attendances and home-tutoring. It follows **the rotation model** and opens window for **personalised learning**. **During and after pandemic this is going to be a vital mode of learning.**

- **The rotation model.**

Students still attend school but rotate throughout the day between online learning, classroom instruction, group projects, and individual work.

Personalized learning is an **educational** approach that aims to customize **learning** for each student's strengths & needs

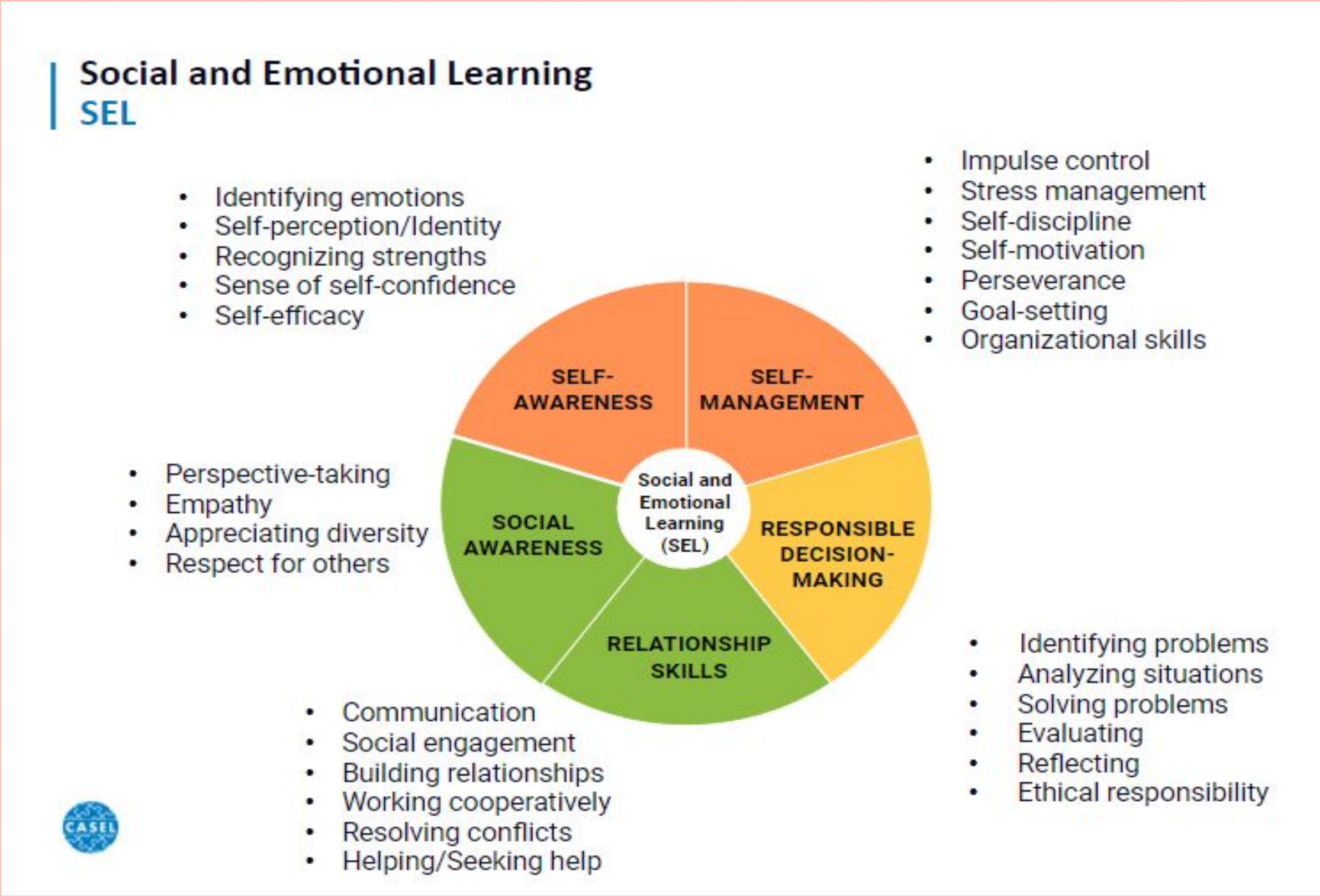


Socio Emotional Learning (SEL)

What does it mean?



3 Define



CASEL* The Collaborative for Academic, Social, and Emotional Learning (CASEL) is a trusted source for knowledge about high-quality, evidence-based social and emotional learning (SEL).



**SAMPLE SIZE: 25% OF THE
SCHOOLS OF A CITY**



**UNIT OF EVALUATION:
INDIVIDUAL (STUDENTS)**

**TARGET GROUP: 7TH STD
STUDENTS**



SCHOOL: HYBRID SCHOOLS

**EVALUATORS: STUDENTS'
,TEACHER (PILOT)**

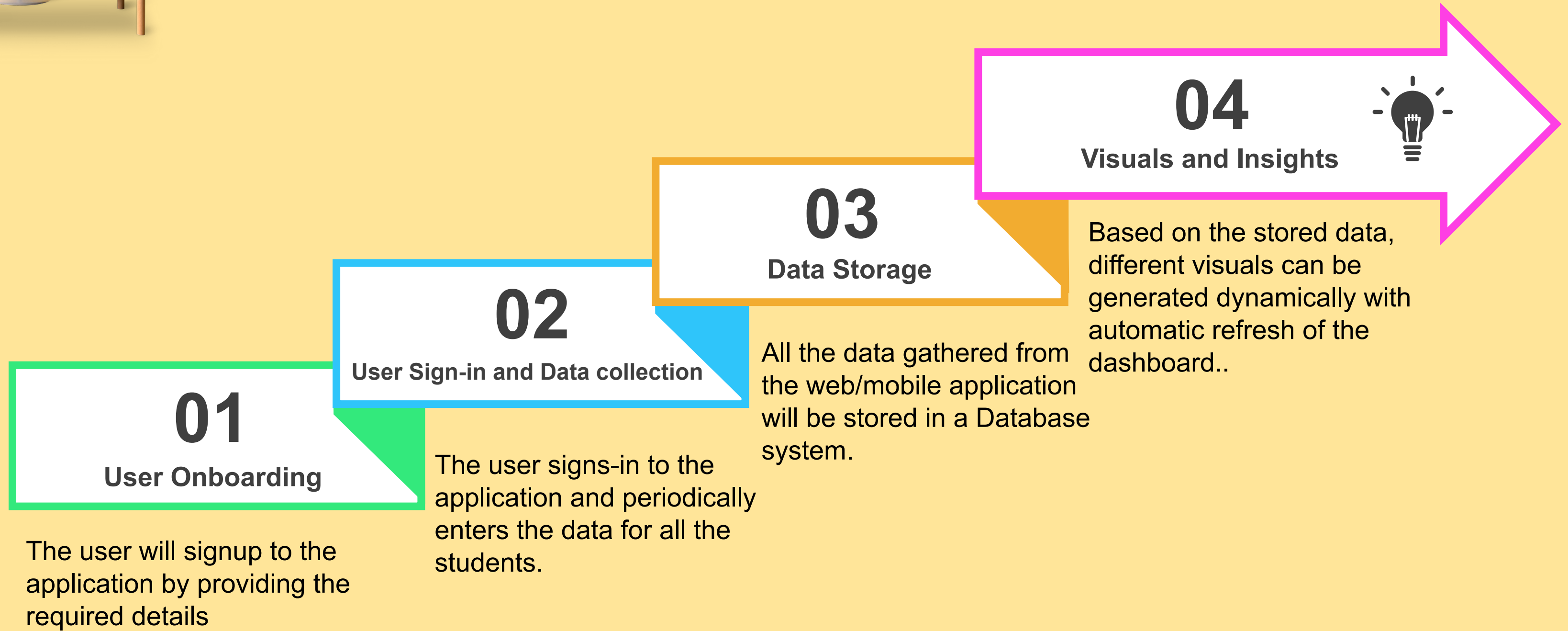


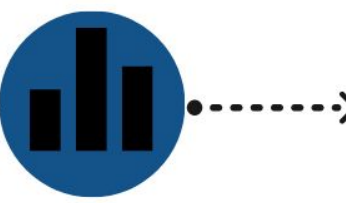
CITY- PUNE





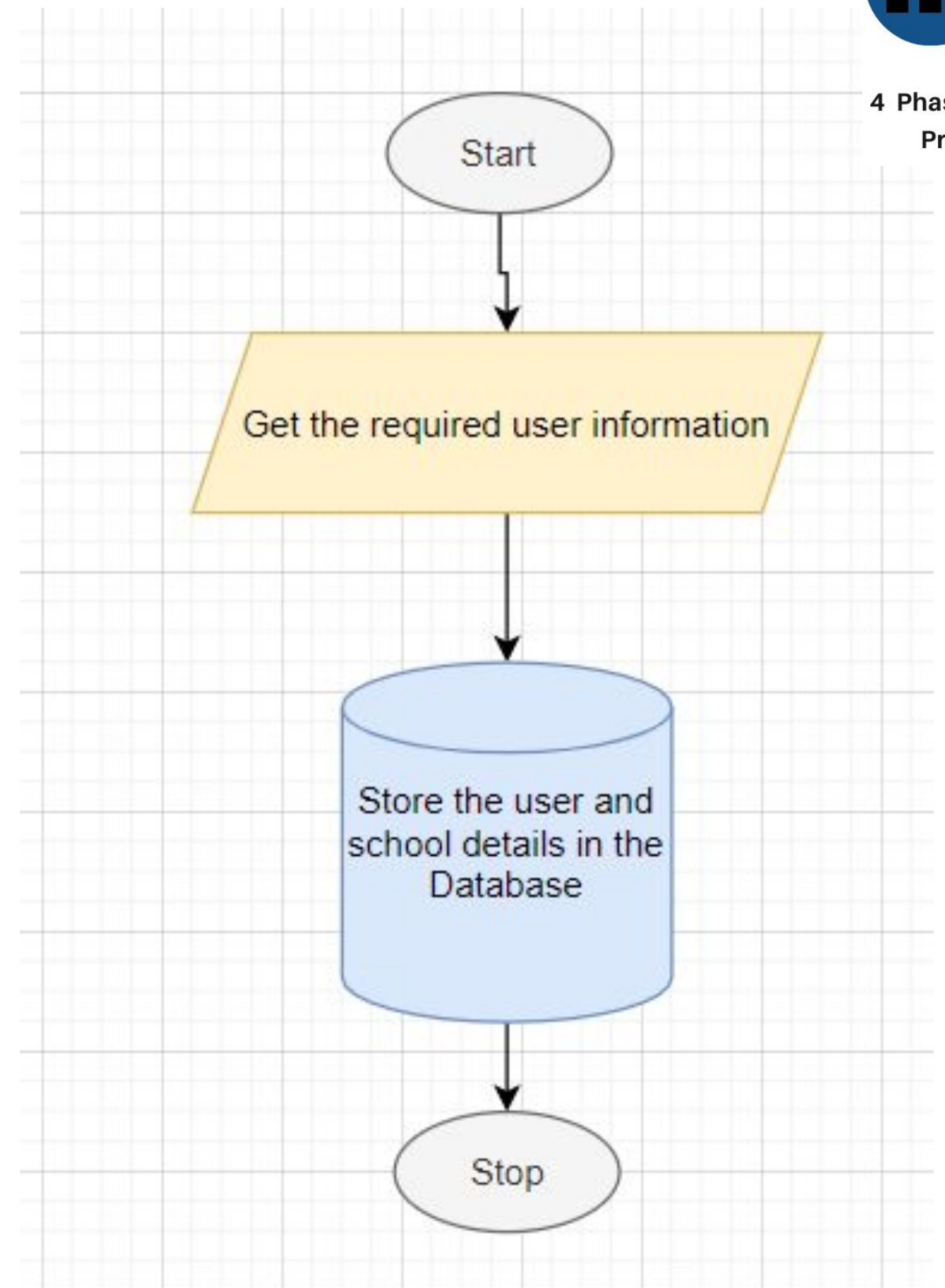
Overall Flow





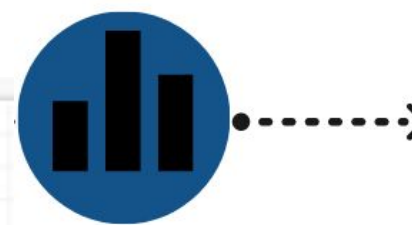
User Onboarding

- User opens the application.
- For new users, there'll be a signup option.
- Various fields like school name, email, city, zipcode etc. will be collected from the user.
- All the user details will be stored in the database and a new user will be created.

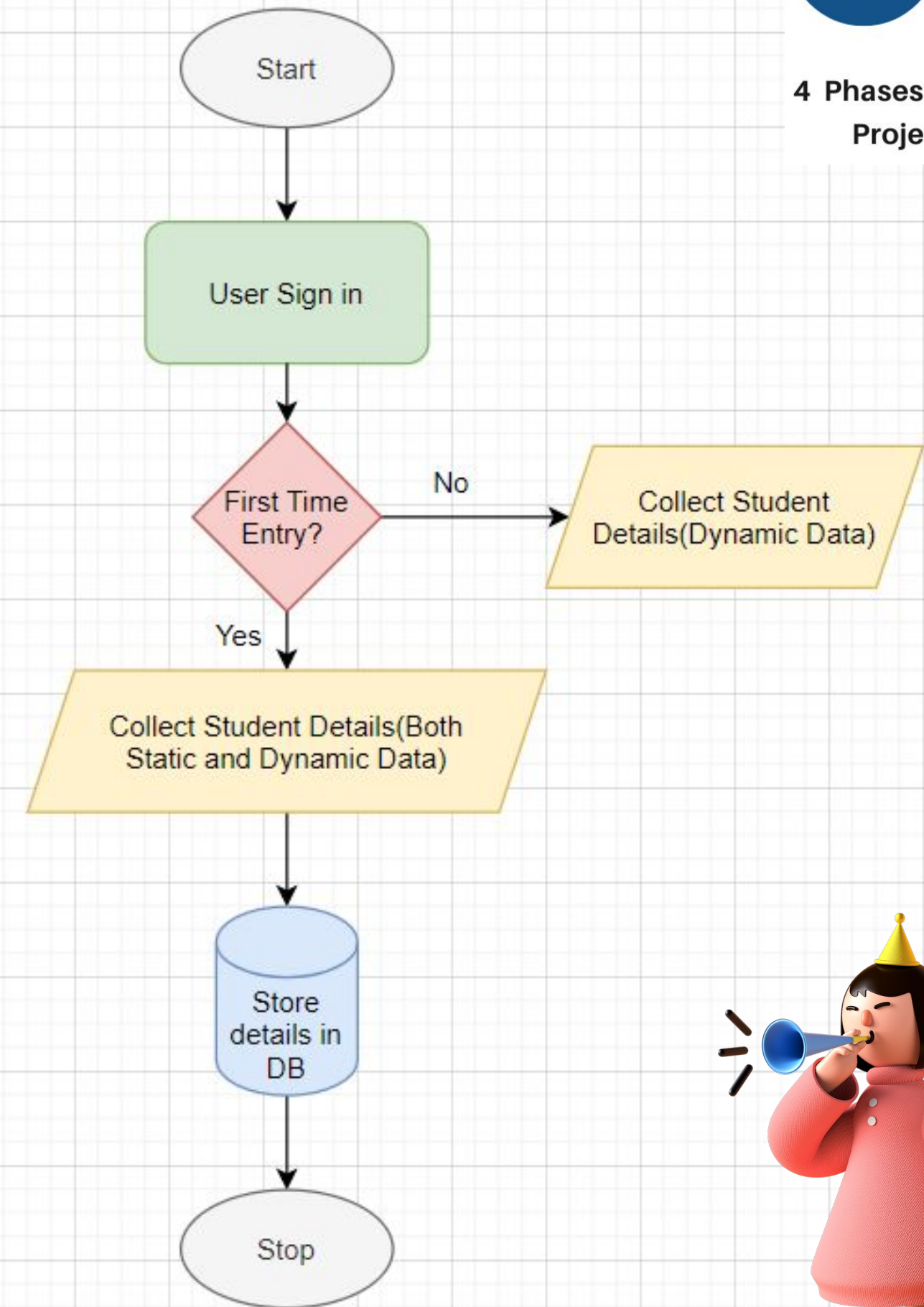


Data Collection

- ❑ User opens the application.
- ❑ For existing users, give an option for sign-in if the user is not already signed in.
- ❑ Check if any student record exists for the school or not.
- ❑ If no, then give options to enter all the details of the student.
 - a) The **static part** consists student name, parents name, gender etc.
 - b) The **dynamic part** consist of the answers to the questionnaire.
- ❑ If yes, only the dynamic part is entered and the static part is auto-populated.
- ❑ Store the details in the database.



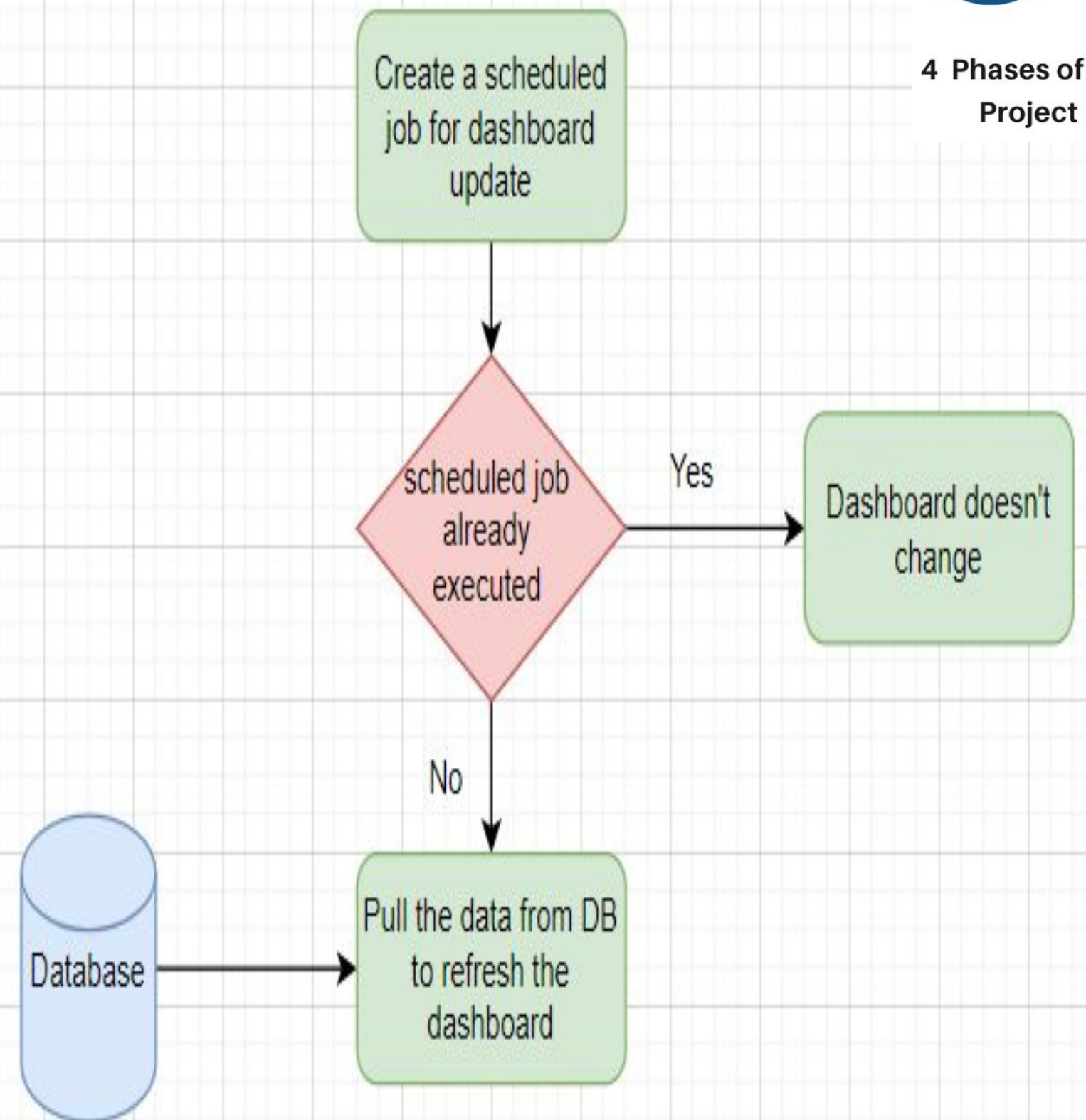
4 Phases of the Project





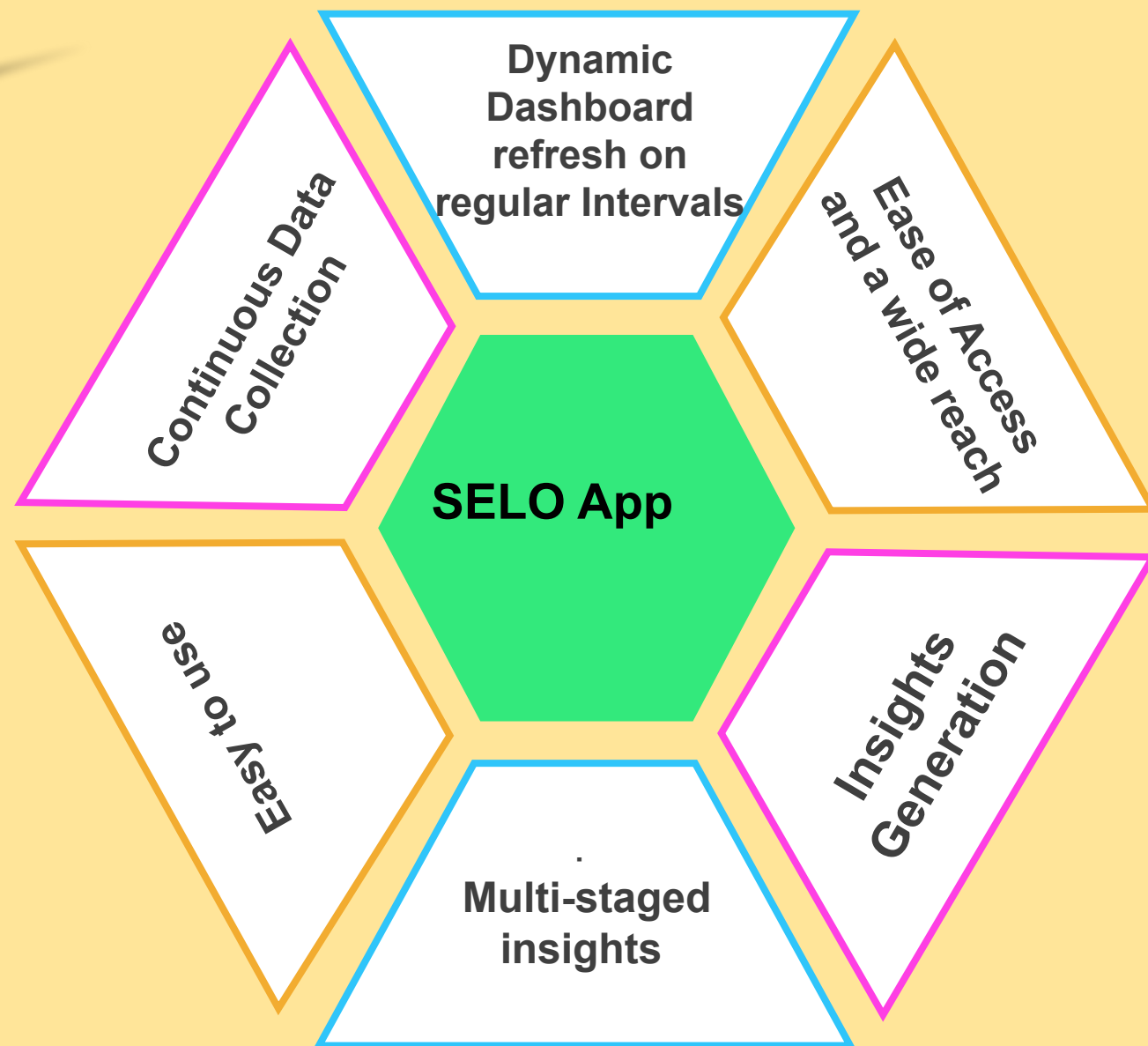
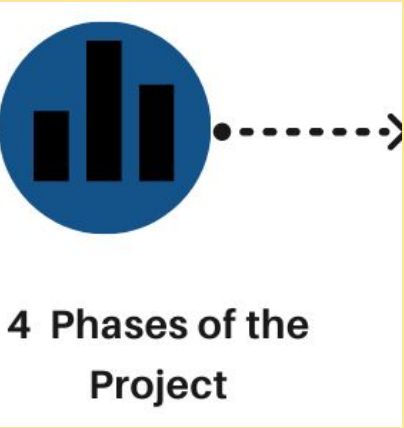
Visuals and Insights

- Create a scheduled job for the dashboard update.
- If the scheduled job has already run at the specified time, the dashboard is in an updated state.
- If the scheduled job has not run, automatically run the job and refresh the dashboard with the new data.
- Custom plots/visuals can be generated based on the parameter selection.





Targeted Features



Dynamic Dashboard

A dynamic dashboard which automatically keeps on refreshing based on the new data collected.



Continuous Data Collection

Data Collected from different institutions on a regular basis



Ease of Access

An easy to use and readily accessible web/mobile application to gather the data.



Insights Generation

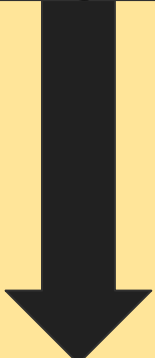
Various visuals and insights can be generated based on custom metric selection



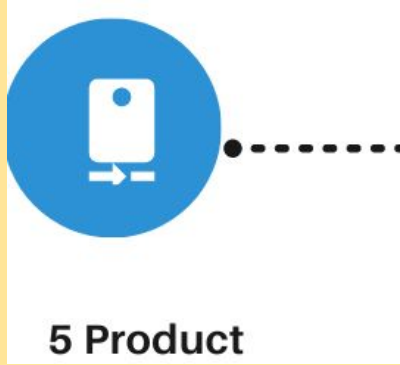
Product Prototype

Static Data

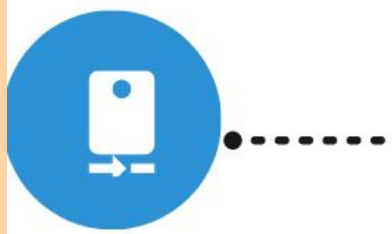
1st Interface : Step to enter useful information for Signing Up



Username & Password generated.



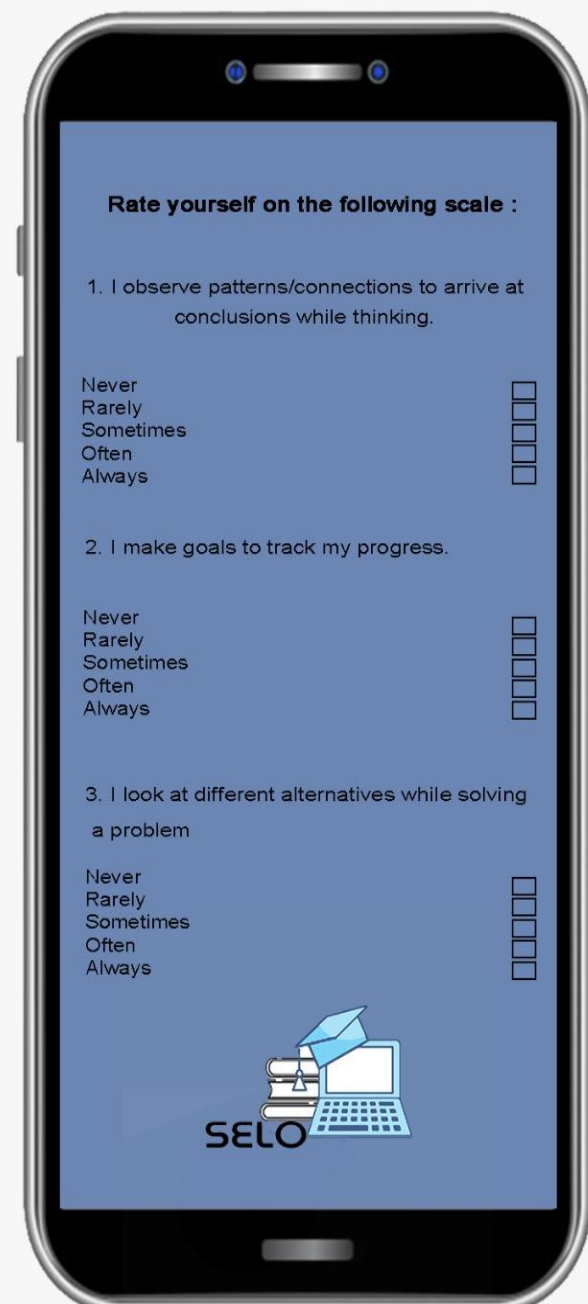
Product Prototype



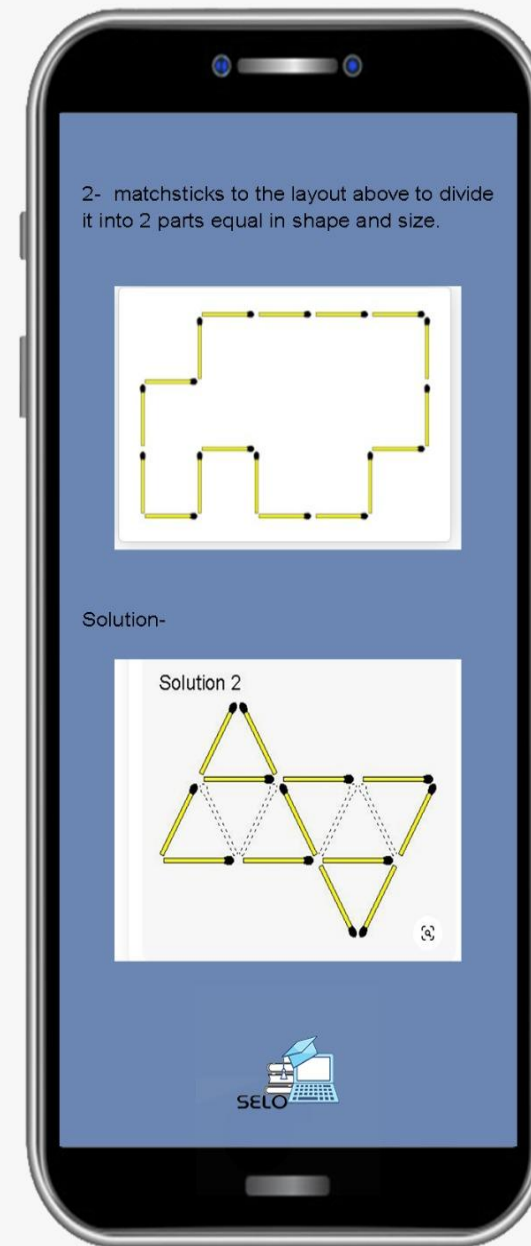
5 Product

Dynamic Data

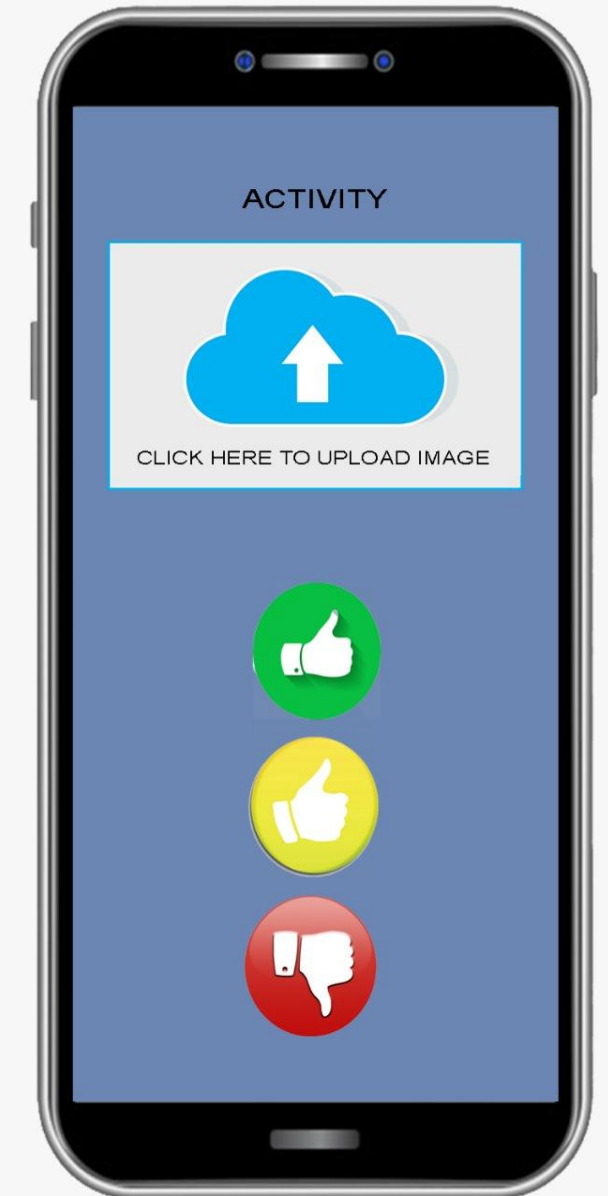
Week 1: Self Evaluation



Week 2 : Puzzle Grid



Week 3 : Teacher's Response



Not So Philanthropic!!



6 Stakeholders

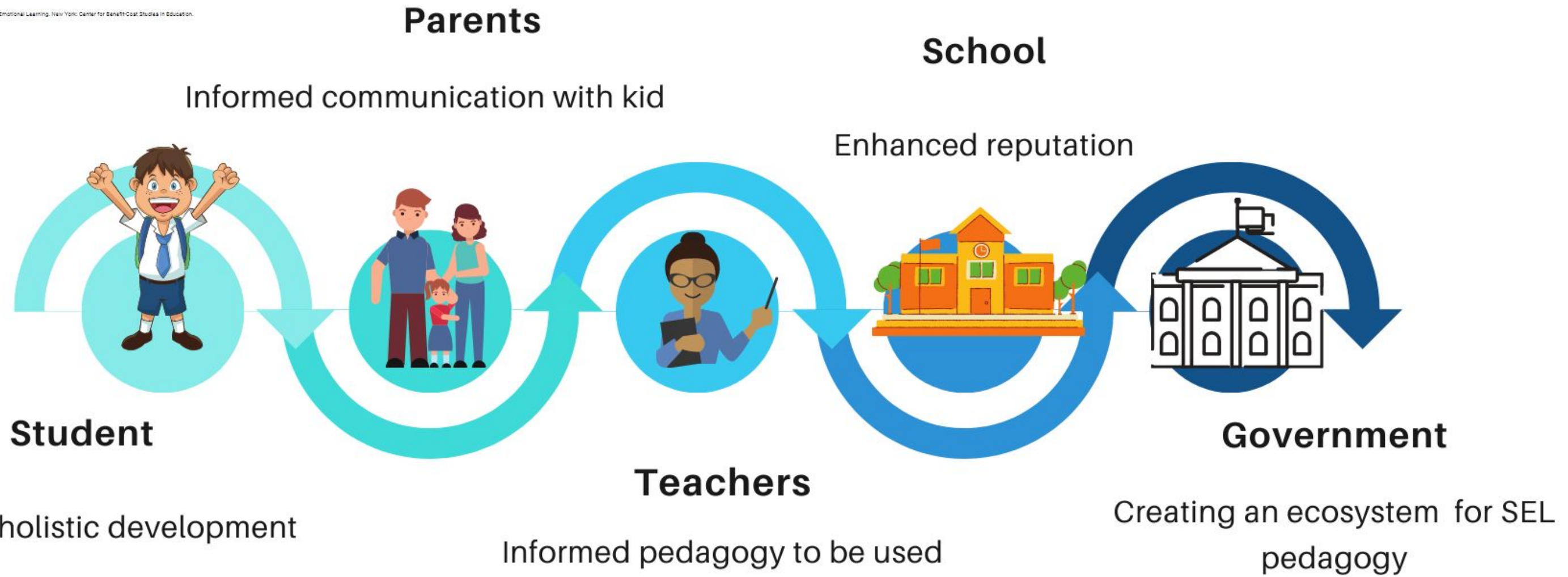
SEL works:
Strong return on investment



The **average return on investment** for six evidence-based programs is:

11 to 1 meaning for every dollar invested there is an \$11 return, savings from costs not incurred for intervention

STAKEHOLDERS BENEFITS



CASEL Source: Balfanz, D., Bowden, B., Klapp, A., Levin, H., Shand, R., & Zander, S. (2018). The Economic Value of Social and Emotional Learning. New York: Center for Benefit-Cost Studies in Education.

Scope of the Project/Product.



Current Stage

- Can give a new marker of assessing schools.

- Can act as facilitator of ‘school complex”

- SEQI can make CITY a unit of evaluation of education.

Future Stage

- Can nudge schools to adopt SEL centric curriculum like Happiness Classrooms



Timeline



7 Timeline

June, 20-Sept20

Ideation-Project design

Exploration of ideas around learning outcomes, understanding SEL, research design

Oct, 20-Nov 20

City- Engagement

Getting SPVs onboard, identification of local/cultural underpinnings, involving civil society as per need,

December, 20

Pilot

Identification of schools, resource planning, conducting survey.

Jan,21-Feb,21

Representation-Visualisation

Data Analysis, Analytics Charts, Possible Interventions.

