

# City Economic Assessment Tool



## Team LED

Aman Singh Rajput, Radha Karmarkar, Vivin R Nair

External Mentor: Mr. Amit Kapoor, Chairman, President  
and CEO, Institute of Competitiveness, India

Internal Mentor: Dr. Debjani Ghosh, Senior Research  
Officer, NIUA

# Cities by 2030...

**590** - million people will live in cities

**270** - million people net increase in working age pop.

**70%** - net new employment will be generated in cities

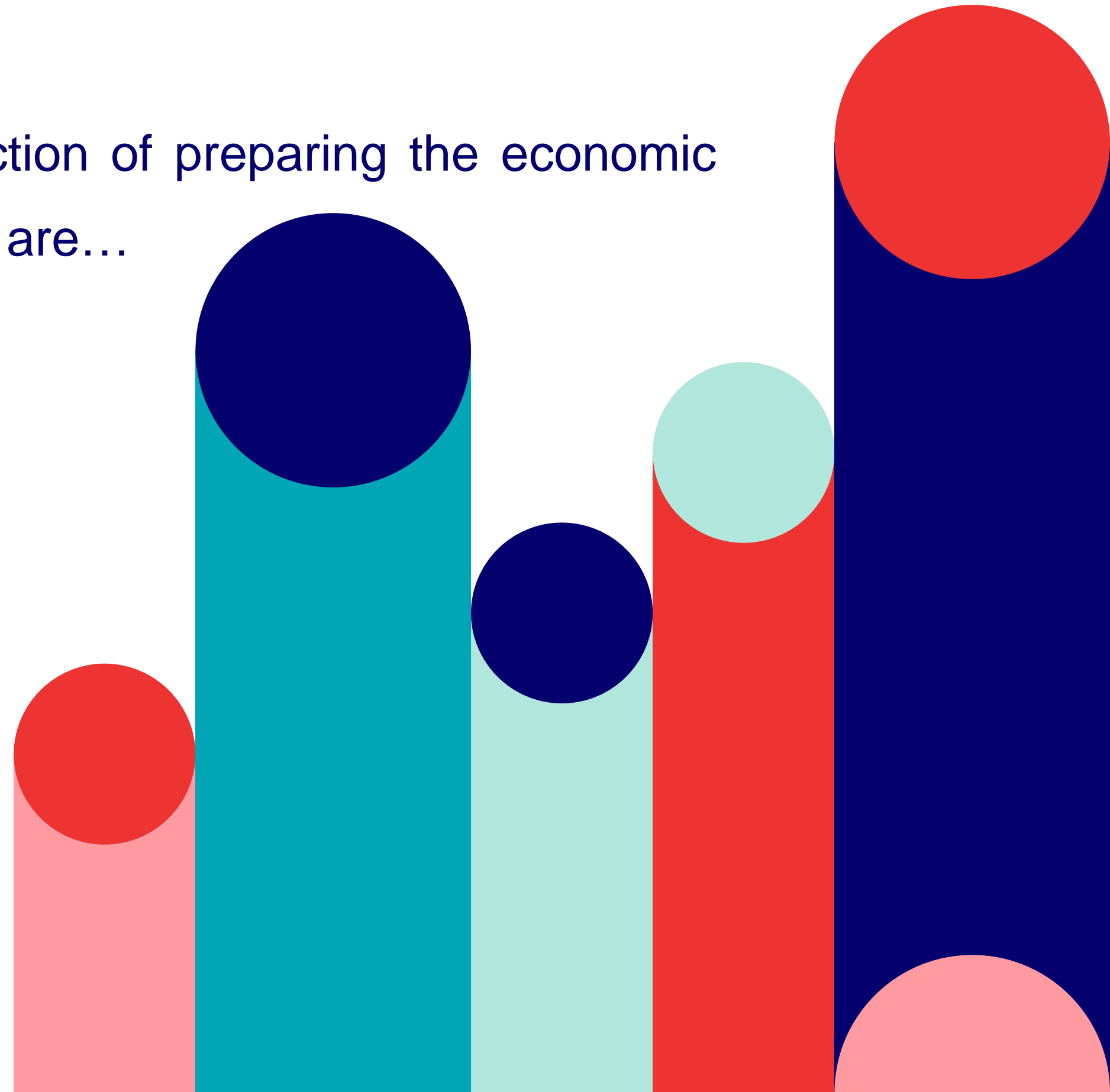
**\$1.2** - trillion capital investment necessary to meet demand

**...Engines of Economic growth!**

# Problem(s)?

Even though the 74th CAA mandates function of preparing the economic development plan to the ULBs but the cities are...

- **I**ll - equipped to enhance their competitive and comparative advantage
- **T**race gaps within their local economic ecosystem
- **H**arness the potentials from economic development



**Idea!** Economic development through data led approach

## Objective

To develop a tool that promotes systematic approach to local economic development backed by **robust data analysis, visualization and suggestive planning** for the city

# Project phasing

## 1 Exploration (July - August 2020)

Process of ideation converting it from paper to celluloid

## 2 Investigation (August - September 2020)

Process of finalization of scope and limitations of the project

## 3 Design (September - January 2020)

Methodology to analyze the market dynamics, comparative advantage and create local framework

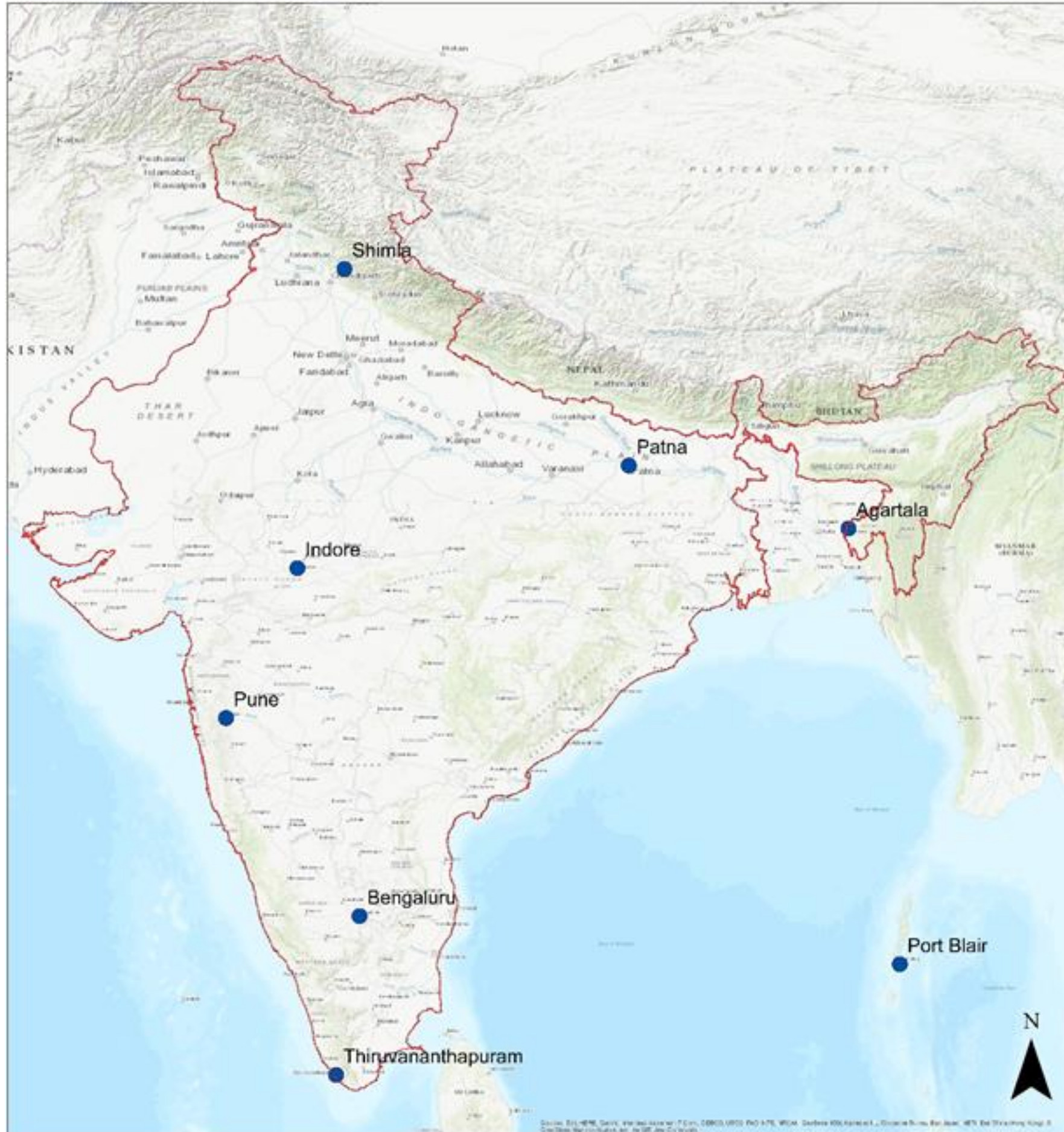
## 4 Pilot (October 2020 - January 2021)

Conduct a pilot in a Smart City, a dashboard for representation of processed data

## 5 Review (February 2021)

Review the project on the basis of parameters defined

# Shortlisted Cities



1. SWOT Analysis
2. Administrative Capitals
3. Commercial Capitals
4. Cities left behind

---

5. Availability of data
6. Language barriers



# Stakeholders Mapping

## **MINISTRY OF ECONOMIC AFFAIRS**

Finance Ministry of the State, Revenue/Accounts/Taxation  
Department of ULB

## **MINISTRY OF TRADE AND COMMERCE**

State Department of Trade and Commerce

## **MINISTRY OF LABOUR AND EMPLOYMENT**

State government labour departments

## **CENSUS INDIA**

District Census Handbook, District Revenue Handbook

## **STATISTICAL REPORTS**

Annual Survey of Industries, NSSO data

## **POLICY AND OTHER**

Finance Commission reports, GIS based maps, Firm Policy,  
MSME incentives



# Economic Ecosystem Variables

## Human Capital

Employment, Skill,  
Education,  
Migration

## Investment

FDI, Inward  
Investment, Credit  
Rating

## Enabling Environment

EOB Index, Infra costs

## Policy Variables

MSME Incentives,  
Firm Policy, PB  
strategies



# Methodology

## CITY ECONOMIC PROFILE

- Smart city profile - Regional context, workforce
- Infrastructure
- Skill ecosystem
- Investment
- Local firm policy



## RAPID ECONOMIC ASSESSMENT



## COMPARATIVE & COMPETITIVE ADVANTAGE

- Location quotient & Shift share analysis
- Cluster analysis - DIAMOND approach
- Policy incentives

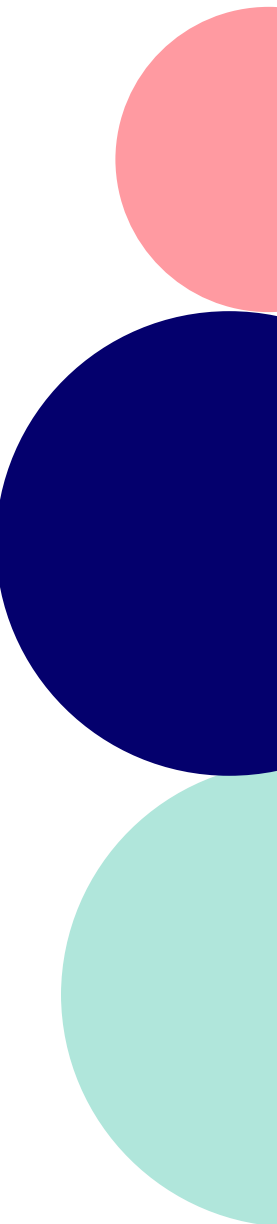


## SUGGESTIVE ROADMAP

## REVENUE POTENTIAL



## HOTSPOT WARD



# Expected Outcomes

1

## Rapid Economic Assessment:

Give information in the form of an economic profile of a city and use the LED framework to understand economic and locational advantages it has

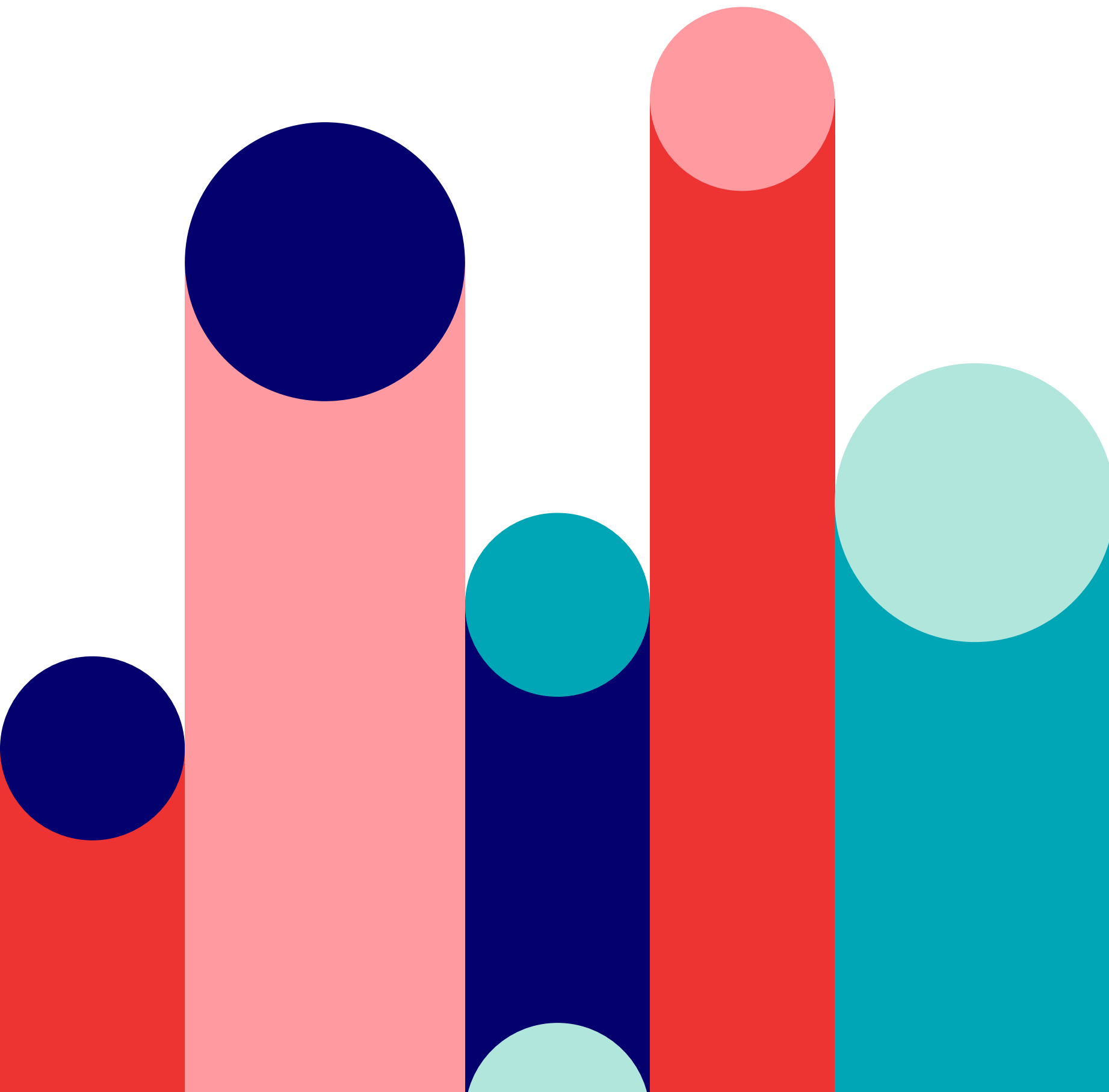
2

Roadmap of the city: Develop a tool that will help city authorities formulate economic plans. The tool will read economic related data from sources and help take informed decisions

3

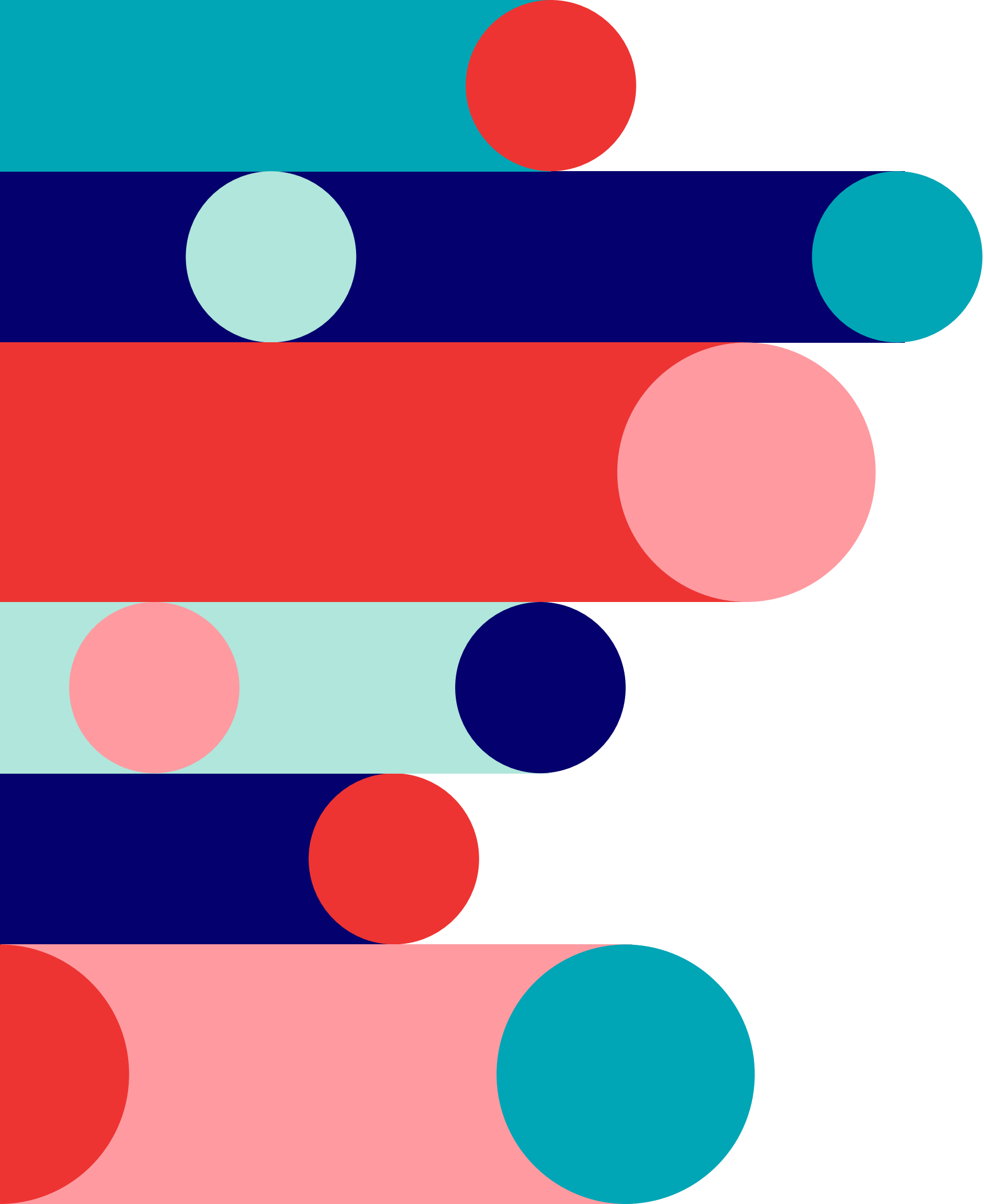
## Revenue Potential:

The tool will use information from GIS based map and analyze the revenue potential from upcoming projects for the ULB



# Challenges

- 1 Challenges related to data: Lack of economic data in cities and willingness of cities to provide data will be a challenge
- 2 Time Constraints: The team can face time constraints as the project is related to data and information coming from cities can delay the pilot
- 3 Constraints Related to Travel: During the pandemic, team might not be able to travel to the city
- 4 Data for Informal Sector: The project is limited to the organised sector as data availability is limited for the informal sector



**Thank you.**