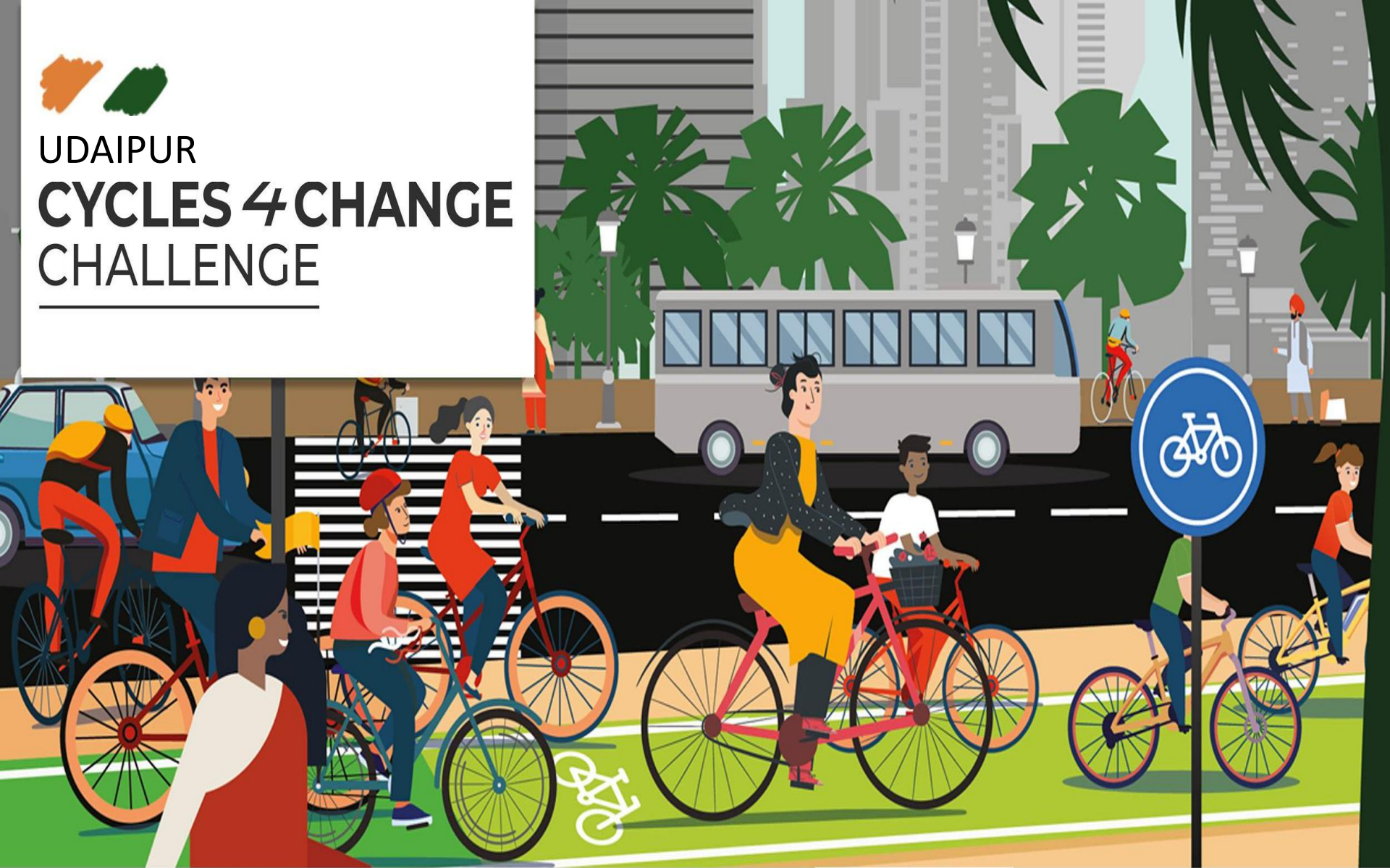


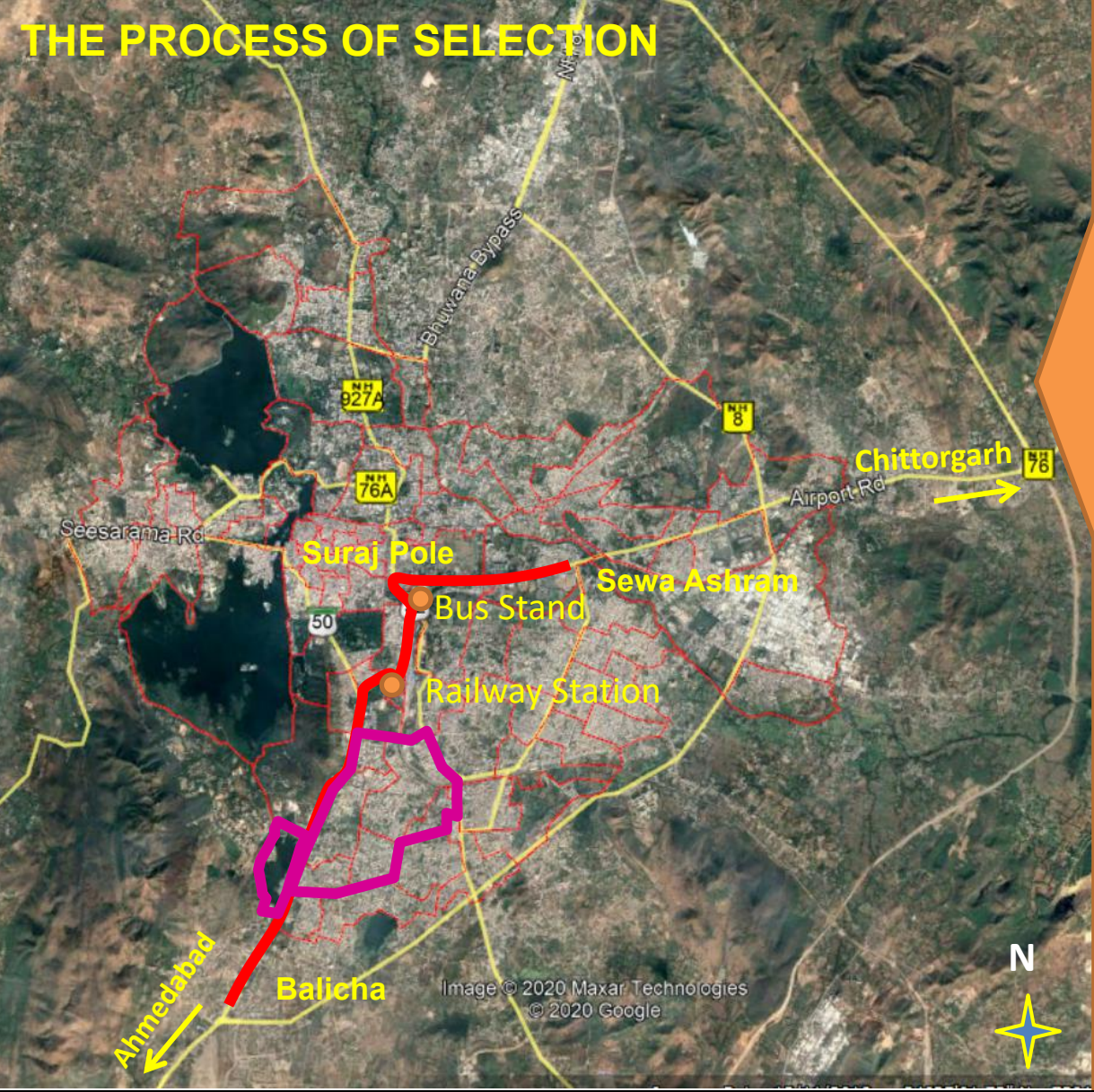


UDAIPUR

CYCLES 4 CHANGE CHALLENGE



THE PROCESS OF SELECTION



Network:

Balicha to Sewa Ashram via Surajpole (9.5 Kms)

- The route should have city-wide connectivity.
- The route which serves maximum no. of commuters and is used by cyclists frequently.
- The route which should also connect major means of transportation.
- It should have potential to cater different categories of users and demography.
- Also feasible to implement the plans.

Neighborhood:

Sec-14 (3.3 Sq. Kms) & Goverdhan Sagar (2.9 Kms)

- Citizen Support
- Recommended as it is connected to selected network.
- It has potential to cater different categories of users and demography.

Neighborhood 1 – called as Sector-14 which is the largest residential sector of Udaipur. It also contains many neighborhood schools, colleges, institutions, clinics, commercial sub center, etc.

Neighborhood 2 – This area majorly contains a water body named as Goverdhan Sagar. It served as major tourist point for both citizens & tourists. People used to daily walk & cycle around the Sagar. .

Handle bar Survey : An Overview

- ❑ Meeting was conducted with
 - Stakeholders
 - Traffic Police Department
 - Citizen Representatives
 - City Officials

- ❑ Suggestion were also asked through feedback forms & Social media. Approached to various School & Colleges via mail and letters.

- ❑ Base Map Preparation:
 - School & Colleges
 - Various Govt. & Non- Govt. Institutions
 - Various facilities & Amenities
 - Local Market, etc.

- ❑ Survey Routes were planned in advance.

- ❑ We mapped various barriers & pain points.

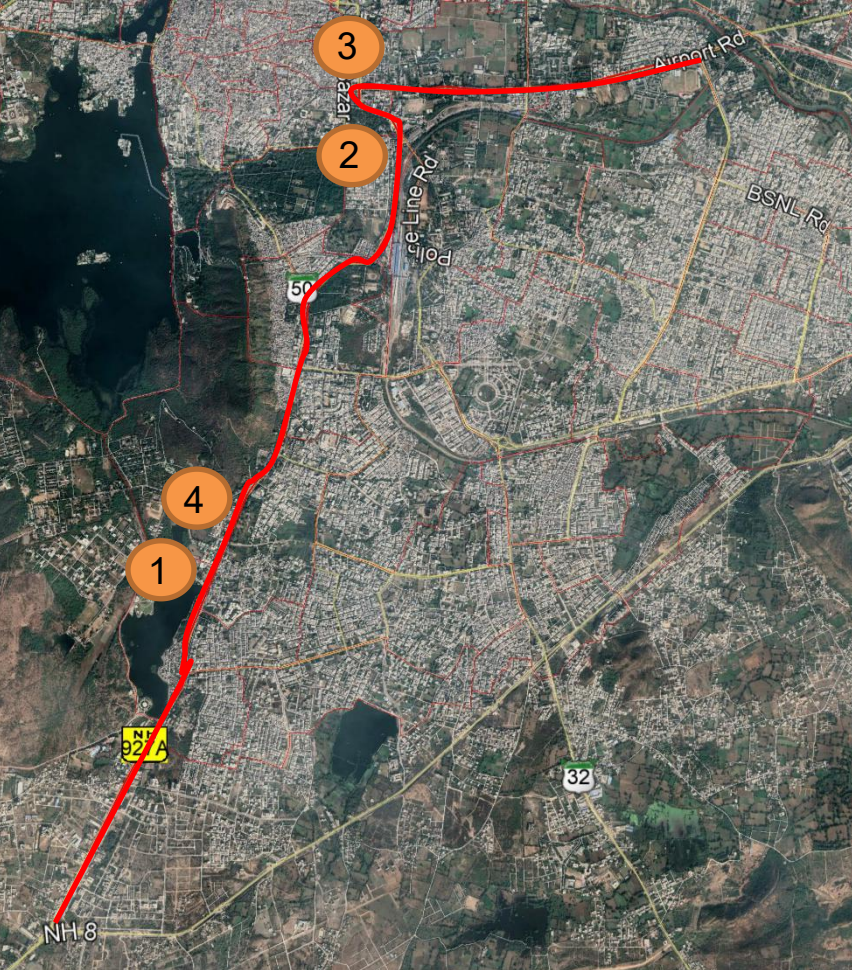


Pain points- Corridors



- A- Fast Moving Traffic
- B- Commercial Lane (which includes all issues like obstruction by parking, hawkers, dangerous intersections, etc)
- C- Dangerous Junctions
- D- Blind Turns
- E -Obstruction by Parking
- F- Bad Road Surface
- G- Obstruction by hawkers & vendors
- H- Terrain
- I- Poles & Trees as obstruction

Issues : Fast moving vehicles & dangerous intersection



1. The road width which is around 10-11m wide and therefore vehicles moves at very high speed.

2. This is another point where road is wide & therefore it results into fast moving vehicles. As it is a commercial lane, it also leads to congestion.



3. Intersection with heavy vehicles



4. Signaled Cross junction.



Issues : Commercial Crowded Lane



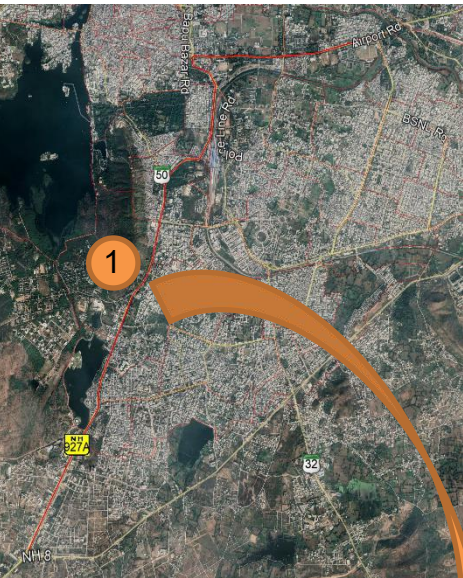
1. Commercial Lane includes all issues like obstruction by parking, hawkers, difficulty in crossing intersections, etc.

2. At few kilometer the lane leads to congestion.



3. As it is a commercial lane, no space is left after main carriage way to ride cycles.



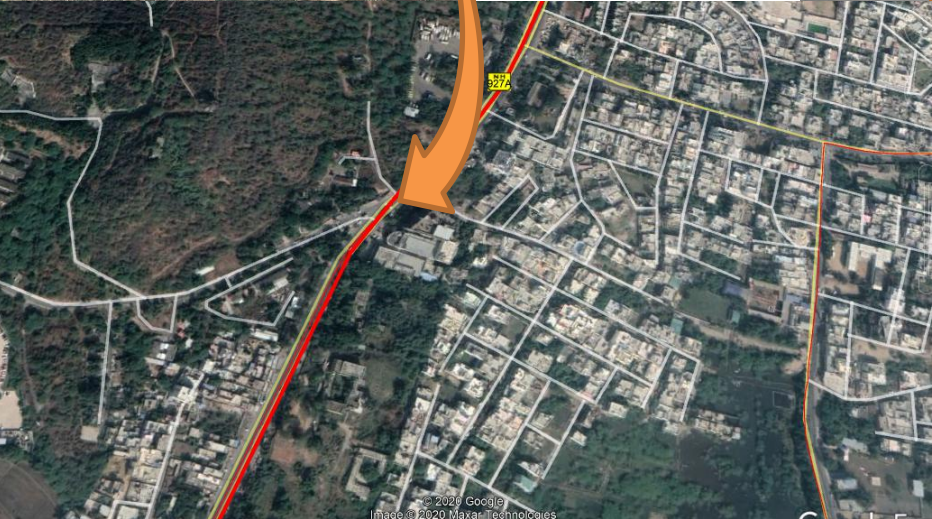


Issues :
Blind Turn

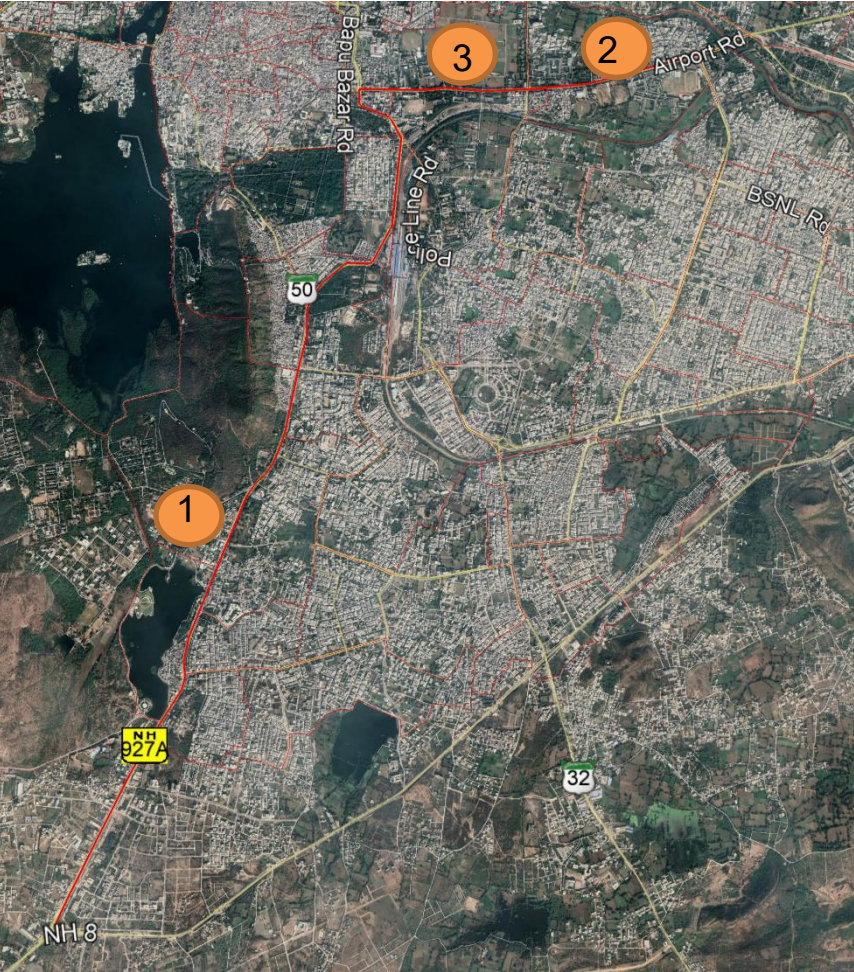


Blind turn may risk to cyclist safety.

Bad Surface of road



Issue : Obstruction by Hawkers & Vendors



1. Hawkers are obstructing the way.

2. Vendors and vehicles approaching them are creating obstruction.



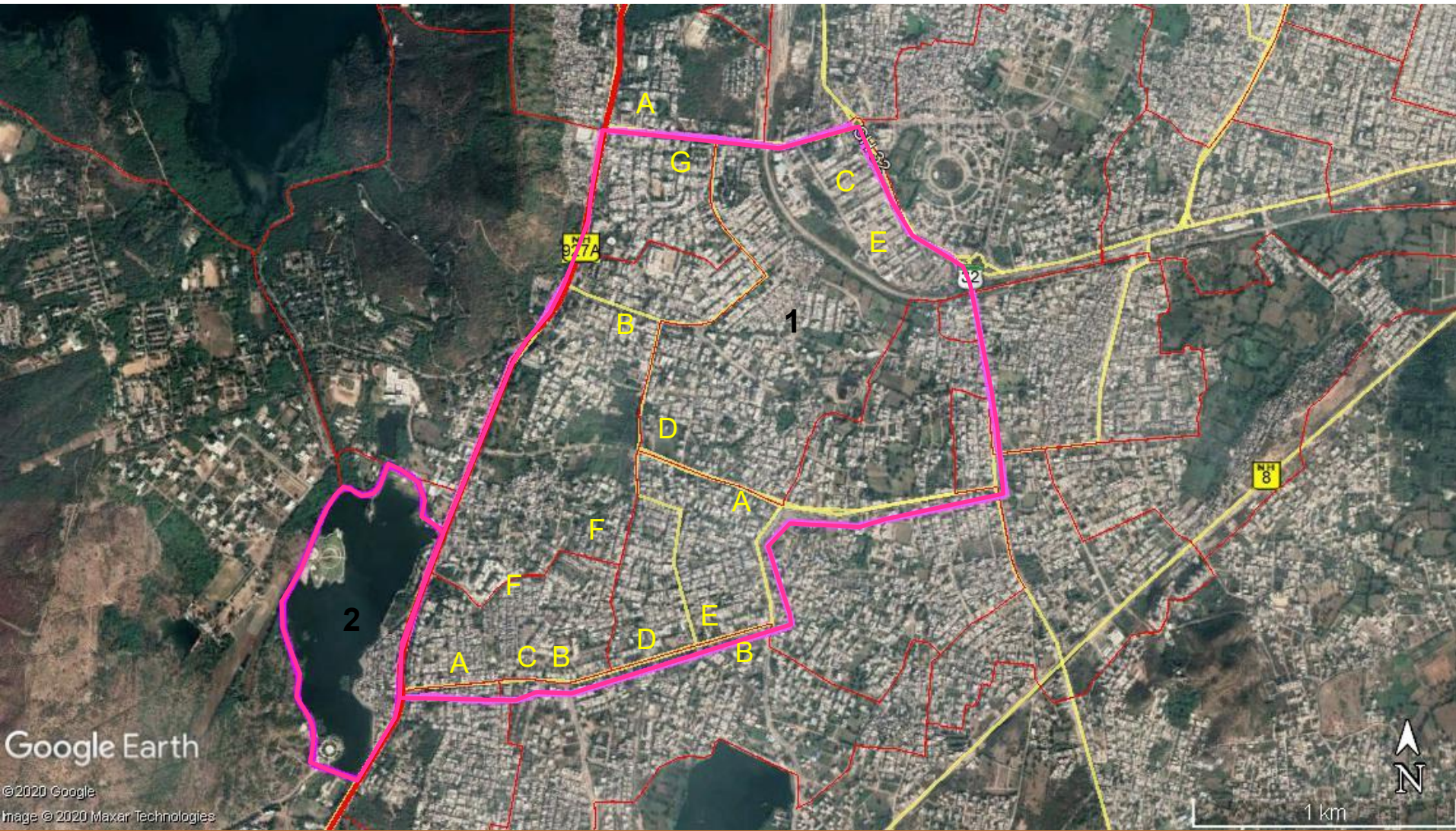
3. Vendors and vehicles obstructing the main Carriage way.

Issues : Terrain; Poles & Trees as obstruction



- At various points Terrain does not support cycling.
- Also, at many points trees and electric poles are creating obstruction.

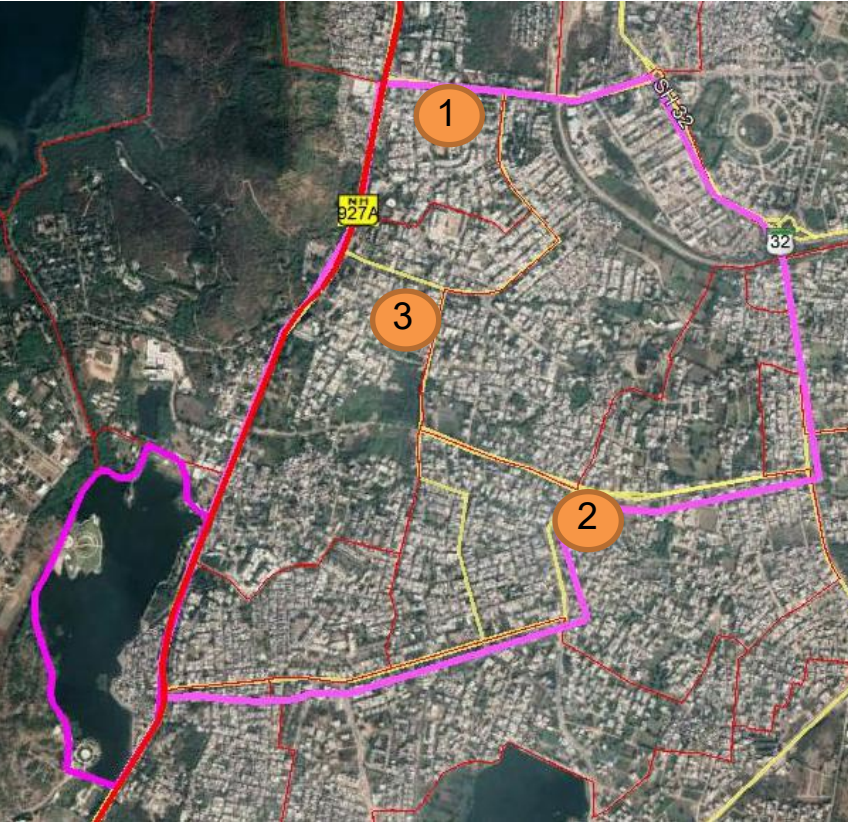
Pain Points: Neighborhoods



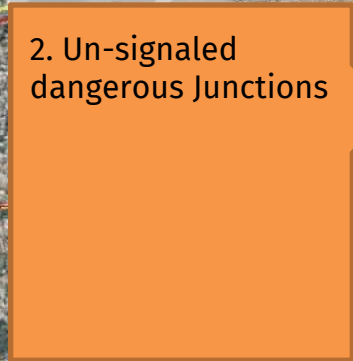
A- Fast Moving Traffic
B- Dangerous Junctions
C- Obstruction by Parking
D -Bad Road Surface

E- Obstruction by hawkers & vendors
F- Terrain
G- Poles & Trees as obstruction

Issues



1. Fast moving Vehicles.



2. Un-signalized dangerous Junctions



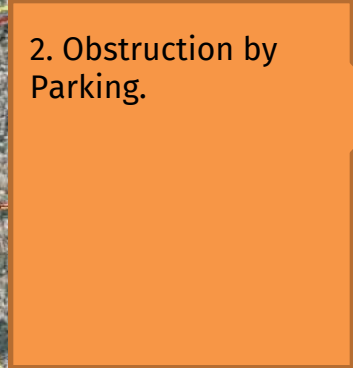
3. Difficulty in Crossing Roads



Issues



1. Obstruction by Commercial activities



2. Obstruction by Parking.



3. Obstruction due to Hawkers.



Issues



1. Terrain results difficulty to cyclers for riding a cycle.



2. At many points Poles and Trees as creating obstruction.

Dealbreakers among all the pain points



Dangerous Cross junction



Heavy movement vehicle



Commercial Activities/ Encroachments on Roads



Un-signalled Intersection in neighborhood



Thank You